

TURNKEY TOWNHOME COMMUNITY | FOR SALE

4696 Beck Lake Trl  
Melbourne, FL 32901

# Hidden Woods

A new Luxury Townhome Development In the Heart of Melbourne



**MVP  
SALES  
GROUP**

Investments & Development

of



**WATERMAN**  
REAL ESTATE

**Meili Viera Porter**

Broker, MBA, MS Real Estate  
Development & Investments  
(321) 848-7344  
MeiliViera@icloud.com





Offered For \$4,467,000

- A Price Family Homes Development
- Now Ready for Occupancy
- 1.3 Acres
- 6 End Units- 4 bedrooms, 2 1/2 baths, 1 car garage (Master suite downstairs).
- 6 Interior Units- 3 bedrooms, 2 1/2 baths, 1 car garage.
- Top Quality Finishes - Impact Windows, Granite Counters, LVT Flooring, Stone & Decorative Siding and more.
- City Water & Sewer!
- No Rental Restrictions! Ideal for a Rental Community.

*Hidden Woods*

A new Luxury Townhome Development In the Heart of Melbourne



**WATERMAN**  
REAL ESTATE

This information has been secured from sources we believe to be reliable, but we make no representations or warranties, expressed or implied, as to the accuracy of the information. References to square footage or age are approximate. Buyer must verify the information and bears all risk for any inaccuracies. Any projections, opinions, assumptions or estimates used herein are for example purposes only and do not represent the current or future performance of the property. Buyer is responsible for conducting his/her own investigation of all matters affecting the value of the property. By accepting this Marketing Brochure you agree to release Waterman Real Estate and hold it harmless from any kind of claim, cost, expense, or liability arising out of your investigation and/or purchase of this property.



## FRONT ELEVATION



Thriplex Elevation



Quadplex Elevation



**WATERMAN**  
REAL ESTATE

This information has been secured from sources we believe to be reliable, but we make no representations or warranties, expressed or implied, as to the accuracy of the information. References to square footage or age are approximate. Buyer must verify the information and bears all risk for any inaccuracies. Any projections, opinions, assumptions or estimates used herein are for example purposes only and do not represent the current or future performance of the property. Buyer is responsible for conducting his/her own investigation of all matters affecting the value of the property. By accepting this Marketing Brochure you agree to release Waterman Real Estate and hold it harmless from any kind of claim, cost, expense, or liability arising out of your investigation and/or purchase of this property.



# END UNIT FLOOR PLAN

## FEATURES

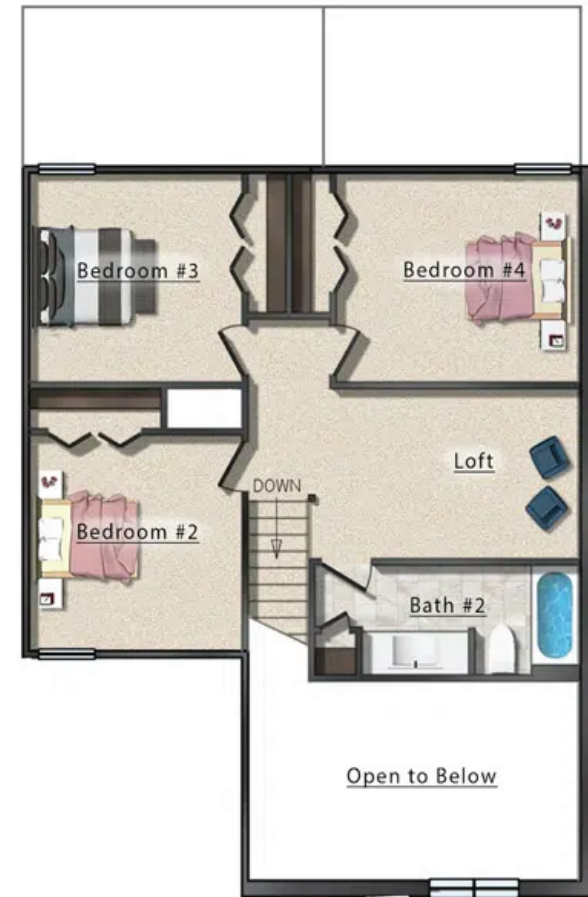
- 4 Bedroom
- 2.5 Bath
- Loft
- 1,820 Living Sq. Ft.
- 2,262 Total Sq. Ft.
- 1 Car Garage
- Covered Patio
- Covered Porch
- Stone Accents



Copyright © 2024 Price Family Homes



1st Level Floor Plan



2nd Level Floor Plan



**WATERMAN**  
REAL ESTATE

This information has been secured from sources we believe to be reliable, but we make no representations or warranties, expressed or implied, as to the accuracy of the information. References to square footage or age are approximate. Buyer must verify the information and bears all risk for any inaccuracies. Any projections, opinions, assumptions or estimates used herein are for example purposes only and do not represent the current or future performance of the property. Buyer is responsible for conducting his/her own investigation of all matters affecting the value of the property. By accepting this Marketing Brochure you agree to release Waterman Real Estate and hold it harmless from any kind of claim, cost, expense, or liability arising out of your investigation and/or purchase of this property.



# INTERIOR UNIT FLOOR PLAN

## FEATURES

- 3 Bedrooms
- 2.5 Baths
- Tile in Master Shower
- 1,648 Living Sq. Ft.
- 2,160 Total Sq. Ft.
- 1 Car Garage
- Covered Patio
- Covered Porch
- Stone Accents



"The right home at the right price."

Copyright © 2024 Price Family Homes



1st Level Floor Plan



2nd Level Floor Plan



**WATERMAN**  
REAL ESTATE

This information has been secured from sources we believe to be reliable, but we make no representations or warranties, expressed or implied, as to the accuracy of the information. References to square footage or age are approximate. Buyer must verify the information and bears all risk for any inaccuracies. Any projections, opinions, assumptions or estimates used herein are for example purposes only and do not represent the current or future performance of the property. Buyer is responsible for conducting his/her own investigation of all matters affecting the value of the property. By accepting this Marketing Brochure you agree to release Waterman Real Estate and hold it harmless from any kind of claim, cost, expense, or liability arising out of your investigation and/or purchase of this property.





# Hidden Woods

A new Luxury Townhome Development In the Heart of Melbourne

## EXCLUSIVELY OFFERED BY



**MVP  
SALES  
GROUP**

*Investments & Development*

of



**WATERMAN**  
REAL ESTATE

**Meili Viera Porter**

Broker, MBA, MS Real Estate  
Development & Investments  
(321) 848-7344  
[MeiliViera@icloud.com](mailto:MeiliViera@icloud.com)

