

FOR SALE
3.63 Acres of Land

Edelweiss Street NE
Canton, OH 44721

SALE PRICE	\$250,000.00
LAND AREA	3.63
PARCEL	5218419, 5218420, 5218421
ZONING	R3
FRONTAGE/DEPTH	102' / 314'
COUNTY	Stark
TOWNSHIP	Plain

- 3.63 acres of residential land.
- Can be combined with 0.74 Acre of land at 2625 Easton St NE.
- Zoning will allow for up to 31 multi family units.

Jared Sanford

330 354 3466
jared@naispring.com

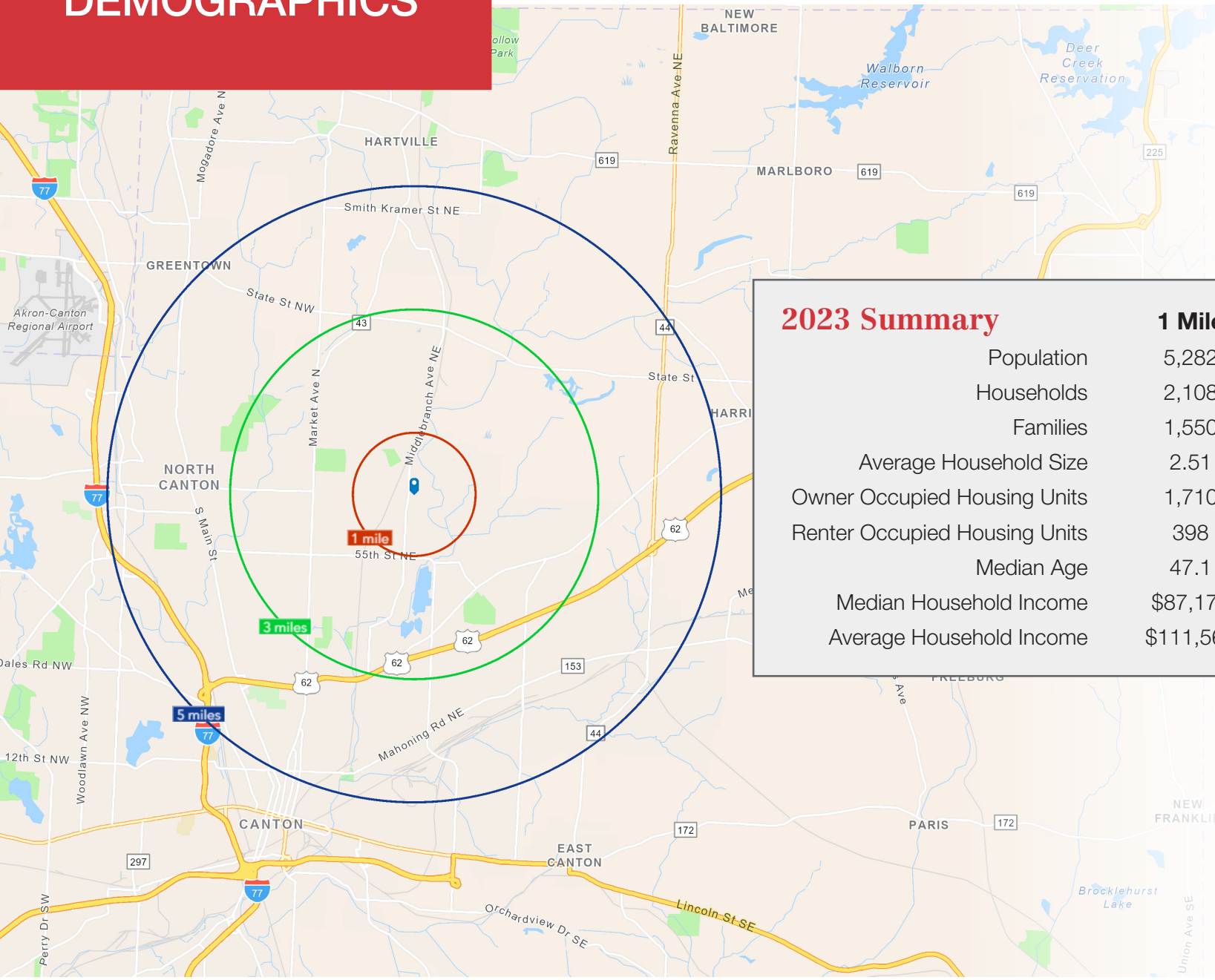
Sean Sanford

330 284 0331
sean@naispring.com

NO WARRANTY OR REPRESENTATION, EXPRESS OR IMPLIED, IS MADE AS TO THE ACCURACY OF THE INFORMATION CONTAINED HEREIN, AND THE SAME IS SUBMITTED SUBJECT TO ERRORS, OMISSIONS, CHANGE OF PRICE, RENTAL OR OTHER CONDITIONS. PRIOR SALE, LEASE OR FINANCING, OR WITHDRAWAL WITHOUT NOTICE, AND OF ANY SPECIAL LISTING CONDITIONS IMPOSED BY OUR PRINCIPALS NO WARRANTIES OR REPRESENTATIONS ARE MADE AS TO THE CONDITION OF THE PROPERTY OR ANY HAZARDS CONTAINED THEREIN ARE ANY TO BE IMPLIED.

8234 Pittsburg Ave NW
North Canton, OH 44720
+1 330 966 8800
naispring.com

DEMOGRAPHICS



2023 Summary

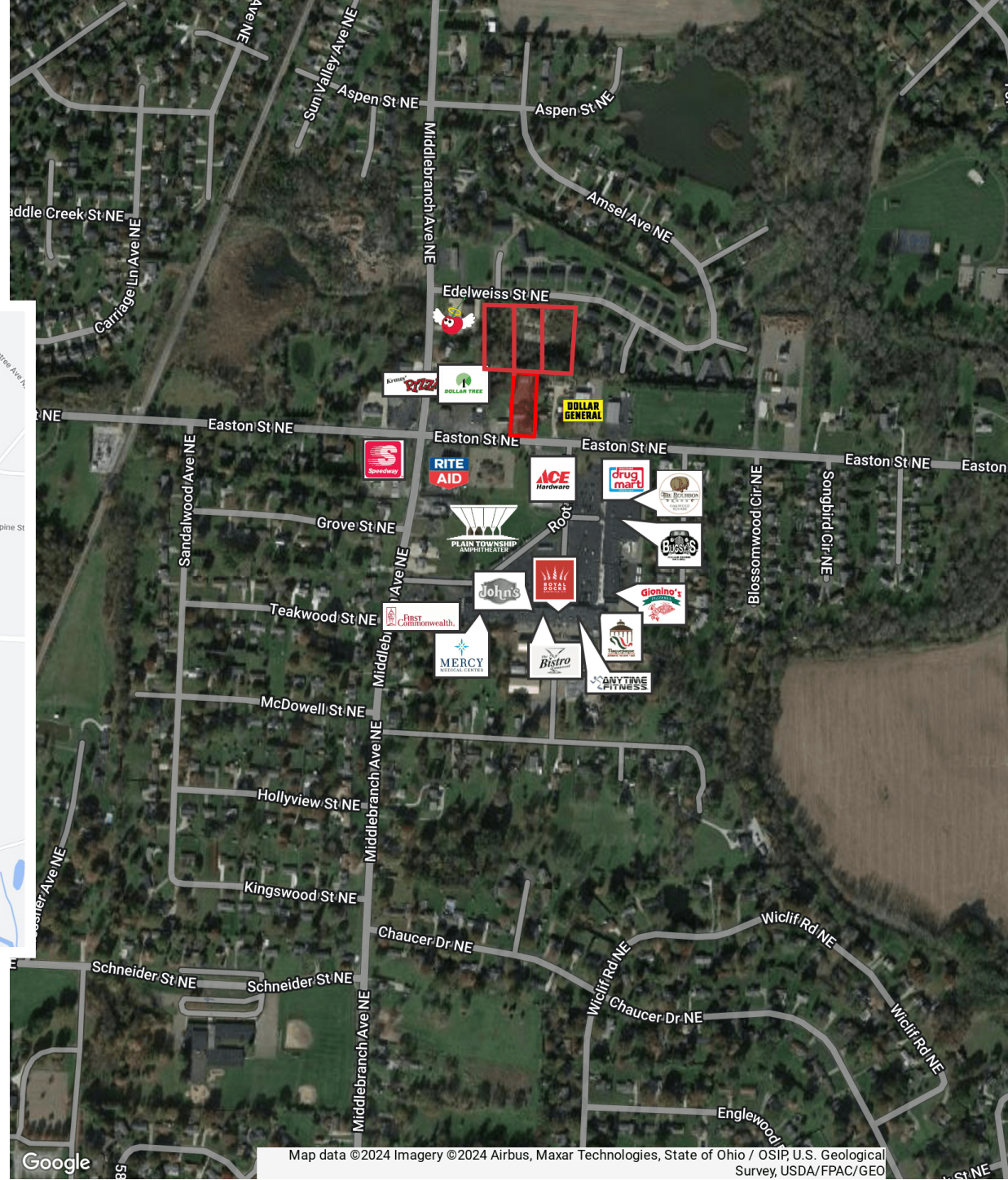
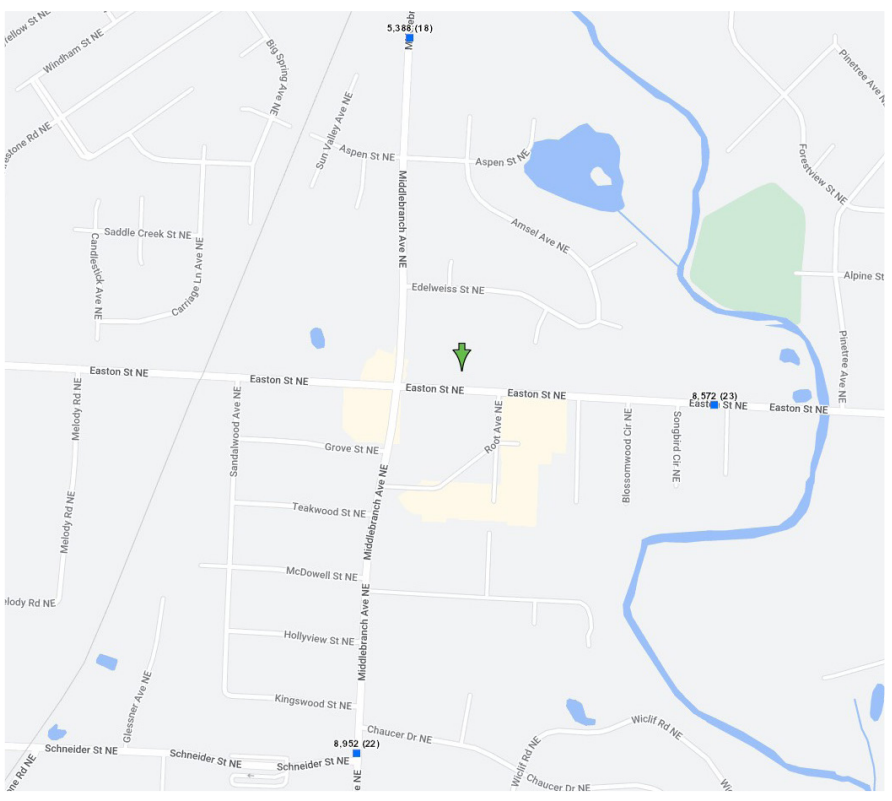
	1 Mile	3 Miles	5 Miles
Population	5,282	34,713	108,496
Households	2,108	13,719	45,902
Families	1,550	9,560	28,231
Average Household Size	2.51	2.42	2.30
Owner Occupied Housing Units	1,710	10,938	30,176
Renter Occupied Housing Units	398	2,781	15,726
Median Age	47.1	46.7	42.9
Median Household Income	\$87,175	\$77,793	\$60,683
Average Household Income	\$111,565	\$101,172	\$86,997

NO WARRANTY OR REPRESENTATION, EXPRESS OR IMPLIED, IS MADE AS TO THE ACCURACY OF THE INFORMATION CONTAINED HEREIN, AND THE SAME IS SUBMITTED SUBJECT TO ERRORS, OMISSIONS, CHANGE OF PRICE, RENTAL OR OTHER CONDITIONS, PRIOR SALE, LEASE OR FINANCING, OR WITHDRAWAL WITHOUT NOTICE, AND OF ANY SPECIAL LISTING CONDITIONS IMPOSED BY OUR PRINCIPALS NO WARRANTIES OR REPRESENTATIONS ARE MADE AS TO THE CONDITION OF THE PROPERTY OR ANY HAZARDS CONTAINED THEREIN ARE ANY TO BE IMPLIED.

8234 Pittsburg Ave NW
North Canton, OH 44720
+1 330 966 8800

naispring.com

RETAIL MAP/TRAFFIC



NO WARRANTY OR REPRESENTATION, EXPRESS OR IMPLIED, IS MADE AS TO THE ACCURACY OF THE INFORMATION CONTAINED HEREIN, AND THE SAME IS SUBMITTED SUBJECT TO ERRORS, OMISSIONS, CHANGE OF PRICE, RENTAL OR OTHER CONDITIONS, PRIOR SALE, LEASE OR FINANCING, OR WITHDRAWAL WITHOUT NOTICE, AND OF ANY SPECIAL LISTING CONDITIONS IMPOSED BY OUR PRINCIPALS NO WARRANTIES OR REPRESENTATIONS ARE MADE AS TO THE CONDITION OF THE PROPERTY OR ANY HAZARDS CONTAINED THEREIN ARE ANY TO BE IMPLIED.

8234 Pittsburg Ave NW
 North Canton, OH 44720
 +1 330 966 8800
naispring.com