

PMZ
SINCE 1957

COMMERCIAL
REAL ESTATE

For lease

1700 Standiford Ave Modesto CA 95350



To discuss your property or any commercial real estate needs please contact:

PMZCommercial.com

JORDAN AMARANT

DRE# 01911219

209.345.8209 | jamarant@pmz.com

1700 Standiford Ave

APN: 054-58-04

Total Size: 49,470 sf

Available Units

Suite 250: 2,326 SF



Can be
combined
to total
4,473 sf

Suite 210: 2,147 SF

Suite 350: 1,200 SF

Property Description

Class A Office Building conveniently located along high traffic Standiford Ave. Three office units in excellent condition available. Suites 210 and 250 can be combined for a total of 4,473sf.

Convenient Location near Walgreens, Central Valley Community Bank, 123 iSmile Dental Office and Save Mart Corporate offices. Corner of Carver and Standiford, a main thoroughfare in Modesto connecting West and East Modesto.

To discuss your property or any commercial real estate needs please contact:

PMZCommercial.com

JORDAN AMARANT

DRE# 01911219

209.345.8209 | jamarant@pmz.com



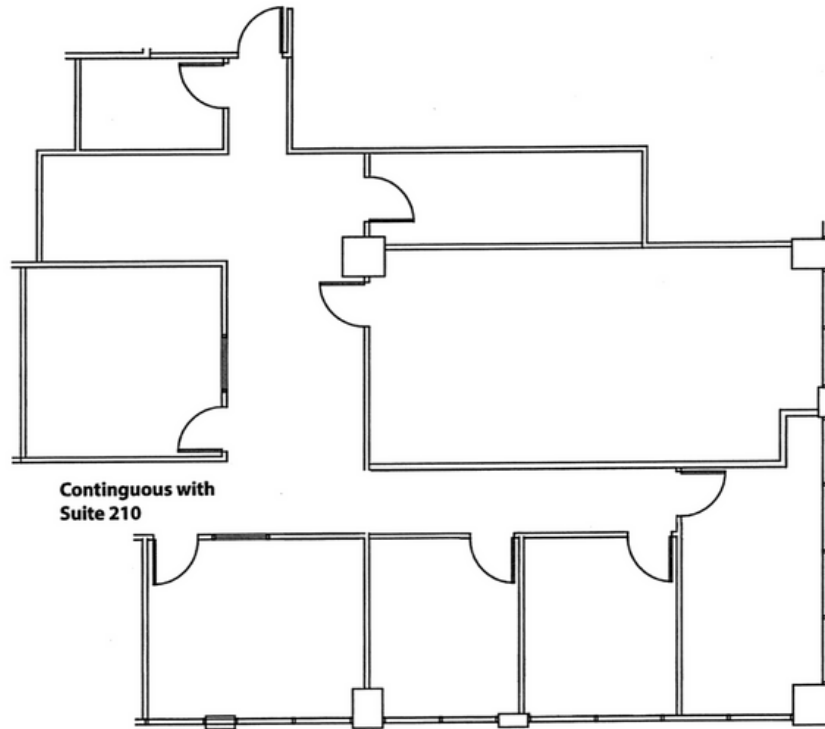
To discuss your property or any commercial real estate needs please contact:

PMZCommercial.com

JORDAN AMARANT

DRE# 01911219

209.345.8209 | jamarant@pmz.com



1700 Standiford Avenue, Suite 250
Modesto, California 95350

Approximately 2,326 SF

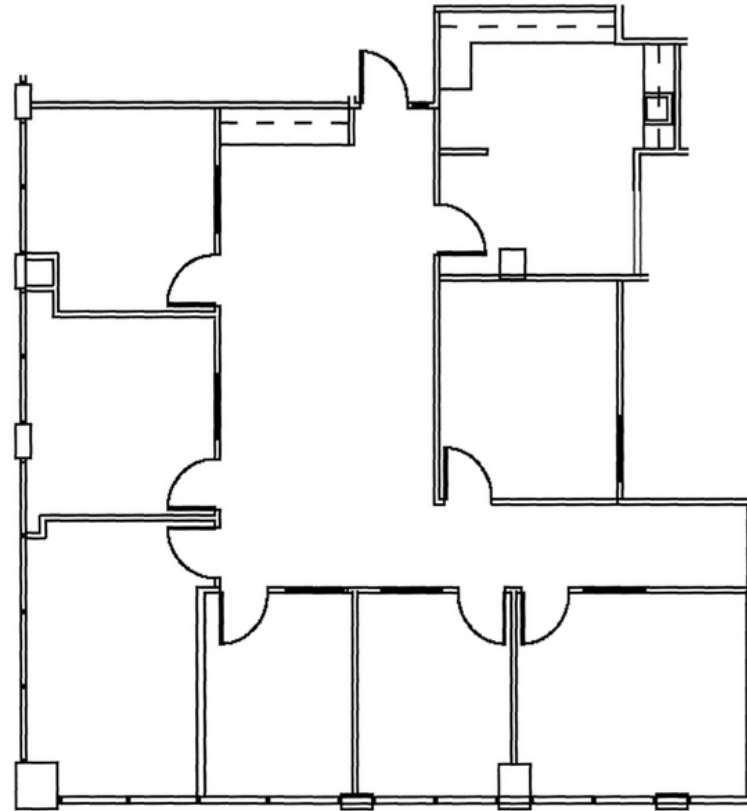
To discuss your property or any commercial real estate needs please contact:

PMZCommercial.com

JORDAN AMARANT

DRE# 01911219

209.345.8209 | jamarant@pmz.com



Suite 210
Approximately 2,147 SF

To discuss your property or any commercial real estate needs please contact:

PMZCommercial.com

JORDAN AMARANT

DRE# 01911219

209.345.8209 | jamarant@pmz.com