

FOR SALE



224 N Smith St

Santa Maria, CA 93458



Araceli Jugo

562.964.1667

araceli.jugo@expcommercial.com
www.expcommercial.com

Table of Contents

FOR SALE

TABLE OF CONTENTS

PROPERTY INFORMATION	3
PROPERTY SUMMARY	4
PROPERTY DESCRIPTION	5
COMPLETE HIGHLIGHTS	6
ADDITIONAL PHOTOS	7
LOCATION INFORMATION	8
REGIONAL MAP	9
LOCATION MAP	10
AERIAL MAP	11
SITE PLANS	12
FINANCIAL ANALYSIS	13
FINANCIAL SUMMARY	14
DEMOGRAPHICS	15
DEMOGRAPHICS MAP & REPORT	16

CONFIDENTIALITY & DISCLAIMER

All materials and information received or derived from eXp Commercial its directors, officers, agents, advisors, affiliates and/or any third party sources are provided without representation or warranty as to completeness, veracity, or accuracy, condition of the property, compliance or lack of compliance with applicable governmental requirements, developability or suitability, financial performance of the property, projected financial performance of the property for any party's intended use or any and all other matters.

Neither eXp Commercial its directors, officers, agents, advisors, or affiliates makes any representation or warranty, express or implied, as to accuracy or completeness of the any materials or information provided, derived, or received. Materials and information from any source, whether written or verbal, that may be furnished for review are not a substitute for a party's active conduct of its own due diligence to determine these and other matters of significance to such party. eXp Commercial will not investigate or verify any such matters or conduct due diligence for a party unless otherwise agreed in writing.

EACH PARTY SHALL CONDUCT ITS OWN INDEPENDENT INVESTIGATION AND DUE DILIGENCE.

Any party contemplating or under contract or in escrow for a transaction is urged to verify all information and to conduct their own inspections and investigations including through appropriate third party independent professionals selected by such party. All financial data should be verified by the party including by obtaining and reading applicable documents and reports and consulting appropriate independent professionals. eXp Commercial makes no warranties and/or representations regarding the veracity, completeness, or relevance of any financial data or assumptions. eXp Commercial does not serve as a financial advisor to any party regarding any proposed transaction. All data and assumptions regarding financial performance, including that used for financial modeling purposes, may differ from actual data or performance. Any estimates of market rents and/or projected rents that may be provided to a party do not necessarily mean that rents can be established at or increased to that level. Parties must evaluate any applicable contractual and governmental limitations as well as market conditions, vacancy factors and other issues in order to determine rents from or for the property.

Legal questions should be discussed by the party with an attorney. Tax questions should be discussed by the party with a certified public accountant or tax attorney. Title questions should be discussed by the party with a title officer or attorney. Questions regarding the condition of the property and whether the property complies with applicable governmental requirements should be discussed by the party with appropriate engineers, architects, contractors, other consultants and governmental agencies. All properties and services are marketed by eXp Commercial in compliance with all applicable fair housing and equal opportunity laws.

Araceli Jugo

562.964.1667

araceli.jugo@expcommercial.com



eXp Commercial, LLC, its direct and indirect parents and their subsidiaries (together, "We") obtained the information above from sources believed to be reliable, however, We have not verified its accuracy and make no guarantee, warranty or representation, expressed or implied, about such information. The information contained above is submitted subject to the possibility of errors, omissions, price changes, rental or other conditions, prior sale, lease or financing, or withdrawal without notice. Any projections, opinions, assumptions or estimates of the information contained above or provided in connection therewith, either expressed or implied, are for example only, and they may not represent current or future performance of the subject property. You, together with your tax and legal advisors, should conduct your own thorough investigation of the subject property and potential investment.



Section 1

Property Information

Property Summary

FOR SALE



PROPERTY DESCRIPTION

Presenting a prime industrial investment opportunity in Santa Maria, CA. This 11,000 SF building, constructed in 1950, boasts full occupancy with a single unit, making it an ideal choice for industrial and manufacturing investors seeking a reliable income stream. Zoned R-3, this property offers versatility and potential for expansion or redevelopment. With a strategic location and 100% occupancy, this property represents a secure and promising addition to any investment portfolio.

PROPERTY HIGHLIGHTS

- Santa Maria location
- 100% occupancy
- Three garage doors
- Open floor plan
- Updated office and storage space

OFFERING SUMMARY

Sale Price:	\$1,499,000
Number of Units:	1
Lot Size:	14,422 SF
Building Size:	11,000 SF
NOI:	\$92,400.00
Cap Rate:	6.16%

DEMOGRAPHICS	0.3 MILES	0.5 MILES	1 MILE
Total Households	745	1,978	7,921
Total Population	3,480	9,207	34,396
Average HH Income	\$79,578	\$77,139	\$79,776

Araceli Jugo

562.964.1667

araceli.jugo@expcommercial.com



eXp Commercial, LLC, its direct and indirect parents and their subsidiaries (together, "We") obtained the information above from sources believed to be reliable, however, We have not verified its accuracy and make no guarantee, warranty or representation, expressed or implied, about such information. The information contained above is submitted subject to the possibility of errors, omissions, price changes, rental or other conditions, prior sale, lease or financing, or withdrawal without notice. Any projections, opinions, assumptions or estimates of the information contained above or provided in connection therewith, either expressed or implied, are for example only, and they may not represent current or future performance of the subject property. You, together with your tax and legal advisors, should conduct your own thorough investigation of the subject property and potential investment.

Property Description

FOR SALE



PROPERTY DESCRIPTION

Presenting a prime industrial investment opportunity in Santa Maria, CA. This 11,000 SF building, constructed in 1950, boasts full occupancy with a single unit, making it an ideal choice for industrial and manufacturing investors seeking a reliable income stream. Zoned R-3, this property offers versatility and potential for expansion or redevelopment. With a strategic location and 100% occupancy, this property represents a secure and promising addition to any investment portfolio.

LOCATION DESCRIPTION

This warehouse is strategically located in Santa Maria's core industrial district, just minutes from Highway 101 and major thoroughfares that connect the Central Coast. The property offers convenient access to regional markets including Santa Barbara, San Luis Obispo, and Ventura Counties, while also being within driving distance of Los Angeles.

Santa Maria is the largest city in northern Santa Barbara County and serves as a hub for agriculture, wine production, food processing, manufacturing, and distribution. The area's industrial market is marked by low vacancy rates (~4–5%) and strong tenant demand, making it one of the most stable submarkets along the Central Coast.

The site benefits from its proximity to logistics routes, labor pools, and local amenities, making it an attractive option for owner-users or investors seeking a foothold in a competitive market with growth potential.

Araceli Jugo

562.964.1667

araceli.jugo@expcommercial.com



eXp Commercial, LLC, its direct and indirect parents and their subsidiaries (together, "We") obtained the information above from sources believed to be reliable, however, We have not verified its accuracy and make no guarantee, warranty or representation, expressed or implied, about such information. The information contained above is submitted subject to the possibility of errors, omissions, price changes, rental or other conditions, prior sale, lease or financing, or withdrawal without notice. Any projections, opinions, assumptions or estimates of the information contained above or provided in connection therewith, either expressed or implied, are for example only, and they may not represent current or future performance of the subject property. You, together with your tax and legal advisors, should conduct your own thorough investigation of the subject property and potential investment.

Complete Highlights

FOR SALE



PROPERTY HIGHLIGHTS

- Santa Maria location
- 100% occupancy
- Three garage doors
- Open floor plan
- Updated office and storage space



Araceli Jugo

562.964.1667

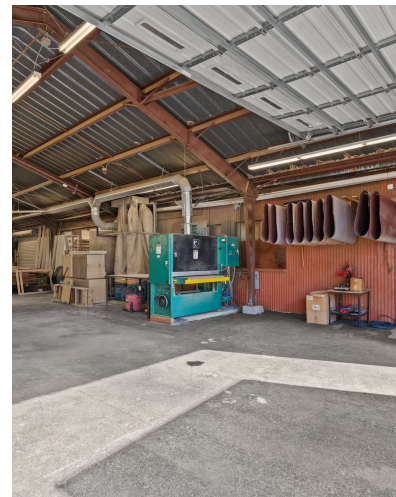
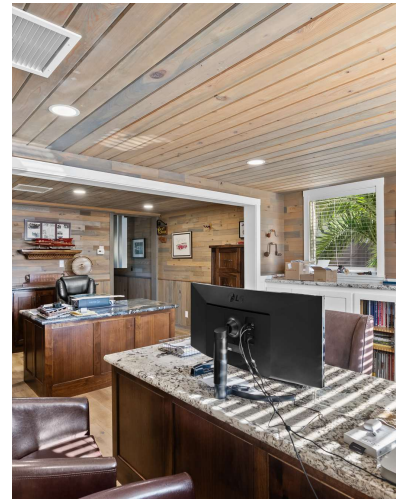
araceli.jugo@expcommercial.com



eXp Commercial, LLC, its direct and indirect parents and their subsidiaries (together, "We") obtained the information above from sources believed to be reliable, however, We have not verified its accuracy and make no guarantee, warranty or representation, expressed or implied, about such information. The information contained above is submitted subject to the possibility of errors, omissions, price changes, rental or other conditions, prior sale, lease or financing, or withdrawal without notice. Any projections, opinions, assumptions or estimates of the information contained above or provided in connection therewith, either expressed or implied, are for example only, and they may not represent current or future performance of the subject property. You, together with your tax and legal advisors, should conduct your own thorough investigation of the subject property and potential investment.

Additional Photos

FOR SALE



Araceli Jugo

562.964.1667

araceli.jugo@expcommercial.com



eXp Commercial, LLC, its direct and indirect parents and their subsidiaries (together, "We") obtained the information above from sources believed to be reliable, however, We have not verified its accuracy and make no guarantee, warranty or representation, expressed or implied, about such information. The information contained above is submitted subject to the possibility of errors, omissions, price changes, rental or other conditions, prior sale, lease or financing, or withdrawal without notice. Any projections, opinions, assumptions or estimates of the information contained above or provided in connection therewith, either expressed or implied, are for example only, and they may not represent current or future performance of the subject property. You, together with your tax and legal advisors, should conduct your own thorough investigation of the subject property and potential investment.

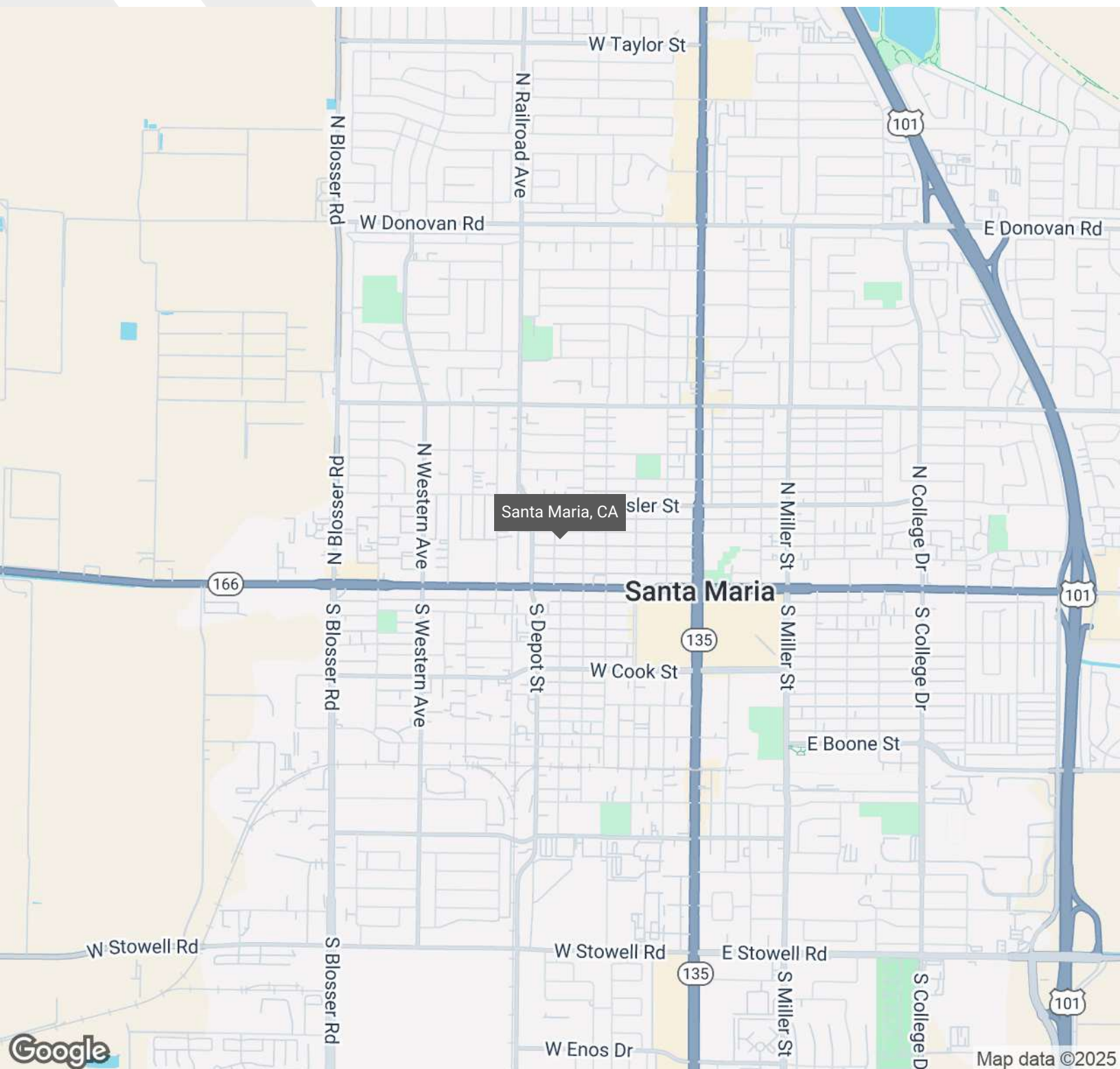


Section 2

Location Information

Regional Map

FOR SALE



Araceli Jugo

562.964.1667

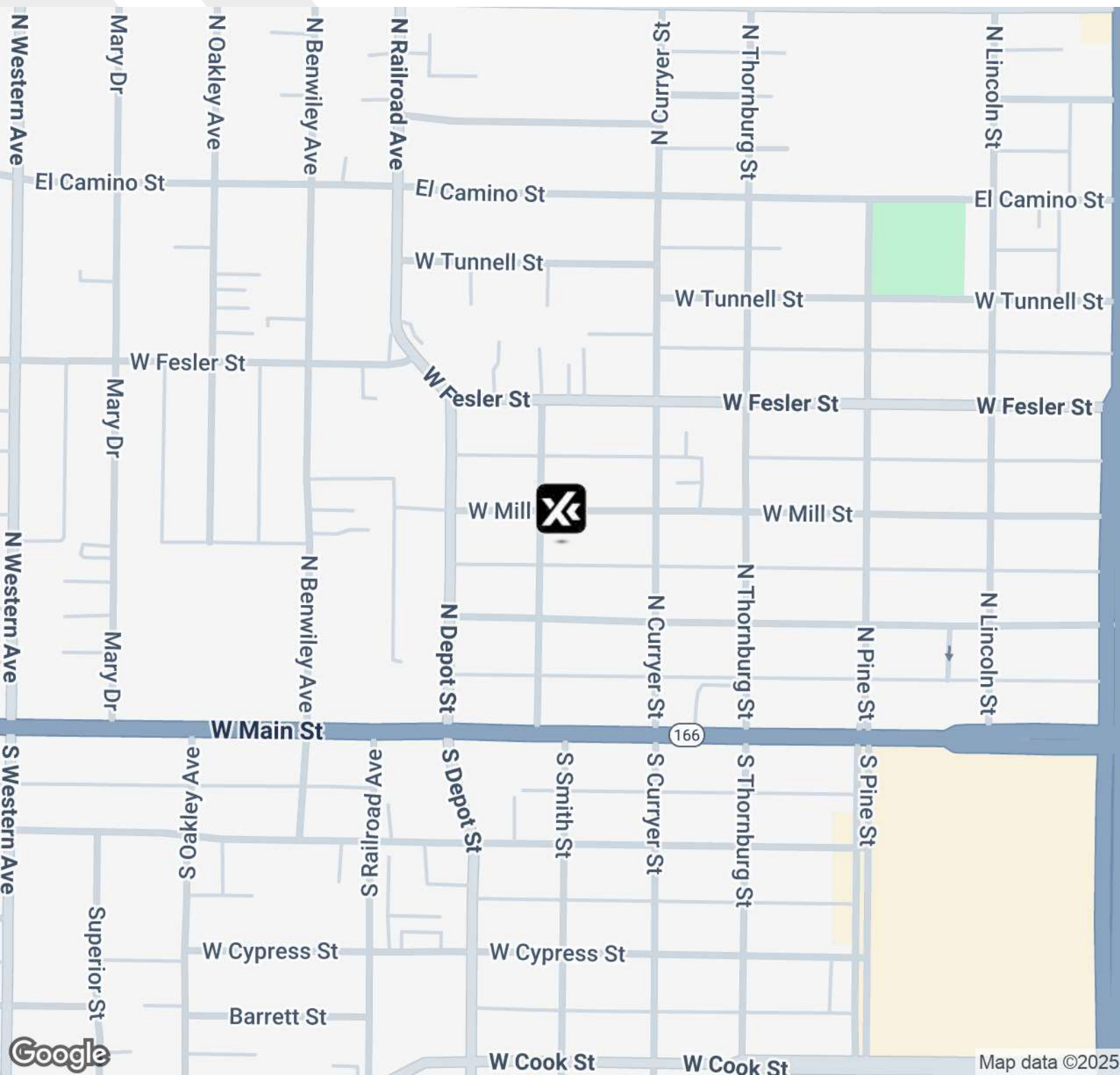
araceli.jugo@expcommercial.com



eXp Commercial, LLC, its direct and indirect parents and their subsidiaries (together, "We") obtained the information above from sources believed to be reliable, however, We have not verified its accuracy and make no guarantee, warranty or representation, expressed or implied, about such information. The information contained above is submitted subject to the possibility of errors, omissions, price changes, rental or other conditions, prior sale, lease or financing, or withdrawal without notice. Any projections, opinions, assumptions or estimates of the information contained above or provided in connection therewith, either expressed or implied, are for example only, and they may not represent current or future performance of the subject property. You, together with your tax and legal advisors, should conduct your own thorough investigation of the subject property and potential investment.

Location Map

FOR SALE



Araceli Jugo

562.964.1667

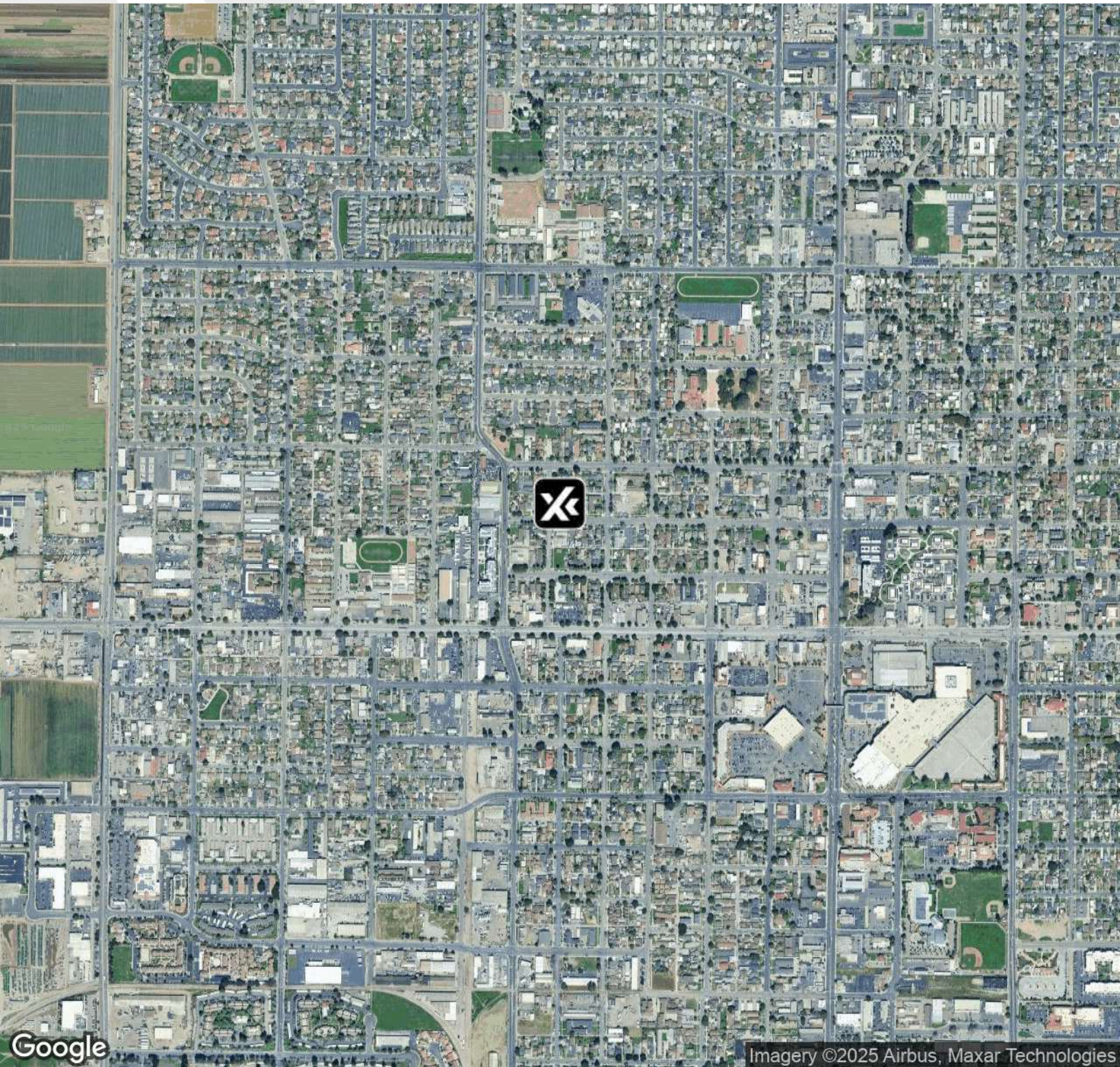
araceli.jugo@expcommercial.com



oXo Commercial, LLC, its direct and indirect parents and their subsidiaries (together, "We") obtained the information above from sources believed to be reliable, however, We have not verified its accuracy and make no guarantee, warranty or representation, expressed or implied, about such information. The information contained above is submitted subject to the possibility of errors, omissions, price changes, rental or other conditions, prior sale, lease or financing or withdrawal without notice. Any projections, opinions, assumptions or estimates of the information contained above or provided in connection therewith, either expressed or implied, are for example only, and they may not represent current or future performance of the subject property. You, together with your tax and legal advisors, should conduct your own thorough investigation of the subject property and potential investment.

Aerial Map

FOR SALE



Araceli Jugo

562.964.1667

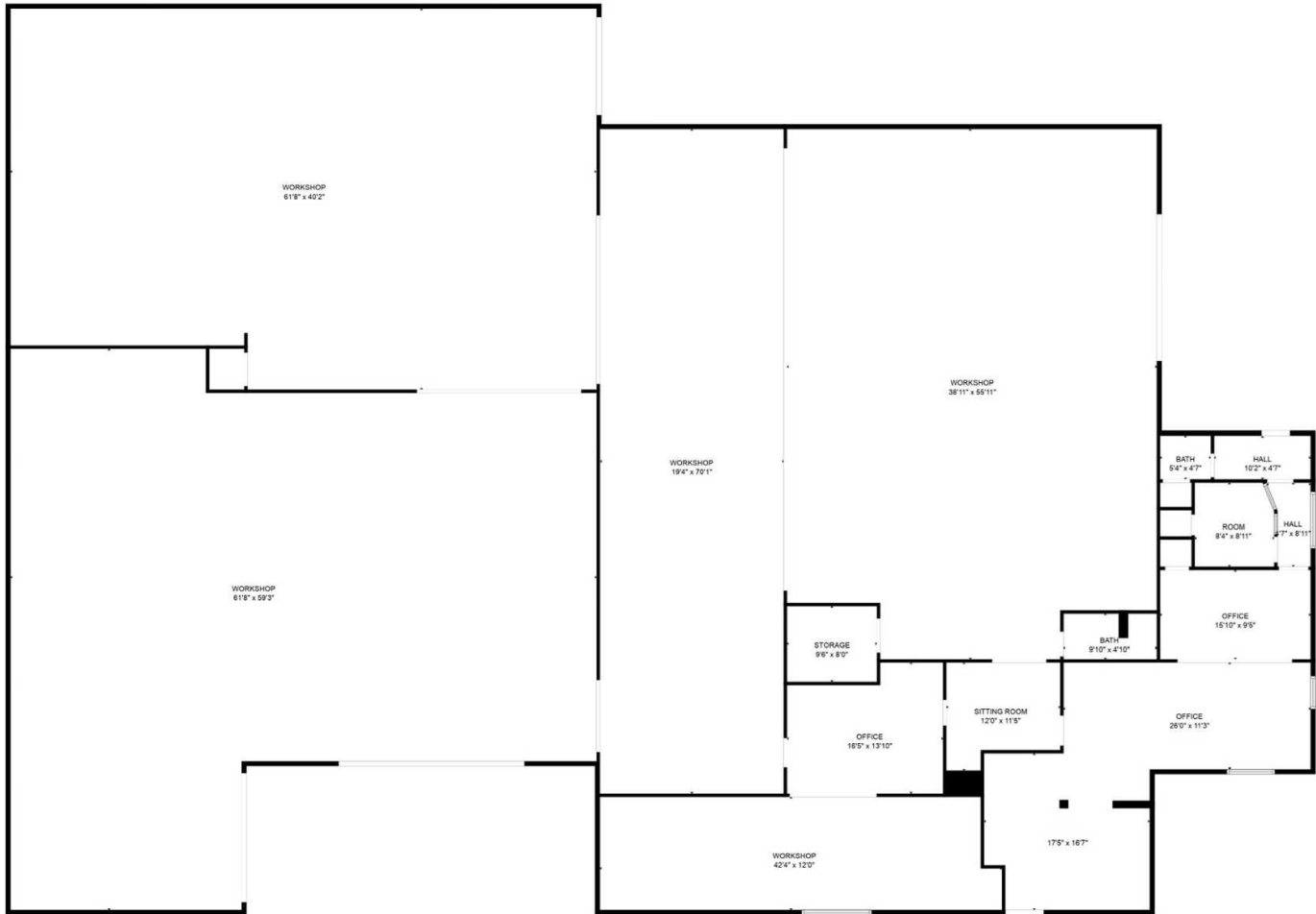
araceli.jugo@expcommercial.com



eXp Commercial, LLC, its direct and indirect parents and their subsidiaries (together, "We") obtained the information above from sources believed to be reliable, however, We have not verified its accuracy and make no guarantee, warranty or representation, expressed or implied, about such information. The information contained above is submitted subject to the possibility of errors, omissions, price changes, rental or other conditions, prior sale, lease or financing, or withdrawal without notice. Any projections, opinions, assumptions or estimates of the information contained above or provided in connection therewith, either expressed or implied, are for example only, and they may not represent current or future performance of the subject property. You, together with your tax and legal advisors, should conduct your own thorough investigation of the subject property and potential investment.

Site Plans

FOR SALE



TOTAL: 1379 sq. ft

FLOOR 1: 1379 sq. ft

EXCLUDED AREAS: WORKSHOP: 9222 sq. ft, STORAGE: 76 sq. ft, UNDEFINED: 9 sq. ft
WALLS: 249 sq. ft

FLOOR PLAN CREATED BY CUBICASA APP. MEASUREMENTS DEEMED HIGHLY RELIABLE BUT NOT GUARANTEED.

Araceli Jugo

562.964.1667

araceli.jugo@expcommercial.com



eXp Commercial, LLC, its direct and indirect parents and their subsidiaries (together, "We") obtained the information above from sources believed to be reliable, however, We have not verified its accuracy and make no guarantee, warranty or representation, expressed or implied, about such information. The information contained above is submitted subject to the possibility of errors, omissions, price changes, rental or other conditions, prior sale, lease or financing, or withdrawal without notice. Any projections, opinions, assumptions or estimates of the information contained above or provided in connection therewith, either expressed or implied, are for example only, and they may not represent current or future performance of the subject property. You, together with your tax and legal advisors, should conduct your own thorough investigation of the subject property and potential investment.

Section 3

Financial Analysis



Financial Summary

FOR SALE

INVESTMENT OVERVIEW

Price	\$1,499,000
Price per SF	\$136
Price per Unit	\$1,499,000
CAP Rate	6.16%

OPERATING DATA

Net Operating Income	\$92,400
----------------------	----------

FINANCING DATA

Araceli Jugo

562.964.1667

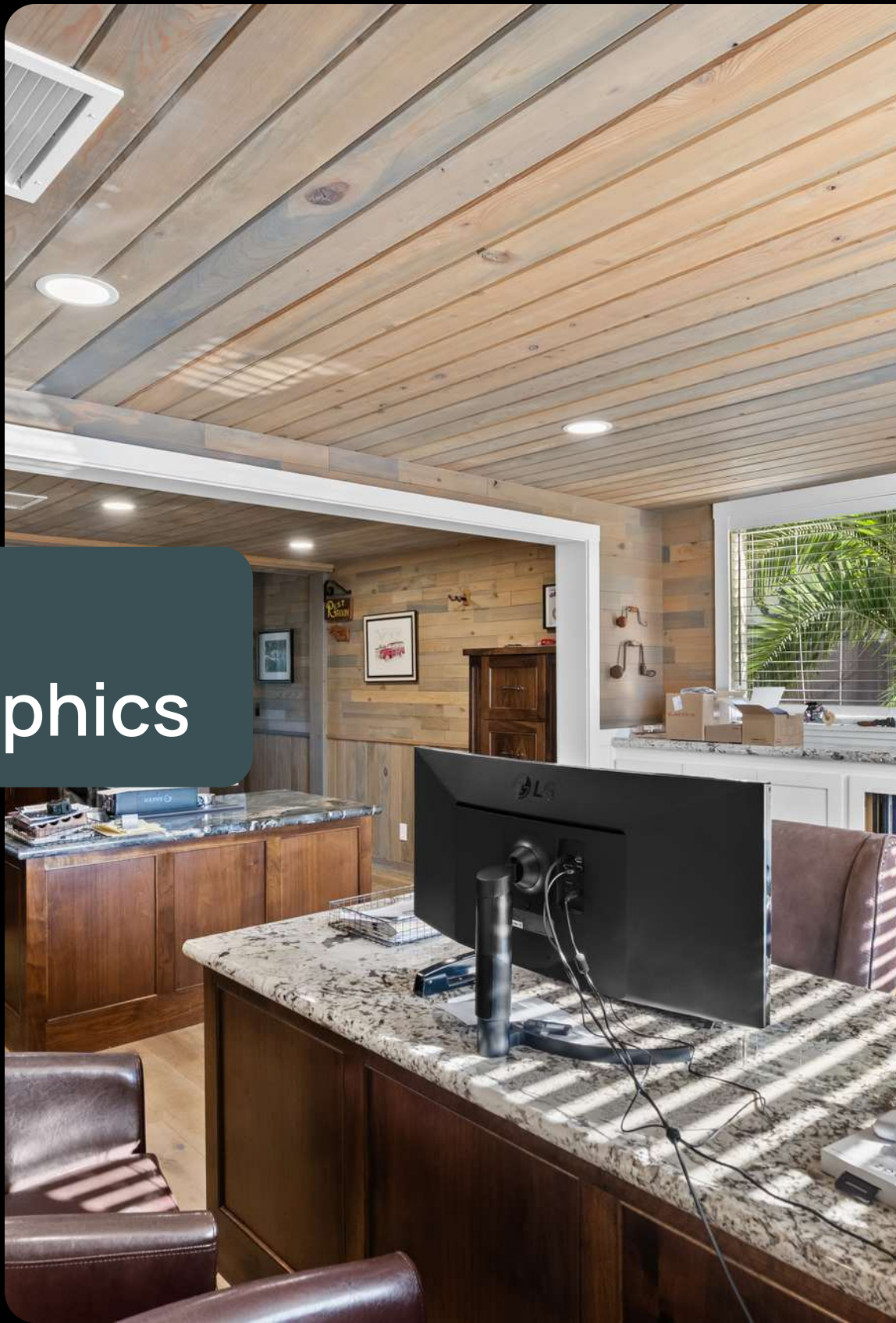
araceli.jugo@expcommercial.com



eXp Commercial, LLC, its direct and indirect parents and their subsidiaries (together, "We") obtained the information above from sources believed to be reliable, however, We have not verified its accuracy and make no guarantee, warranty or representation, expressed or implied, about such information. The information contained above is submitted subject to the possibility of errors, omissions, price changes, rental or other conditions, prior sale, lease or financing, or withdrawal without notice. Any projections, opinions, assumptions or estimates of the information contained above or provided in connection therewith, either expressed or implied, are for example only, and they may not represent current or future performance of the subject property. You, together with your tax and legal advisors, should conduct your own thorough investigation of the subject property and potential investment.

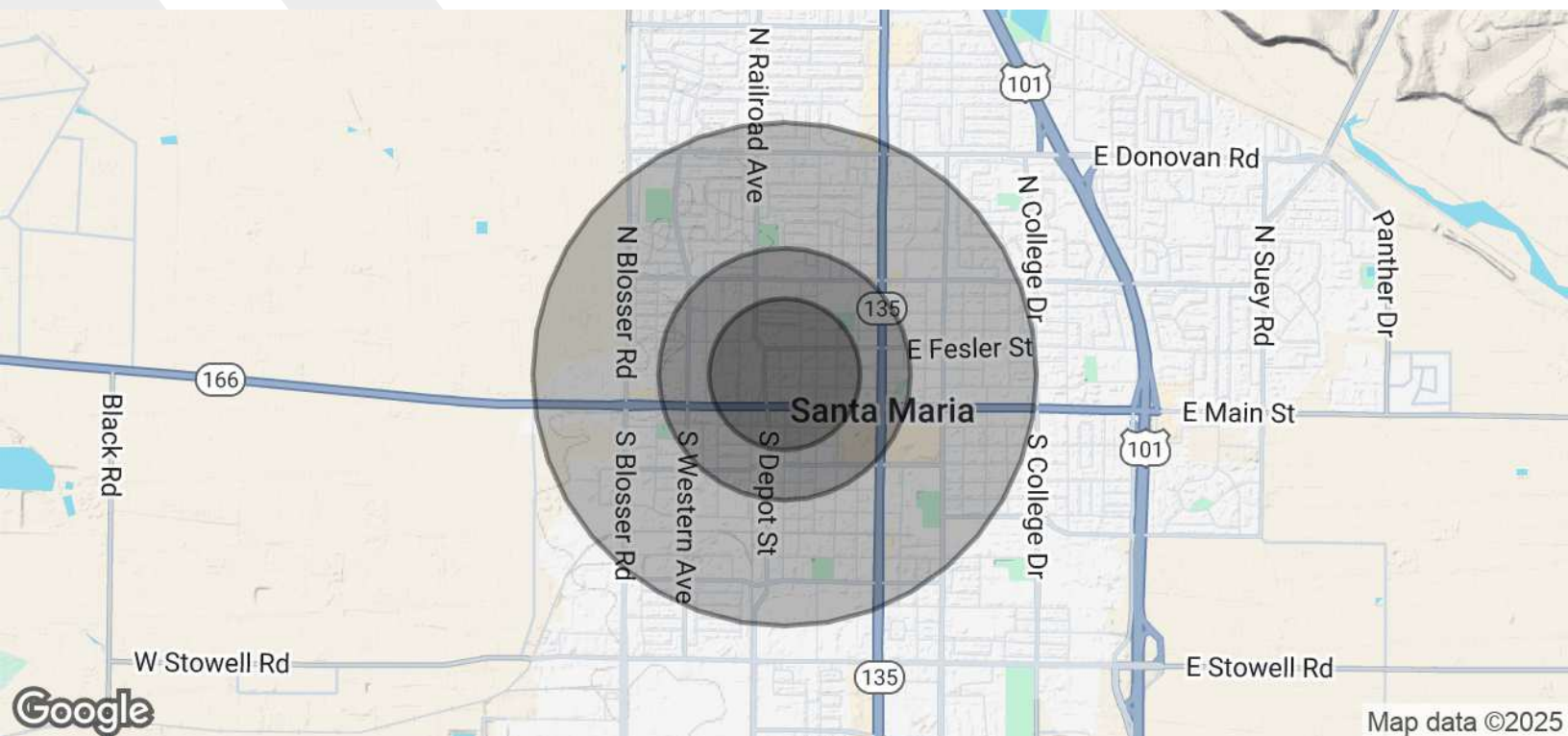
Section 4

Demographics



Demographics Map & Report

FOR SALE



POPULATION	0.3 MILES	0.5 MILES	1 MILE
Total Population	3,480	9,207	34,396
Average Age	30	30	31
Average Age (Male)	30	30	31
Average Age (Female)	30	31	31

HOUSEHOLDS & INCOME	0.3 MILES	0.5 MILES	1 MILE
Total Households	745	1,978	7,921
# of Persons per HH	4.7	4.7	4.3
Average HH Income	\$79,578	\$77,139	\$79,776
Average House Value	\$391,691	\$421,121	\$457,430

Demographics data derived from AlphaMap

Araceli Jugo

562.964.1667

araceli.jugo@expcommercial.com



eXp Commercial, LLC, its direct and indirect parents and their subsidiaries (together, "We") obtained the information above from sources believed to be reliable, however, We have not verified its accuracy and make no guarantee, warranty or representation, expressed or implied, about such information. The information contained above is submitted subject to the possibility of errors, omissions, price changes, rental or other conditions, prior sale, lease or financing, or withdrawal without notice. Any projections, opinions, assumptions or estimates of the information contained above or provided in connection therewith, either expressed or implied, are for example only, and they may not represent current or future performance of the subject property. You, together with your tax and legal advisors, should conduct your own thorough investigation of the subject property and potential investment.

Thank you!

Thank you for your consideration of this investment opportunity in Santa Maria. We are confident this property represents strong value in today's market. For further details, underwriting support, or to schedule a tour, please contact us directly.



Araceli Jugo

562.964.1667

araceli.jugo@expcommercial.com
www.expcommercial.com