



LEASE

Office/Warehouse

18709 INTERSTATE 30 FRONTAGE ROAD

Benton, AR 72015

PRESENTED BY:

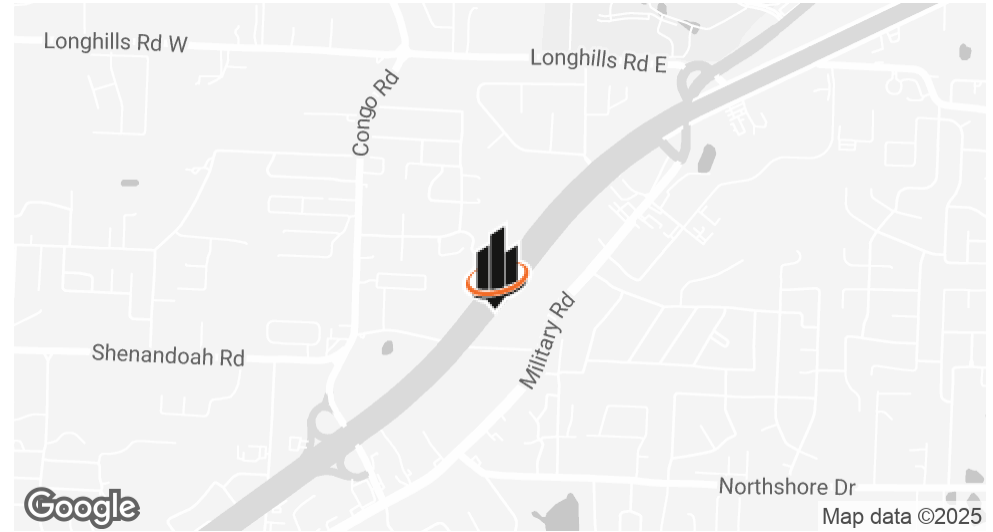
TIFFANI SILVEY

O: 501.499.4739

tiffani.silvey@svn.com

AR #SA00097857

PROPERTY SUMMARY



OFFERING SUMMARY

LEASE RATE:	\$4,500.00 SF/yr (MG)
AVAILABLE SF:	4,000 SF
LOT SIZE:	1 Acres
BUILDING SIZE:	4,000 SF

PROPERTY DESCRIPTION

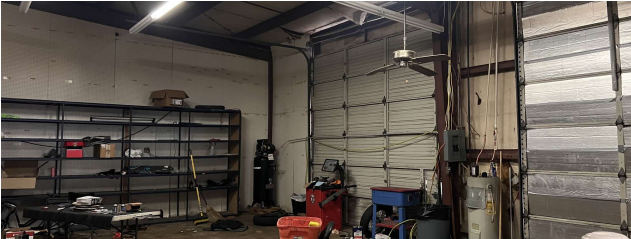
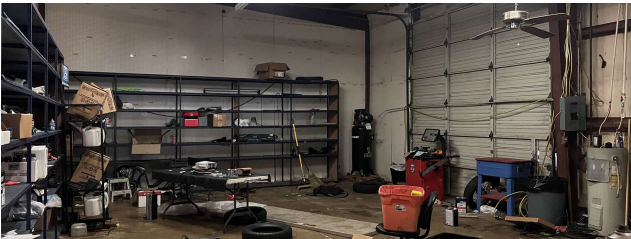
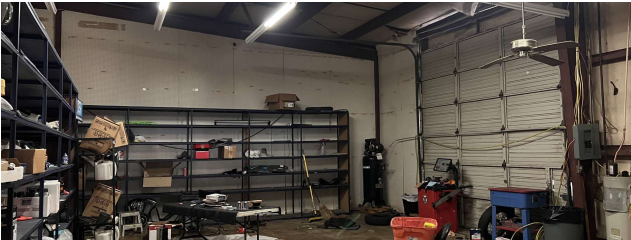
Great opportunity to lease a versatile commercial property with high visibility and convenient accessibility along Interstate 30.

PROPERTY HIGHLIGHTS

- Building Size: 4,000 sq. ft.
- Lot Size: 1 acre
- Flexible Layout: Suitable for office, retail, service businesses, or warehouse use.
- Prime Visibility: High daily traffic counts from I-30.
- Parking: Ample on-site parking for staff and visitors.

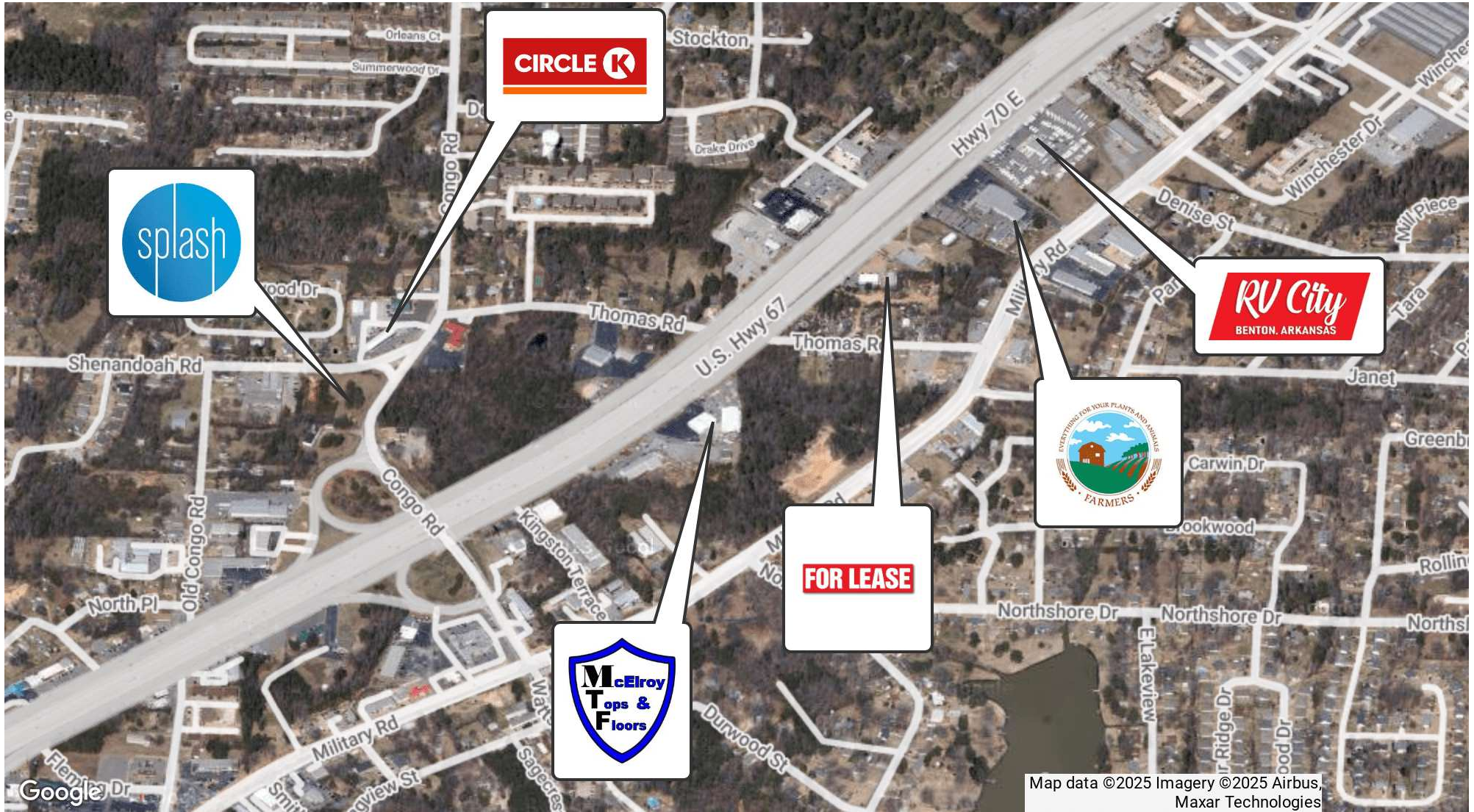
TIFFANI SILVEY
O: 501.499.4739
tiffani.silvey@svn.com
AR #SA00097857

ADDITIONAL PHOTOS



TIFFANI SILVEY
O: 501.499.4739
tiffani.silvey@svn.com
AR #SA00097857

LOCATION MAP



TIFFANI SILVEY
O: 501.499.4739
tiffani.silvey@svn.com
AR #SA00097857