



THE LORD COMPANIES L.L.C.

For Lease

Pilsen Retail | Medical | Office Space



2,200 SF located at 1852 S Blue Island Ave, Chicago, IL



+ 2,200 SF of ground floor retail, office, or medical space

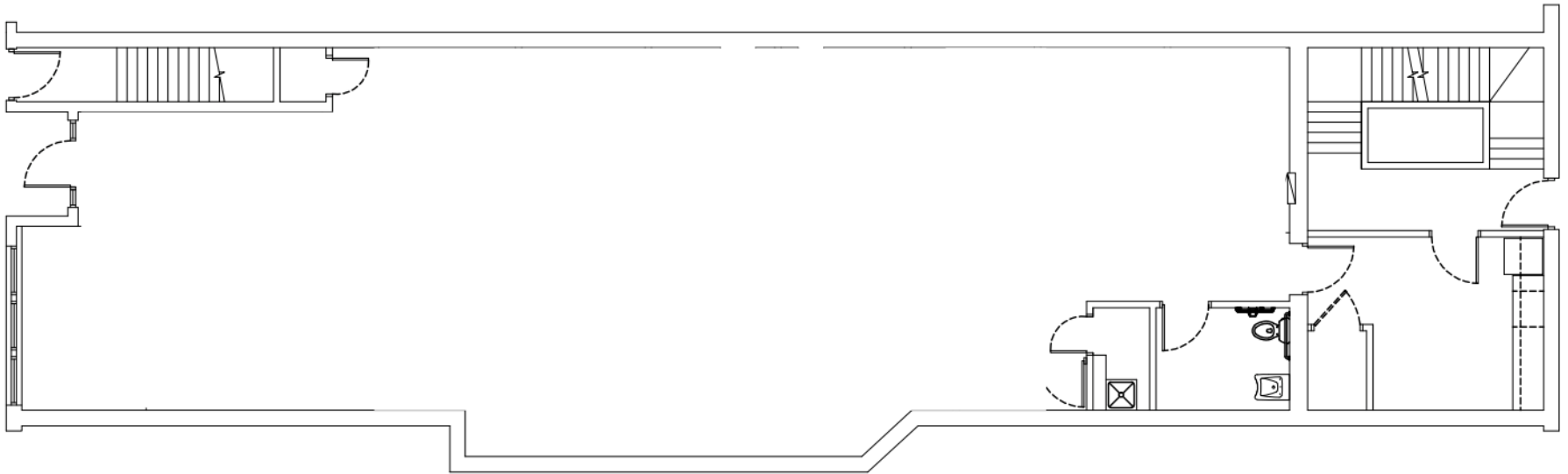
+ Easy access to I-55, I-90/94, I-290, and a short 10-minute walk to the CTA Pink line

+ Located in Chicago's Pilsen neighborhood just south of the intersection of 18th Street, Blue Island, and Loomis Street

+ Blue Island Avenue is a designated Pedestrian Street and underwent a streetscape improvement project

Floorplan

+ 1st floor: 2,200 SF



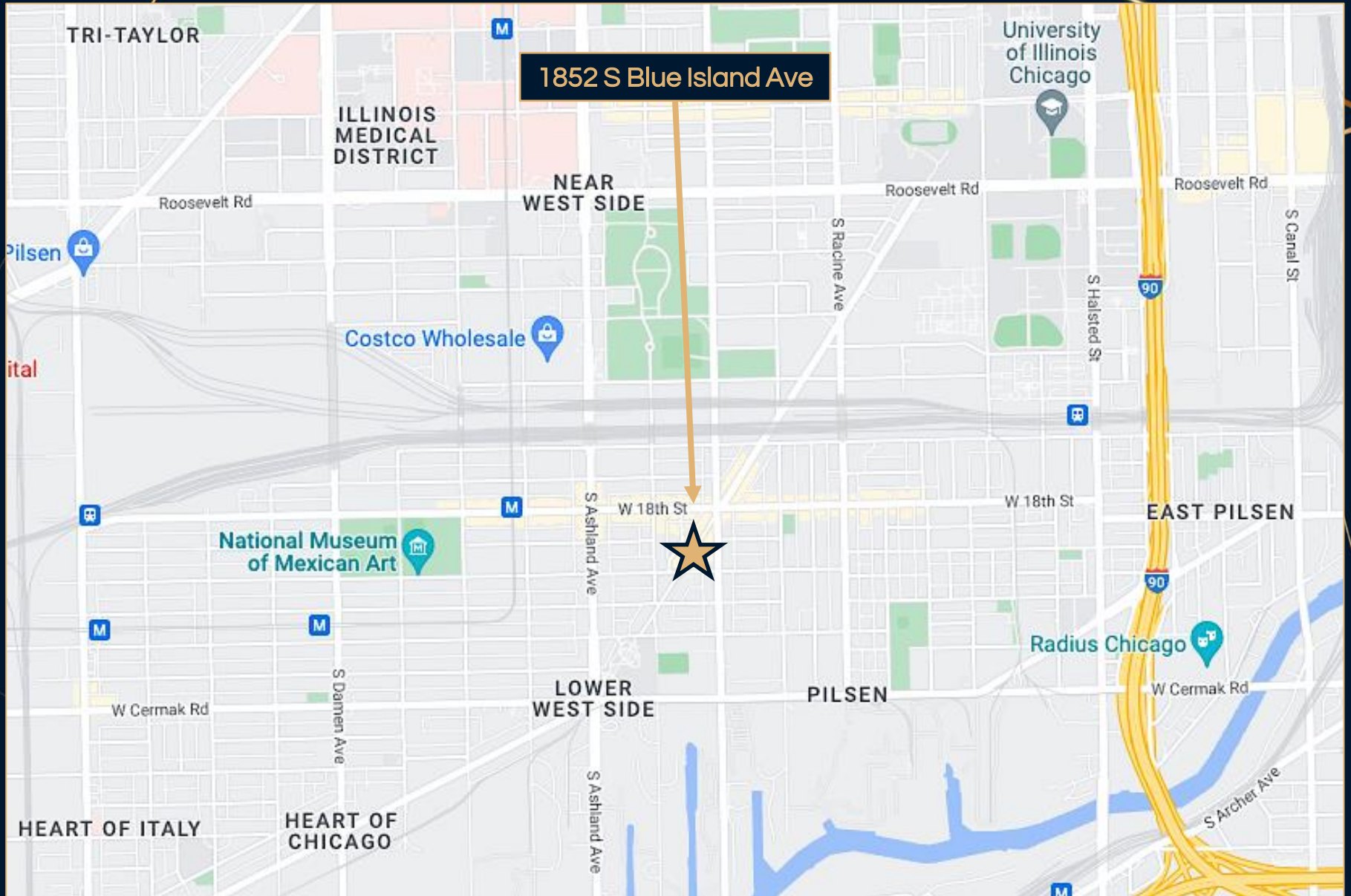
+ Column Free Space

+ 1 bathroom

+ 1st Floor of 4 Story Building

+ Access to Back Alley

Location Map



Area Retailers



Area Retailers



DEMOGRAPHICS



	1 mile	2 mile	3 mile
Population	38,983	160,754	383,932
Households	13,930	65,337	158,515
Average HH Size	2.6	2.3	2.2
Average HH Income	\$81,263	\$103,356	\$111,587
Median HH Income	\$59,645	\$73,509	\$81,219
Daytime Businesses	1,781	12,009	37,472
Daytime Employees	18,649	162,575	604,630

1852 S Blue Island Ave

Chelsea Henderson
847-337-5287
Chelsea@LordCompanies.com



*Broker is using information provided by the property owner and does not certify as to its accuracy. This information is subject to possible errors, omissions, changes of price, and withdrawal without notice.