

OGDEN RIVERVIEW

FOR SALE OR LEASE



MOUNTAIN WEST
COMMERCIAL REAL ESTATE

SHAYDON WOOD

swood@mwcre.com
direct 801.456.8810
[View Profile](#)

BRAXTON WILLIE

bwillie@mwcre.com
direct 385.429.5501
[View Profile](#)

PROPERTY DETAILS

2800 WEST 1200 SOUTH
MARRIOTT-SLATERVILLE, UT 84404

- 30.02-acre project
- Current zoning: C-2P
- Site work currently underway
- Parcel ID: 15-060-0175, 15-060-0176, 15-061-0125, 15-061-0126
- Contact agent for additional details

SURROUNDING TENANTS



2024 DEMOS

EST. POPULATION

1 MILE » 1,784
3 MILE » 18,380
5 MILE » 126,767

EST. HOUSEHOLDS

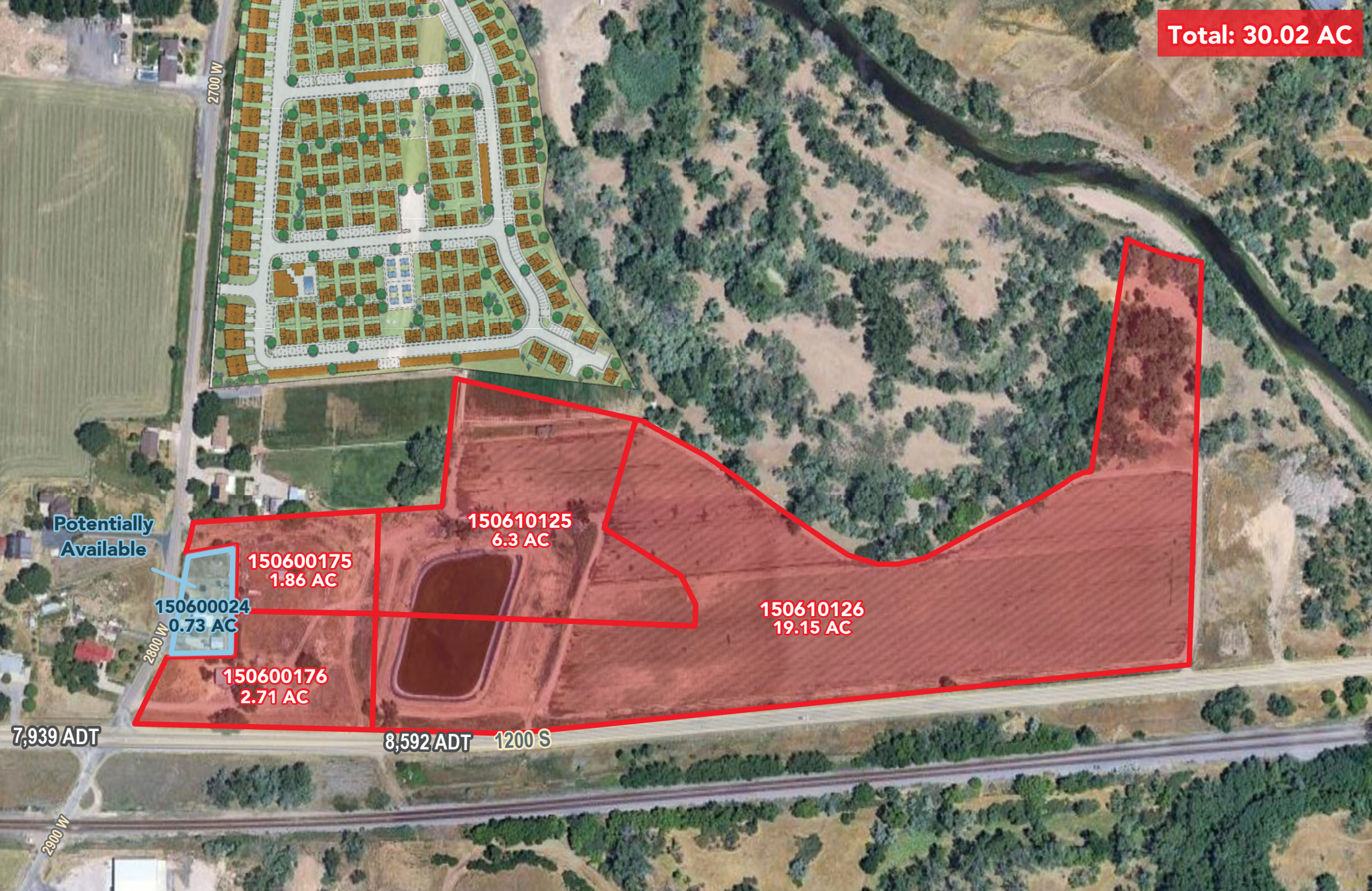
1 MILE » 622
3 MILE » 6,208
5 MILE » 45,462

EST. AVERAGE HH INCOME

1 MILE » \$107,913
3 MILE » \$106,887
5 MILE » \$92,215

**FULL SERVICE
COMMERCIAL REAL ESTATE**
312 East South Temple
Salt Lake City, UT 84111
Office 801.456.8800
www.mwcre.com

Total: 30.02 AC



Potentially Available

150600024
0.73 AC

150600175
1.86 AC

150610125
6.3 AC

150610126
19.15 AC

150600176
2.71 AC

7,939 ADT

8,592 ADT 1200 S

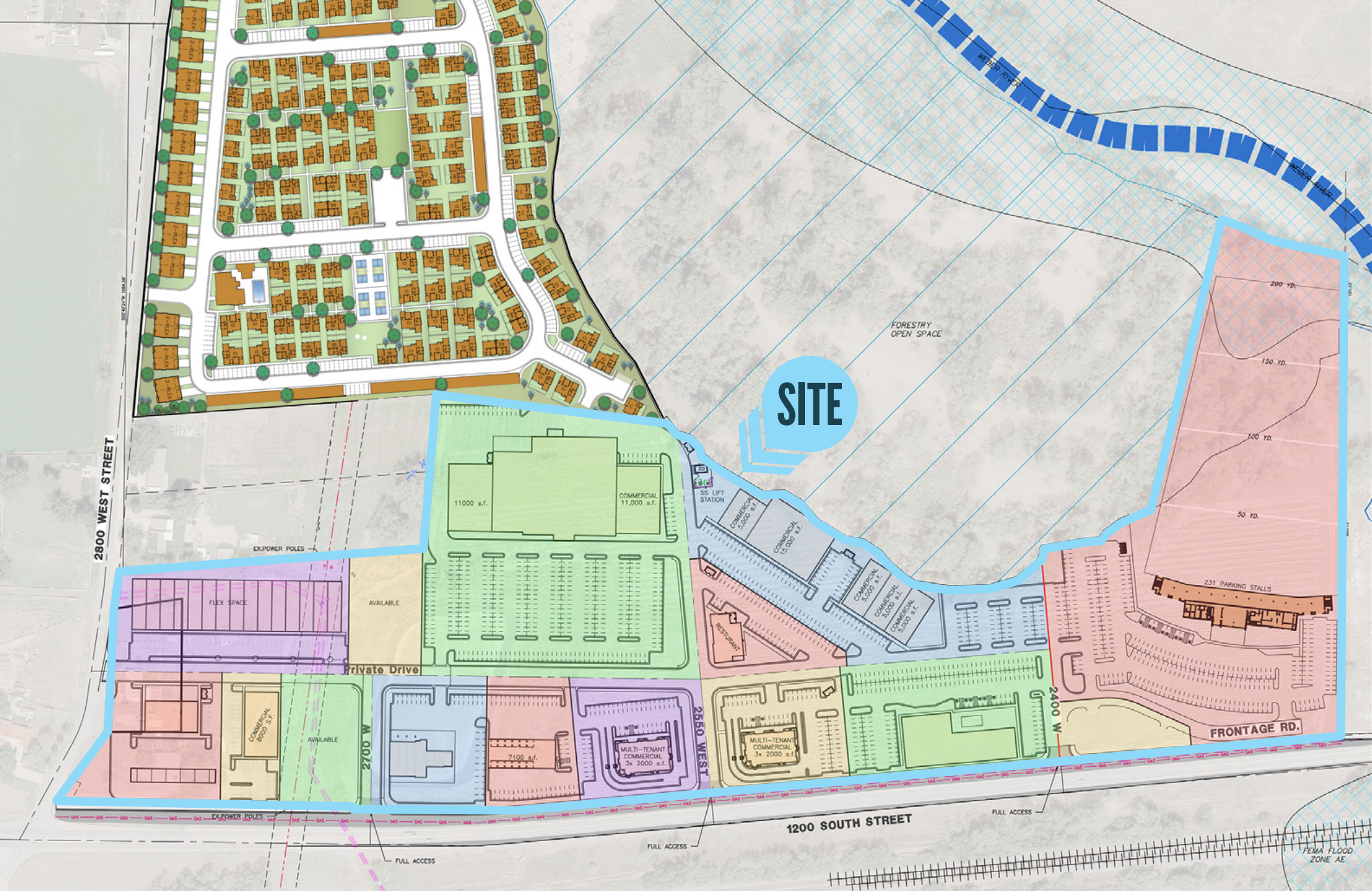


SHAYDON WOOD
swood@mwcre.com
direct 801.456.8810
[View Profile](#)

BRAXTON WILLIE
bwillie@mwcre.com
direct 385.429.5501
[View Profile](#)

FULL SERVICE
COMMERCIAL REAL ESTATE
312 East South Temple
Salt Lake City, UT 84111
Office 801.456.8800
www.mwcre.com

This statement with the information it contains is given with the understanding that all negotiations relating to the purchase, renting or leasing of the property described above shall be conducted through this office. The above information while not guaranteed has been secured from sources we believe to be reliable.

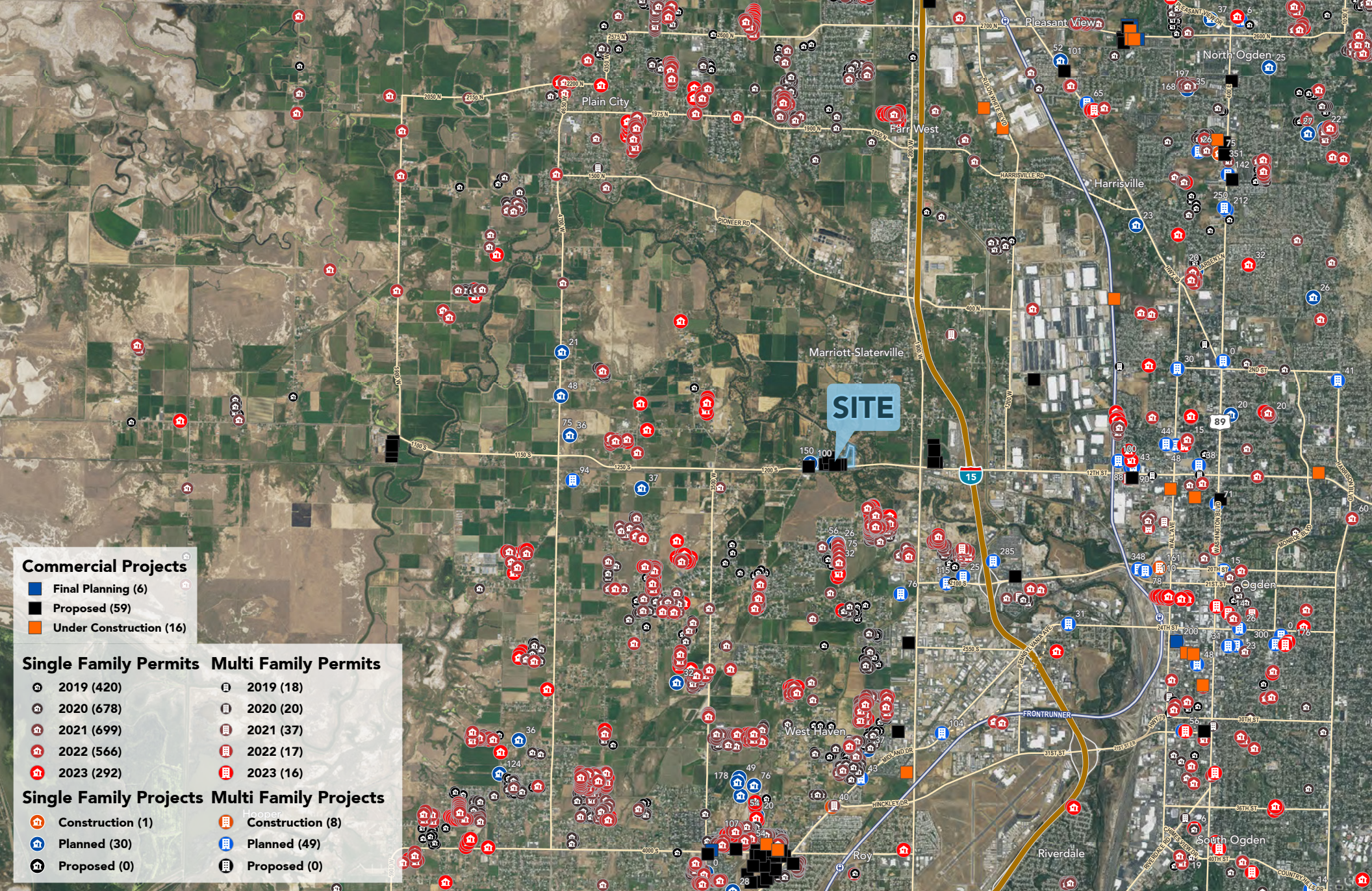


MOUNTAIN WEST
COMMERCIAL REAL ESTATE

SHAYDON WOOD
swood@mwcre.com
direct 801.456.8810
[View Profile](#)

BRAXTON WILLIE
bwillie@mwcre.com
direct 385.429.5501
[View Profile](#)

**FULL SERVICE
COMMERCIAL REAL ESTATE**
312 East South Temple
Salt Lake City, UT 84111
Office 801.456.8800
www.mwcre.com



Commercial Projects

- Final Planning (6)
- Proposed (59)
- Under Construction (16)

Single Family Permits	Multi Family Permits
2019 (420)	2019 (18)
2020 (678)	2020 (20)
2021 (699)	2021 (37)
2022 (566)	2022 (17)
2023 (292)	2023 (16)

Single Family Projects	Multi Family Projects
Construction (1)	Construction (8)
Planned (30)	Planned (49)
Proposed (0)	Proposed (0)



SHAYDON WOOD
 swood@mwcre.com
 direct 801.456.8810
[View Profile](#)

BRAXTON WILLIE
 bwillie@mwcre.com
 direct 385.429.5501
[View Profile](#)

**FULL SERVICE
 COMMERCIAL REAL ESTATE**
 312 East South Temple
 Salt Lake City, UT 84111
 Office 801.456.8800
www.mwcre.com

This statement with the information it contains is given with the understanding that all negotiations relating to the purchase, renting or leasing of the property described above shall be conducted through this office. The above information while not guaranteed has been secured from sources we believe to be reliable.