



Concourse III

5200 Belfort Road
Jacksonville, Florida 32256

Property Highlights

- Three 100,000 SF buildings surrounding a lushly landscaped courtyard, gazebo and water feature
- Newly renovated lobby areas
- Solid cherry lobby entrances
- High volume ceilings
- Class A finishes throughout
- Concourse Cafe on-site
- On-site workout facility
- Frontage on Interstate 95
- Easy access to Butler Boulevard, Belfort Road and Interstate 95

Property Description

The Concourse's unique master plan features three buildings clustered around an open-air gathering place. This outdoor "people place" is designed to give the occupants of the project an area to congregate, relax and enjoy the serenity of the peaceful setting. This area includes a large patio or terrace area with seating and pedestrian space overlooking a large lake. The project is easily visible from I-95 and is recognized as one of Jacksonville's premier suburban office addresses.

OFFERING SUMMARY

Available SF	3,366 - 9,030 SF
Lease Rate	\$24.00 SF/yr (Full Service)
Lot Size	6.83 Acres
Building Size	96,049 SF

AVAILABLE SPACES

Space	Lease Rate	Size (SF)
Suite 400	\$24.00 SF/yr	9,030
Suite 430	\$24.00 SF/yr	3,366

For more information



Patrick Carney

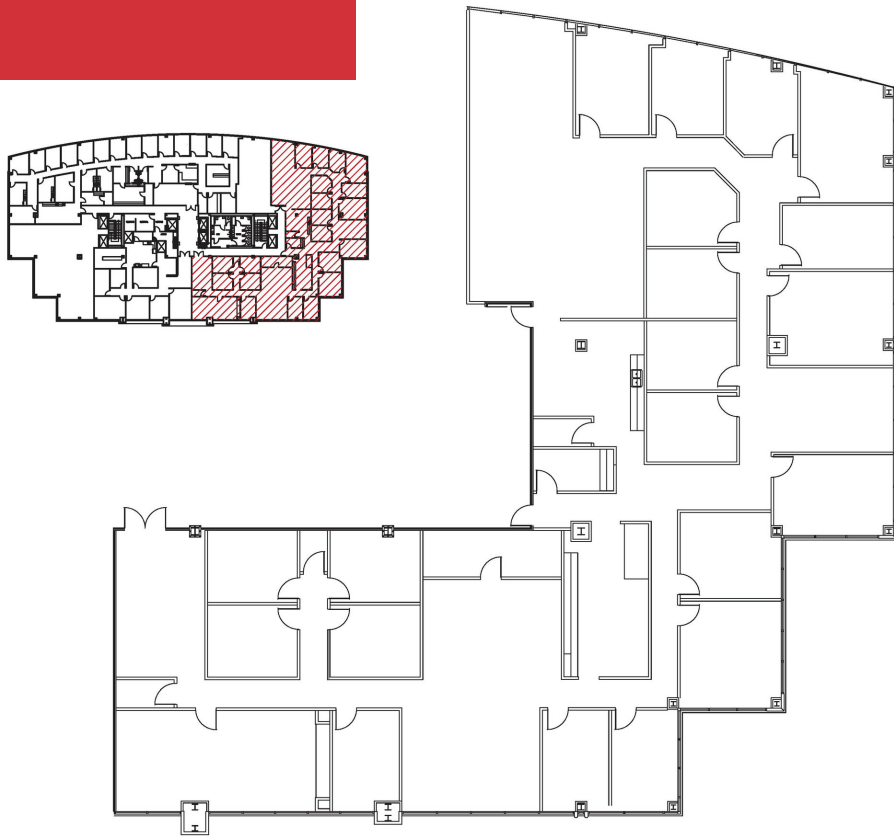
O: 904 404 4456
pc@naih hallmark.com



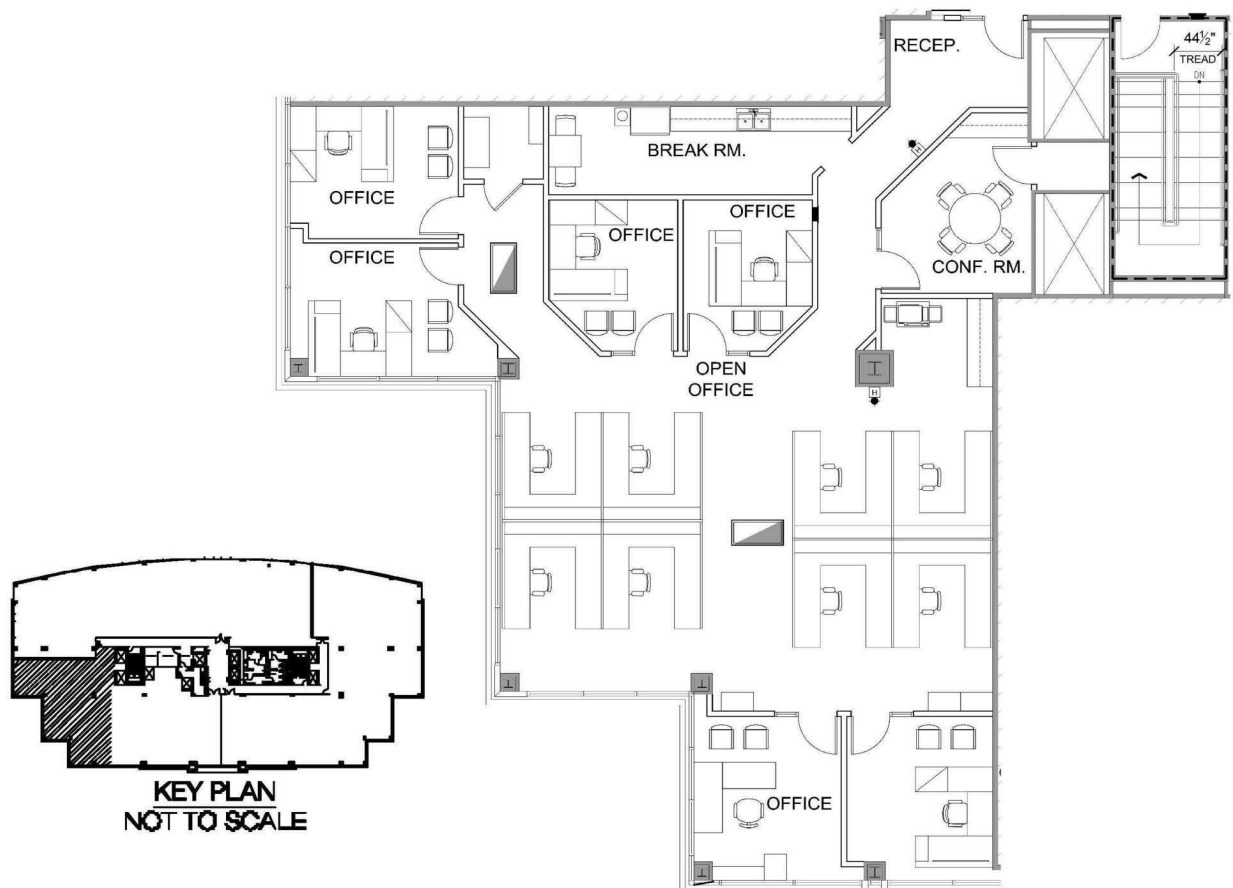
Sydney Miles

O: 904 404 5566
sm@naih hallmark.com

Floor Plans

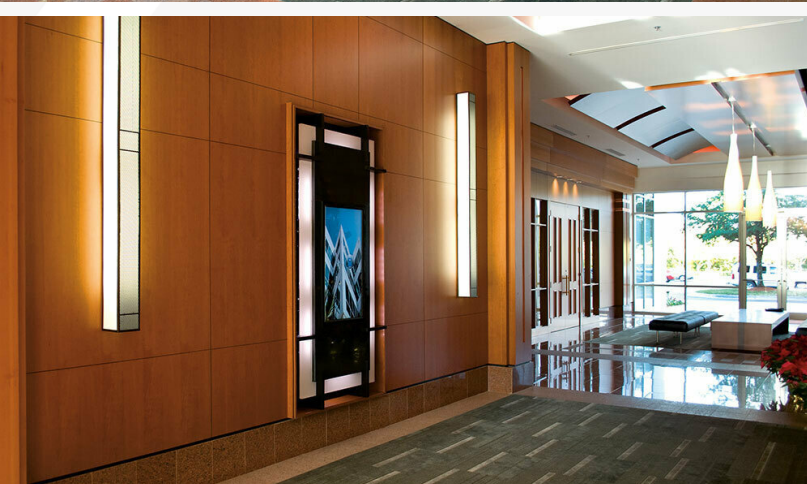


Suite 400 - 9,030 SF



Suite 430 - 3,366 SF

Additional Photos



Location Maps

