



OFFICE/MEDICAL AVAILABLE

253 LEWIS LANE | HAYRE DE GRACE, MARYLAND 21078

FOR
LEASE



MACKENZIE

COMMERCIAL REAL ESTATE SERVICES, LLC

PROPERTY OVERVIEW

HIGHLIGHTS:

- Prime Havre de Grace location with direct Route 40 access and close proximity to Upper Chesapeake Campus
- Class A construction with covered patient drop-off area
- Upgraded parking lot, exterior signage, landscaping, and common areas
- Free surface parking
- 1st year free rent for 6 year term and 3 month security deposit
- Landlord to deliver turnkey buildout

AVAILABLE:

SUITE 102: 732 SF ±
SUITE 103: 787 SF ±
CAN BE COMBINED TO 1,519 SF
SUITE 104: 1,160 SF ±
SUITE 105: 724 SF ±
SUITE 106: 938 SF ±
CAN BE COMBINED TO 2,822 SF

BUILDING SIZE:

30,000 SF ±

PARKING:

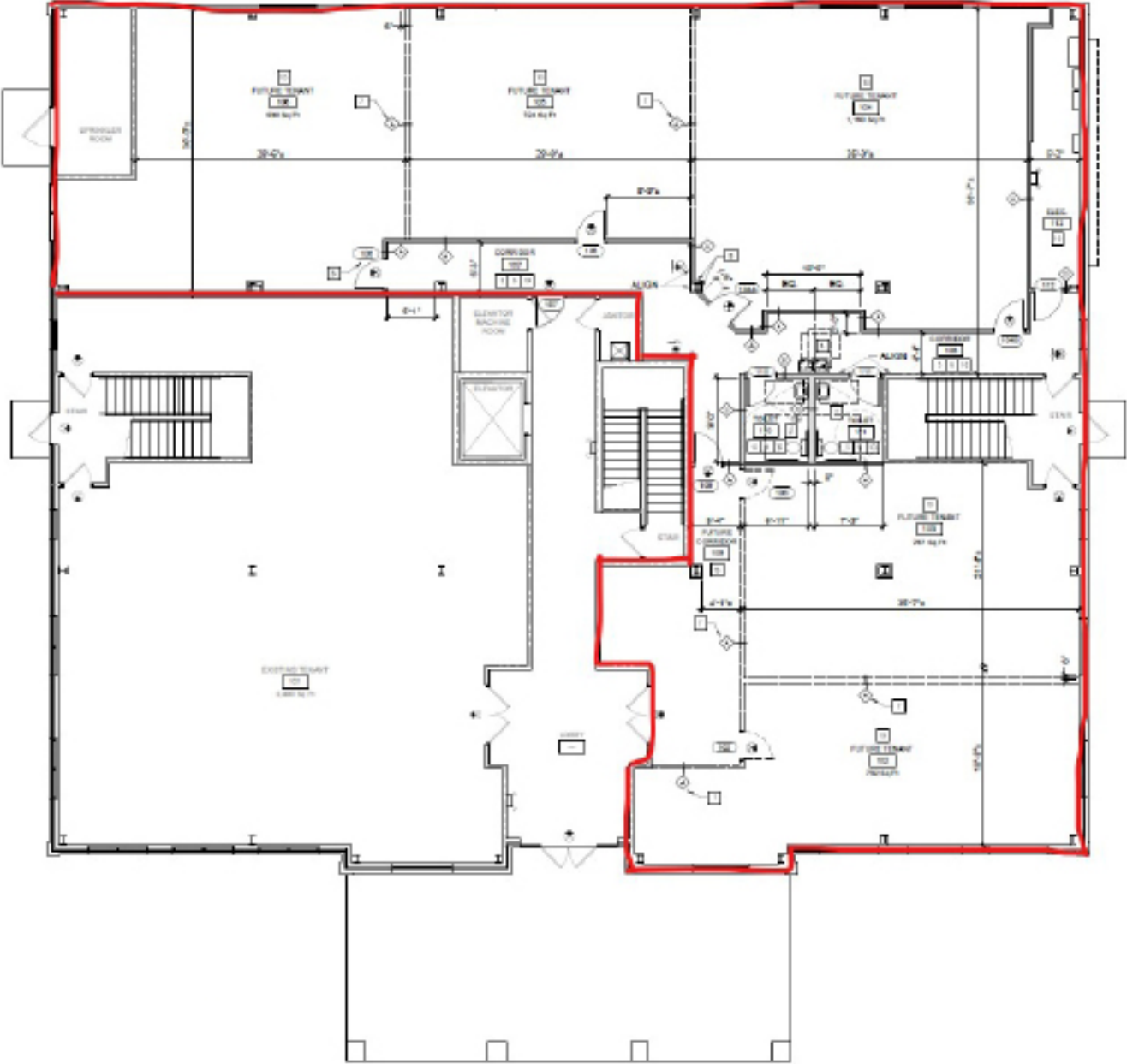
4:1,000 SF

RENTAL RATE:

\$16.00/SF, NNN



FLOOR PLAN



DEMOGRAPHICS

2025

RADIUS:

1 MILE

3 MILES

5 MILES

RESIDENTIAL POPULATION



9,637

23,428

46,805

DAYTIME POPULATION



10,696

22,995

46,629

AVERAGE HOUSEHOLD INCOME



\$108,407

\$127,514

\$113,775

NUMBER OF HOUSEHOLDS



4,120

9,732

19,355

MEDIAN AGE

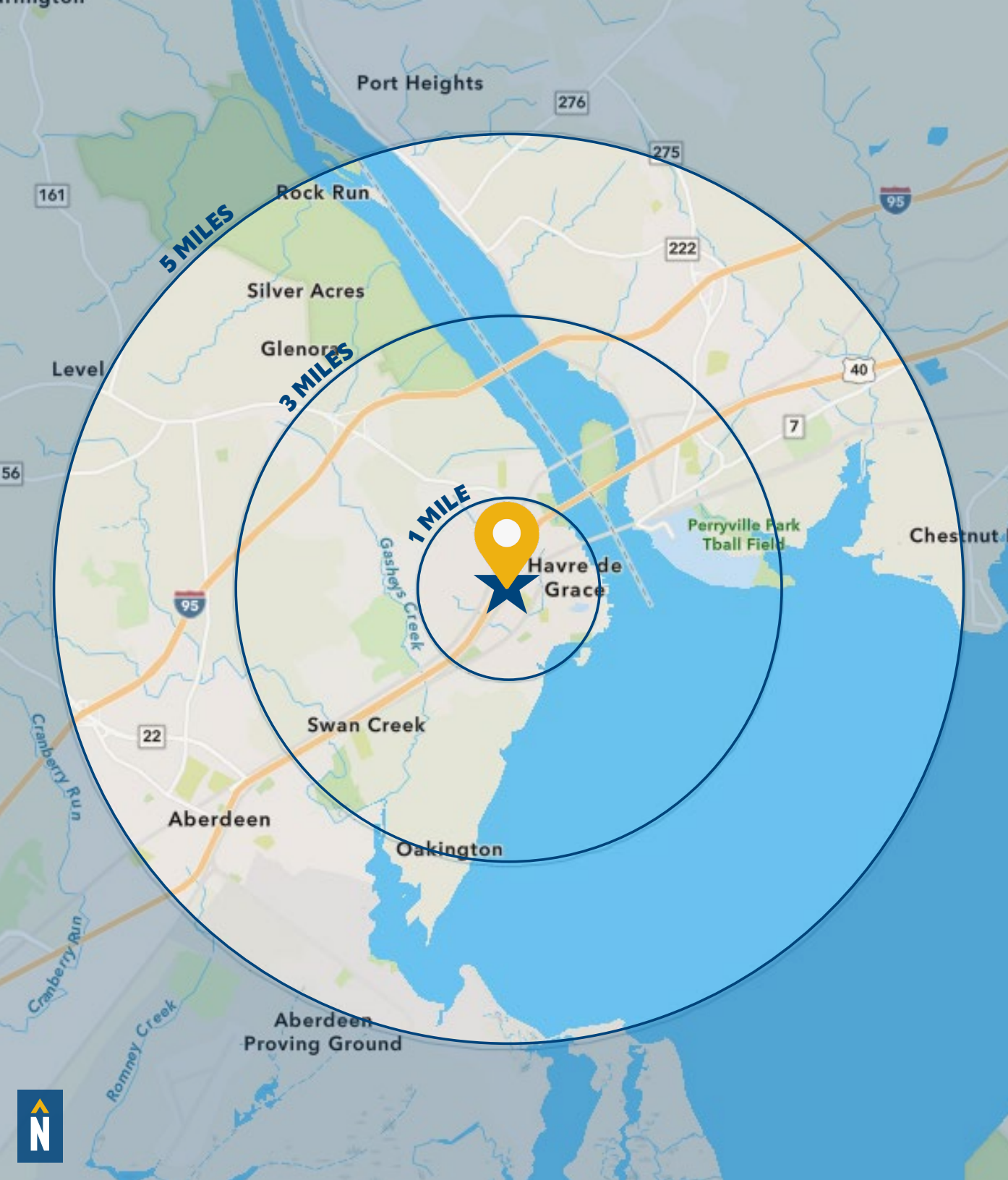


43.9

45.8

43.4

FULL DEMOS REPORT



FOR MORE INFO **CONTACT:**



TOM MOTTLEY

SENIOR VICE PRESIDENT & PRINCIPAL

443.573.3217

TMOTTLEY@mackenziecommercial.com



BEETLE SMITH

SENIOR VICE PRESIDENT

443.573.3219

BSMITH@mackenziecommercial.com



JOHN MICHAEL

REAL ESTATE ADVISOR

443.573.3207

JMICHAEL@mackenziecommercial.com



MACKENZIE

COMMERCIAL REAL ESTATE SERVICES, LLC

410-821-8585

2328 W. Joppa Road, Suite 200

Lutherville, MD 21093

OFFICES IN: ANNAPOLIS, MD BALTIMORE, MD BEL AIR, MD COLUMBIA, MD LUTHERVILLE, MD CHARLOTTESVILLE, VA

www.MACKENZIECOMMERCIAL.com



VISIT **PROPERTY PAGE** FOR MORE INFORMATION.

No warranty or representation, expressed or implied, is made as to the accuracy of the information contained herein, and same is submitted subject to errors, omissions, change of price, rental or other conditions, withdrawal without notice, and to any specific listing conditions imposed by our principals.