

FirstBank in Wheat Ridge

4350 Wadsworth Boulevard, Wheat Ridge, CO 80033

GREAT MEDICAL SUITES OR PROFESSIONAL OFFICES



PROPERTY HIGHLIGHTS

- GREAT LOCATION AT 44TH AND WADSWORTH. MINUTES FROM DOWNTOWN WITH EASY ACCESS OFF I-70 OR 6TH AVENUE
- EASY COMMUTE FROM WESTERN AND NORTHERN SUBURBS
- CLOSE PROXIMITY TO DOWNTOWN, BOULDER CORRIDOR, EXEMPLA LUTHERAN MEDICAL CENTER, AND THE WHEAT RIDGE RECREATIONAL CENTER
- BUILDING LOBBY AND COMMON AREA UPGRADES RECENTLY COMPLETED
- AMENITIES INCLUDE TELECOMMUNICATIONS FROM CENTURYLINK AND COMCAST, ON-SITE BANK, 2-STORY ATRIUM LOBBY, AND CONVENIENT ACCESS TO RESTAURANTS, RETAIL AND OTHER SERVICES
- 3.2/1,000 SF PARKING
- NEAR THE WADSWORTH LIGHT RAIL STATION

For leasing information please contact:

Michelle Gertzman | 720.743.6399
mgertzman@premisescommercial.com

Matt Smith | 303.996.8460
msmith@premisescommercial.com

PREMISES
PREMISES COMMERCIAL REAL ESTATE LLC
WWW.PREMISESCOMMERCIAL.COM

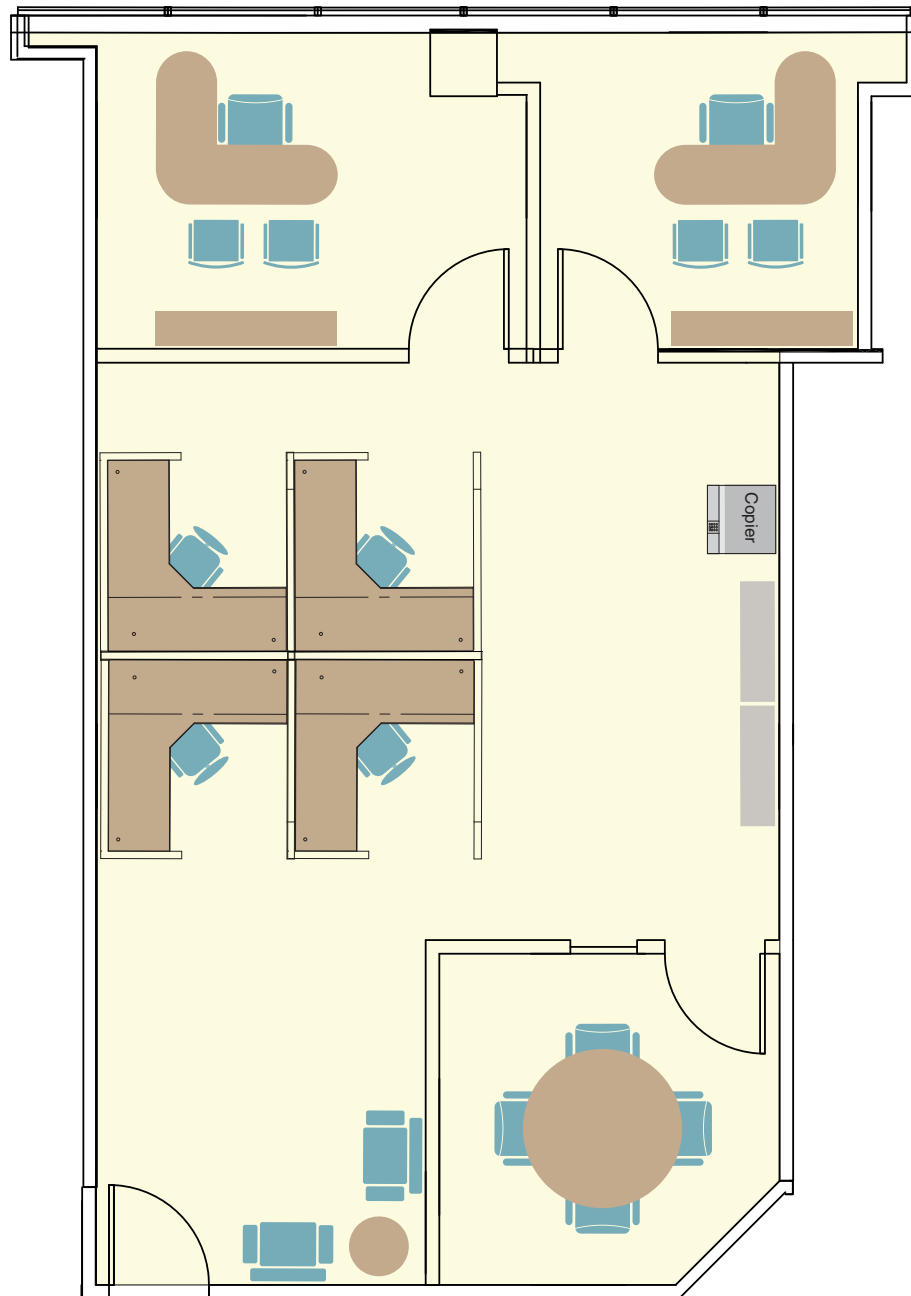
FirstBank in Wheat Ridge

4350 Wadsworth Boulevard, Wheat Ridge, CO 80033

AVAILABLE SUITES

Suite 405

924 sf



WWW.PREMISESCOMMERCIAL.COM

The information contained herein, while not guaranteed, has been secured from sources we believe to be reliable. Different brokerage relationships are available which include Seller/Landlord Agency, Buyer/Tenant Agency and Transaction Broker. Premises Commercial Real Estate, LLC is acting in this capacity as Landlord's/Sublessor's Agent, unless otherwise agreed, and owes its fiduciary allegiance to Landlord/Sublessor as defined by Colorado Real Estate Commission.