

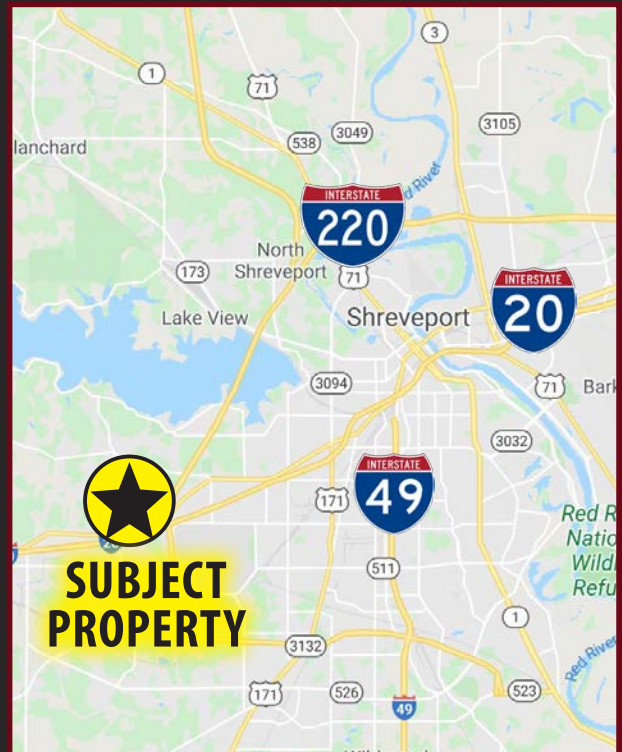


2.33 ACRES

FOR SALE

4347 PINES ROAD, SHREVEPORT, LA 71119

- Great visibility
- 654 feet of frontage off Pines Road
- Zoned: R-E
- Traffic Count: 17,623 vehicles per day
- Easy access to I-20
- Home Depot, Walmart Supercenter, and National Restaurant concepts all within minutes from the location
- Sale Price: \$229,000



For more information, contact:

G. Archer Frierson III, CCIM, SIOR | 318.222.2244 | gfrierson@vintagerealty.com

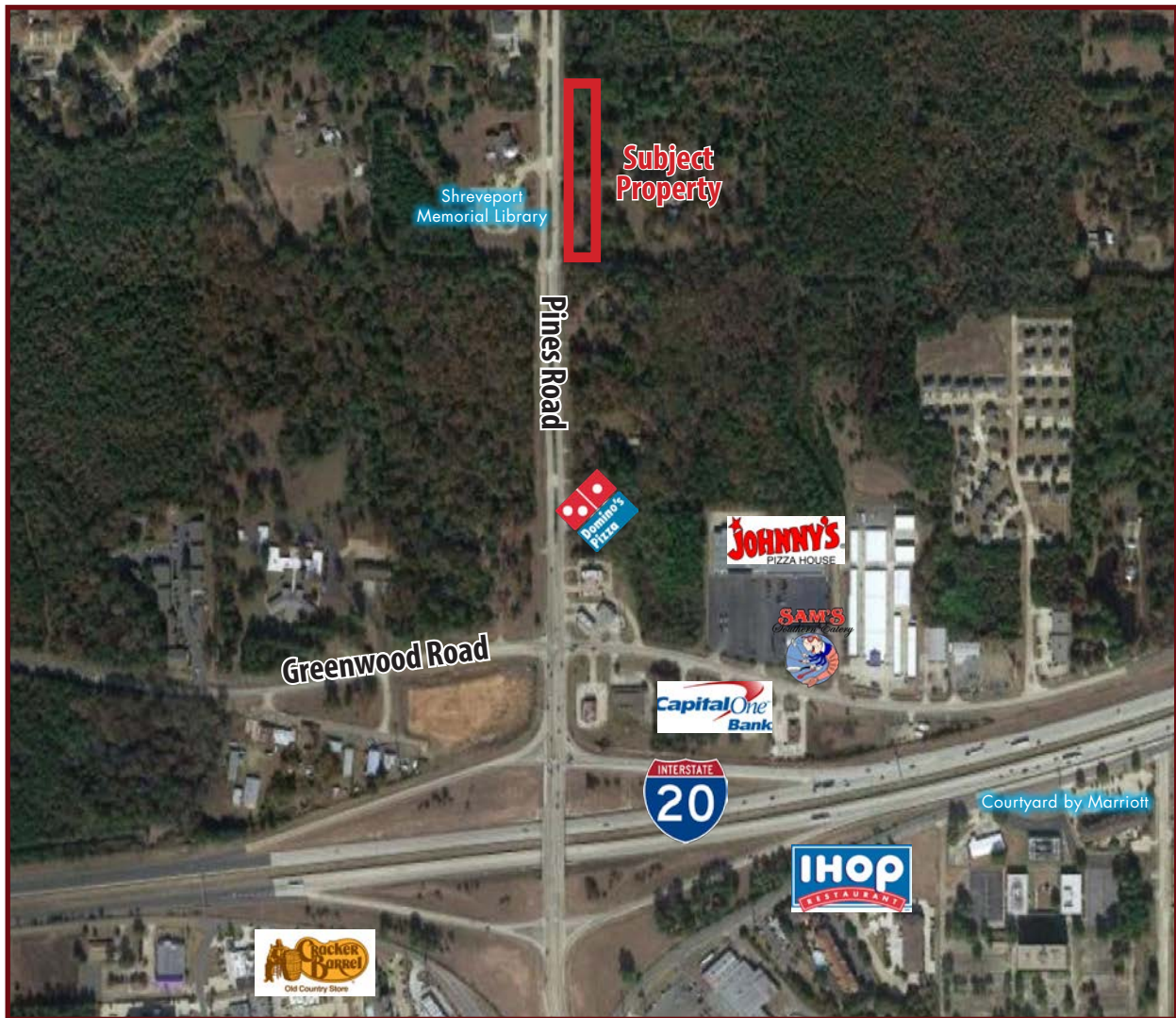
Patick Harrington | 318.222.2244 | pharrington@vintagerealty.com



ALL INFORMATION CONTAINED HEREIN IS BELIEVED TO BE ACCURATE, BUT IS NOT WARRANTED AND NO LIABILITY OF ERRORS OR OMISSIONS IS ASSURED BY EITHER THE PROPERTY OWNER OR VINTAGE REALTY COMPANY OR ITS AGENTS AND EMPLOYEES. PRICES AS STATED HEREIN AND PRODUCT AVAILABILITY IS SUBJECT TO CHANGE AND/OR SALE OR LEASE WITHOUT PRIOR NOTICE, AND ALL SIZES AND DIMENSIONS ARE SUBJECT TO CORRECTION. REV 6/2020

2.33 ACRES FOR SALE

4347 PINES ROAD
SHREVEPORT, LA 71119



For information, please contact:

G. Archer Frierson III, CCIM, SIOR | 318-222-2244 | gfrierson@vintagerealty.com

Patrick Harrington | 318-222-2244 | pharrington@vintagerealty.com

ALL INFORMATION CONTAINED HEREIN IS BELIEVED TO BE ACCURATE, BUT IS NOT WARRANTED AND NO LIABILITY OF ERRORS OR OMISSIONS IS ASSURED BY EITHER THE PROPERTY OWNER OR VINTAGE REALTY COMPANY OR ITS AGENTS AND EMPLOYEES. PRICES AS STATED HEREIN AND PRODUCT AVAILABILITY IS SUBJECT TO CHANGE AND/OR SALE OR LEASE WITHOUT PRIOR NOTICE, AND ALL SIZES AND DIMENSIONS ARE SUBJECT TO CORRECTION. 6/2020