



STATS

- POPULATION 34,396
- CITY EMPLOYEES 380
- ACRES OF PUBLIC SPACES 565
- OVER 350 CITY EVENTS A YEAR
- LOCATED IN JOHNSON COUNTY
- MEDIAN INCOME \$51,475
- HOME TO LAKE PAT CLEBURNE

LOCATION: CLEBURNE TEXAS

Cleburne, the county seat of Johnson County is located just 30 miles South of Fort Worth. It is a fast-growing city with a small town feel, with big city access. Nearly 35,000 people now call Cleburne home.

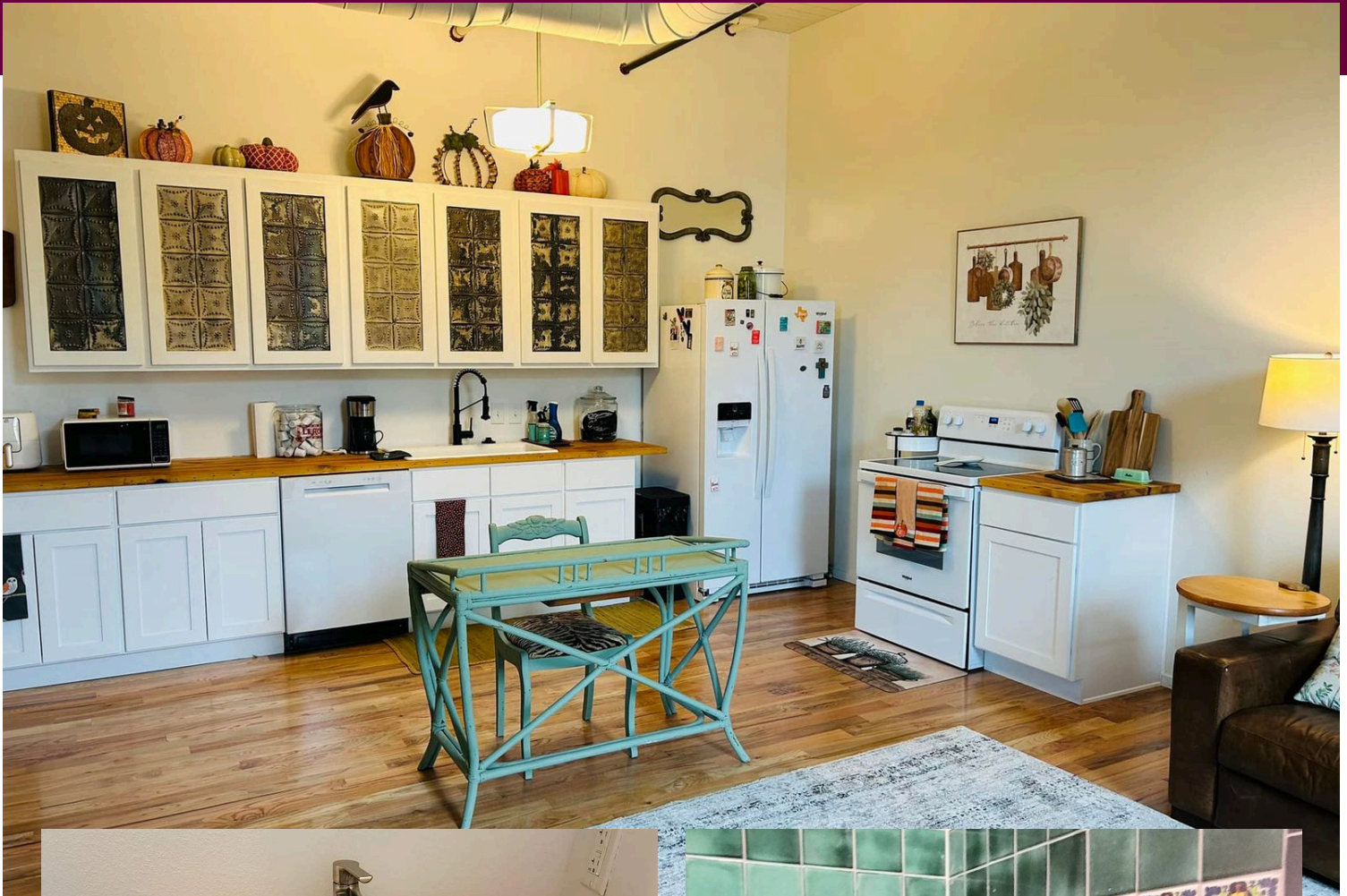
Historic Downtown Cleburne offers all the joys of Southern living: delicious food, warm hospitality and lots of community events. Step back into time in one of the many bustling cafés, art galleries, boutiques and antique stores.

THE DICKSON —HARDWARE— BUILDING



PROPERTY HIGHLIGHTS

- Located in Historic Downtown Cleburne
- Built in 1900
- Total size: 20,000SF
- Historic 3 story building
- Ground floor retail space for lease
- 500 gallon grease trap
- 14 space parking lot attached and included



Jennifer Franke
 Licensed Real Estate Salesperson
 817-808-0179
 jenfrankerealestate@gmail.com
 www.berkshirehathawayhs.com/

**BERKSHIRE
 HATHAWAY**
 HOMESERVICES
 PREMIER PROPERTIES

Berkshire Hathaway HomeServices Premier Properties
 2900 S. Hulen Street Suite 10 Fort Worth, TX 76109

©2025 BHH Affiliates, LLC. Real Estate Brokerage Services are offered through the network member franchisees of BHH Affiliates, LLC. Most franchisees are independently owned and operated. Berkshire Hathaway HomeServices and the Berkshire Hathaway HomeServices symbol are registered service marks of Columbia Insurance Company, a Berkshire Hathaway affiliate. Information not verified or guaranteed. If your property is currently listed with a Broker, this is not intended as a solicitation. Equal Housing Opportunity. 