

EXECUTIVE SUITES



FOR LEASE

1122-1130 EAST GREEN STREET, PASADENA, CA 91106

Property Description

Prime Pasadena executive suites office, built in 1988, is conveniently located on the beautiful Green Street just east of Lake Avenue's Central Business District. Close to all amenities and a very convenient location with large surface parking lot in rear plus street parking.

Building Highlights

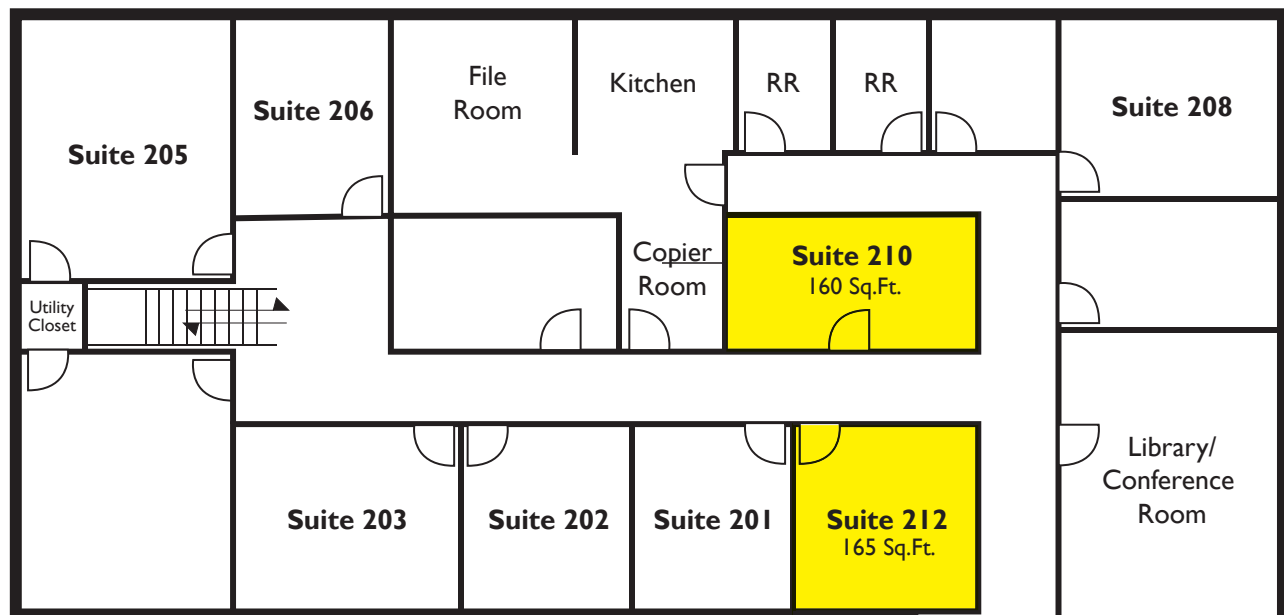
- Full time receptionist (Monday to Friday, 8:30am to 5:30pm)
- Conference rooms and outdoor court yard
- Photocopier - full color available
- Mail and package handling
- Free parking
- Building fully secured
- Access to the building after hours
- Kitchen services, free coffee and supplies



For More Information:
Charles Brown
(213) 622-4442, ext 223
C.BROWN@MORLINMGMT.COM

Jimmy Kam
(213) 622-4442, ext 224
J.KAM@MORLINMGMT.COM





FLOOR PLAN

1122 E Green Street, Second FL

*Not To Scale.



1130 E Green Street, Second FL

