

MISSION GROVE OFFICE PARK

FOR LEASE

1545 & 1565
Hotel Circle South
San Diego, CA 92108



McKeeCommercialRealEstate.com

Keith Herbert

Director

KHerbert@mckeecompany.com

619.642.2711 x205

CalDRE #01892190

James Shelton

VP, Leasing & Sales

jshelton@mckeecompany.com

619.642.2711 x222

CalDRE #02091906

MISSION GROVE OFFICE PARK



65,649 SF Professional Office Park

Mission Grove Office Park is comprised of two wood sided office buildings located in the highly desirable Mission Valley sub-market of San Diego, CA. Matured trees and greenery provides the perfect environment for doctors, health practices, therapists, attorney's, and other professionals seeking a soothing environment and central San Diego Location.



Peaceful treed park-like setting



Central San Diego location, w/ convenient freeway access



Signage opportunities, visibility to I-8 Freeway



Assigned covered parking available, free guest parking



Elevator served w/ direct access to parking garage



Competitive lease rates, NO triple net expenses.



McKeeCommercialRealEstate.com

Keith Herbert

Director

KHerbert@mckeecompany.com

619.642.2711 x205

CalDRE #01892190

James Shelton

VP, Leasing & Sales

jshelton@mckeecompany.com

619.642.2711 x222

CalDRE #02091906

Market Overview

Mission Valley, San Diego, CA

Central San Diego Location



513,435
Population



38.5
Median Age



223,536
Households



\$736,169
Median Home Value



\$104,939
Household Income
*Source: costar.com

Mission Valley & Old Town

Just minutes away from the San Diego International Airport and within easy reach of all that San Diego has to offer, Mission Valley and Old Town are a great place to call home base.

Conveniently Located

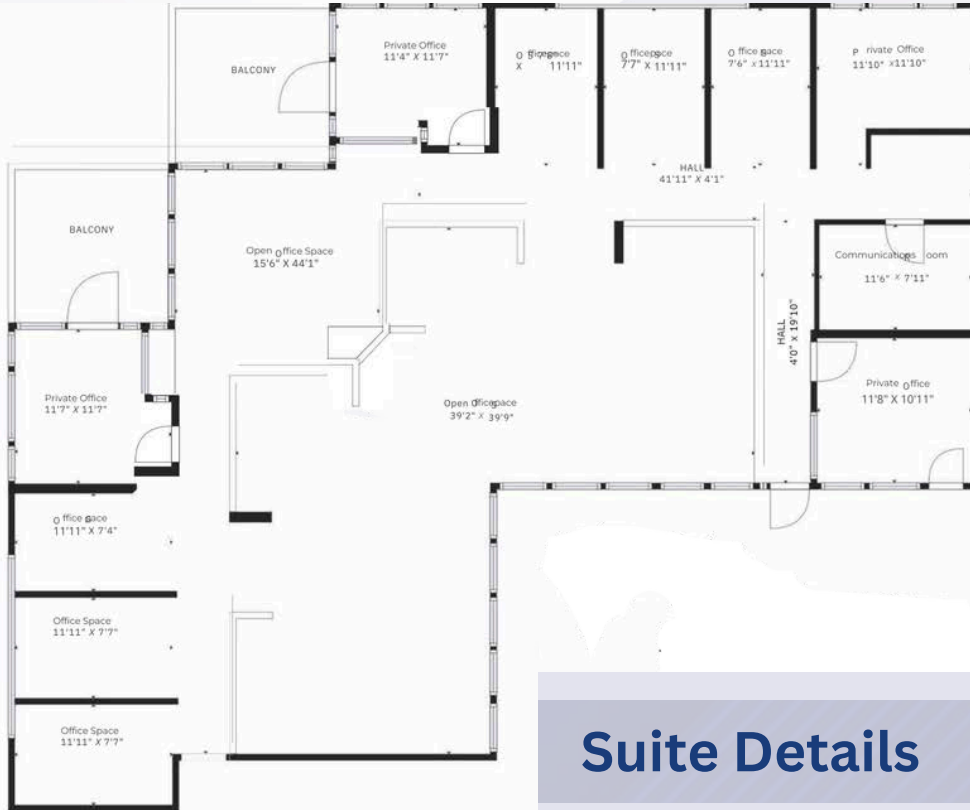
At the center of San Diego County, this area is within a 10-minute drive of the San Diego Zoo, SeaWorld San Diego and the Downtown Gaslamp District. Family-friendly dining options and great shopping is available at both the Fashion Valley and Mission Valley malls.

Accommodations & Attractions

Outdoor enthusiasts can play 18 holes at the Riverwalk Golf Club in Mission Valley or go hiking and rock climbing in Mission Trails Regional Park. Cultural attractions in the area include the Mission San Diego de Alcala,

Suite 1545-210

3,310 RSF



Suite Details

- 6+ Offices
- Reception
- Conference room

Location: 1545 Building, 2nd Floor,
West & North Facing Windows

[Virtual Tour](#)



McKeeCommercialRealEstate.com

Keith Herbert

Director

KHerbert@mckeecompany.com

619.642.2711 x205

CalDRE #01892190

James Shelton

VP, Leasing & Sales

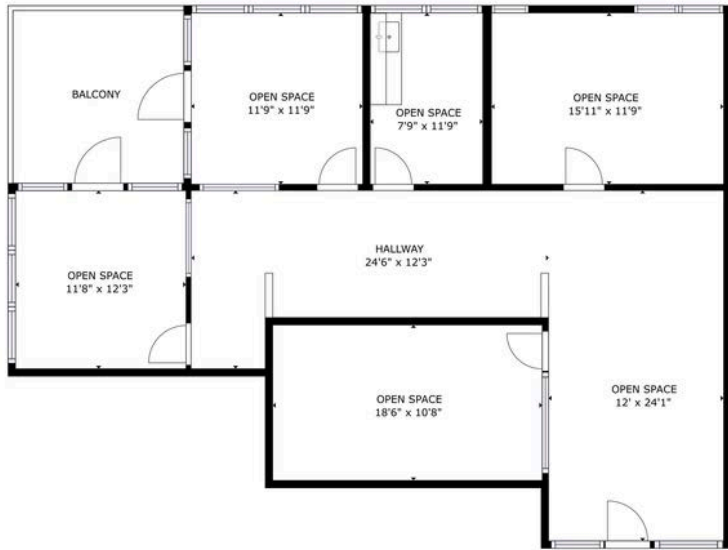
jshelton@mckeecompany.com

619.642.2711 x222

CalDRE #02091906

Suite 1545-240

3,310 RSF



Suite Details

- 3 Private Offices
- Reception Area
- Open Workspace
- Kitchenette]
- 2 Balconies

Location: 1545
Building, 2nd Floor

[Virtual Tour](#)



McKeeCommercialRealEstate.com

Keith Herbert

Director

KHerbert@mckeecompany.com

619.642.2711 x205

CalDRE #01892190

James Shelton

VP, Leasing & Sales

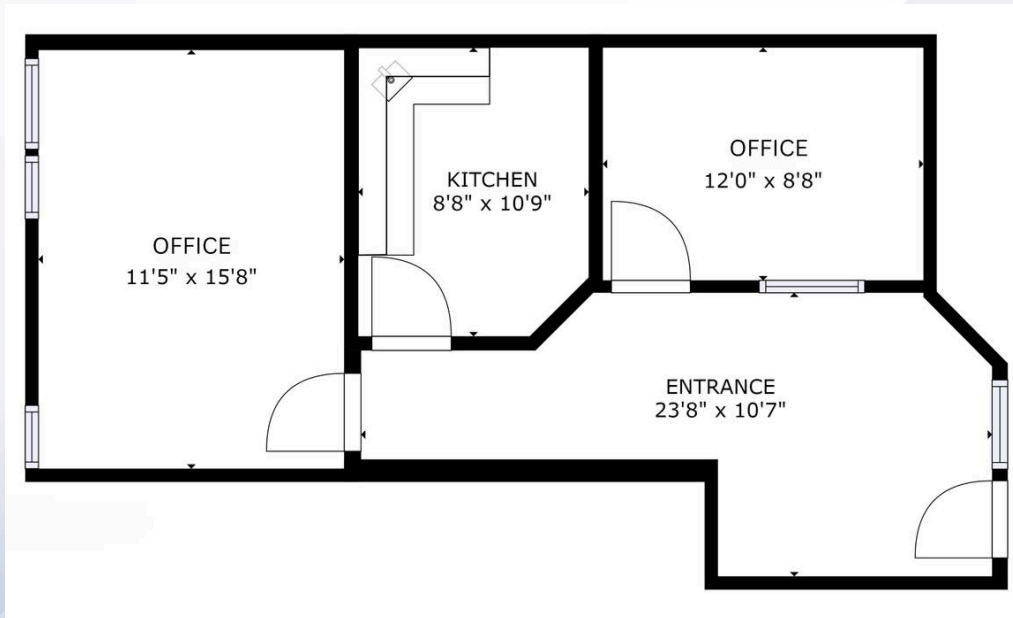
jshelton@mckeecompany.com

619.642.2711 x222

CalDRE #02091906

Suite 1545-275

641 RSF



Suite Details

- 2 Offices
- Reception
- Kitchenette

Location: 1545 Building, 2nd Floor,
East Facing Windows

[Virtual Tour](#)



McKeeCommercialRealEstate.com

Keith Herbert

Director

KHerbert@mckeecompany.com

619.642.2711 x205

CalDRE #01892190

James Shelton

VP, Leasing & Sales

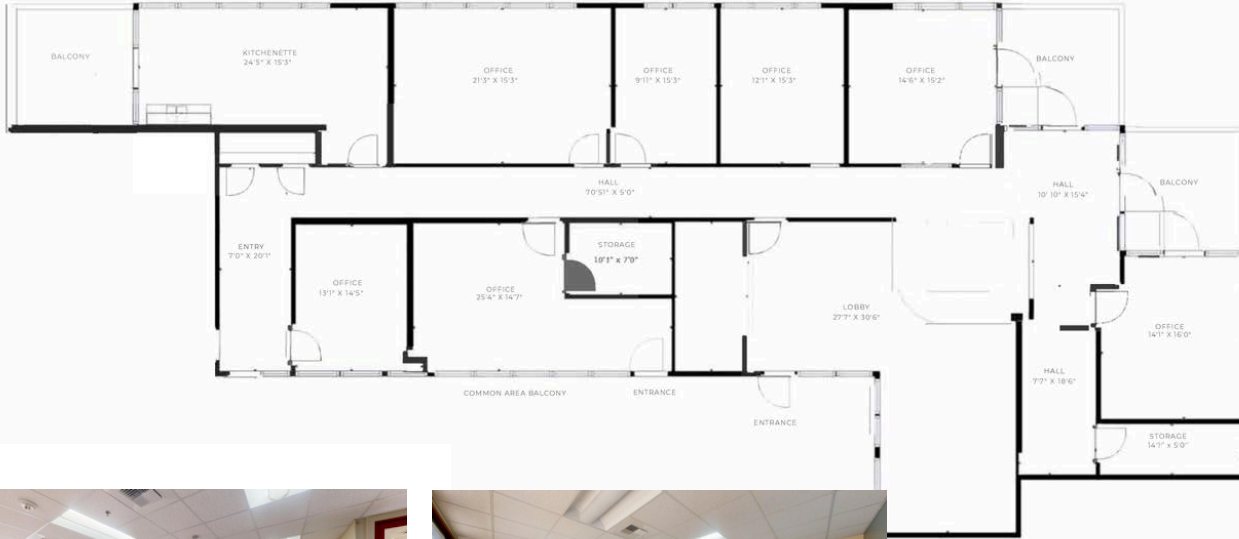
jshelton@mckeecompany.com

619.642.2711 x222

CalDRE #02091906

Suite 1545-302

4,232 RSF



Suite Details

- 7 Offices
- Reception
- Kitchenette
- Open Workspace
- Server Room
- 3 Private Balconies

Location: 1545 Building, 2nd Floor, North Facing Windows

[Virtual Tour](#)



McKeeCommercialRealEstate.com

Keith Herbert

Director

KHerbert@mckeecompany.com

619.642.2711 x205

CalDRE #01892190

James Shelton

VP, Leasing & Sales

jshelton@mckeecompany.com

619.642.2711 x222

CalDRE #02091906

Suite 1565 300/320

4,131 RSF

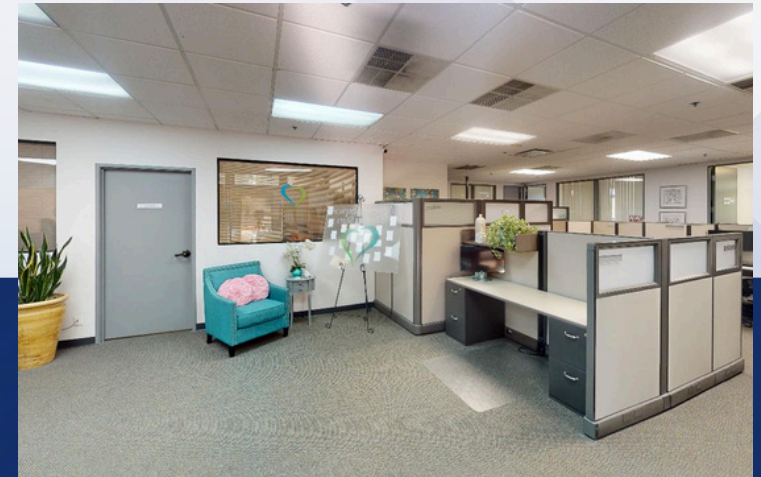


Suite Details

- Large Open Office Space
- 12 Private Offices
- Reception and Lobby Area
- Kitchen
- 2 Private Balconies
- 2 Storage Rooms

Location: 1565 Building, 3rd Floor,
West & South Facing Windows

[Virtual Tour](#)



McKeeCommercialRealEstate.com

Keith Herbert

Director

KHerbert@mckeecompany.com

619.642.2711 x205

CalDRE #01892190

James Shelton

VP, Leasing & Sales

jshelton@mckeecompany.com

619.642.2711 x222

CalDRE #02091906

MISSION GROVE OFFICE PARK



1545 & 1565 Hotel Circle South
San Diego, CA 92108



Keith Herbert
Director
KHerbert@mckeecompany.com
619.642.2711 x205
CalDRE #01892190



James Shelton
VP, Leasing & Sales
jshelton@mckeecompany.com
619.642.2711 x222
CalDRE #02091906

[Virtual Tour](#)

Disclaimer:

This notice is provided to all Brokers/Agents, and or any party interested in the property, or other suite vacancies in connection with the Broker/Agent below. The information contained herein has been obtained from sources believed to be reliable. Keith Herbert and James Shelton (Broker/Agent) makes no guaranties or warranties as to the accuracy thereof. The presentation of the property is submitted subject to the possibility of errors, omissions, change of price, pending/ prior sale, or other conditions, lease or financing, or withdrawal without notice. Information is provided for courtesy/guidance only and does not constitute all or any part of a contract. Brokers/agents, and or any party interested should review local building codes, ordinances, and other applicable laws to determine their effect on the property. Selection of experts, inspectors, and repairmen is the responsibility of Brokers/Agent, and or any party interested.