

Perfect-Sized Suite in Busy Longmont Retail Center

900 COFFMAN STREET | LONGMONT, CO

SUITE B

Size: 1,250 SF

Rate: \$22 NNN (\$9.80)

Available: Immediately

Ma Mead's
PIZZERIA

PIZZA

CALZONES

WINGS

BITE SIZE BLISS

Introducing the latest lease opportunity in central Longmont: a turnkey restaurant in a popular neighborhood retail center! Perfectly nestled in central Longmont, 900 Coffman pulls in patrons from every direction while keeping a friendly eye on downtown's ever-growing buzz. This bite-sized space is now available and includes a hood, walk-in cooler, prep sinks and more. You'll be in good company, with Your Butcher Frank (an undisputed Longmont Institution) and the popular Brickscape Cafe as your neighbors. Snag this spot and become the next local legend.

PROPERTY HIGHLIGHTS

- 2nd Generation kitchen including hood, grease interceptor, walk-in cooler, and prep tables
- Neighborhood retail center with iconic excellent retail mix, including Your Butcher Frank and Brickscape Cafe
- Located in central Longmont with proximity to downtown
- Parking in front of store & 1 public restroom



[CLICK HERE](#)
for virtual tour

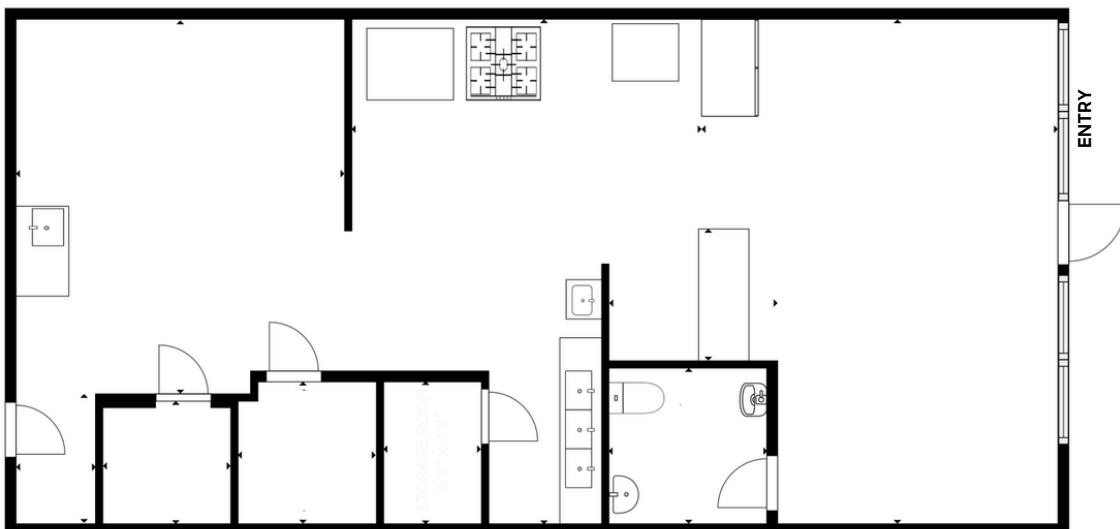


LEARN MORE ABOUT THIS PROPERTY
MarketRealEstate.com

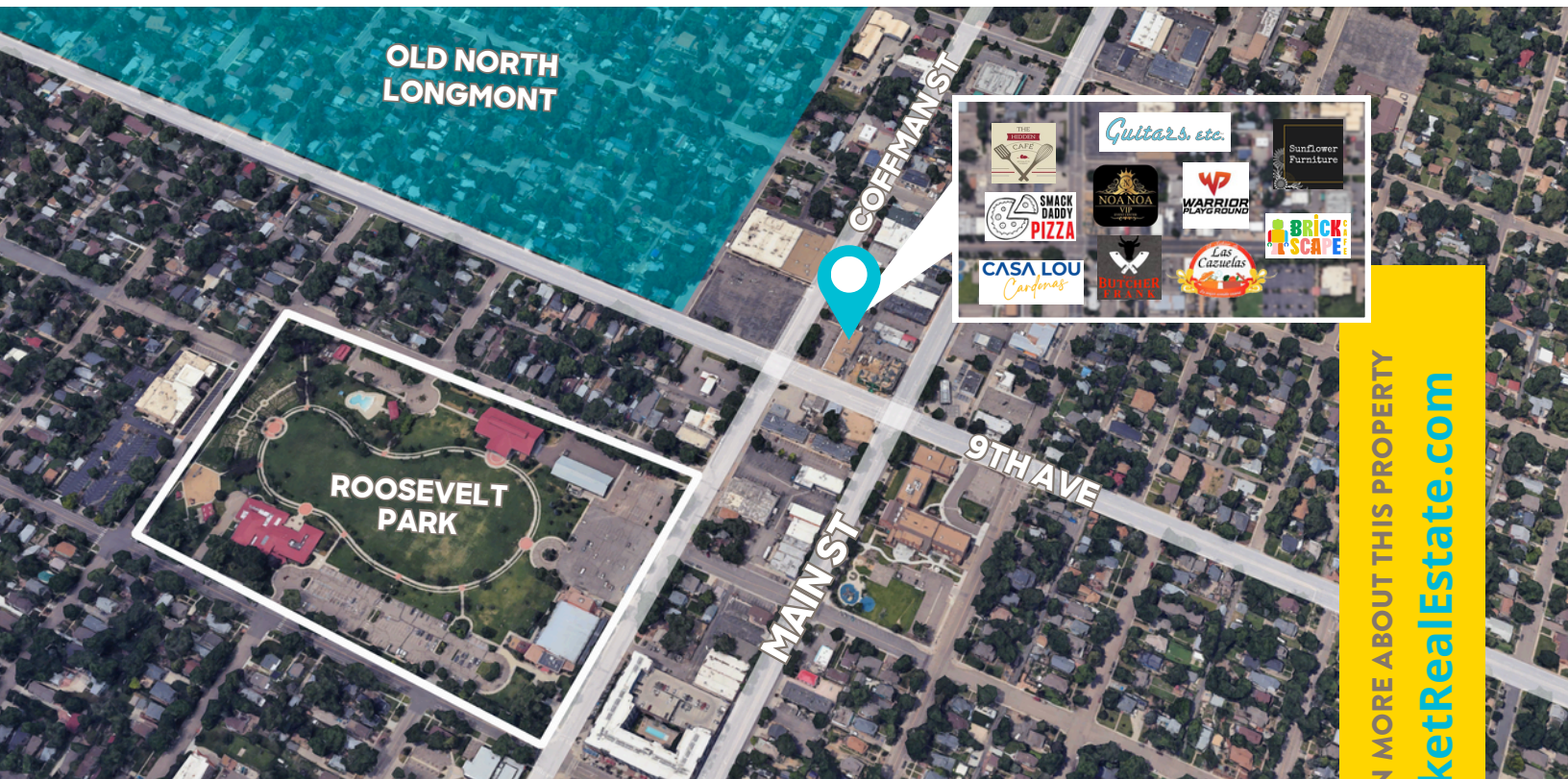


market

REAL ESTATE



CLICK HERE
for virtual tour



ANNIE LARNER

303 444 1344

Annie@MarketRealEstate.com

NATE LITSEY

303 444 4024

Nate@MarketRealEstate.com

LEARN MORE ABOUT THIS PROPERTY

MarketRealEstate.com

