



2395 Jolly Rd

Okemos, Michigan 48864

Property Highlights

- Located on Jolly Rd just west of Okemos Rd
- Easy access to I-96
- Restaurants', shopping, hotels and banks close by
- 2,796 SF available with great visibility on Jolly Road
- Potential medical space

Offering Summary

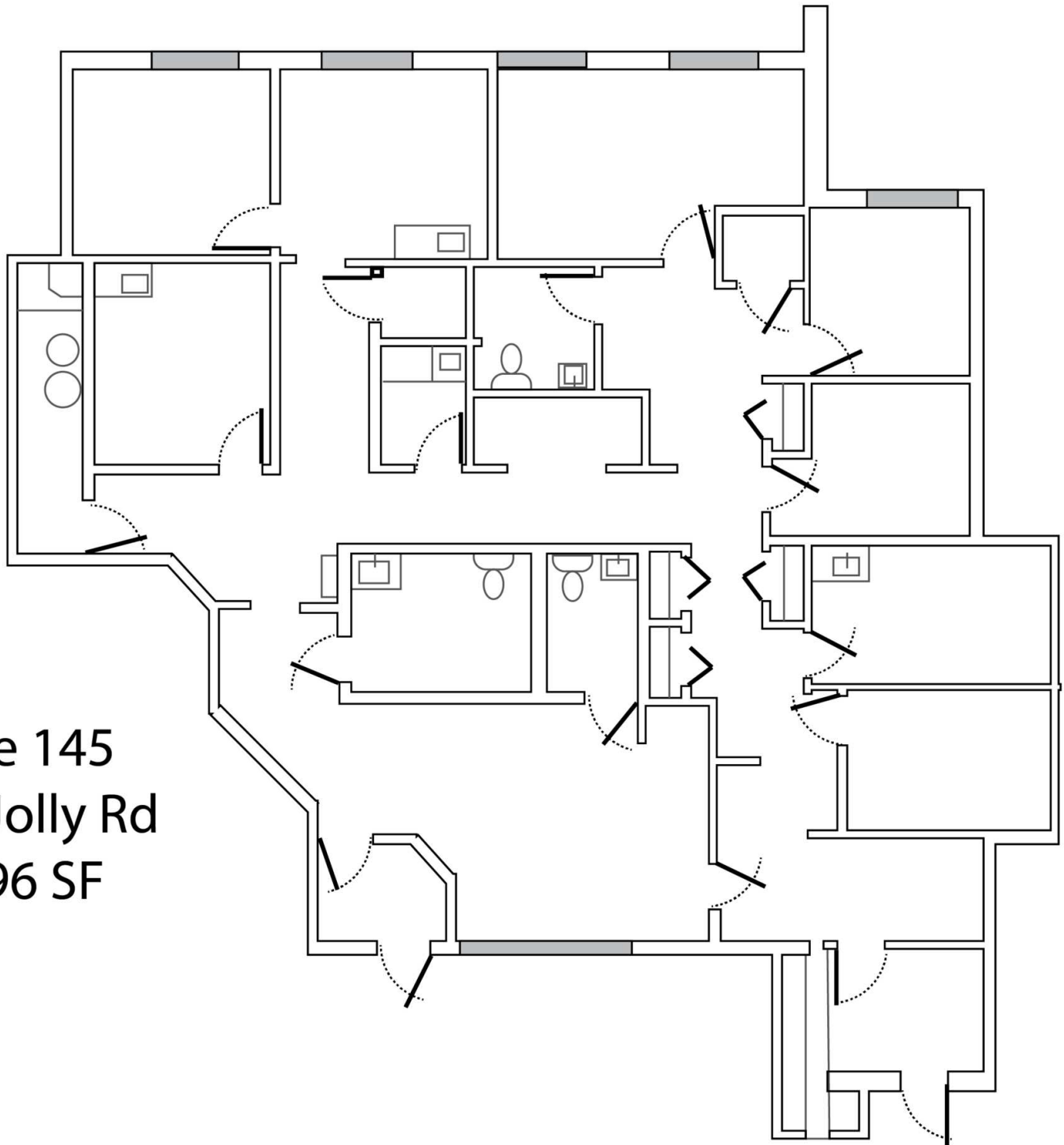
Lease Rate:	\$15.00 SF/yr (MG)
Building Size:	27,240 SF
Available SF:	2,796 SF
Lot Size:	127,432 SF

Spaces	Lease Rate	Space Size
Suite 145	\$15.00 SF/yr	2,796 SF

For More Information

Steve Slater

O: 517 487 9222 | C: 517 749 7914
 steveslater@naimidmichigan.com

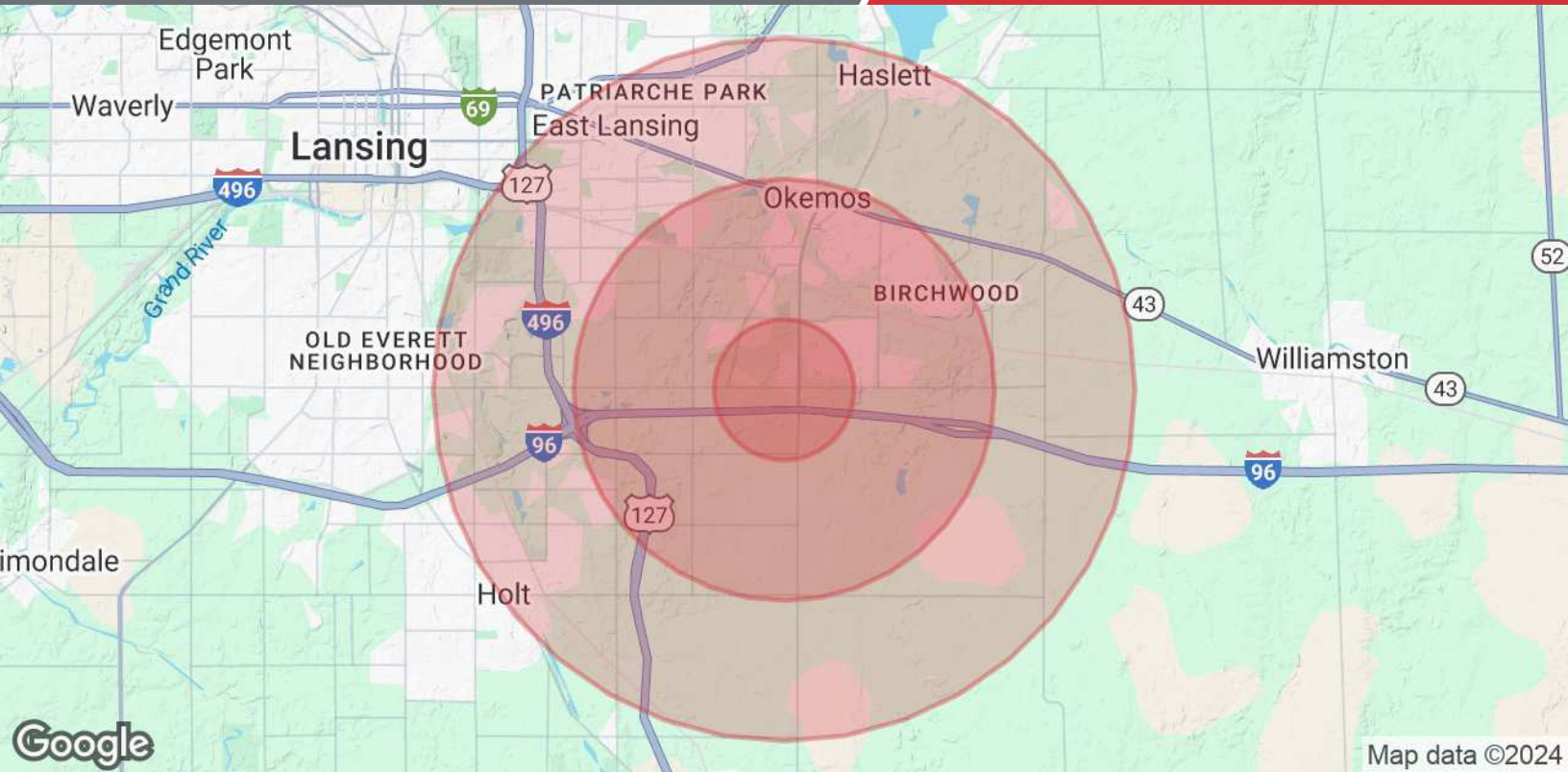


Suite 145
2395 Jolly Rd
2,796 SF



NO WARRANTY OR REPRESENTATION, EXPRESS OR IMPLIED, IS MADE AS TO THE ACCURACY OF THE INFORMATION CONTAINED HEREIN, AND THE SAME IS SUBMITTED SUBJECT TO ERRORS, OMISSIONS, CHANGE OF PRICE, RENTAL OR OTHER CONDITIONS, PRIOR SALE, LEASE OR FINANCING, OR WITHDRAWAL WITHOUT NOTICE, AND OF ANY SPECIAL LISTING CONDITIONS IMPOSED BY OUR PRINCIPALS. NO WARRANTIES OR REPRESENTATIONS ARE MADE AS TO THE CONDITION OF THE PROPERTY OR ANY HAZARDS CONTAINED THEREIN ARE INTENDED TO BE IMPLIED.

2149 Jolly Road, Suite 200
Okemos, MI 48864
517 487 9222 tel
naimidmichigan.com



Population

	1 Mile	3 Miles	5 Miles
Total Population	4,754	22,827	94,897
Average Age	38	39	34
Average Age (Male)	38	38	34
Average Age (Female)	38	40	35

Households & Income

	1 Mile	3 Miles	5 Miles
Total Households	1,839	9,093	35,037
# of Persons per HH	2.6	2.5	2.7
Average HH Income	\$132,557	\$131,321	\$94,029
Average House Value	\$404,201	\$367,363	\$252,452

Demographics data derived from AlphaMap