

FOR SALE OR LEASE: MONTAVILLA RETAIL BUILDING AT 8028 SE STARK



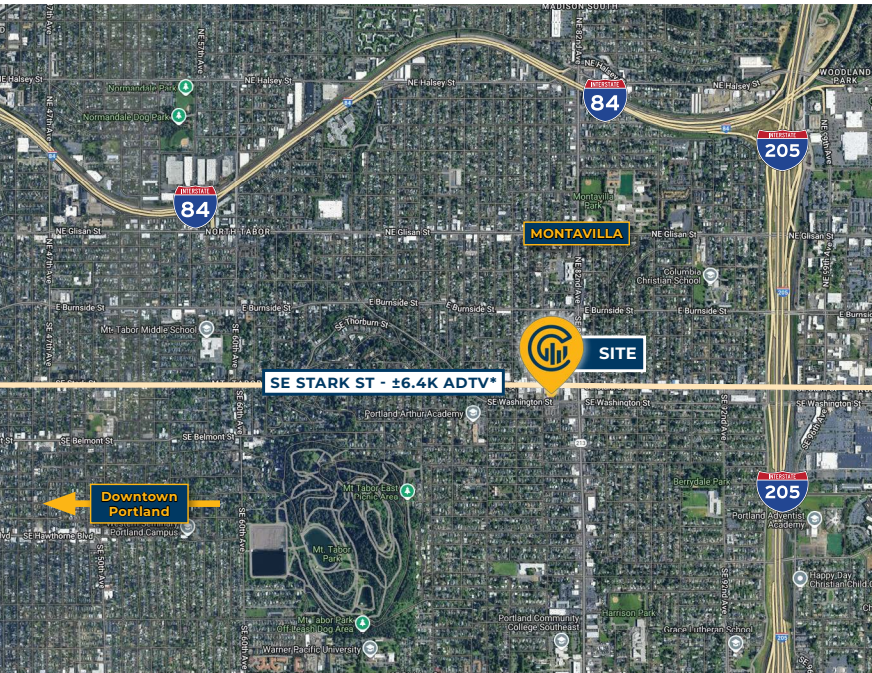
OFFERING SUMMARY

Capacity Commercial Group is pleased to exclusively present for sale 8028 SE Stark Street in the heart of SE Portland Oregon's Montavilla Neighborhood.

The site benefits from flexible mixed-use zoning (CM2) which allows for retail, light industrial, multifamily, office and more.

The 5,000 square foot retail building at 8028 SE Stark has the ability to be completely open with one row of columns and has multiple walls and rooms in its current configuration that may be utilized for retail or office purposes.

The ability to add several stories of multifamily housing above the existing structure allows for future redevelopment while the current building is perfect for adaptive reuse to utilize the high foot traffic SE Stark Street in Montavilla. The area is served by mass transit, has free street parking, and is close to Highway 213 (82ND Avenue) and I-205.



*Average Daily Traffic Volume | Traffic Counts Provided by REGIS Online at SitesUSA.com ©2025
Map data ©2025 Google Imagery ©2025, Airbus, CNES / Airbus, Maxar Technologies, Metro, Portland Oregon, Public Laboratory, State of Oregon, U.S. Geological Survey, USDA/FPAC/GEO

Property Overview

Address	8028 SE Stark St, Portland, OR 97215
Asset Type	Retail Building
Property Zoning	Commercial Mixed Use 2 (CM2)
Sale Price	\$1,100,000
Lease Rate	Call Broker for Lease Rate
Building Size	5,000 SF
Parcel ID	R332498
Use Type	Former Spa, Retail Storefront Can be used for Dispensary



88

Walk Score®
"Very Walkable"



93

Bike Score®
"Biker's Paradise"



53

Transit Score®
"Good Transit"

Ratings provided by <https://www.walkscore.com>

For more information, contact:



Jason VanAbrams
Sr. Associate Broker | Licensed in OR
503-467-0935
jason@capacitycommercial.com

Capacity Commercial Group | 805 SW Broadway, Suite 600, Portland, OR | capacitycommercial.com