



OFFICE SPACE FOR LEASE

6

ANTARES DR

PHASE I — SUITE 200 OTTAWA, ONTARIO



INSIDE EDGE
PROPERTIES
BROKERAGE

FOR INQUIRIES, PLEASE CONTACT:
LEASING@IEPROPERTIES.COM

613.226.9902



6 ANTARES DR, PHASE I – SUITE 200

4,480 SQ.FT.
OFFICE SPACE FOR LEASE

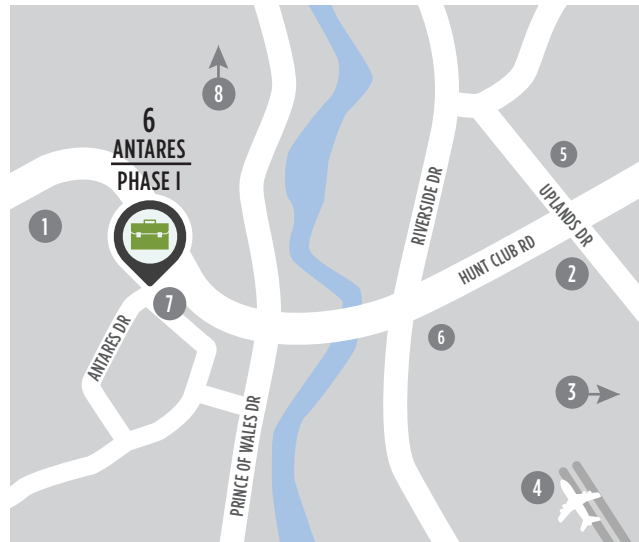
BASIC RENT	\$14.00 PSF
ADDITIONAL RENT	\$16.37 PSF (2022 ESTIMATE)
ADDITIONAL COSTS	UTILITIES & IN-SUITE JANITORIAL
AVAILABILITY	IMMEDIATELY
PARKING	3/1000



WELL-LOCATED, MODERN OFFICE SPACE

6 Antares Drive is situated in an amenity-rich location just steps from public transportation and minutes from a variety of shops, restaurants and the Ottawa International Airport. Conveniently located at the corner of Hunt Club Road and Antares Drive, this highly visible building also offers superior signage opportunities in the well-established Rideau Heights Business Park.

LOCATION



POINTS OF INTEREST

- 1 Restaurants, Retail, Hotel
- 2 Event Space - Infinity Convention Centre
- 3 Event Space - EY Centre
- 4 Ottawa International Airport
- 5 Ottawa Hunt and Golf Club
- 6 Restaurants and Retail
- 7 OC Transpo Bus Stop
- 8 Downtown Ottawa (20 min drive)



FOR INQUIRIES, PLEASE CONTACT:
LEASING@IEPROPERTIES.COM
613.226.9902

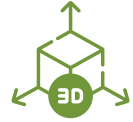


INSIDE EDGE
PROPERTIES
BROKERAGE

6 ANTARES DR, PHASE I – SUITE 200

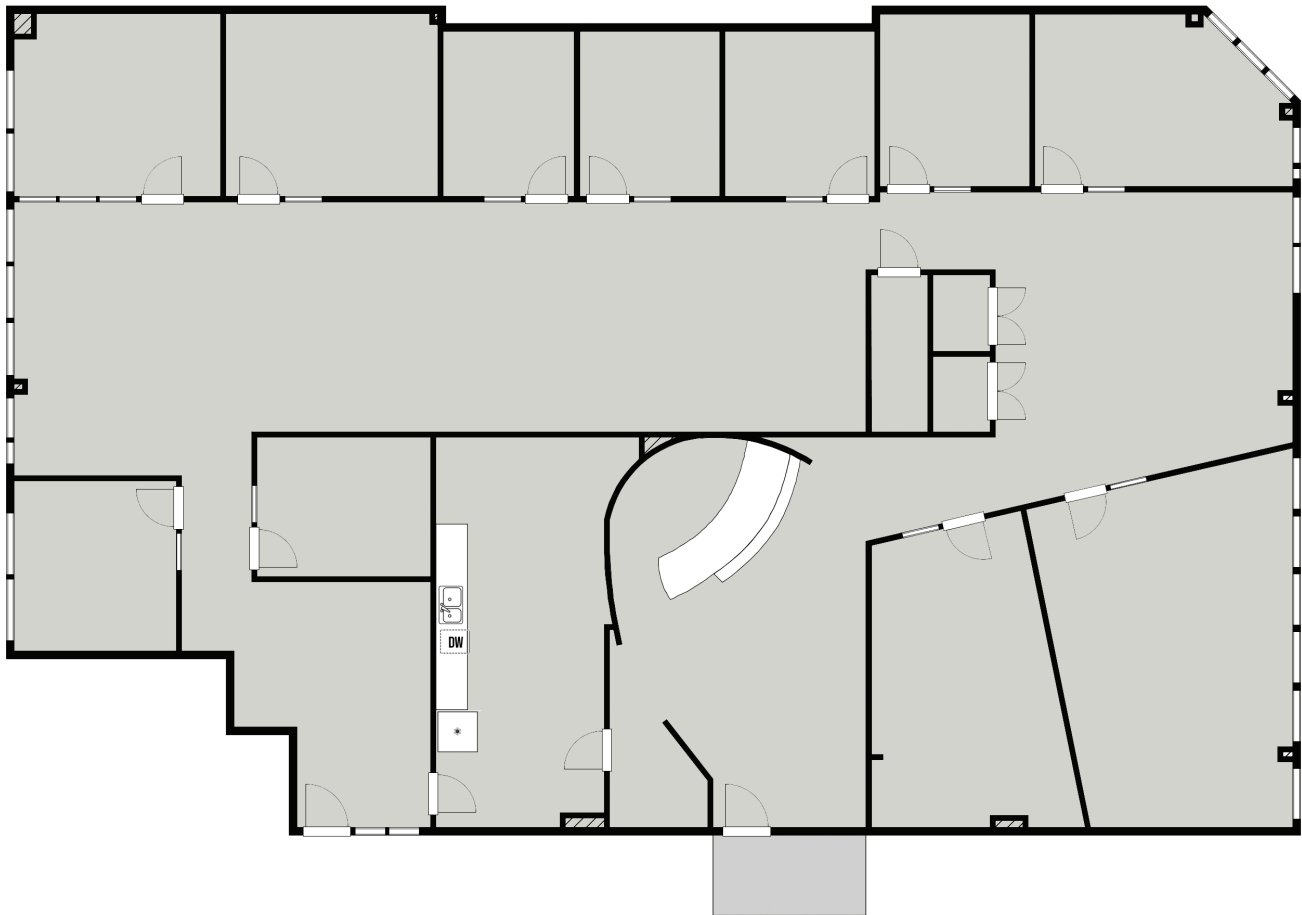


FLOORPLAN




[CLICK TO VIEW VR TOUR](#)

SUITE 200 | AVAILABILITY: IMMEDIATELY
4,480 SQ. FT.



FOR INQUIRIES, PLEASE CONTACT:
LEASING@IEPROPERTIES.COM
613.226.9902



INSIDE EDGE
PROPERTIES
BROKERAGE

6 ANTARES DR, PHASE I - SUITE 200



FOR INQUIRIES, PLEASE CONTACT:
LEASING@IEPROPERTIES.COM
613.226.9902



INSIDE EDGE
PROPERTIES
BROKERAGE

6 ANTARES DR, PHASE I – SUITE 200



NEARBY AMENITIES



FOR INQUIRIES, PLEASE CONTACT:
LEASING@IEPROPERTIES.COM
613.226.9902