

FOR LEASE \$29/SF +NNN



WATCH VIDEO



FOR LEASE – 2,900 RSF OF MODERN, VERSATILE SPACE

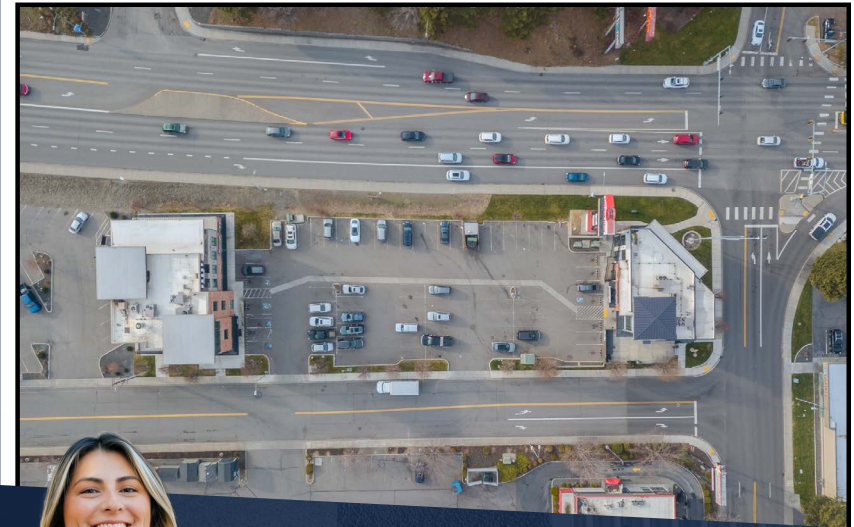
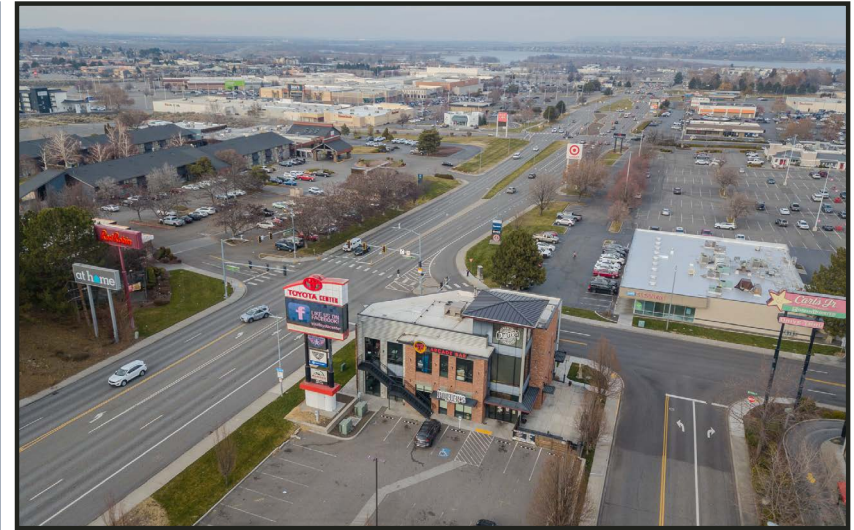
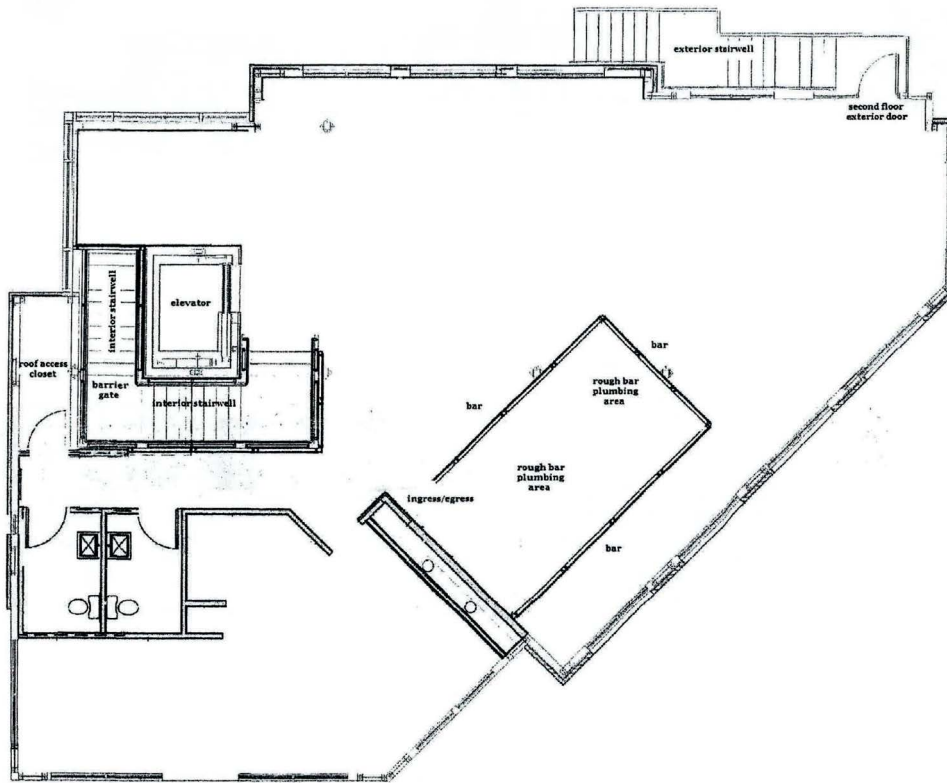
Located on N Columbia Center Blvd, this 2,900 SF second-floor space offers unbeatable exposure and accessibility in one of Kennewick's most high-traffic commercial corridors. Positioned near W Okanogan Pl, the space features an open layout, currently configured as a bar, but adaptable for creative studios, professional offices, boutique retail, or service-based businesses. High-end finishes, abundant natural light, and an elevator for easy access make this a standout opportunity. With strong visibility, proximity to major shopping, dining, and entertainment, and NNN lease terms, this location is primed for success. Seeking a 5-year lease term. **MLS#281846**

- 2,900 RSF of Versatile Open Space
- Sleek, Contemporary Design
- Wide-Open Concept
- Ideal for Professional or Creative Users
- Prime Location

FOR LEASE \$29/SF +NNN

1022 N COLUMBIA CENTER BLVD SUITE 210 | KENNEWICK, WA.

FLOORPLAN



DERRICK STRICKER
DESIGNATED BROKER



derrick@strickercre.com
509.591.9949



JAZMINE MURILLO
COMMERCIAL BROKER



jazmine@strickercre.com
509.591.9949

