

# OFFERING MEMORANDUM

— FOR LEASE —

## NEWER VINTAGE RIGHT-SIZED CONTRACTOR GARAGES

MEDFORD, OREGON

(541) 608-6704 | [www.Merit-Commercial.com](http://www.Merit-Commercial.com) | [team@merit-commercial.com](mailto:team@merit-commercial.com)

**Scott King**  
Principal Broker



**Caspian Hoehne**  
Licensed Broker





# CONTENTS

**3** EXECUTIVE SUMMARY & HIGHLIGHTS

**4** OFFERING DETAILS & PHOTOS

**13** MARKET OVERVIEW

**16** TRANSACTION GUIDELINES

EXCLUSIVELY REPRESENTED BY  
**MERIT COMMERCIAL REAL ESTATE**  
VIEW MORE AT: [MERIT-COMMERCIAL.COM](http://MERIT-COMMERCIAL.COM)

**SCOTT KING**  
Principal Broker / Owner  
(541) 890-6708  
[scotttning@gmail.com](mailto:scotttning@gmail.com)

**CASPIAN HOEHNE**  
Licensed Broker  
(541) 944-9967  
[caspiant@merit-commercial.com](mailto:caspiant@merit-commercial.com)

This offering memorandum is intended for only the party receiving it from Merit Commercial Real Estate ("MCRE"), and should not be made available to any other reviewing entity without the prior written consent of MCRE. All information included in this offering memorandum has been obtained from sources deemed reliable, however, Owner, MCRE, and/or their representatives make no representations or warranties, expressed or implied, as to the accuracy of the information, and makes no warranty or representation into the exact state of the property, the presence of contaminating substances, PCB's or asbestos, the property or owner's compliance with State and Federal regulations, or the physical condition of any improvements on the property. The recipient of this document must independently verify the information and assumes any and all risk for inaccuracies contained herein. The information contained in this offering memorandum is not a substitute for a thorough due diligence investigation.

# Executive Summary

Merit Commercial Real Estate is pleased to exclusively present for lease **2074 Commerce Drive, Suite 102 and Suite 103**, two flexible and attainable industrial suites for lease in Medford, Oregon (the "Spaces").

The Spaces encompass a combined 2,070 square feet ("SF") across two adjacent suites (currently divided with an interior wall).

As one of the only new developments including smallbay warehouse space, the property is perfectly located within the city limits of Medford, and within a 2 minute drive to Lowe's and Walmart.

Prospective tenants may lease one or both suites; interior wall has been designed to add a roll-up to allow easy access between the suites, if needed.

The nearly brand-new construction industrial studios are immediately available for occupancy. Both suites present a great opportunity to step into a pristine space, conveniently located just off of Highway 62 as well as being ±2 minutes to Lowe's and Walmart. The Spaces are also close to the Rogue Valley International Airport.

Both suites are to be delivered in "warm-shell" condition and include a small bathroom, large warehouse space, (1) 10'x14' roll-up door, and (1) walk-in door. The Spaces are also supplied with 200 amps of 3-phase power.

Outside, there is full perimeter fencing with a shared gated driveway off of Commerce Drive and designated parking spaces.

Each space includes 3 marked, paved parking spaces, and tenants may additionally lease individual spaces in the fenced, gravel yard in the rear, providing exceptional secure storage space for vehicles, equipment, trailers, or similar.

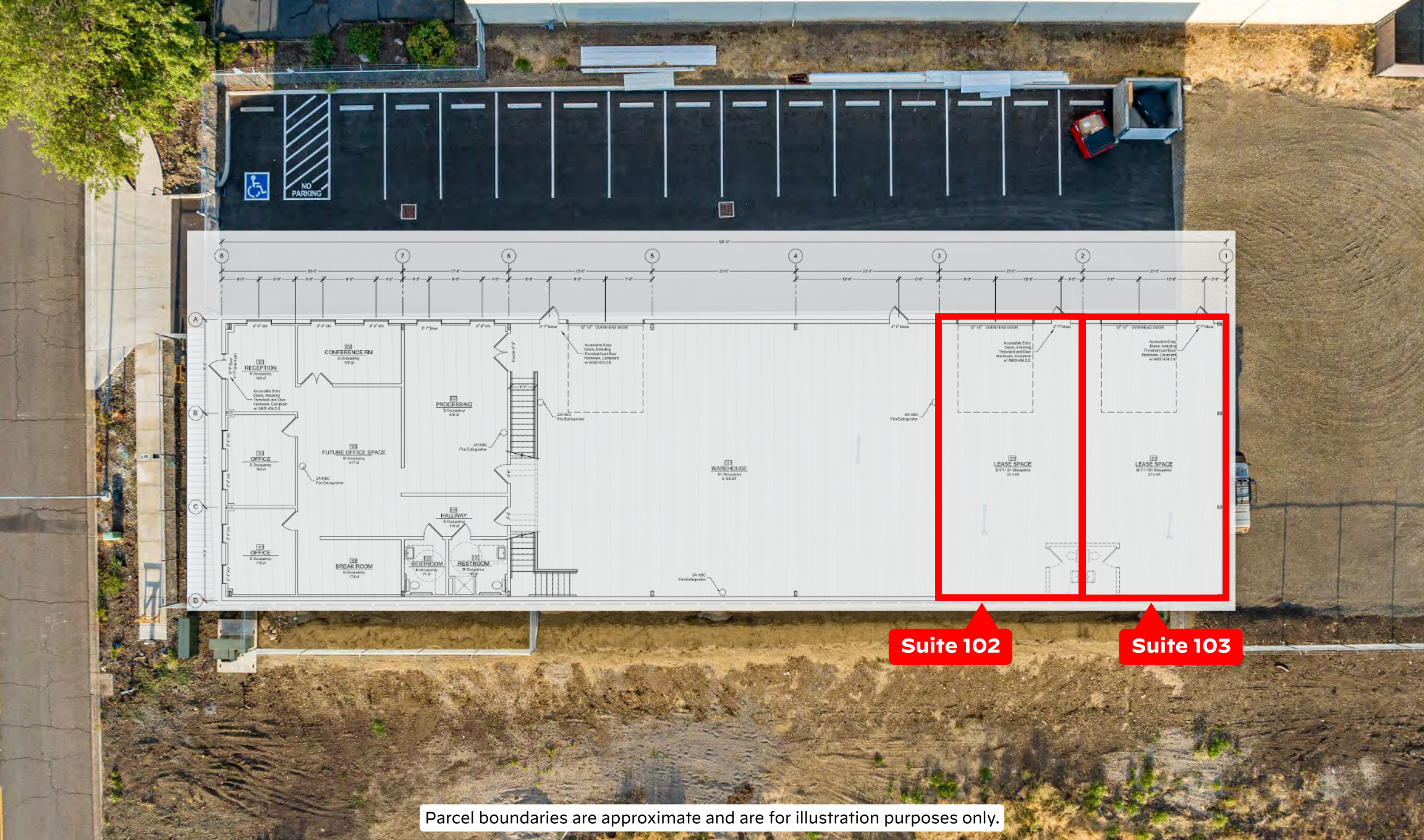
Users are encouraged to submit all proposals; all parties are to note that Landlord reserves the right to approve prospective tenant's use of the spaces. Contact brokers to arrange a tour and get more information.

The opportunity is clear for contractors, small businesses, creatives, or a wide variety of other users to enjoy one of the only brand-new, clean contractor garages, perfectly located within Medford!

## Offering Summary

Availability:	Immediately available
Base Rent:	Suite 102: \$1.25/SF/Mo (\$15.00/SF/Yr) Suite 103: \$1.25/SF/Mo (\$15.00/SF/Yr)
TI:	Reasonable TI proposals considered
Address:	2074 Commerce Dr, Medford, OR 97504
Zoning:	I-L (Light Industrial)
Space SF:	Combined: ±2,070  Suite 102: ± 1,035 SF Suite 103: ± 1,035 SF
Access:	Suite 102: (1) 10' x 14' roll-up door Suite 103: (1) 10' x 14' roll-up door
Clear Height:	19' peak sloping rearwards to 17'
Power:	3-phase, 200 amp service to each suite
Utilities:	Power, gas, water, sewer, internet, and single phone are supplied, tenant responsible for usage and upkeep
Use Restrictions:	Landlord reserves right to approve desired use(s).

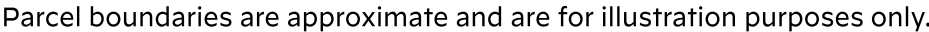




Parcel boundaries are approximate and are for illustration purposes only.

# Floorplan Overlay







Unit Summary

Availability: Immediately available

Base Rent: \$1.25/SF/Mo (\$15.00/SF/Yr), NNN

TI: Reasonable TI proposals considered

Space SF: ± 1,035 SF

Access: (1) 10' x 14' roll-up door

Clear Height: 19' peak sloping to 17'

Power: 3-phase; 200-amps

Utilities: Power, gas, water, sewer, internet, and single phone are supplied, tenant responsible for usage and upkeep

Sprinklers: Fully interior sprinkled

Use Restrictions: Landlord reserves right to approve desired use(s).

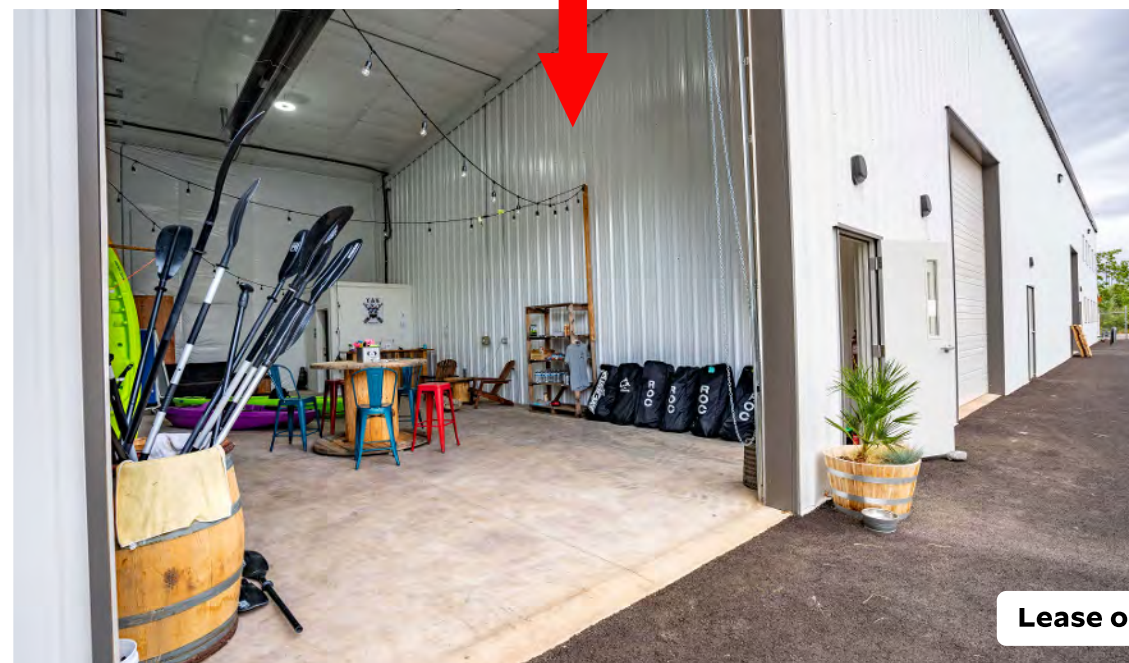






**Subject Photo - Access Doors**

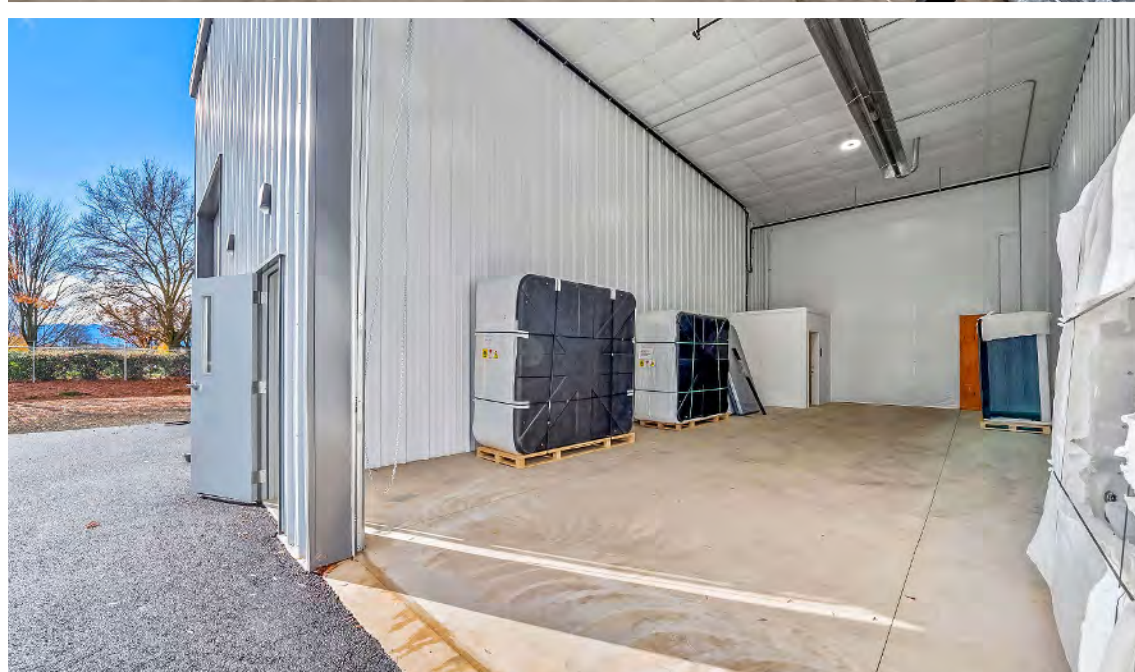
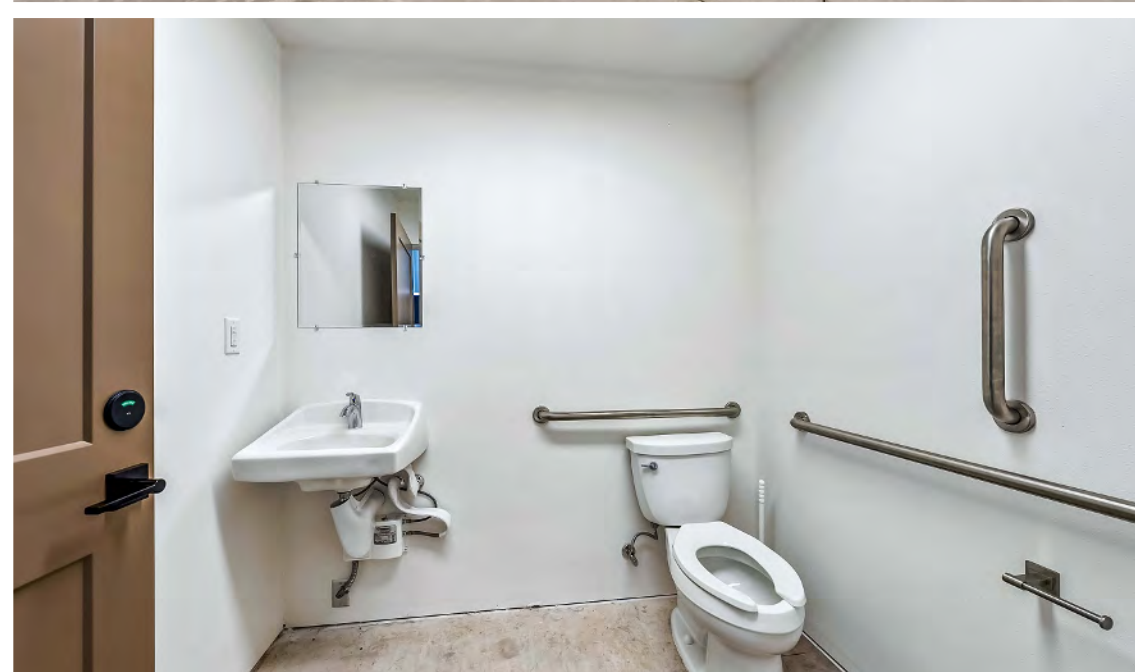




**Suite 103 | 1,035 SF**

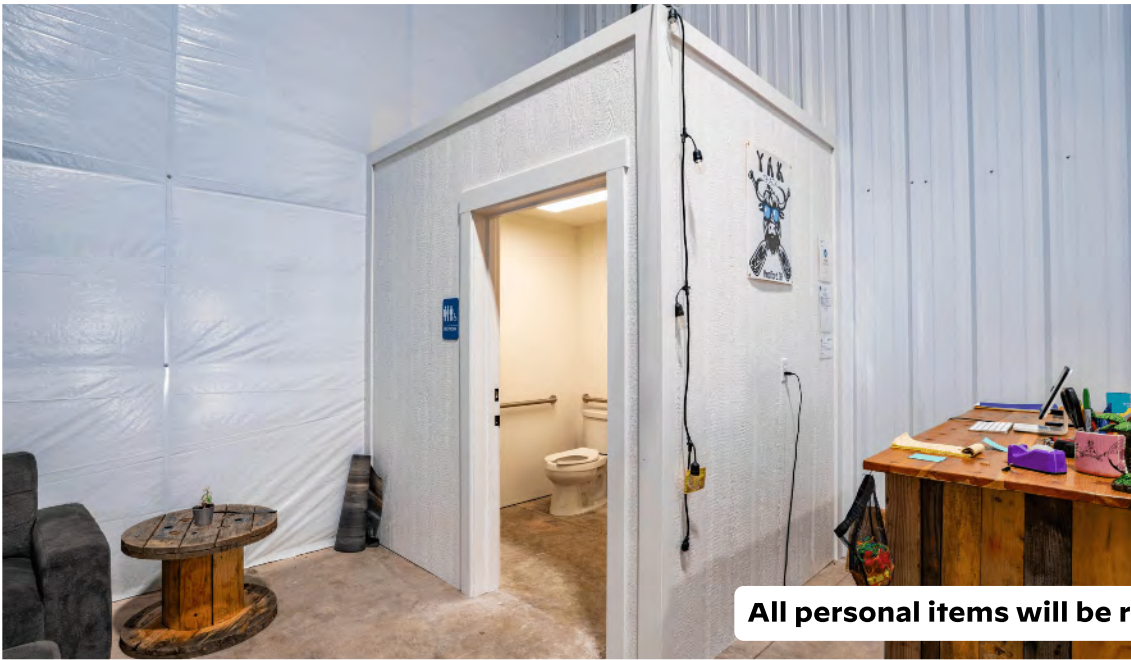
**1,035 SF | Suite 102**





**Suite 102 - Interior**





All personal items will be removed prior to occupancy.



# Suite 103 - Interior





## Subject Photos - Exterior





Office DEPOT  
Michaels  
OLD NAVY

Walmart

HOBBY LOBBY

ASHLEY

Mellelo  
Coffee Roasters

ROGUE VALLEY  
International  
Medford Airport

LOWE'S

BELFOR

Commerce Drive

Parcel boundaries are approximate and are for illustration purposes only.

# Corporate Neighbors





# Region Map - Rogue Valley



# Why Southern Oregon?

Southern Oregon, largely encompassing Jackson and Josephine Counties, is a world-class gem hiding in plain sight. Anchored by its mild Mediterranean climate, the area boasts the winning combination of being both strategically located between Portland and San Francisco, and having forward-thinking municipal leadership. This combination drives strong economic growth and has created a long runway for development across all asset classes.

**Southern Oregon** is a gateway to the entirety of the West Coast, via Interstate 5, North through Eugene, Salem, Portland, and Washington State, and South, through Redding, San Francisco, and down to Los Angeles. The local transportation system connects the most populated cities in the region of Medford, Ashland, and Grants Pass, and has dedicated highways Northeast to Bend and West to the Oregon Coast.

**Multiple billion-dollar companies** call Southern Oregon home, such as Lithia Motors (NYSE: LAD), Asante Health Systems, Harry & David (NYSE: FLWS), Pacific Retirement Services, and countless small and mid-sized businesses.

**Historically, the area's economy** was mainly driven by the timber and agricultural industries. In the past few decades, the area has become a healthcare hub, and has a diverse economy supported by the industrial, manufacturing, logistics, retail, senior/retirement living, and finance/professional sectors. Timber and agriculture still play a role, with Timber Products and Roseburg Forest Products' main facilities located nearby.

**A burgeoning golf destination**, the area has numerous renowned golf courses, and several other famous courses are within a short drive (Bandon Dunes, Pacific Dunes, Pronghorn Resort). Over 8 casinos are within a 6-hour drive, including Seven Feathers, Three Rivers, Elk Valley, and others.







# Southern Oregon Market



# Transaction Guidelines

2047 Commerce Drive, Suites 102 and 103, are being offered for lease only. Prospective users should rely on their own assumptions and base their offer/LOI on the "As-Is, Where-Is" condition of the Subject Property. Merit Commercial Real Estate ("MCRE") will be available to assist prospective purchasers with their review of the offering and answer any questions within their scope of practice. A tenant may lease either space, or both if needed.

**Property Tours:** Tours are available by appointment only and with the company of a listing broker or other representative.

**LOIs:** There is not currently a definitive date for LOIs to be submitted. When a prospective user prepares an offer for the Subject Property, such LOIs should, at a minimum, include the following:

- Lease rate; asking is \$1.25/SF/Month, NNN
- TI package, if any (only reasonable packages considered)
- Desired occupancy date
- Initial lease term and extension options, if any
- Tenant's desired use

Please contact listing brokers Scott and Caspian for additional information.

---

**Scott King**  
Principal Broker / Owner

**Caspian Hoehne**  
Licensed Broker

(541) 608-6704 / [team@merit-commercial.com](mailto:team@merit-commercial.com)  
[www.merit-commercial.com](http://www.merit-commercial.com)





# M Local Vendor Directory

## Notes & Background

This vendor directory is tailored to commercial property owners or asset managers (the "Contracting Party") and covers the most common recommendations we give. We do not provide blanket recommendations for attorneys or finance/tax professionals, but may provide them based on your specific scenario - please contact us. Vendors marked with a star symbol indicate that Merit Commercial Real Estate ("MCRE") may receive compensation from this vendor. MCRE assumes absolutely no liability or responsibility for the actions of any vendor on this list. It is the responsibility of the Contracting Party to independently vet, verify, pay, manage, or otherwise work with any vendor. MCRE recommends all Contracting Parties obtain multiple bids/proposals for all work contemplated.

## 1031 Accomodator

- ★ **IPX Exchange**, ipx1031.com..... (503) 223 3911
- the1031investor**, the1031investor.com..... (850) 889 1031
- First American Exchange**, firstexchange.com..... (503) 748 1031

## Architect

- arkitek**, arkitek.us..... (541) 591 9988
- CDArchitects**, cdarchitectsllp.com..... (541) 779 4363
- KSW Architects**, kswarchitects.com..... (541) 488 8200
- ★ **Oregon Architecture**, oregonarchitecture.biz..... (541) 772 4372
- ORW Architecture**, orwarchitecture.com..... (541) 779 5237

## Cleaning

### General / Power Washing / Graffiti

- Dustin Curbs** (Lot Cleaning), dustincurbs.com..... (541) 613 4189
- Roof Remedy**, roofremedy.com..... (541) 500 0890
- ★ **Rogue Pro Softwash**, rogueprosoftwash.com..... (541) 326 8294
- Renew Power Washing**, renewpwash.com..... (541) 601 7646

### Junk Removal

- ★ **AHC Maintenance** (junk removal & cleaning)..... (541) 690 6312
- Rogue Disposal**, roguedisposal.com..... (541) 779 4161

### Interior Cleaning / Unit Turns

- Clean Freaks**, cleanfreaks.net..... (541) 787 5218
- GraceWorks Cleaning**, graceworkscleaning.com..... (541) 292 3895
- ★ **J&J Cleaning**, jandjhousecleaning.com..... (541) 621 3297

## Commercial Construction / Ground-Up

- Adroit Construction**, adroitbuilt.com..... (541) 482 4098
- Buntin Construction**, buntinconstruction.com..... (541) 776 0032
- JB Steel**, jbsteelconstruction.com..... (541) 773 8325
- Outlier Construction**, outlierbuilt.com..... (541) 622 2040
- S+B James**, sbjames.com..... (541) 826 5668
- Vitus Construction**, vitusconstruction.net..... (541) 855 7177

## Contractors / Handyman

### General Contractors

- ★ **Abound Excavation**, abound-excavation.com..... (541) 646 4071
- Better Built Const.**, bbconstructionmedford.com..... (541) 690 1100
- BLD Construction**..... (541) 450 1141
- Christian Massey Construction**, cmc-built.com..... (541) 326 6169
- ★ **DMC Construction**, dmconstructionoregon.com..... (541) 254 4245
- Lucas Main Construction**, lmcoregon.com..... (541) 660 4053
- Parker Built**, parkerbuiltconstruction.com.com..... (541) 778 4771
- Southridge Builders**, southridgebuilders.com..... (541) 890 0437
- Summit Construction**, summitbroscp.com..... (541) 761 6020
- Taylorred Elements**, taylorredelements.com..... (541) 690 1617
- ★ **Vitus Construction**, vitusconstruction.net..... (541) 855 7177

### Handyman

- ★ **AHC Maintenance**..... (541) 690 6312
- Elite Maintenance**, gotelitemaintenance.com..... (541) 500 1624
- Handyman Const.**, handymansouthernoregon.com... (541) 233 2917
- PropertyPros**, propertyprosoregon.com..... (541) 816 5920

### Specialty Contractors

- AVS Elevator**, avselevator.com..... (503) 876 3696
- Bill's Glass**, billsglass.com..... (541) 773 5881
- Cut N' Break**, Concrete, cutnbreak.com..... (541) 779 1482
- Diamond D Welding**, diamondddwelding.com..... (541) 301 7696
- Mountain View Paving**, mountainviewpaving.com.... (541) 535 3840
- Otis Elevator**, otisworldwide.com..... (503) 639 7045
- Ram Jack**, Foundations, ramjackwest.com..... (541) 275 9097
- Sandeem Masonry**, sandeemasonry.com..... (541) 479 8844
- S. Oregon Glass**, soglassandmirror.com..... (541) 500 1995
- Terra Firma**, Foundations, goterrafirma.com..... (541) 667 0700

## Consultants

### Land Use

- ★ **CSA Planning**, csaplanning.com..... (541) 779 0569
- LaNier Land Consulting**, lanierconsultingor.com..... (541) 879 3477
- Green Top Planning**, greentoppdr.com..... (517) 582 7300
- Richard Stevens & Assoc.**, rsaoregon.com..... (541) 773 2646

### Specialities

- Advanced Diag.** (air quality), indoordiagnosics.com.. (541) 301 2231
- Neilson Research**, (water quality) nrclabs.com..... (541) 770 5678
- Parsons Water Rights**, parsonswater.com..... (541) 499 0257
- TRC Co.**, (EnergyTrust), trccompanies.com..... (541) 592 9203
- Water Right Services**, oregonwater.us..... (541) 389 2837

## Doors (Garage, Overhead, Dock Doors)

- American Industrial Door**, americandoorllc.com..... (541) 644 5555
- Bear Creek Overhead**, bearcreekoverhead.com..... (541) 821 1736
- Overhead Door Co. of Rogue Valley**, odcrv.com..... (541) 702 0820
- Pacific Door & Sash**, pacificdoorandsash.com..... (541) 826 3944

## Electrical

- JT Electric**..... (541) 734 5714
- Murphy Electric**, murphymadeinc.com..... (541) 582 4186
- Precision Electric**, precisionelectric.co..... (541) 773 6279
- Siskiyou Electric**..... (541) 951 1092
- Welburn Electric**, welburnelectric.com..... (541) 535 3727
- Winters Electric**, winterselectric.com..... (719) 477 0535

## Engineering

- Gerlitz Engineering**, gerlitzengineering.com..... (541) 244 2617
- KAS & Associates**, kasinc.com..... (541) 772 5807
- Marquess Inc.**, marquess.com..... (541) 772 7115
- Mockridge Eng.**, mockridgeengineering.com..... (541) 892 3289
- Powell Eng.**, powellengineeringconsulting.com..... (541) 613 0723

## Environmental

- ★ **Alpine Environmental**, alpineabatment.com..... (541) 944 4685
- Green Environmental**, green-em.com..... (855) 277 5307
- Western States Enviro.**, wsenvironmental.com..... (541) 770 2482

## Equipment Rental

- FMI Equipment**, fmiequipment.com..... (800) 287 2048
- Sunbelt Rentals**, sunbeltrentals.com..... (541) 779 2855
- Steward's Porta Potties**, stewardsportapotties.com.. (541) 734 7343
- Wilson Equipment**, wilsonequipment.net..... (541) 830 3966
- United Rentals**, unitedrentals.com..... (541) 773 7323

## Fencing (Rental & Permanent)

- Medford Fence**, medfordfenceco.com..... (541) 779 5625
- Mountain View Fence**, mountainviewfence.org..... (541) 879 0126
- Quality Fence**, qualityfenceco.com..... (541) 644 2281

## HVAC

- ★ **Advanced Air & Metal**, myadvancedair.com..... (541) 772 6866
- Jahnke Heating & AC**, jahnkeheatingandair.com..... (541) 535 4470
- Long's HVAC**, longshvac.com..... (541) 772 4201
- Metal Masters**, metalmasters-inc.com..... (541) 779 1049
- Rogue Valley H&AC**, rvheat.com..... (541) 215 4760
- S. Oregon Heating & AC**, sohac.com..... (541) 773 8733
- Stone Heating & Air**, stoneheatair.com..... (541) 855 5521



# Local Vendor Directory

## Insurance (Commercial Property)

- ★ **Country Financial**, countryfinancial.com..... (541) 779 8893
- Hart Insurance**, hartinsurance.com..... (541) 779 4232
- Highstreet Insurance**, hsp.com..... (541) 779 0177
- Midland Empire**, midlandempireinsurance.com..... (541) 476 7715

## Inspections

- GOHI**, greateroregonhomeinspections.com..... (541) 282 3141
- NPI SW Oregon**, npiweb.com..... (541) 210 8055
- Partner ESI**, partneresi.com..... (800) 419 4923
- Peak Inspections**, peakbuildinginspections.com..... (541) 951 5484
- Rogue Inspection Services**, rogueinspection.com..... (541) 507 7674

## Landscaping

### Maintenance

- Bumgardners**, bumgardnerslandscape.com..... (541) 826 7713
- The Grounds Guys**, groundsguys.com..... (541) 982 2150
- Nature's**, naturelandscapemedfordoregon.com..... (541) 821 5344
- US Lawns**, uslawns.com..... (541) 500 8650
- ★ **Villa's**, villaslandscapemaintenance.com..... (541) 973 5140

### Landscape Design / Contractors

- CV Landscape**, cvlandscapemaintenance.com..... (541) 613 8535
- Gary Krause**, garykrauselandscape.com..... (541) 899 7643
- Terra**, terralandscapelandconstruction.com..... (541) 778 9843

## Lending

### Regionals / National Banks with Local Presence

- Banner Bank, Jay Stormberg**, bannerbank.com..... (541) 608 5053
- Evergreen, Kris Woodburn**, evergreenfederal.bank... (541) 479 3351
- First Interstate, Todd Fryer**, firstinterstatebank.com. (541) 608 8971
- People's, Jason Reno**, peoplesbank.bank..... (541) 776 5350
- Rogue Credit Union**, roguecu.org..... (541) 734 0607
- WaFd, Bryan Pistole**, wafdbank.com..... (541) 858 2989

### SBA / Private Lending

- Jessica Ayers (SBA, Evergreen Federal)** ..... (800) 878 6613
- Legacy Lending (Private), Dane Fitch** ..... (206) 972 8127
- Pacific Capital (Private)**, pac-capital.com..... (541) 973 2444
- Sophia Harding (SBA, Columbia Bank)**, ..... (541) 227 0311

## Locksmith

- Bear Creek Lock**, bearcreeklock.com..... (541) 770 5888
- J&L Pacific**, jandlpacificlockandkey.com..... (541) 930 8363
- ★ **The Keyman**, tkms.com..... (541) 690 1751

## Movers

- Back Savers**, backsaversmovingservice.com..... (541) 944 4820
- Hall of Fame**, halloffamemovingllc.com..... (541) 778 1845
- Skinny Wimp Moving**, skinnywimpmoving.com..... (541) 531 3634

## Painting

- Brotherhood Painting**, brotherhood-painting.com..... (541) 301 5862
- Corey Robbins**, coreyrobbins.com..... (541) 770 5275
- ★ **Coyotl Painting**, coyotlpainting.com..... (541) 630 1174
- Rick Stevens**, rickstevenspainting.com..... (541) 973 1729

## Property Management

- Cornerstone Property Management**,..... (541) 200 3954
- CPM**, cpmrealestateservices.com..... (541) 773 6400
- ★ **Integrity PM**, integritypropertymanagement.com..... (541) 414 4477

## Pest Control

- A-1 Exterminators**, aone-exterminators.com..... (541) 472 1094
- Action Pest**, actionpestcontrolmedford.com..... (541) 770 9510
- ★ **Axiom Pest Control**, axiompest.com..... (503) 772 9466
- Bugs Northwest**, bugsnw.com..... (541) 472 5003
- Pointe Pest Control**, pointepest.com..... (541) 526 5692

## Plumbing

- Accurate Plumbing**, accurate-plumbing.com..... (541) 773 3035
- Artoff Plumbing**, artoffplumbing.com..... (541) 582 0853
- HD Plumbing**, hdplumbingoregon.com..... (541) 646 0407
- Hukill's Plumbing**, hukills.com..... (541) 734 9000
- Jennings Plumbing**, jenningstheplumber.com..... (541) 261 5724
- SOS Plumbing**, sosplumbing.net..... (541) 535 5063
- Tanks Plumbing**, tanksplumbing.net..... (541) 879 3777

## Remediation / Restoration

- ★ **Belfor**, belfor.com..... (541) 644 5454
- ProKleen**, getprokleen.com..... (541) 857 1818
- Rogue Restoration**, roguerestorationpros.com..... (541) 778 1552
- ServiceMaster**, servicemasterrestore.com..... (541) 249 7914

## Roofing / Solar

- Bleser Built**, bleserbuiltroofing.com..... (541) 601 7870
- Hoag Roofing**, hoagroofing.com..... (541) 779 7743
- JAM Roofing**, jamroofing.com..... (541) 773 7663
- Lawless Roofing**, lawlessroofing.com..... (541) 479 1839
- Pressure Point**, pressurepointroofing.com..... (541) 876 8209
- Purelight Power**, purelightpower.com..... (541) 816 4047
- Rivas Roofing**, rivasconstructionandroofing.com..... (541) 512 1337
- Sunshine Solar**, sunshinesolarinc.com..... (541) 236 1767
- True South Solar**, truesouthsolar.net..... (541) 203 0525

## Security / Locksmith

### Physical Security

- Concierge Security**, concierge-security.com..... (541) 218 9672
- Maksimum Security**, maksimuminc.com..... (541) 608 2820
- NW Defense Contracting**, nwdefcon.com..... (541) 500 4066

### Access Controls / Monitoring / Life Safety

- C&S Fire Safe Services**, csfiresafe.com..... (541) 673 1337
- Cook Solutions Group**, cooksolutionsgroup.com..... (844) 305 2665
- Johnson Controls**, johnsoncontrols.com..... (541) 857 5112
- Point Monitor**, pointmonitor.com..... (541) 210 8738
- Pye Barker**, pyebarkerfs.com..... (541) 245 9223
- SOS Alarm**, sosasap.com..... (541) 507 9084
- Vyanet Security**, vyanetsecurity.com..... (541) 295 3223

## Surveyors / Drafting

- Hoffbuhr & Assoc.**, hoffbuhr.com..... (541) 779 4641
- L.J. Friar & Assoc.**, friarandassociates.com..... (541) 772 2782
- Metzger Survey**, metzgersurveying.com..... (541) 727 2749
- Neathamer Survey**, neathamer.com..... (541) 732 2869
- Pacific Crest Survey**, pacificcrestsurveying.com..... (408) 375 5220
- Pariani Land Surveying**, parianils.com..... (541) 890 1131
- TerraSurvey**, terrasurveyinc.com..... (541) 482 6474

## Signage / Printing

- Minuteman Press**, minuteman.com..... (541) 776 7966
- ProntoPrint**, goprnto.com..... (541) 779 1952
- ProVisual Design**, pvdprints.com..... (541) 772 8045
- Ramsay Signs**, ramsaysigns.com..... (541) 664 7704
- ★ **SignApply**, signapplymedford.com..... (541) 414 7620
- SignDude**, thesigndude.com..... (541) 858 2701
- SignsNow**, signsnow.com..... (541) 608 6800

## Notes & Background

This vendor directory is tailored to commercial property owners or asset managers (the "Contracting Party") and covers the most common recommendations we give. We do not provide blanket recommendations for attorneys or finance/tax professionals, but may provide them based on your specific scenario - please contact us. Vendors marked with a star symbol indicate that Merit Commercial Real Estate ("MCRE") may receive compensation from this vendor. MCRE assumes absolutely no liability or responsibility for the actions of any vendor on this list. It is the responsibility of the Contracting Party to independently vet, verify, pay, manage, or otherwise work with any vendor. MCRE recommends all Contracting Parties obtain multiple bids/proposals for all work contemplated.





# Notice of Disclosures

This Offering Memorandum (the "Document") is intended for only the party receiving it from Merit Commercial RE, LLC ("MCRE"), and should not be made available to any other reviewing entity without the prior written consent of MCRE. All information included in this Document has been obtained from sources deemed reliable, however, Owner, MCRE, and/or their representatives make no representations or warranties, expressed or implied, as to the accuracy of the information, and makes no warranty or representation into the exact state of the property, the presence of contaminating substances, PCB's or asbestos, the property or owner's compliance with State and Federal regulations, or the physical condition of any improvements on the property. The recipient of this Document must independently verify the information and assumes any and all risk for inaccuracies contained herein. The information contained in this Document is not a substitute for a thorough due diligence investigation.

This Document and all related materials, including but not limited to text, graphics, financial data, projections, designs, and intellectual property contained herein, are the proprietary and confidential property of MCRE. The Document is provided solely for the use of the intended recipient(s) for the purpose of evaluating the specific investment or transaction opportunity described herein.

Any unauthorized use, reproduction, duplication, distribution, or adaptation of the Document or any portion thereof, in any form or by any means, whether electronic, mechanical, or otherwise, is strictly prohibited without the express written consent of MCRE. This includes, but is not limited to, copying, modifying, creating derivative works, or using the Document as a template or basis for other materials. Such actions may constitute a violation of applicable intellectual property laws, including copyright and trade secret laws.

MCRE reserves all rights to pursue any and all legal remedies available to the fullest extent permitted by law against any individual or entity engaging in unauthorized use, reproduction, or distribution of this Document. By accepting receipt of this Document, you acknowledge and agree to abide by these restrictions and to maintain the confidentiality and integrity of the information provided.

---

**Merit Commercial RE, LLC**

Oregon license 201001084  
310 E. 6th Street, STE 400  
Medford, OR 97501

**Scott King**

Licensed Principal Broker in the  
State of Oregon (#200602153)

**Caspian Hoehne**

Licensed Real Estate Broker in the  
State of Oregon (#201234073)