

Medical Office for Sublease

TIMESHARE MEDICAL SPACE AVAILABLE (1-3 DAYS)

8910 N 43rd Ave | Suite 104 | Glendale, AZ 85302



Eric Butler
D: 480.522.2813
M: 602.809.6570
ebutler@cpiaz.com

Phill Tomlinson
D: 480.522.2800
M: 480.330.8897
ptomlinson@cpiaz.com

 **COMMERCIAL PROPERTIES INC.**
Locally Owned. Globally Connected. CORFAC INTERNATIONAL

TEMPE: 2323 W University Drive, Tempe, AZ 85281 | 480.966.2301
SCOTTSDALE: 8767 E Via de Commercio, Suite 101, Scottsdale, AZ 85258 | www.cpiaz.com

The information contained herein has been obtained from various sources. We have no reason to doubt its accuracy; however, J & J Commercial Properties, Inc. has not verified such information and makes no guarantee, warranty or representation about such information. The prospective buyer or lessee should independently verify all dimensions, specifications, floor plans, and all information prior to the lease or purchase of the property. All offerings are subject to price change, prior sale, lease, or withdrawal from the market without prior notice. Effective: 09 25 25

Medical Office for Sublease

TIMESHARE MEDICAL SPACE AVAILABLE (1-3 DAYS)

8910 N 43rd Ave | Suite 104 | Glendale, AZ 85302



PROPERTY HIGHLIGHTS

- Frontage on 43rd Ave
- Plenty of parking available 5:1,000 ratio
- Nearby retail, restaurants & public transportation
- Easy access to I-17 & Loop 101
- C-2 Zoning, City of Glendale



Eric Butler

D: 480.522.2813

M: 602.809.6570

ebutler@cpiaz.com

Phill Tomlinson

D: 480.522.2800

M: 480.330.8897

ptomlinson@cpiaz.com



COMMERCIAL PROPERTIES INC.

Locally Owned. Globally Connected. CORFAC INTERNATIONAL

TEMPE: 2323 W University Drive, Tempe, AZ 85281 | 480.966.2301
SCOTTSDALE: 8767 E Via de Commercio, Suite 101, Scottsdale, AZ 85258 | www.cpiaz.com

The information contained herein has been obtained from various sources. We have no reason to doubt its accuracy; however, J & J Commercial Properties, Inc. has not verified such information and makes no guarantee, warranty or representation about such information. The prospective buyer or lessee should independently verify all dimensions, specifications, floor plans, and all information prior to the lease or purchase of the property. All offerings are subject to price change, prior sale, lease, or withdrawal from the market without prior notice. Effective: 09/25/25

Medical Office for Sublease

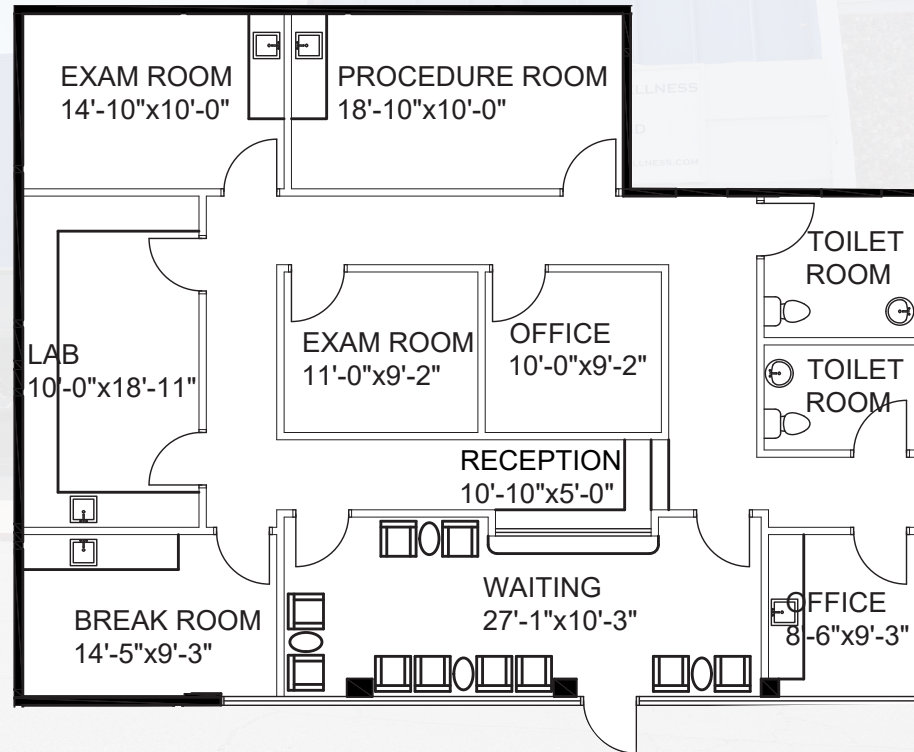
TIMESHARE MEDICAL SPACE AVAILABLE (1-3 DAYS)

8910 N 43rd Ave | Suite 104 | Glendale, AZ 85302

LOBBY



Suite 104: ±2,024 SF | CALL BROKER FOR PRICING



Eric Butler
D: 480.522.2813
M: 602.809.6570
ebutler@cpiaz.com

Phill Tomlinson
D: 480.522.2800
M: 480.330.8897
ptomlinson@cpiaz.com

 **COMMERCIAL PROPERTIES INC.**
Locally Owned. Globally Connected. CORFAC INTERNATIONAL

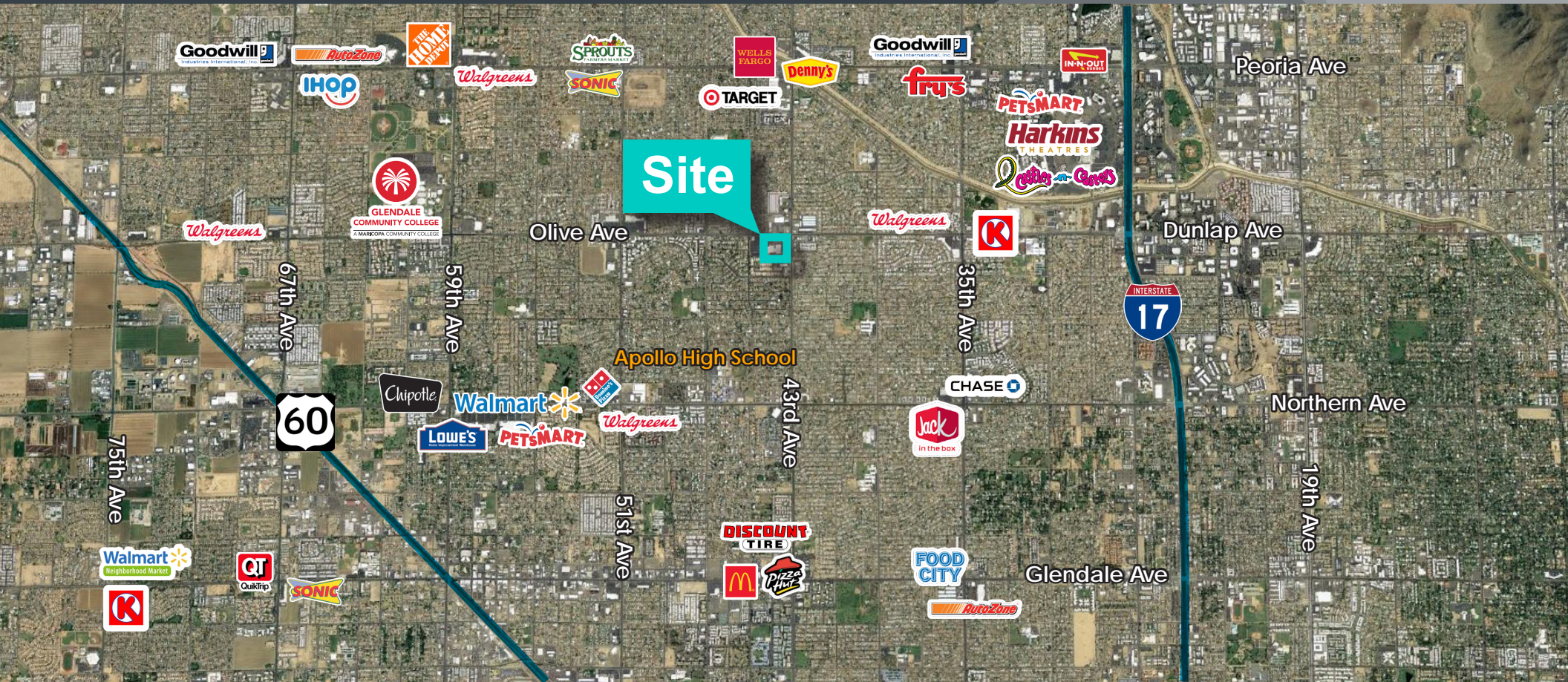
TEMPE: 2323 W University Drive, Tempe, AZ 85281 | 480.966.2301
SCOTTSDALE: 8767 E Via de Commercio, Suite 101, Scottsdale, AZ 85258 | www.cpiaz.com

The information contained herein has been obtained from various sources. We have no reason to doubt its accuracy; however, J & J Commercial Properties, Inc. has not verified such information and makes no guarantee, warranty or representation about such information. The prospective buyer or lessee should independently verify all dimensions, specifications, floor plans, and all information prior to the lease or purchase of the property. All offerings are subject to price change, prior sale, lease, or withdrawal from the market without prior notice. Effective: 09/25/25

Medical Office for Sublease

TIMESHARE MEDICAL SPACE AVAILABLE (1-3 DAYS)

8910 N 43rd Ave | Suite 104 | Glendale, AZ 85302



Eric Butler
D: 480.522.2813
M: 602.809.6570
ebutler@cpiaz.com

Phill Tomlinson
D: 480.522.2800
M: 480.330.8897
ptomlinson@cpiaz.com

 **COMMERCIAL PROPERTIES INC.**
Locally Owned. Globally Connected. CORFAC INTERNATIONAL

TEMPE: 2323 W University Drive, Tempe, AZ 85281 | 480.966.2301
SCOTTSDALE: 8767 E Via de Commercio, Suite 101, Scottsdale, AZ 85258 | www.cpiaz.com

The information contained herein has been obtained from various sources. We have no reason to doubt its accuracy; however, J & J Commercial Properties, Inc. has not verified such information and makes no guarantee, warranty or representation about such information. The prospective buyer or lessee should independently verify all dimensions, specifications, floor plans, and all information prior to the lease or purchase of the property. All offerings are subject to price change, prior sale, lease, or withdrawal from the market without prior notice. Effective: 09/25/25