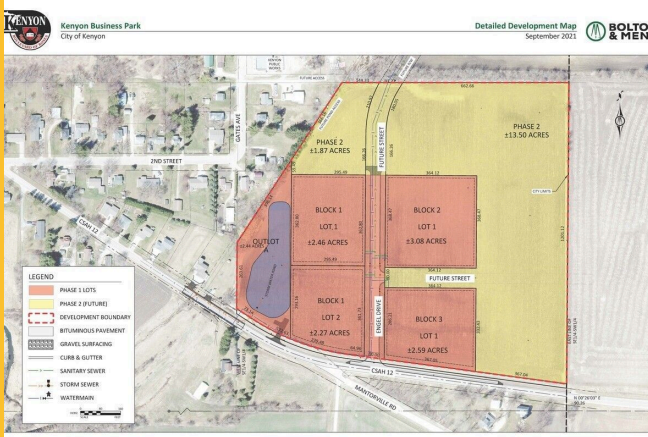




Kenyon Industrial Park

450 - 551 Engel Drive, Kenyon, MN, 55946

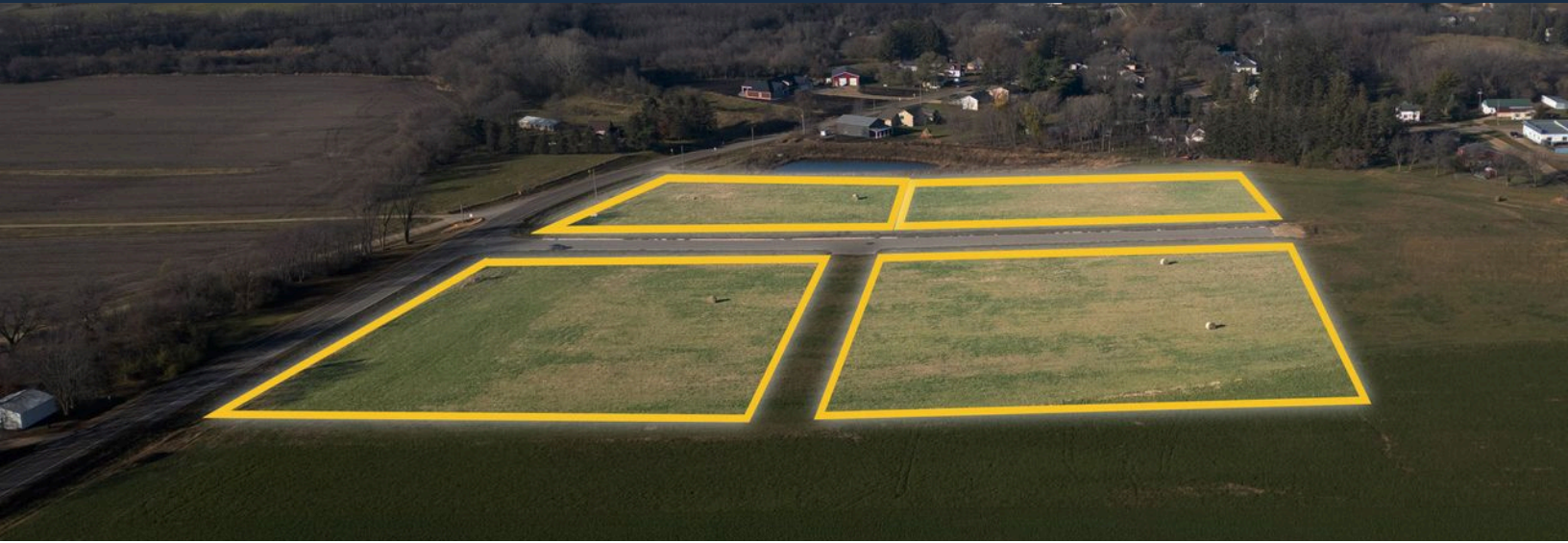


- **Price Per Square Foot** \$1.88
- **Lot Size** 2.27 Acres - 3.08 Acres
- **Property Tax** Contact Agent
- **Zoning** 958 – 5E MUNICIPAL-PUBLIC SERVICE-OTHER

- Build-Ready Lots
- Strategic Location
- Business-Friendly Environment
- Promising Growth Potential
- Appealing Community Setting
- Versatile Development Options

Kenyon Industrial Park

450-551 Engel Dr, Kenyon, MN 55946



Unlock the potential of your business in Kenyon's Industrial Park! Strategically designed to support growth and innovation, this industrial park offers four nearly build-ready lots with essential infrastructure already in place, including curb, gutter, and on-site utilities.

Kenyon, Minnesota, is a welcoming and vibrant community known for its small-town charm, excellent school system, and affordability. The town is part of the well-regarded Kenyon-Wanamingo School District, which provides quality education and fosters a supportive atmosphere for families—

Price Per Square Foot	\$1.88
Lot Size	2.27 Acres - 3.08 Acres
Property Tax	Contact Agent
Zoning	958 – 5E MUNICIPAL-PUBLIC SERVICE-OTHER

