

FOR LEASE

# 1700 MONTAGUE EXPY

SAN JOSE, CA 95035

±33,000 SF CROSS DOCK WAREHOUSE  
ON 5.8 ACRES

Available Now



**BRIAN MATTEONI**

Executive Vice President

Lic. 00917296

+1 408 453 7407

brian.matteoni@cbre.com

**CRAIG KOVALESKI**

Senior Vice President

Lic. 01303011

+1 408 453 7428

craig.kovaleski@cbre.com

± 33,000 SF

**CBRE**



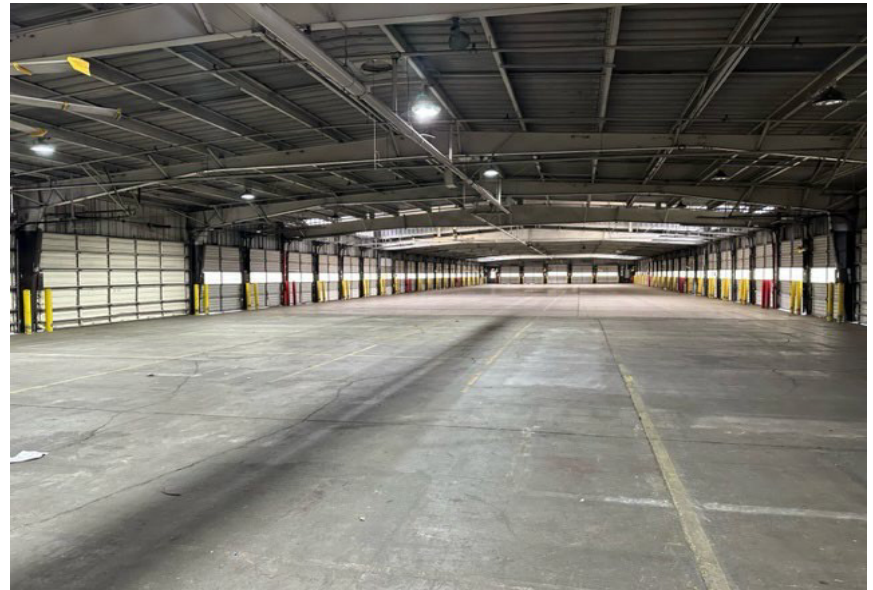
1700 MONTAGUE EXPRESSWAY

SAN JOSE, CA 95035

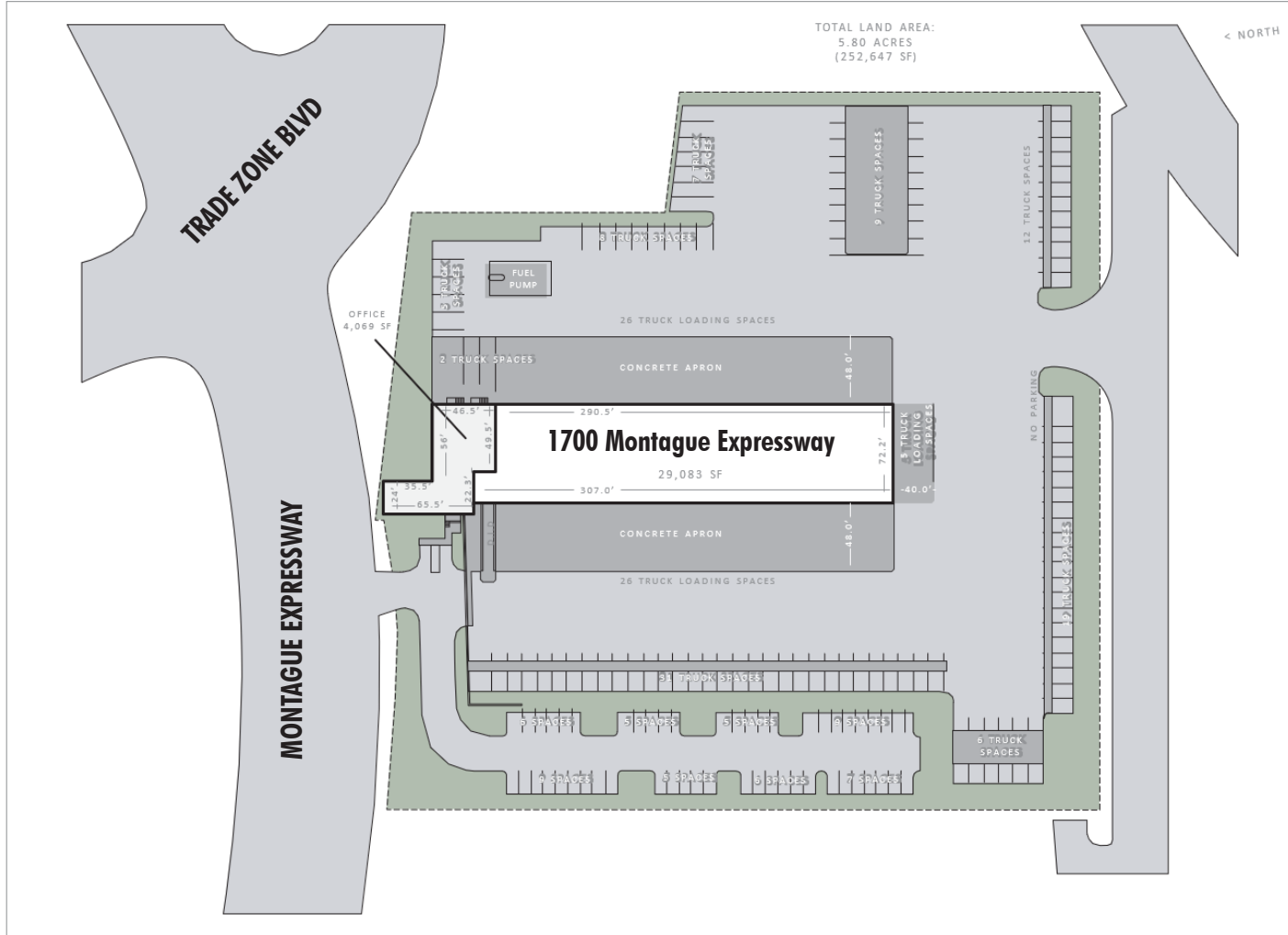
FOR LEASE

## SALIENT PROPERTY FACTS

- 56 Dock Doors
- 1 Drive-in Door
- 5.8 Acres
- 29,083 SF Cross Dock Building
- 4,069 SF Office Building
- 33,452 Total SF
- 72.2' Cross Dock Width
- Building Height - 13' at Wall and 14' 6" at Centerline
- 54 Vehicle Parking Stalls
- 99 Trailer Parking Spaces
- Sprinklered



## SITE PLAN



1700 MONTAGUE EXPRESSWAY  
SAN JOSE, CA 95035

FOR LEASE

## AERIAL SHOT



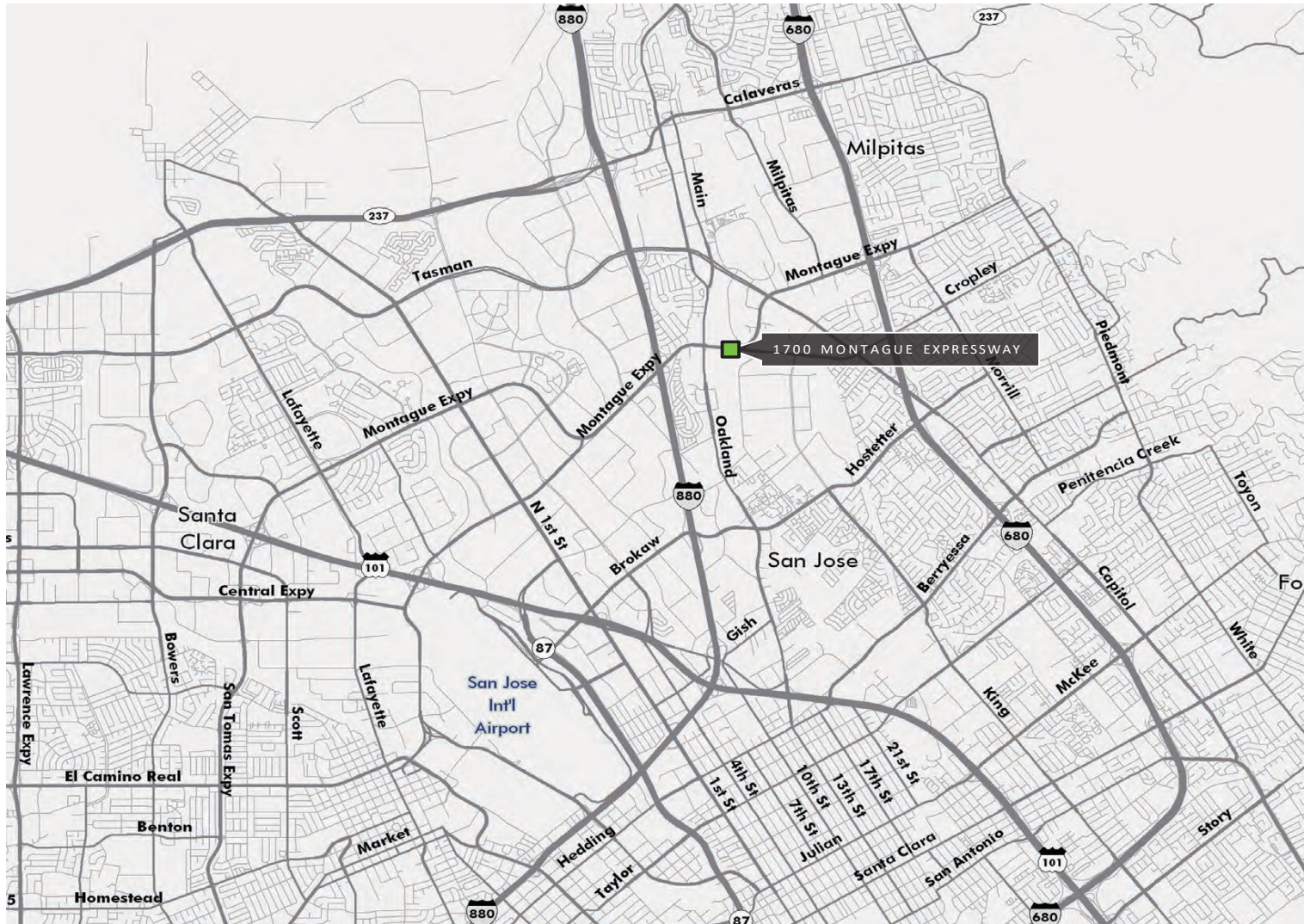


1700 MONTAGUE EXPRESSWAY

SAN JOSE, CA 95035

FOR LEASE

## LOCATOR MAP





FOR LEASE

# 1700 MONTAGUE EXPY

SAN JOSE, CA 95035

± 33,000 SF CROSS DOCK WAREHOUSE  
ON 5.8 ACRES

Available Now



## LISTING AGENTS

### BRIAN MATTEONI

Executive Vice President  
Lic. 00917296  
+1 408 453 7407  
brian.matteoni@cbre.com

### CRAIG KOVALESKI

Senior Vice President  
Lic. 01303011  
+1 408 453 7428  
craig.kovaleski@cbre.com

© 2023 CBRE, Inc. All rights reserved. This information has been obtained from sources believed reliable but has not been verified for accuracy or completeness. CBRE, Inc. makes no guarantee, representation or warranty and accepts no responsibility or liability as to the accuracy, completeness, or reliability of the information contained herein. You should conduct a careful, independent investigation of the property and verify all information. Any reliance on this information is solely at your own risk. CBRE and the CBRE logo are service marks of CBRE, Inc. All other marks displayed on this document are the property of their respective owners, and the use of such marks does not imply any affiliation with or endorsement of CBRE. Photos herein are the property of their respective owners. Use of these images without the express written consent of the owner is prohibited.