

# High Identity Retail Opportunity at Major Intersection

WALNUT CREEK

**M**  
2890  
NORTH MAIN



**±4,000 - 12,344 SF**  
**FLEXIBLE DEMISING OPTIONS**

 the econic  
company®

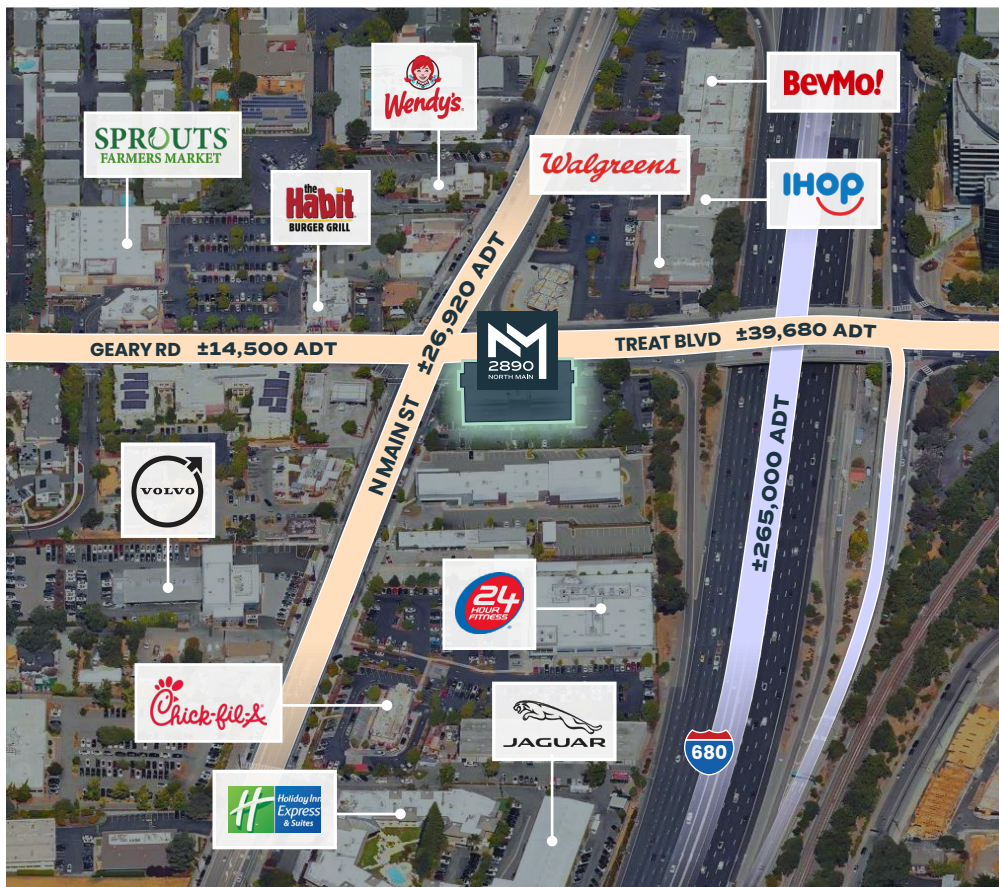
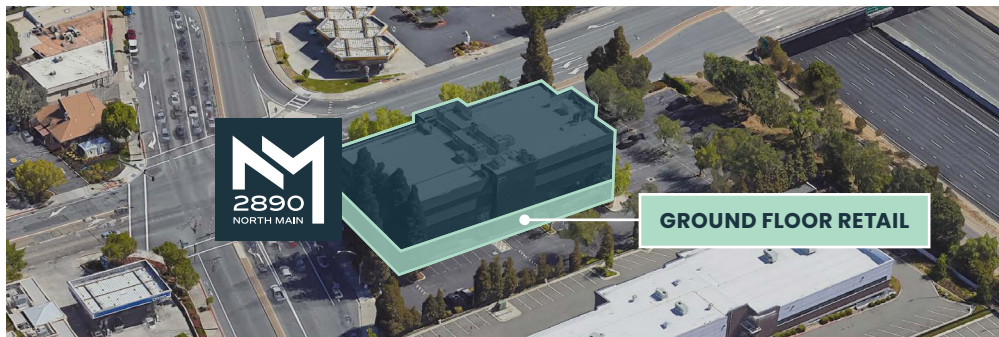
**Matt Sweeney** msweeney@theconiccompany.com / (408) 863-1444 / CalDRE: 01746896

**Nicole Lyon** nlyon@theconiccompany.com / (408) 400-7008 / CalDRE: 01975898



CENTURY | URBAN

# PROPERTY Highlights



## RETAIL HIGHLIGHTS

- Ground floor retail opportunity with tremendous hard corner exposure
- Prominent building signage visible to 26,920 cars per day on N Main and 39,680 cars per day on Treat Blvd
- Flexible demising options (±4,000 - 12,344 SF)
- Regional access via I-680 with 265,000 cars per day

## DEMOGRAPHICS (2023)

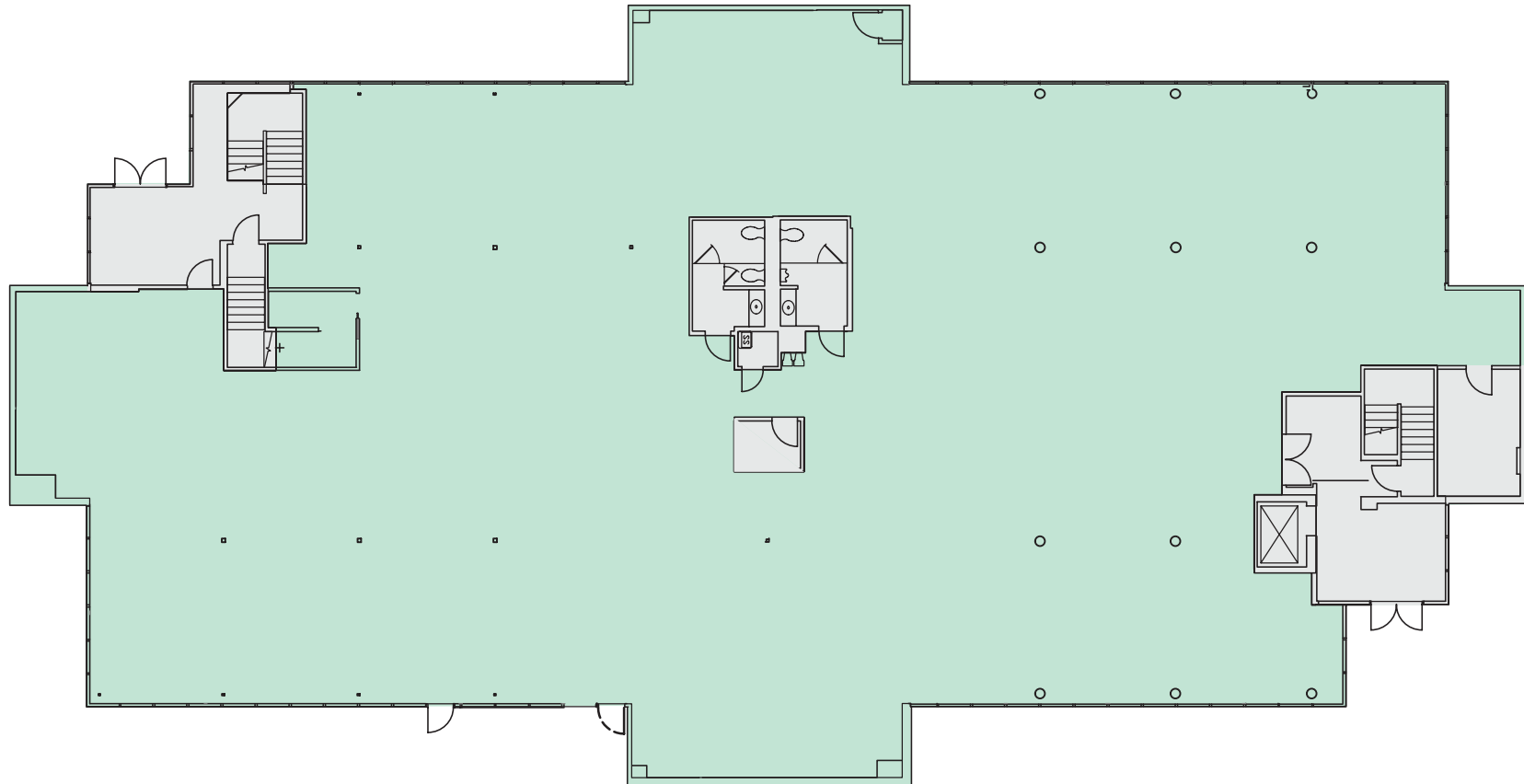
	1 Mile	3 miles	5 Miles
Daytime Population	25,580	154,873	280,330
Avg. Household Income	\$163,181	\$181,106	\$177,073
Total Population	24,430	134,612	260,546

## TRAFFIC COUNTS

Highway 680	265,000 ADT
N Main Street	26,920 ADT
Treat Blvd	39,680 ADT

**±4,000 - 12,344 SF**

FLEXIBLE DEMISING OPTIONS



MARKET  
**Aerial**

**DOWNTOWN PLEASANT HILL**

ROSS DRESS FOR LESS, Michaels, ULTA BEAUTY, GNC, carter's, verizon, TOGO'S GREAT SANDWICHES, URBAN PLATES, COLD STONE CREAMERY

**CROSSROADS SHOPPING CENTER**

DOLLAR TREE, DICK'S SPORTING GOODS, Marshalls, Friedman's, KOHL'S, DSW

**GREGORY VILLAGE**

Goodwill, GROCERY OUTLET Bargain Market

**COSTCO WHOLESALE**

**SAFEWAY**

**OAK GROVE PLAZA**

TRADER JOE'S, pet food express

**BEST BUY Total Wine & MORE**, Bassett HOME FURNISHINGS

**SAFEWAY**



**SPROUTS FARMERS MARKET**

**24 HOUR FITNESS**

**WHOLE FOODS MARKET ACE Hardware**

**PALOS VERDES MALL**

Lynard's MARKETS, RITE AID, SNAP FITNESS 24-7

**Walgreens BevMo!**

**YGNACIO PLAZA**

TJ-maxx, Footwear etc., 19 Sports Basement, Mendocino Farms

**PLAZA CENTER SHOPPING MALL**

WHOLE FOODS MARKET, SAFEWAY, NOAH'S NY BAGELS, McCaulou's, CLUB PILATES, See's CANDIES

**TARGET**

**SAFEWAY**

**ROSS DRESS FOR LESS**

**SAFEWAY, CVS, crumbl cookies, The UPS Store, Chevron**

**TRADER JOE'S**

**WHOLE FOODS MARKET**

**BROADWAY PLAZA**

macy's, FINISH LINE, OLD NAVY, Apple, intimissimi, TESLA, lululemon, NORDSTROM, Marine Layer, ARHAUS, allbirds, EVEREVE, BANANA REPUBLIC, LOUIS VUITTON

**TRADER JOE'S**

PROPOSED

# Signage Opportunities



SIGNANGE OPPORTUNITY

SIGNANGE OPPORTUNITY

NEW MONUMENT SIGN AT HARD CORNER

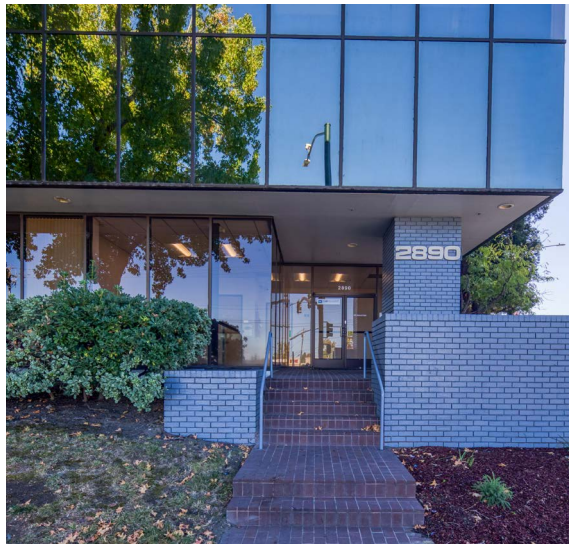
2890 NORTH MAIN

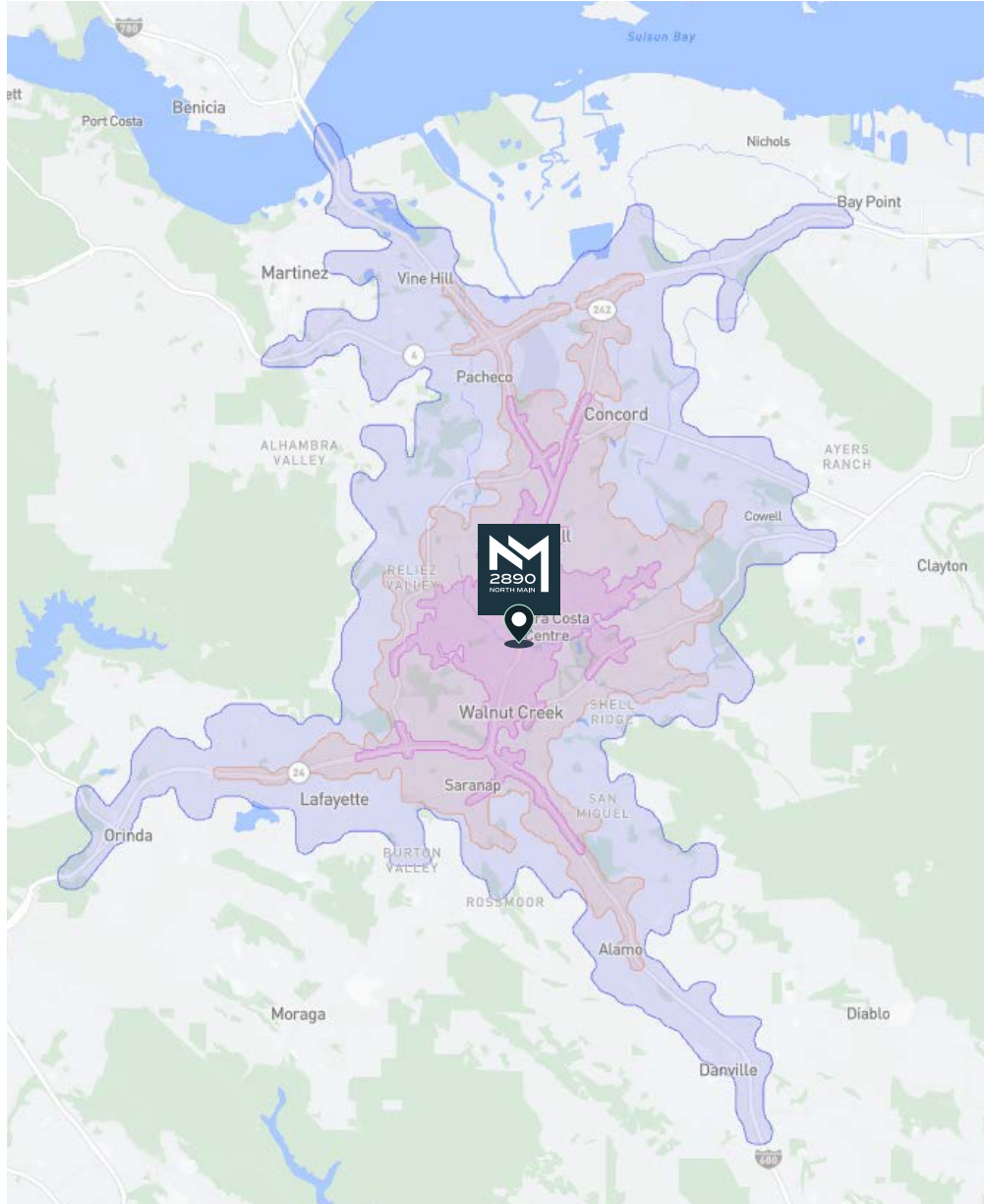
Anchor Tenant

Tenant Name

Tenant Name

EXTERIOR  
**Gallery**





DEMOGRAPHICS (2023)	5 Min	7 Min	10 Min
2023 Population	44,479	110,840	223,239
2028 Population (Estimated)	46,220	112,878	226,141
Median Age	40.5	40.2	42.3
Total Households	19,916	46,174	89,332
Average Household Size	2.19	2.37	2.47
Total Housing Units	21,582	49,105	94,098
Total Owner Occupied Housing Units	41.0%	46.6%	55.1%
Total Renter Occupied Housing Units	51.2%	47.4%	39.8%
Average Household Income	\$166,979	\$168,165	\$173,566
Median Household Income	\$125,050	\$120,661	\$121,121
Per Capita Income	\$74,969	\$69,893	\$69,875



# High Identity Retail Opportunity at Major Intersection

## WALNUT CREEK



**Matt Sweeney**

[msweeney@theeoniccompany.com](mailto:msweeney@theeoniccompany.com)

(408) 863-1444

CalDRE: 01746896

**Nicole Lyon**

[nlyon@theeoniccompany.com](mailto:nlyon@theeoniccompany.com)

(408) 400-7008

CalDRE: 01975898



CENTURY | URBAN