



Heavyweight Corridor
Port Adjacent Warehouse
8.46 Acre Parcel



148,572 SF AVAILABLE FOR LEASE

PREMIER WAREHOUSE DISTRIBUTION FACILITY

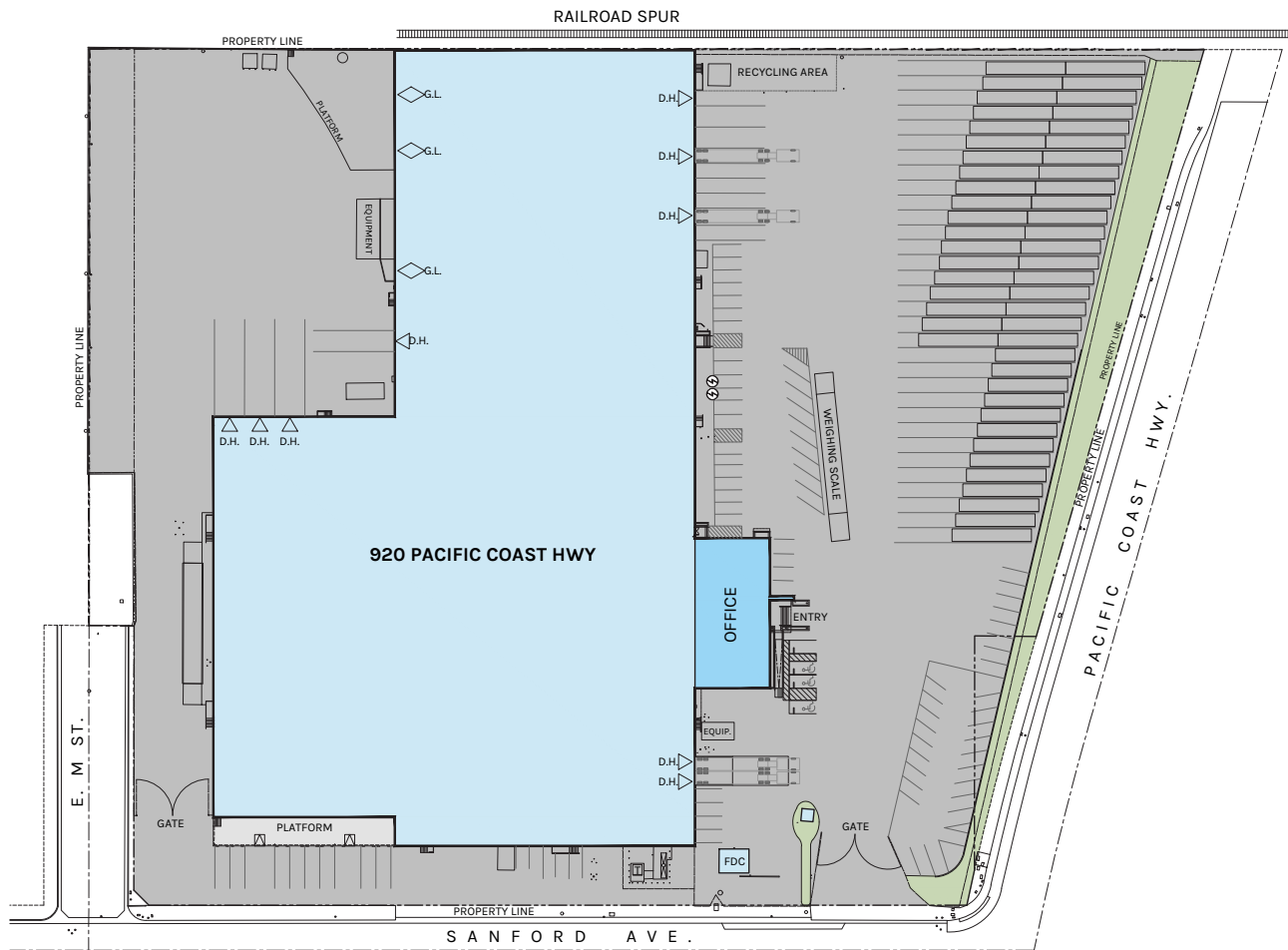
920 E. Pacific Coast Highway | Wilmington, CA





Property Highlights

- Heavyweight Corridor
- Port Adjacent Facility with Excess Land
- Secure Fenced Yard with up to 225' Turning Radius
- Heavy Power: 3000 AMPs, 277/480V
- 20' Clearance
- 9 DH Positions, 3 GL Doors
- 50+ Trailer Positions
- PCH Visibility and Frontage
- Truck Scales
- Sprinklered
- Refurbishment Underway



PLAN LEGEND	
	GRADE LEVEL DOOR SYMBOL
	DOCK HIGH DOOR SYMBOL
	EV CHARGING

LOT AREA: 368,524 (8.46 AC)

AUTO PARKING: ±77 SPACES
TRAILER PARKING: 50 (8'-6"X53')



SCALE: 1" = 80'-0"

WAREHOUSE
138,612 SF

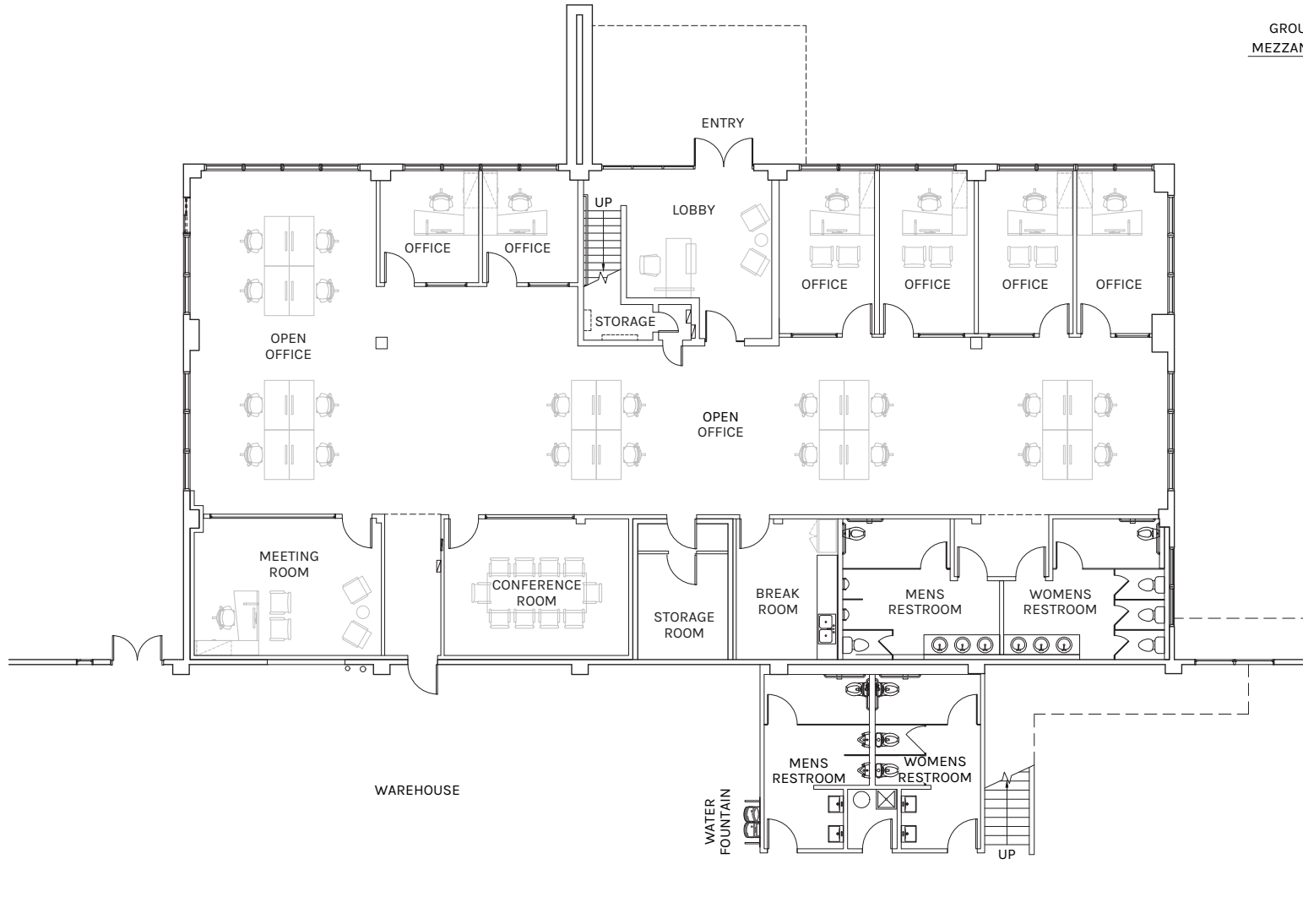
OFFICE
9,960 SF

TOTAL
148,572 SF

PLAN LAYOUT SUBJECT TO FIELD CONDITIONS AND MAY DIFFER FROM PLAN AS SHOWN. ALL INFORMATION PRESENTED ON THIS DRAWING IS PRESUMED TO BE ACCURATE, HOWEVER TENANT SHOULD VERIFY PERTINENT INFORMATION PRIOR TO COMMITTING TO A LEASE. ANY FURNITURE OR APPLIANCES SHOWN ON PLAN ARE FOR CONCEPT ONLY AND WILL BE TENANT PROVIDED.



WAREHOUSE: 138,612 SF
GROUND LEVEL OFFICE: 5,048 SF
MEZZANINE LEVEL OFFICE: 4,912 SF
TOTAL: 148,572 SF



WAREHOUSE
138,612 SF

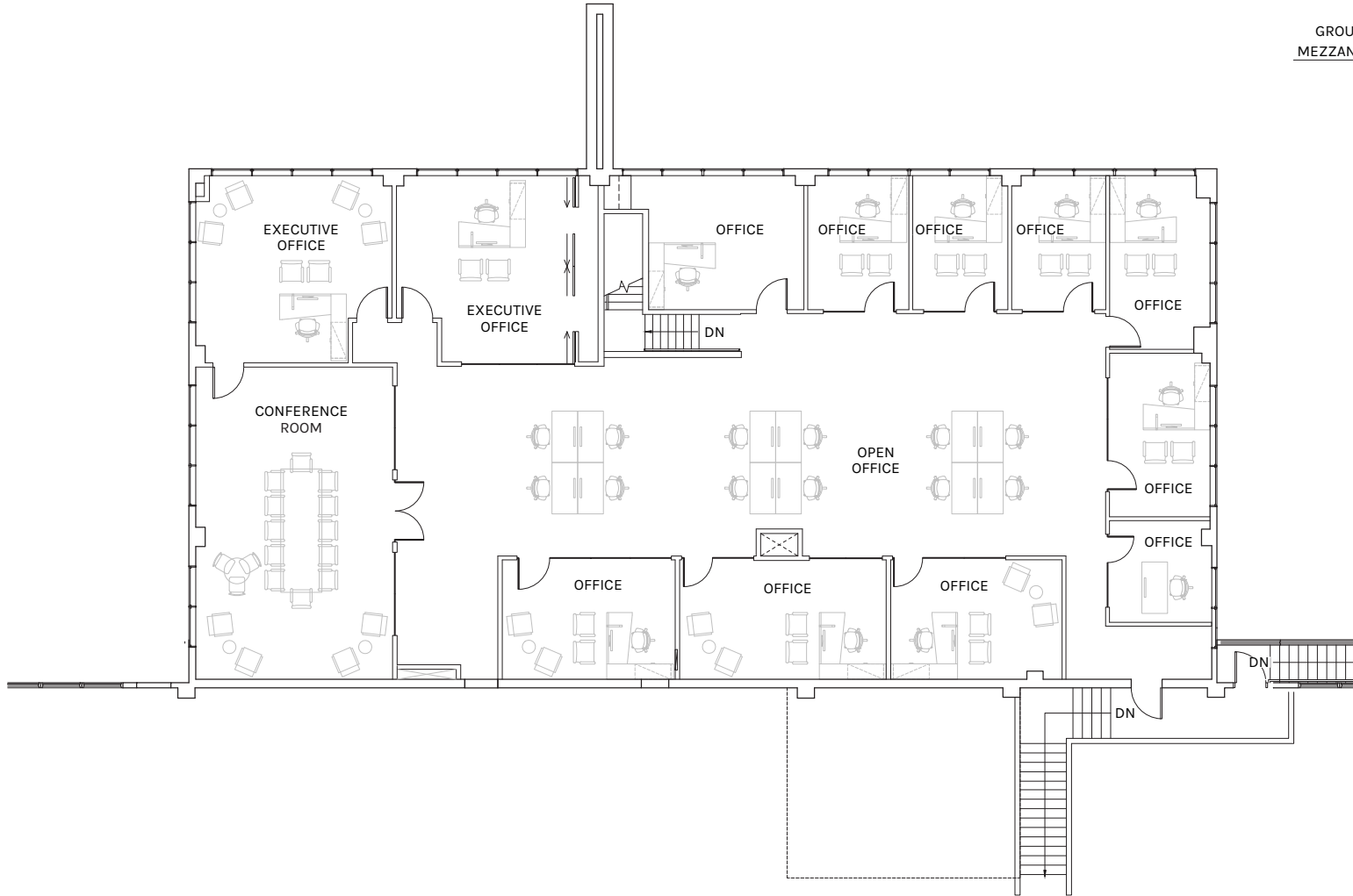
OFFICE
9,960 SF

TOTAL
148,572 SF

PLAN LAYOUT SUBJECT TO FIELD CONDITIONS AND MAY DIFFER FROM PLAN AS SHOWN. ALL INFORMATION PRESENTED ON THIS DRAWING IS PRESUMED TO BE ACCURATE, HOWEVER TENANT SHOULD VERIFY PERTINENT INFORMATION PRIOR TO COMMITTING TO A LEASE. ANY FURNITURE OR APPLIANCES SHOWN ON PLAN ARE FOR CONCEPT ONLY AND WILL BE TENANT PROVIDED.



WAREHOUSE: 138,612 SF
GROUND LEVEL OFFICE: 5,048 SF
MEZZANINE LEVEL OFFICE: 4,912 SF
TOTAL: 148,572 SF



SCALE: 1" = 50'-0"

WAREHOUSE
138,612 SF

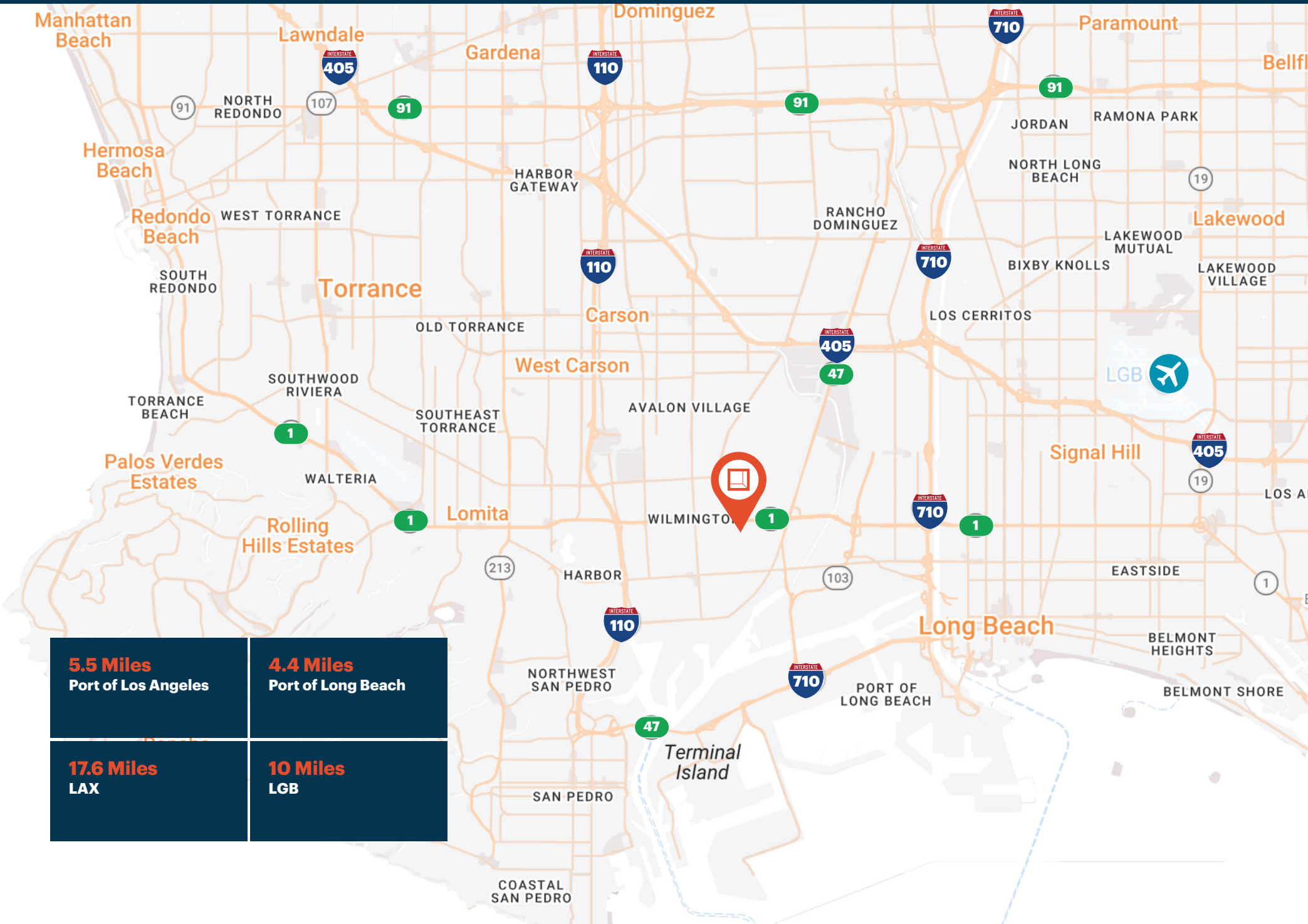
OFFICE
9,960 SF

TOTAL
148,572 SF

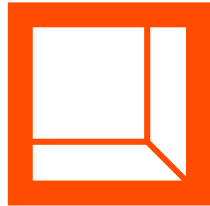
PLAN LAYOUT SUBJECT TO FIELD CONDITIONS AND MAY DIFFER FROM PLAN AS SHOWN. ALL INFORMATION PRESENTED ON THIS DRAWING IS PRESUMED TO BE ACCURATE, HOWEVER TENANT SHOULD VERIFY PERTINENT INFORMATION PRIOR TO COMMITTING TO A LEASE. ANY FURNITURE OR APPLIANCES SHOWN ON PLAN ARE FOR CONCEPT ONLY AND WILL BE TENANT PROVIDED.

Location

920 E. Pacific Coast Hwy



5.5 Miles Port of Los Angeles	4.4 Miles Port of Long Beach
17.6 Miles LAX	10 Miles LGB



**Rexford
Industrial**

Leasing Contacts

STEVE BOHANNON

Executive Managing Director

310 729 6957

steve.bohannon@cushwake.com

LIC #01086195

DAVE MACKENBACH

President | DMI Consulting

310 729 1200

dave@dmiconsulting.com

LIC #00859310

JAMES LATIMER

Senior Associate

310 748 2225

james.latimer@cushwake.com

LIC #02343659

