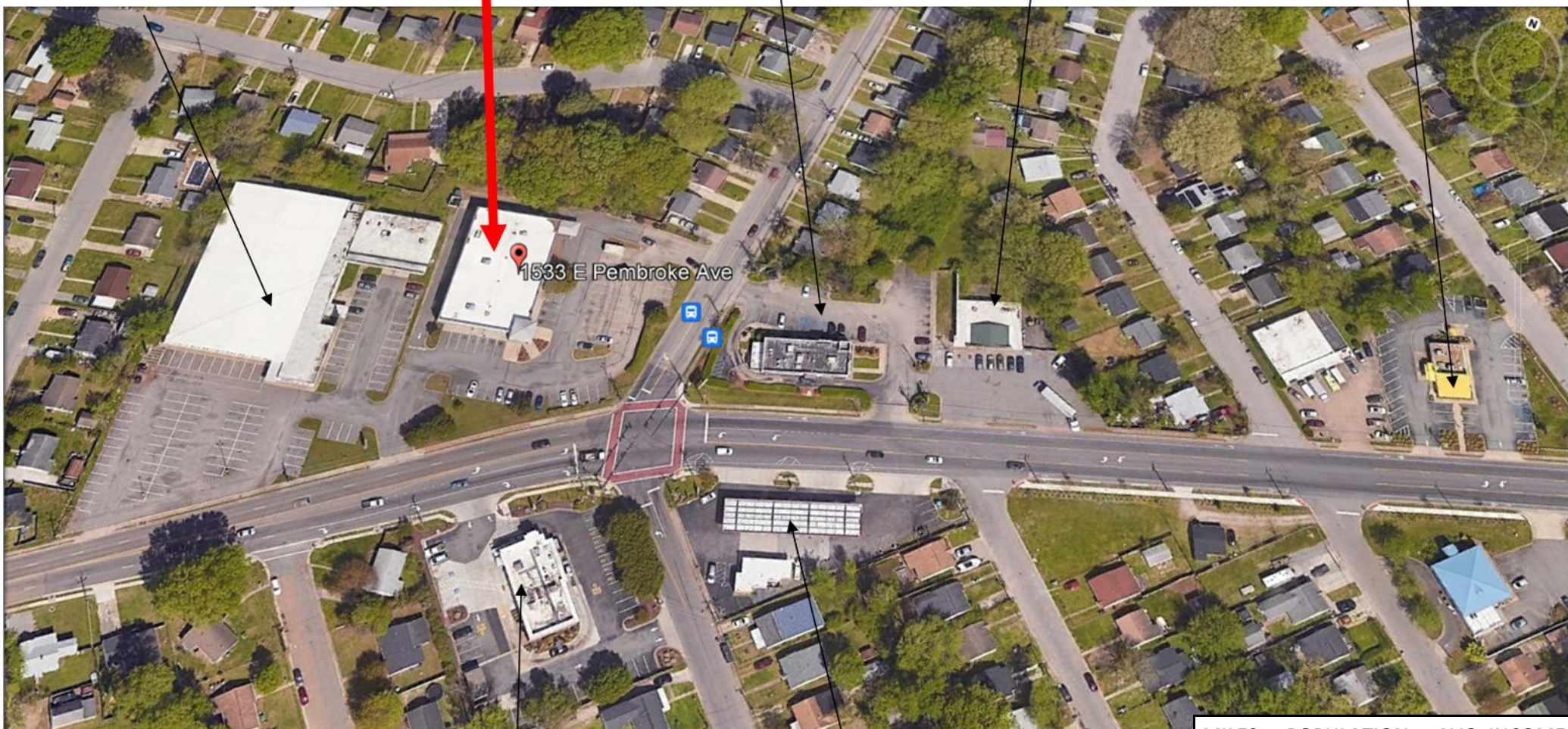


Former Rite Aid Available
 1533 East Pembroke Ave., Hampton, VA 23663



MILES	POPULATION	AVG. INCOME
1	13,819	\$71,287
3	61,824	\$84,928
5	100,035	\$82,118

Rite Aid w/ drive-thru

(recently closed / mint condition)

10,752 sq. ft. 84' x 128' Zoned: C-2

FOR RENT

1533 E. Pembroke Ave., Hampton, VA 23663



JCF 757-623-1062 ext. 213 (tel) / Attn: Lawrence / LAKEBARB4@aol.com



Fixture / Floor Plan
 Rite Aid Pharmacy
 1533 East Pembroke Ave., Hampton, VA 23663

GRIMES RD

FIRE EVACUATION PLAN

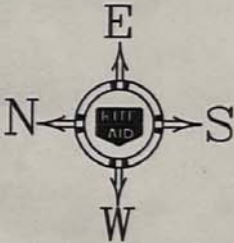
LEGEND

- ← PRIMARY MEANS OF EGRESS
- ↔ EMERGENCY EXIT
- ⊕ FIRE EXTINGUISHER LOCATIONS

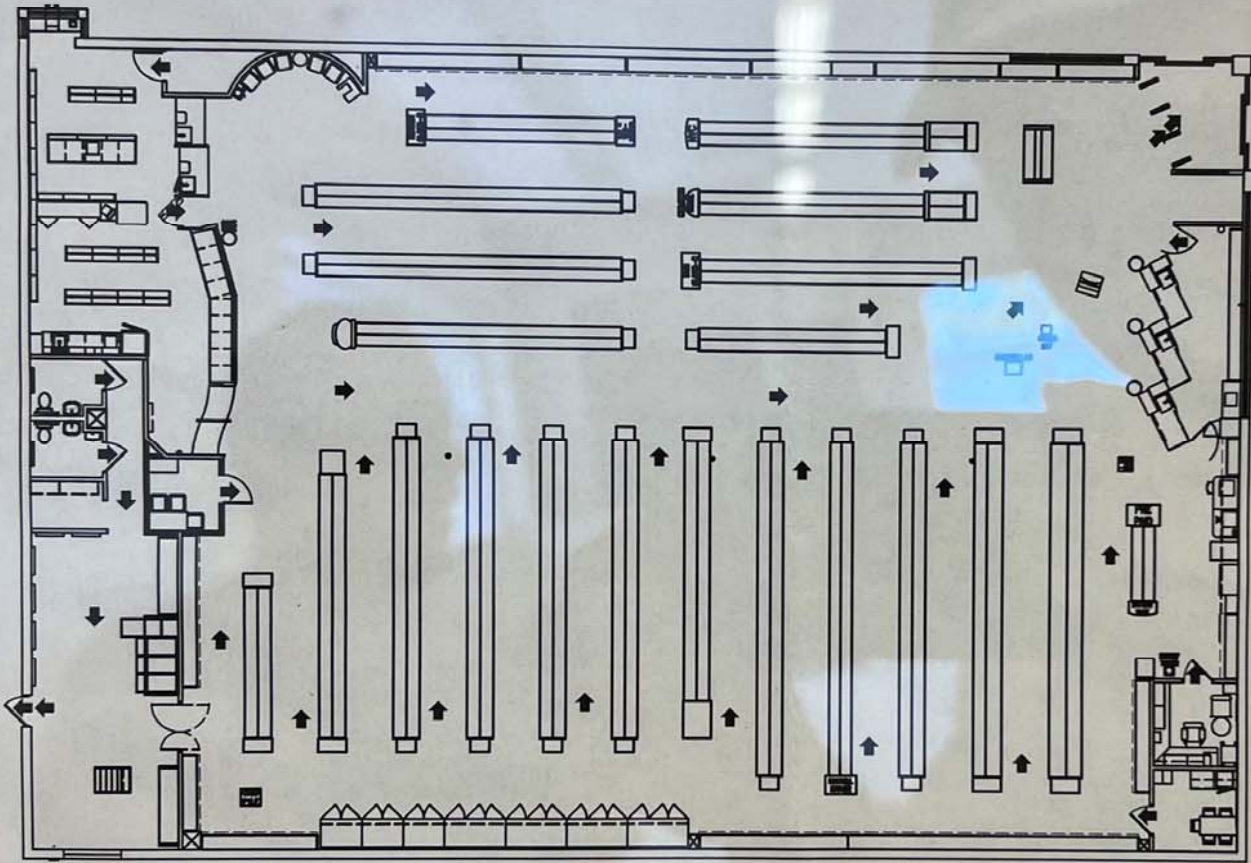
MANAGEMENT RESPONSIBILITIES

- 1) DESIGNATE USE OF FIRE EXTINGUISHERS
- 2) TOTAL HEAD COUNT OF EMPLOYEES

EAST PEMBROKE AVE



84'



128'

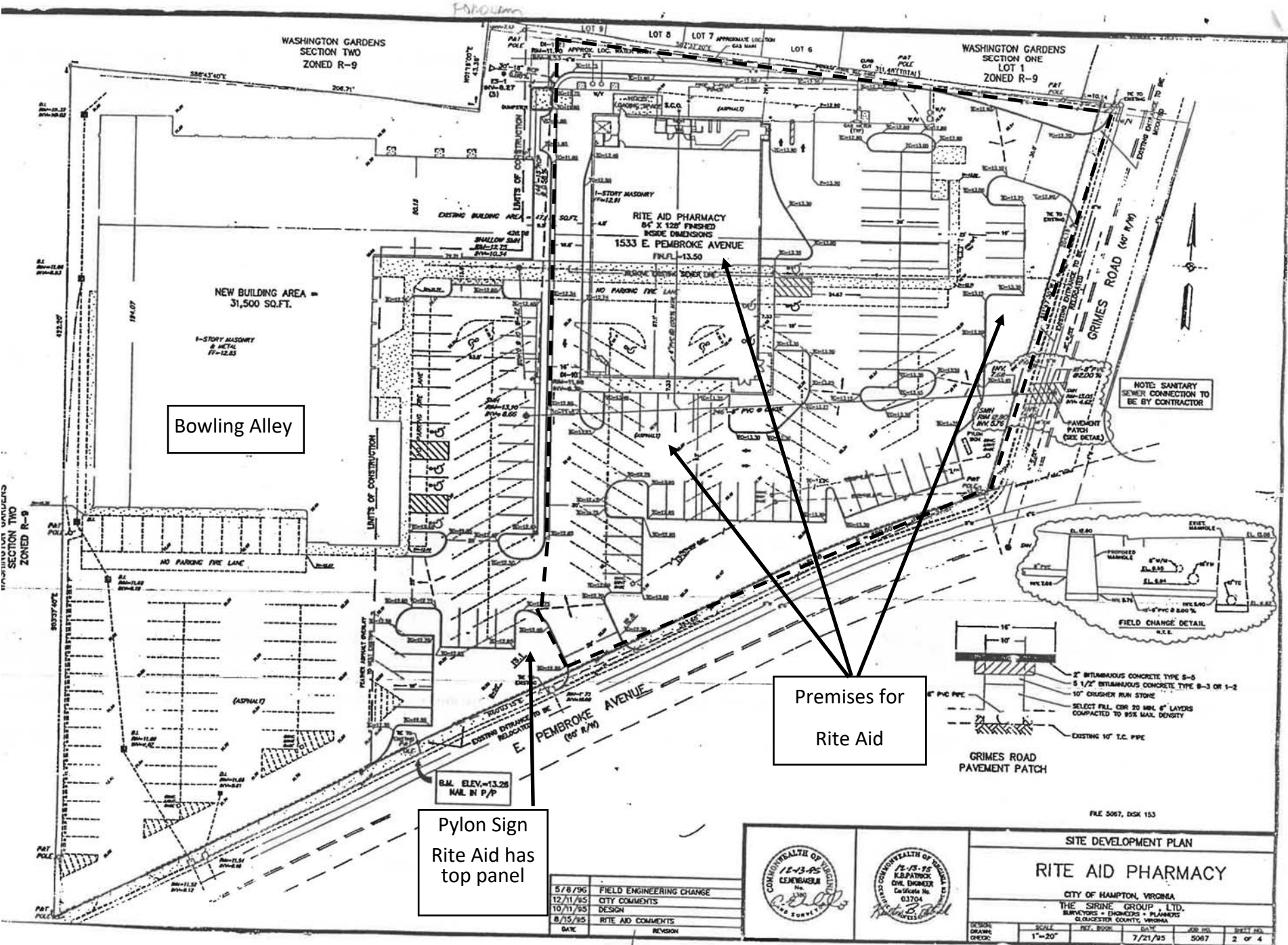
RITE AID

STORE PLANNING
 DEPARTMENT
 P.O. BOX 3165
 HARRISBURG, PA 17105
 (717) 761-2633

1889

1533 E PEMBROKE AVE
HAMPTON, VA

DRAWN BY: _____ DATE: 6/24/2013

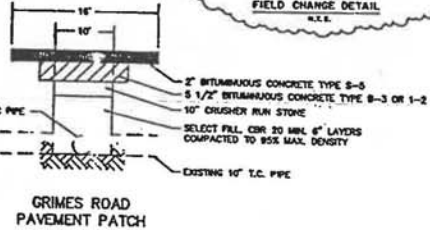
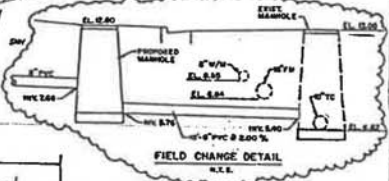


Bowling Alley

Premises for Rite Aid

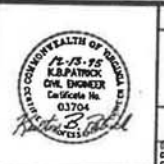
Pylon Sign
Rite Aid has top panel

NOTE: SANITARY SEWER CONNECTION TO BE BY CONTRACTOR



FILE 5067, DSK 153

DATE	REVISION
5/8/96	FIELD ENGINEERING CHANGE
12/11/95	CITY COMMENTS
10/11/95	DESIGN
8/15/95	RITE AID COMMENTS



SITE DEVELOPMENT PLAN

RITE AID PHARMACY

CITY OF HAMPTON, VIRGINIA
THE SHIRINE GROUP, LTD.
SURVEYORS • ENGINEERS • PLANNERS
GLoucester COUNTY, VIRGINIA

DESIGN CHECK:	SCALE:	REV. BOOK:	DATE:	JOB NO.:	SHEET NO.:
	1"=20'		7/21/95	5067	2 OF 4