

BOONE STREET SQUARE OFFICE

132 Boone Street
Jonesborough, TN 37659

Location

Just off E Jackson Blvd on Boone St in Downtown Jonesborough

Available for Lease

Suite 1: 811 SF office
\$13/SF/year NNN

Highlights

Reception/waiting area

Break room

Open work areas

Signage on Boone Street

Walking distance to restaurants, shops and entertainment in Historic Downtown Jonesborough

Across from post office, water dept and fire dept

Proximal to Food City and Lowe's Home Improvement

Traffic Counts

E Jackson Blvd: 29,701 (2022)

Boone St: 5,956 (2022)

Demographics

(2023 Est.)	3 mile	5 mile	10 mile
Population	14,105	42,229	143,193
Median HH Income	\$70,980	\$60,234	\$57,715
Median Age	44.4	43.4	41.8

Contact

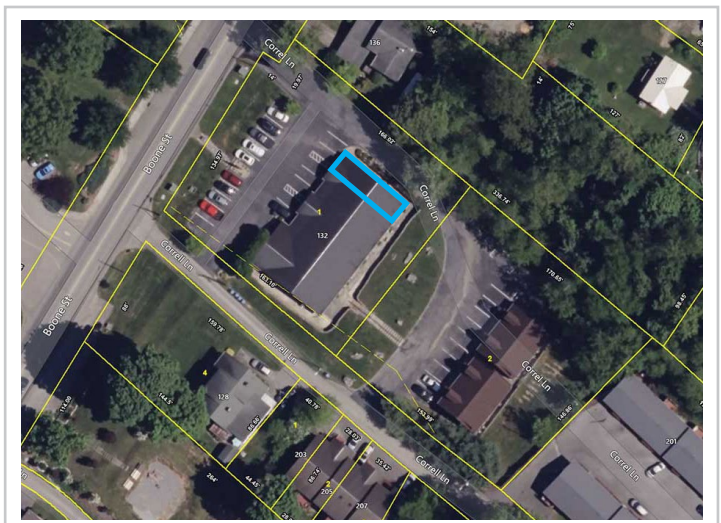
Shannon K. Castillo

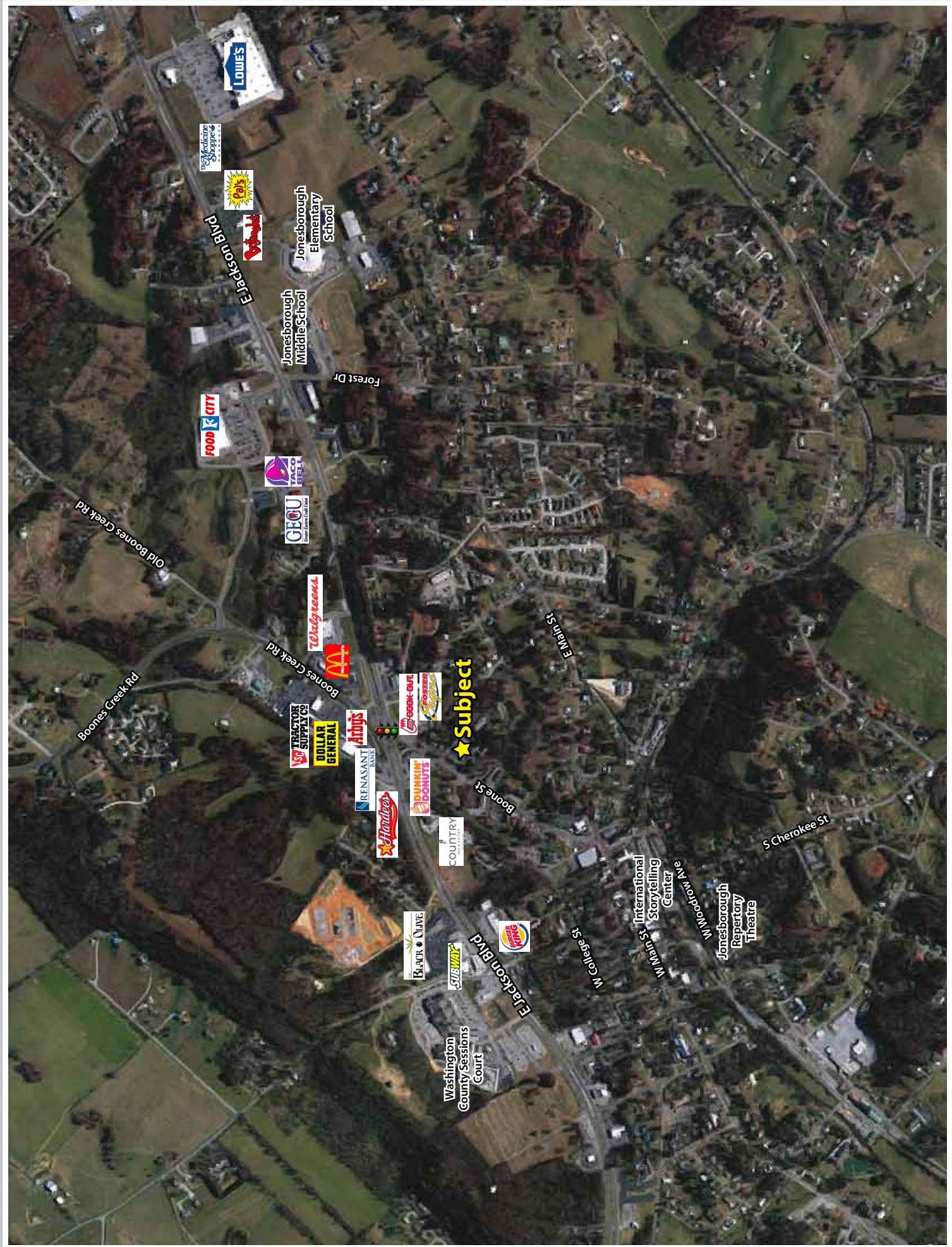
Broker

shannon@mitchcox.com

📞 423-282-6582 | 📠 423-282-5903

www.mitchcox.com





LOWE'S

Early Action
Stamps
On
Cards

Wendy's

Jonesborough
Elementary
School

Jonesborough
Middle School

FOOD CITY

WALSH
HIRE

CFICU
COMMUNITY FEDERAL CREDIT UNION

Walgreens

McDonald's

★ Subject

TRUCKERS
SUPPLY US

DOLLAR
GENERAL

Amij's

RENASANT
BANK

Hardee's

BBQ-BUFF

POZZI'S

DUNKIN'
DONUTS

COUNTRY

BLACK & OLIVE

SUBWAY

Washington
County Sessions
Court

PINE
APPLE

International
Storytelling
Center

Jonesborough
Repertory
Theatre

Boones Creek Rd

Jackson Blvd

Forest Dr

Edwin St

Boone St

S Cherokee St

W College St

W Main St

W Woodrow Ave

Jackson Blvd



MITCH COX
REALTOR, INC.

2304 Silverdale Drive, Suite 200, Johnson City, TN 37601
423-282-6582 (o) 423-282-5903 (f) www.mitchcox.com