



Mixed-use Development Site For Sale

- **±1,389 acres for mixed-use development** with close proximity to CR 561, CR 448, and Close to HW 19 and 441 and The Florida Turnpike.
- Nearly **1,400 contiguous acres on Lake Dora with more than 2 miles of direct lake frontage**
- The property has the potential to be developed into **2,500 dwelling units** and **2,500,000 square feet** of commercial, industrial and lodging uses.

[View Property Website](#)

[View Principal Confidentiality Agreement](#)



Ideal Mixed-use location



Direct access to Lake Dora



Florida is booming

For further information

Jay Ziv, CCIM, SIOR, ALC
Principal
+1 305 498 2200
jay.ziv@avisonyoung.com

Michael T. Fay
Chairman, U.S. Capital Markets Group Executive
Committee, Principal, Managing Director – Miami
+1 305 447 7842
michael.fay@avisonyoung.com

Brian C. de la Fé
Principal
305 476 7134
brian.delafe@avisonyoung.com

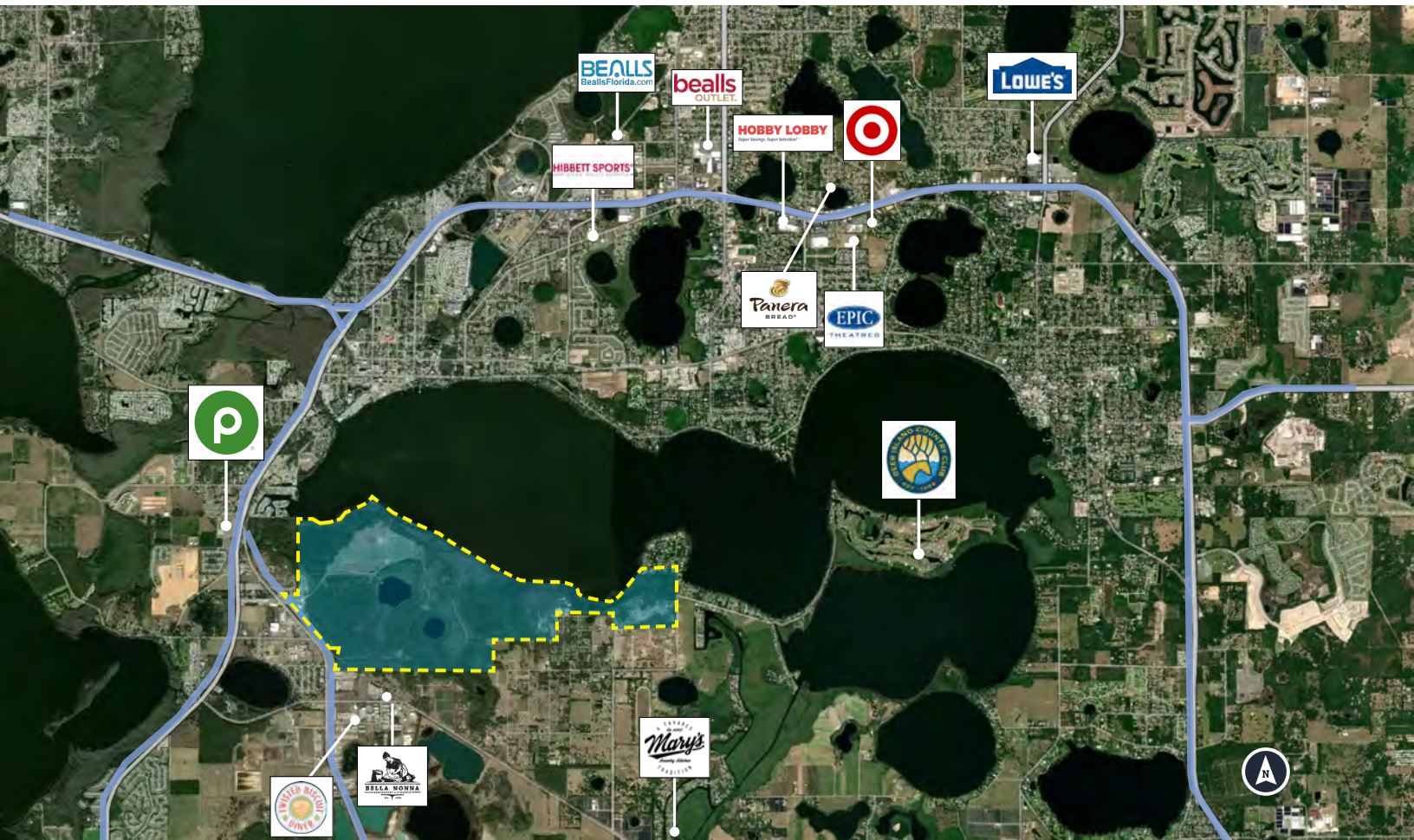
For Sale

Far Reach Ranch
± 1,389 acre development site



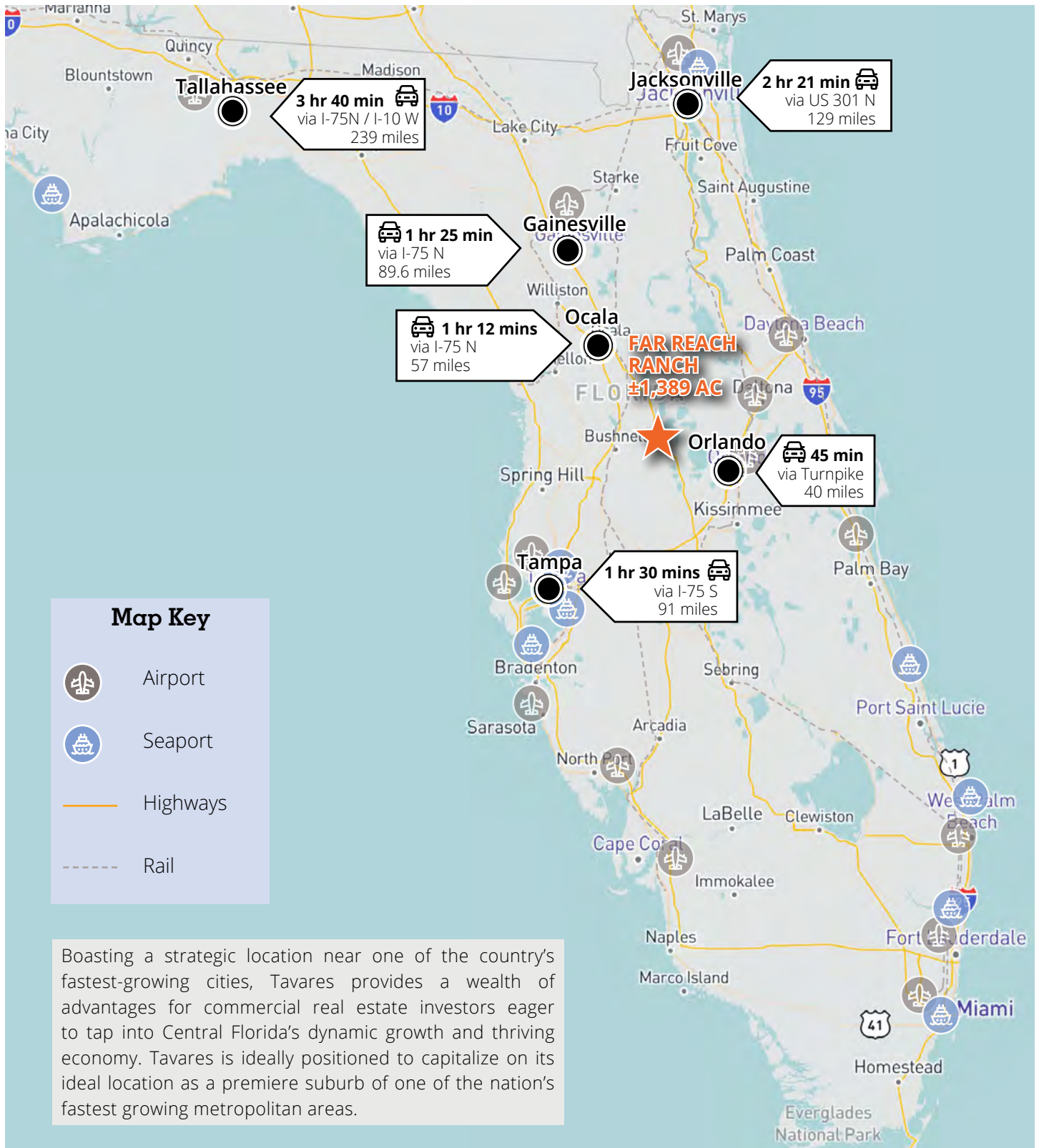
For Sale

Far Reach Ranch
± 1,389 acre development site



For Sale

Far Reach Ranch
± 1,389 acre development site



Jay Ziv, CCIM, SIOR, ALC
Principal
+1 305 498 2200
jay.ziv@avisonyoung.com

Michael T. Fay
Chairman, U.S. Capital Markets Group Executive Committee, Principal, Managing Director – Miami
+1 305 447 7842
michael.fay@avisonyoung.com

Brian C. de la Fé
Principal
305 476 7134
brian.delafe@avisonyoung.com