

FULLY FURNISHED/MOVE-IN READY OFFICE SPACE AVAILABLE

LONG TERM DIRECT DEAL WITH OWNERSHIP POSSIBLE
LEASE/SUBLEASE RUNS THROUGH JANUARY 31, 2032



11,865 to 40,000 RSF
FARMINGTON HILLS OFFICENTER
27555 Executive Drive, Farmington Hills, MI 48331

- *PLUG & PLAY FRESHLY BUILT-OUT CLASS A OFFICE SPACE, NEW FURNITURE, AND FIXTURES ARE IN PLACE*
- *APPROXIMATELY 11,865 R.S.F. ON THE 2ND FLOOR AND 28,135 R.S.F. ON THE 3RD FLOOR*
- *PRIME FARMINGTON HILLS LOCATION*
- *OWNERSHIP IS OPEN TO A DIRECT DEAL TO CREATE LONG-TERM TENANCY SOLUTION*
- *SIGNAGE AVAILABLE*
- *SUPERIOR OWNERSHIP!*



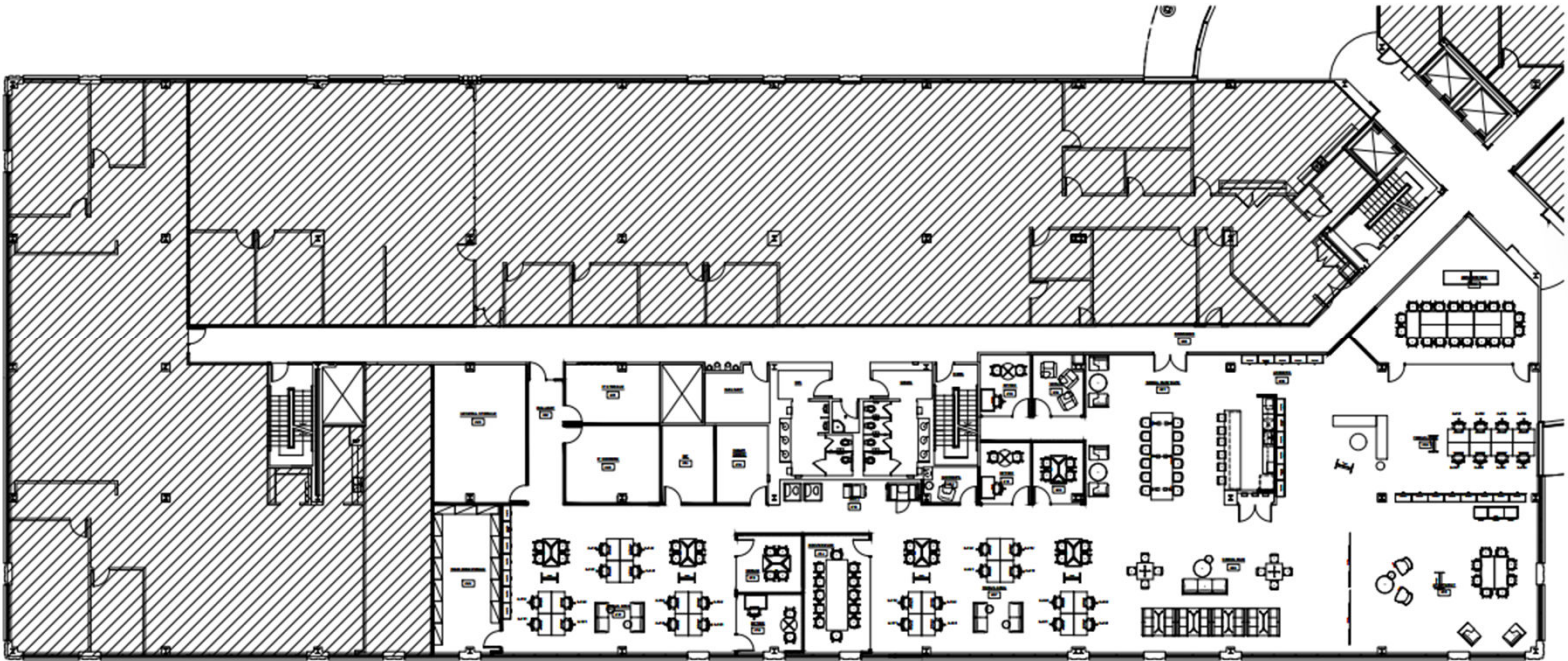
Contact: Matthew B. Fenster, CCIM, MCR
Direct Phone: 248-263-0137
E-mail: mfenster@etkinllc.com



150 W. Second Street, Suite 200
Royal Oak, MI 48067
Phone: 248-358-0800 Fax: 248-358-2180
www.EtkinCare.com

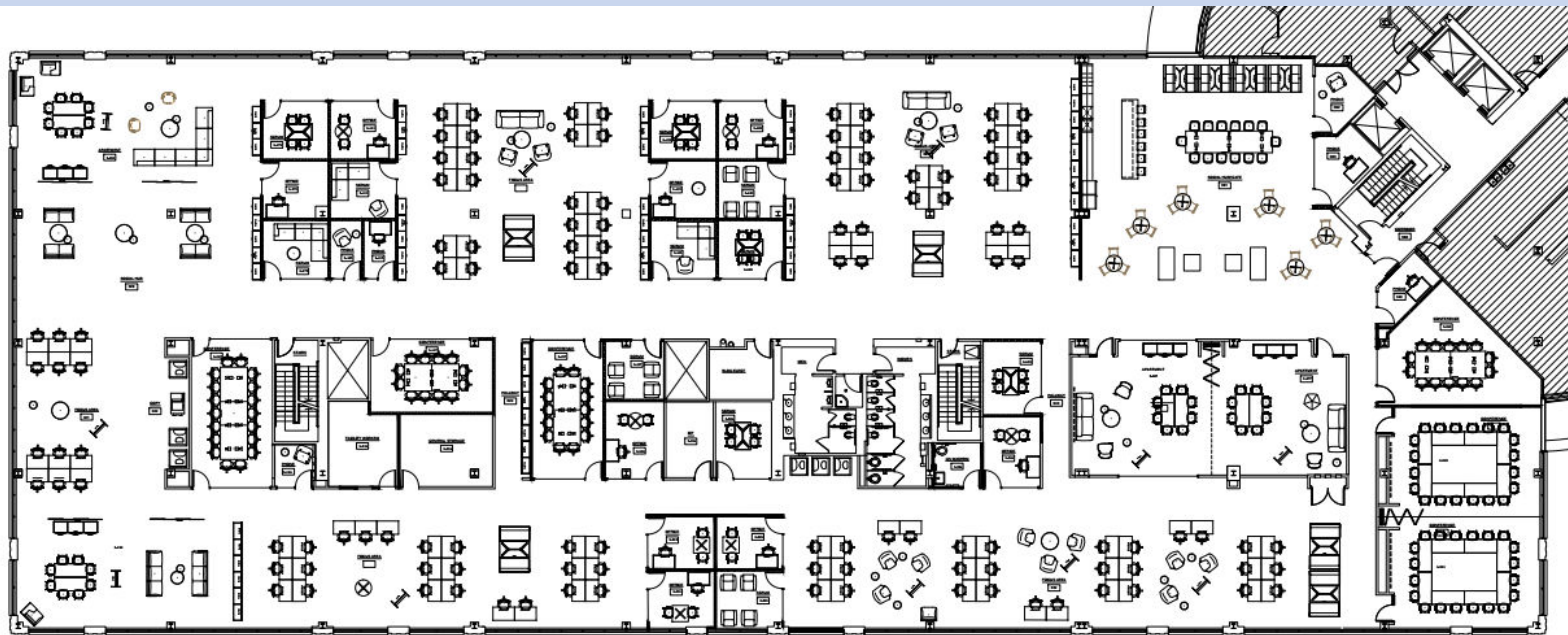
Second Floor Plan

Approximately 11,865 r.s.f.



Third Floor Plan

Approximately 28,135 r.s.f.



The information contained in this document has been obtained from sources deemed reliable. We do not, however, guarantee its accuracy. All information should be verified prior to lease.



The information contained in this document has been obtained from sources deemed reliable. We do not, however, guarantee its accuracy. All information should be verified prior to lease.



The information contained in this document has been obtained from sources deemed reliable. We do not, however, guarantee its accuracy. All information should be verified prior to lease.



The information contained in this document has been obtained from sources deemed reliable. We do not, however, guarantee its accuracy. All information should be verified prior to lease.



The information contained in this document has been obtained from sources deemed reliable. We do not, however, guarantee its accuracy. All information should be verified prior to lease.



The information contained in this document has been obtained from sources deemed reliable. We do not, however, guarantee its accuracy. All information should be verified prior to lease.