

COMMERCIAL BUILDING FOR SALE

102 N 7TH STREET
CORDELE, GA 31015
CRISP COUNTY

±8,952 SF

ASKING PRICE:
\$225,000



BO ELLIOTT C: 478.718.2049
BELLIOTT@THESUMMITGROUPMACON.COM
4124 ARKWRIGHT ROAD, SUITE 1, MACON, GA 31210
O: 478.750.7507
WWW.THESUMMITGROUPMACON.COM



PROPERTY INFORMATION

- ±8,952 SF commercial building with investment opportunity great for lofts, retail, office, etc...
- Month to month tenants in place
- The building has two new five-ton HVAC units and a new TPO roof installed February 2025
- Cordele City Taxes - \$225.27
- Crisp County Taxes - \$505.00
- Built in 1889, housed the first national bank until 1938



102 N 7TH STREET
CORDELE, GA 31015
CRISP COUNTY



TRAFFIC COUNT & DEMOGRAPHICS

- Traffic Count (GDOT 2023:)
E 16th Avenue – 12,800 VPD

102 N 7th Street - Cordele, GA

POPULATION	1 MILE	3 MILE	5 MILE
2025 POPULATION	5,306	12,429	14,606
2030 ESTIMATED POPULATION	5,010	11,763	13,813
HOUSEHOLDS	1 MILE	3 MILE	5 MILE
2025 HOUSEHOLDS	2,185	5,209	6,024
2030 HOUSEHOLD ESTIMATES	2,083	4,982	5,755
HOUSEHOLD INCOME	1 MILE	3 MILE	5 MILE
2025 HH INCOME	\$52,906	\$58,661	\$62,487
2030 HH INCOME ESTIMATE	\$57,775	\$64,360	\$68,649

AVERAGE INCOME POPULATION HOUSEHOLDS UNEMPLOYMENT LABOR FORCE



\$58,661



12,429



5,209



6.1%

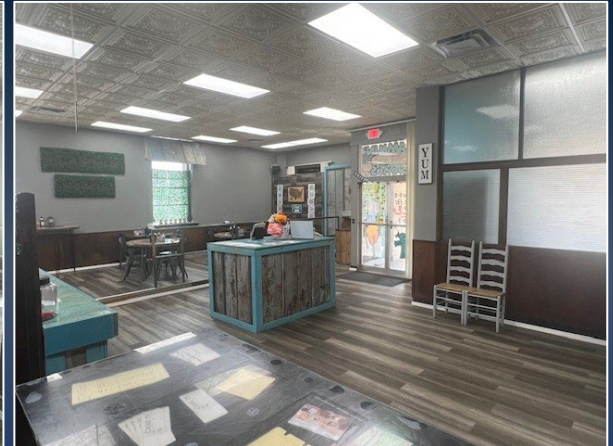
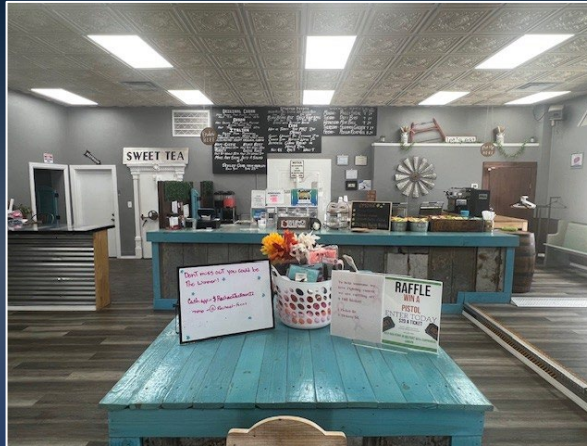


8,112

**102 N 7TH STREET
CORDELE, GA 31015
CRISP COUNTY**



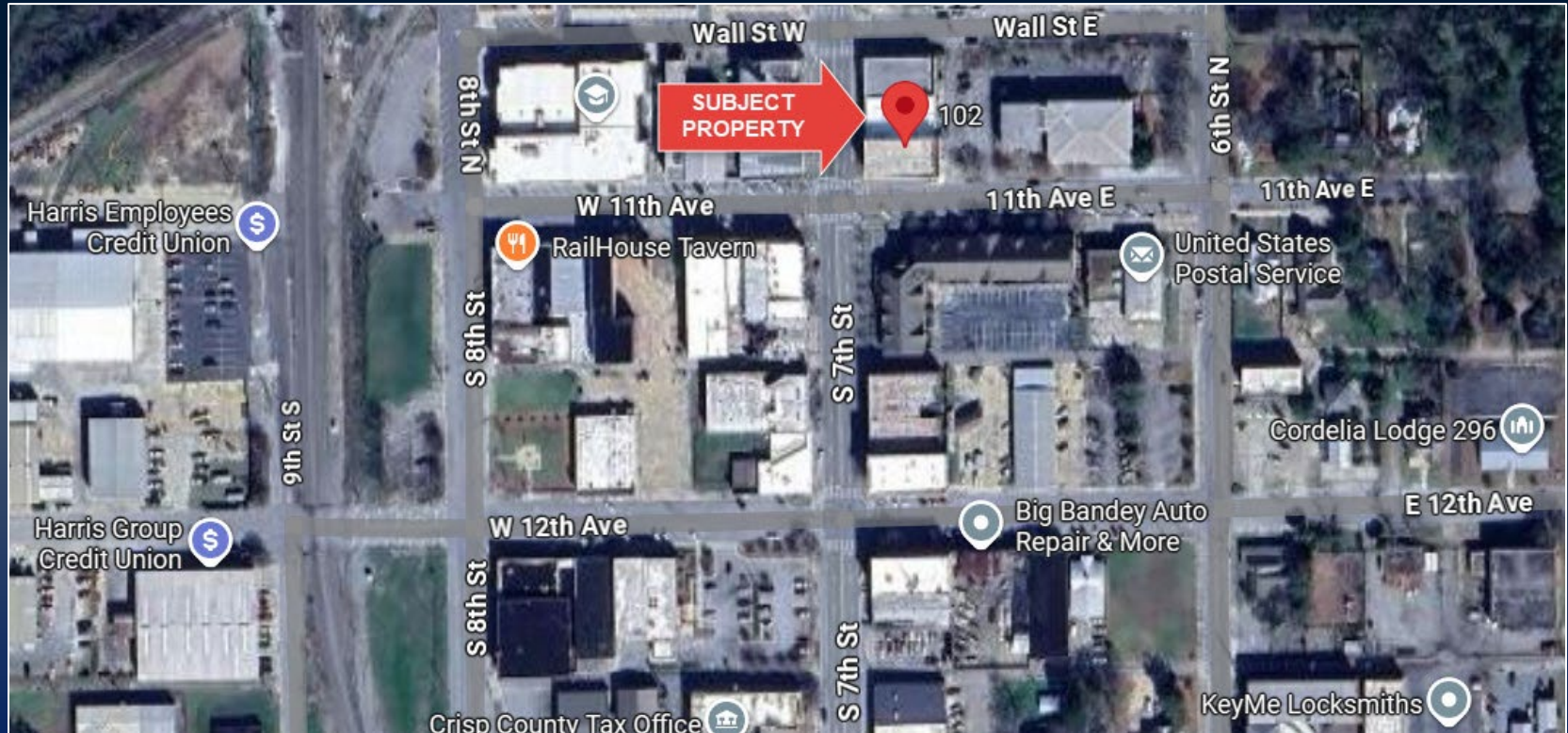
PROPERTY PHOTOS



102 N 7TH STREET
CORDELE, GA 31015
CRISP COUNTY



MAP



The information contained herein has been compiled from various sources, both private and public. It is accurate and complete only to the extent to which The Summit Group has been able to ascertain from third party sources. As such, no warranty or guarantee is given or implied with regard to the accuracy or completeness of any information contained herein. Any interested party shall be required to conduct its own due diligence and investigations to verify, review, audit, or otherwise insure the information contained herein.

