



RETAIL SPACE FOR LEASE

446-456 E DUNDEE AVE PALATINE , IL 60067



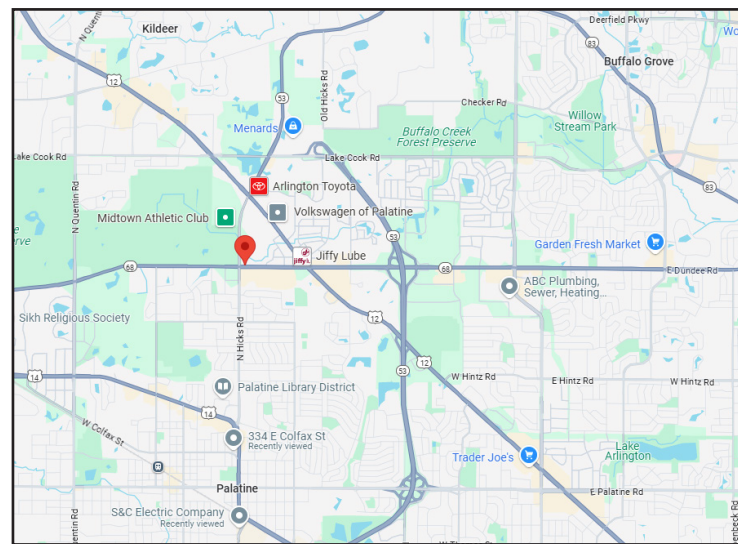
BUILDING FEATURES:

- 1,350 SF Quality Retail Space Available 9/1/25
- Heavy Traffic counts over 30,300 vehicles per day
- Close proximity to shopping and dining
- Located on busy Dundee Rd just East of Quentin Road
- Over 257,000 consumers in a 5 mile radius
- 24-hour tenant access & tenant controlled HVAC
- Ideal for retail, service or office users
- Join existing tenants Domino's Pizza & Chiropractor

- Tenant Signage on busy Dundee Road
- Excellent Visibility
- See www.chicagolandcommercial.com for links to 3-D Virtual Tours for each space!!!
- **Rental Rate: \$17.00-\$18.50 PSF NET + Pass throughs**

AVAILABLE SPACE:

SUITE	SIZE (SF)	Rent	Available
448	1,350 SF		10/1/25



FOR MORE INFORMATION:

RANDY OLCZYK
 Direct: 847.246.9611
randy@chicagolandcommercial.com

TOM CALLAHAN
 Direct: 847.246.9636
Tom@chicagolandcommercial.com



Chicagoland
Commercial
 REAL ESTATE

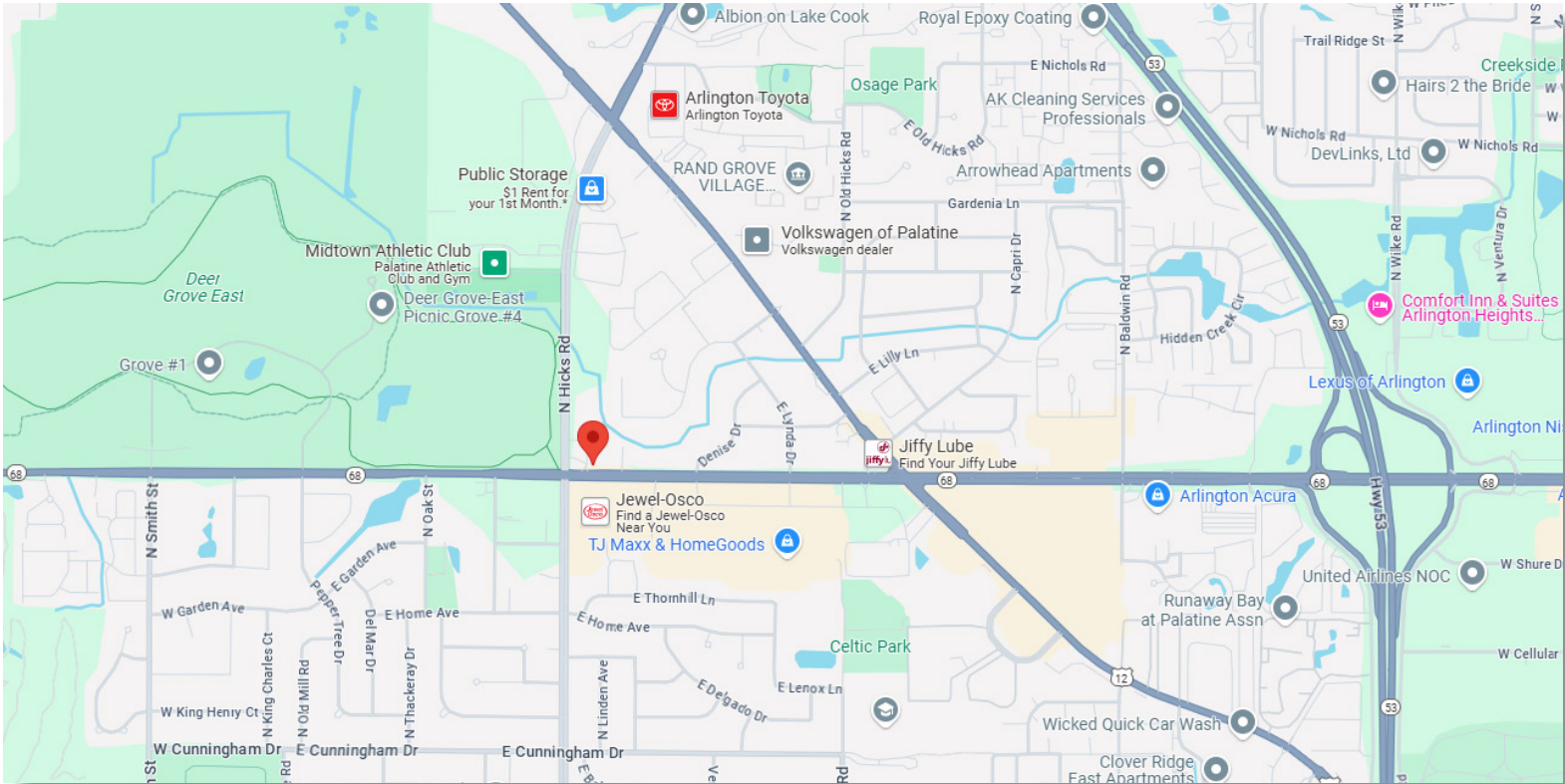
4811 Emerson Ave Suite 112, Palatine, IL



RETAIL SPACE FOR LEASE

446-456 E DUNDEE AVE PALATINE , IL 60067

AREA MAPS

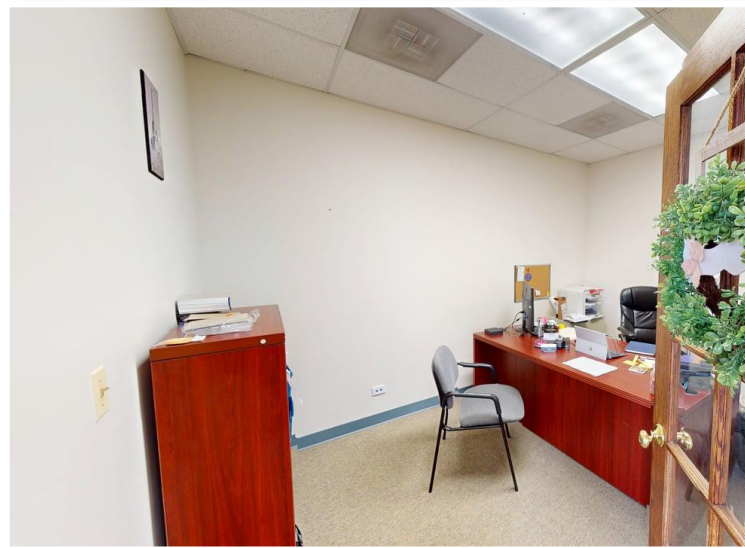
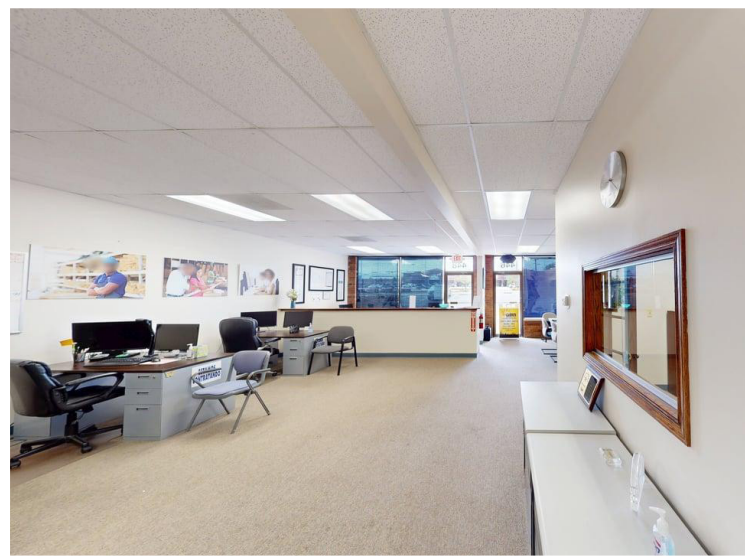
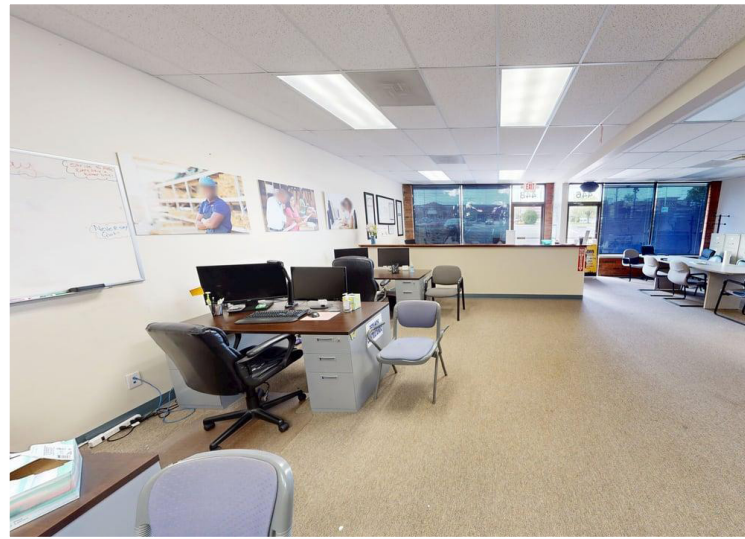




RETAIL SPACE FOR LEASE

446-456 E DUNDEE AVE PALATINE , IL 60067

BUILDING PHOTOGRAPHS

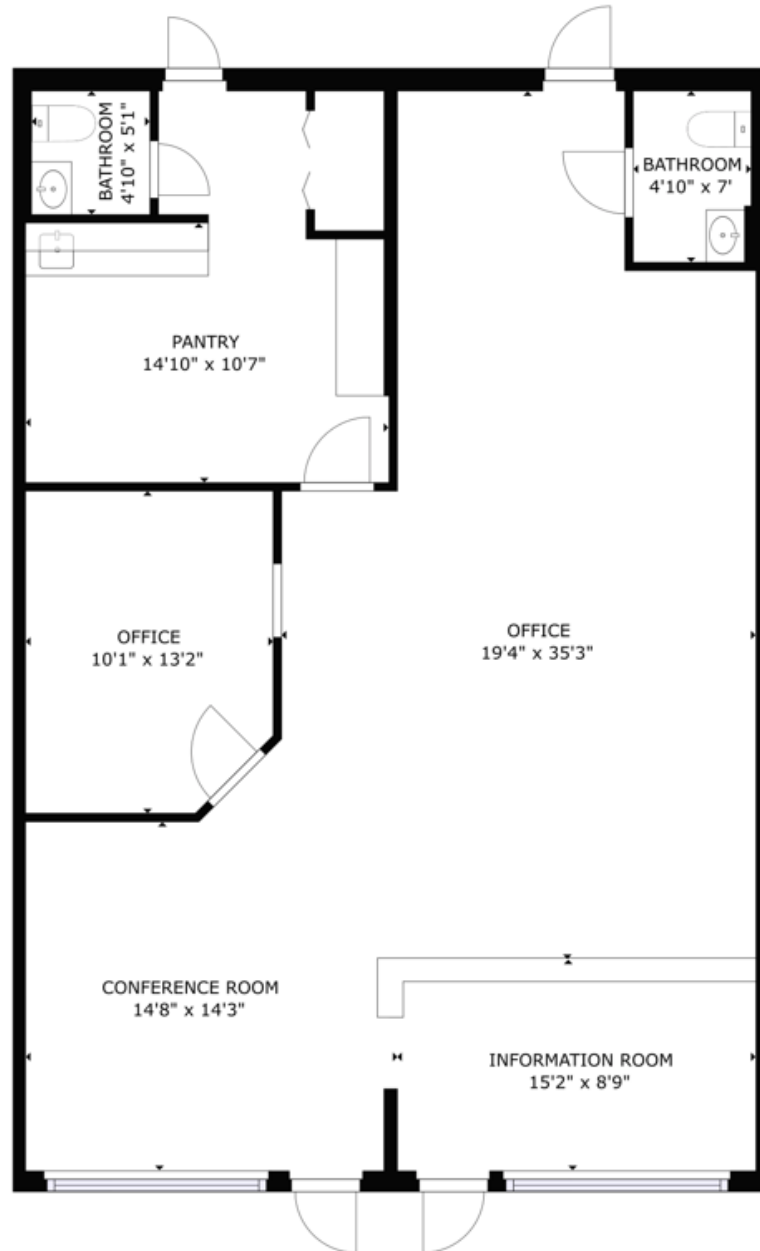




RETAIL SPACE FOR LEASE

446-456 E DUNDEE AVE PALATINE , IL 60067

FLOOR PLAN 448 E DUNDEE (1,350 SF)



Scan the QR Code or click [here](#)
for a 3-D Virtual Tour
of the space!

