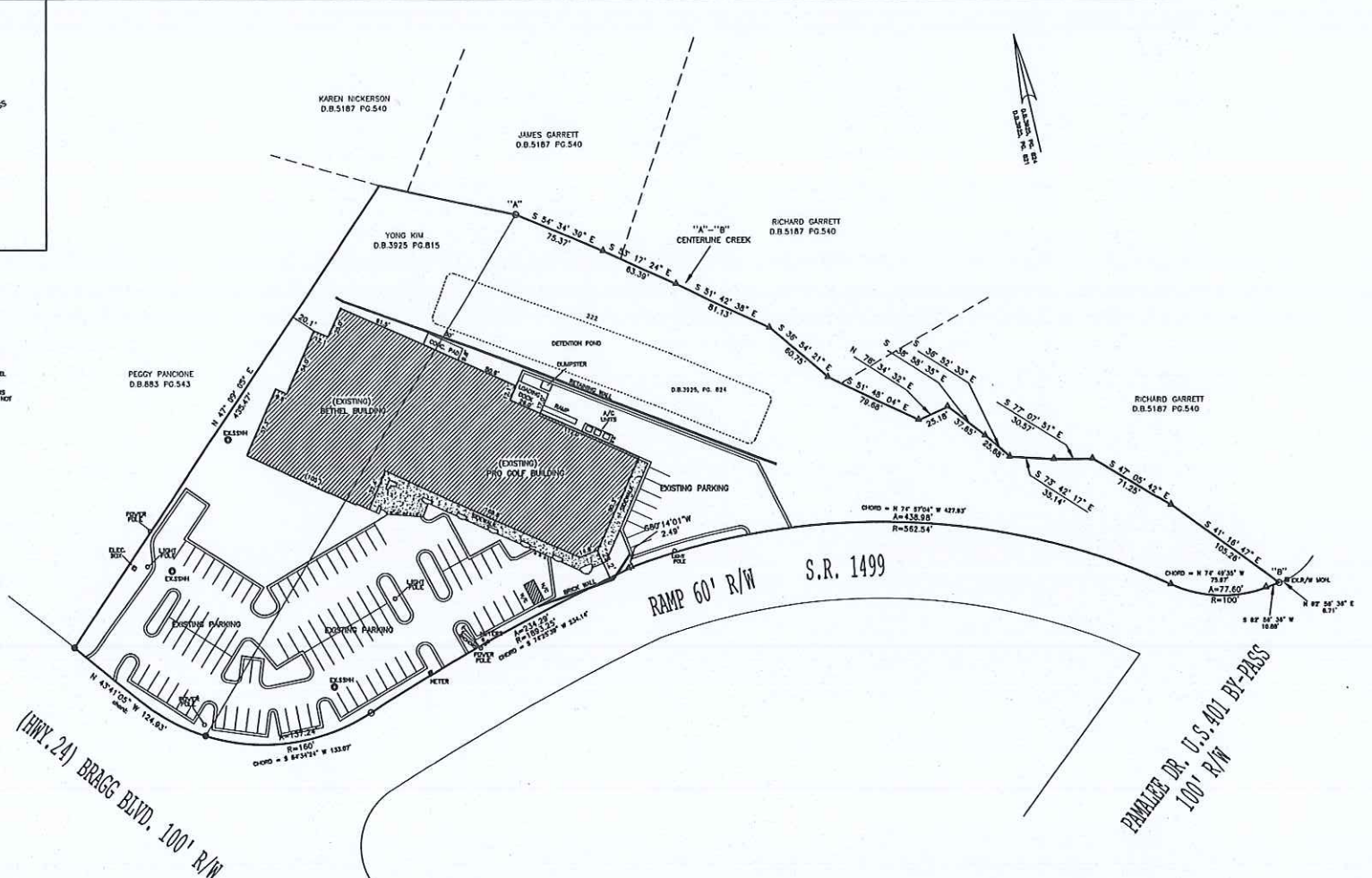


VICINITY MAP-- N.T.S.

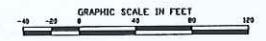
- NOTES:**
- 1) 20' DED C-3
  - 2) REWORK AND 2' FROM (TYP) 15' DED (TYP) 20' DED
  - 3) BEARINGS AND DISTANCES BETWEEN POINTS "A" & "B" FOLLOW THE CENTER OF A CREEK.
  - 4) THIS MAP REFLECTS A PREVIOUS UNRECORDED SURVEY PERFORMED BY GEORGE LOYD IN FEBRUARY 1992. HOWEVER, A PORTION OF A PORTION OF HIS SURVEY PERFORMED IN JULY 2000 BY MOORHAN, KIZER & REITZEL CORROBORATED THE EXISTING SURVEY.
  - 5) THE BEARINGS AND DISTANCES ALONG THE CREEK ON THIS PLAN WERE TAKEN FROM THE EARLIER SURVEY AND WERE NOT FIELD CHECKED BY MOORHAN, KIZER & REITZEL, INC.

- LEGEND**
- △ ANGLE POINT
  - EXISTING IRON PIN
  - SET IRON PIN
  - ▬ EXISTING CONCRETE MONUMENT
  - SURVEYED LINE
  - - - - - LINE NOT SURVEYED



EXISTING SURVEY OF  
**BETHEL INTERNATIONAL**  
 PROPERTY OF  
**YONG KEE KIM**  
 (FORMERLY PART OF W.C. BROWN ESTATE)

CROSS CREEK TWP. CUMBERLAND CO., N.C.  
 SCALE: 1"= 40'  
 JULY, 2002  
 UPDATED 6/19/03



MOORHAN, KIZER & REITZEL, INC. 115 BROADFOOT AVE. FAYETTEVILLE, N.C.  
 PHONE (910) 484-3191 FAX (910) 484-0388



