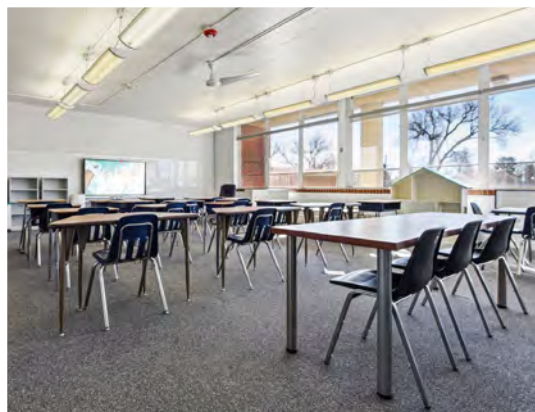


AVAILABLE FOR LEASE



38,782 SF Education Facility for Lease in Lakewood



Katie Hummer
katie@kincommercial.com
(303) 870-3343

Tom Omdal
tom@kincommercial.com
(573) 881-4363

1100 Upham Street, Lakewood, CO 80214
(Formerly Wellspring Catholic Academy of St. Bernadette)

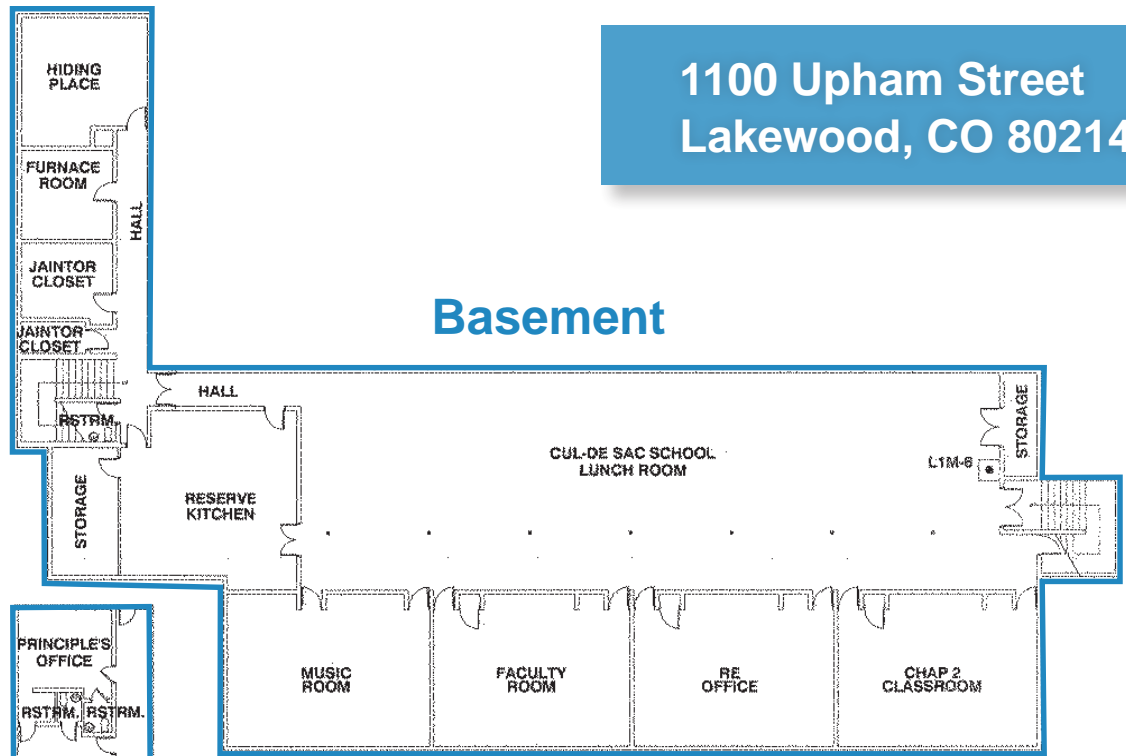
- Turnkey for K-8 with "E" Occupancy and available now
- 18 classrooms, library with stage, gym, cafeteria, and offices
- 2 classrooms recently licensed for early childhood education
- Large outdoor play area with several basketball goals and playground area, also a separate baseball field
- Two blocks from 13th/Wadsworth Light Rail station
- Easy access from 6th Avenue

Contact Broker for Lease Rate

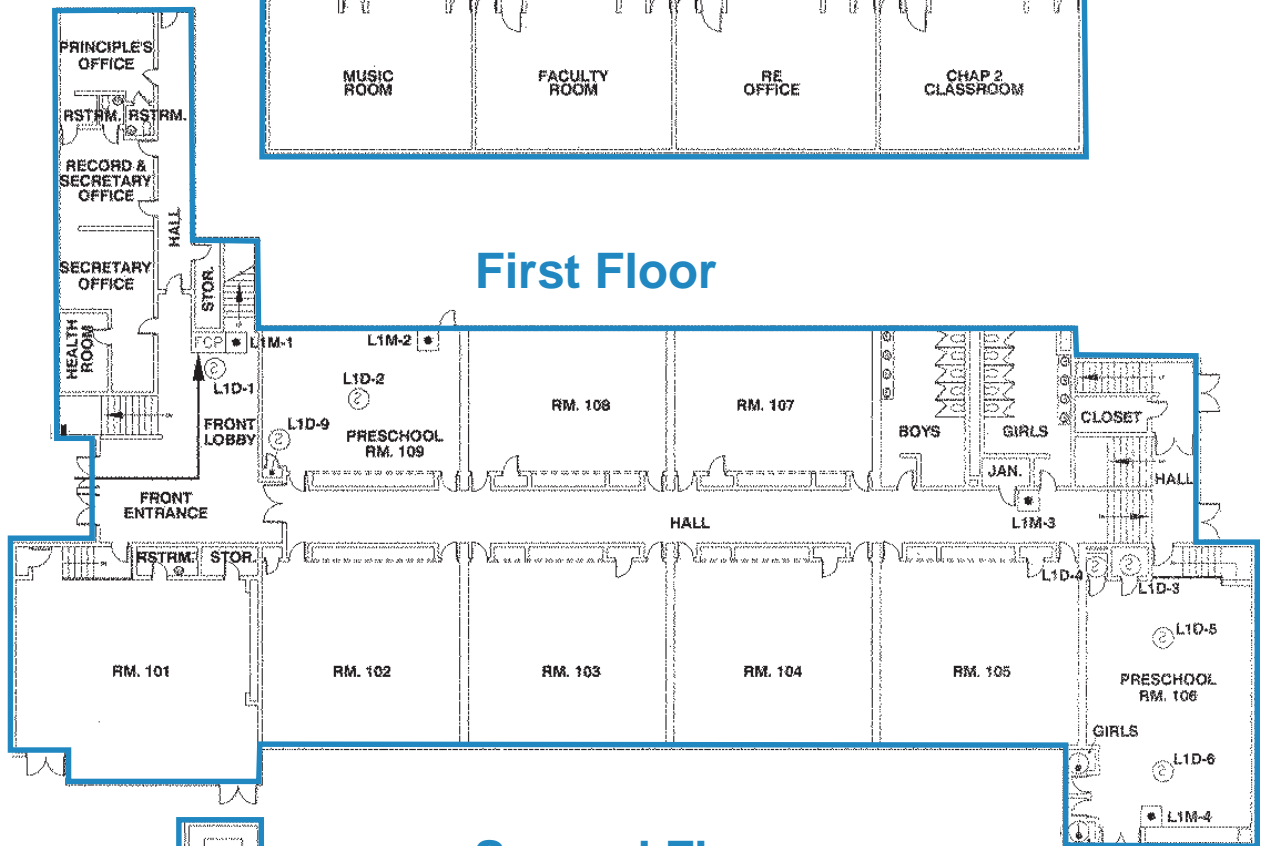


1100 Upham Street
Lakewood, CO 80214

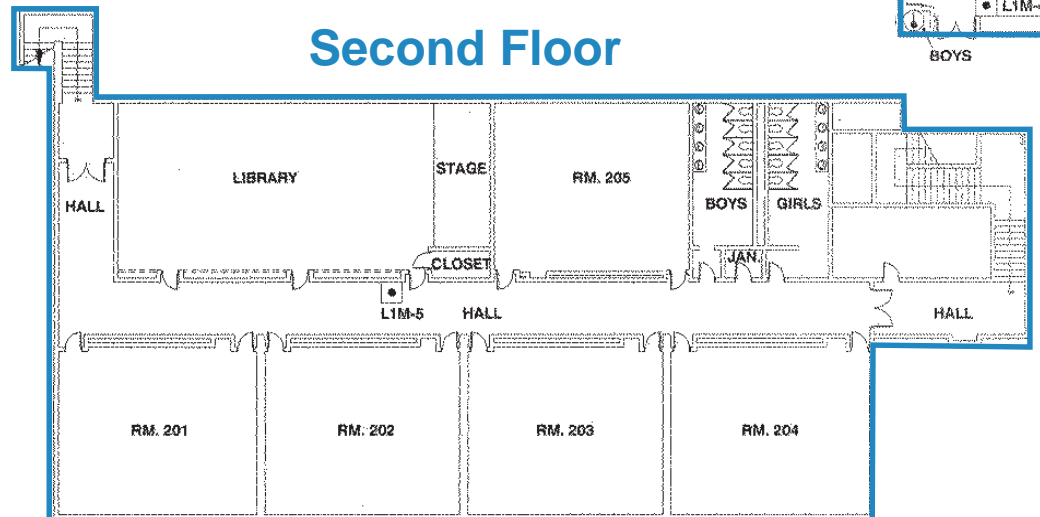
Basement



First Floor



Second Floor

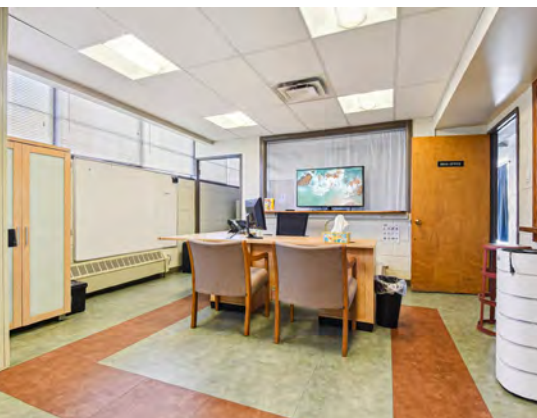


1100 Upham Street
Lakewood, CO 80214

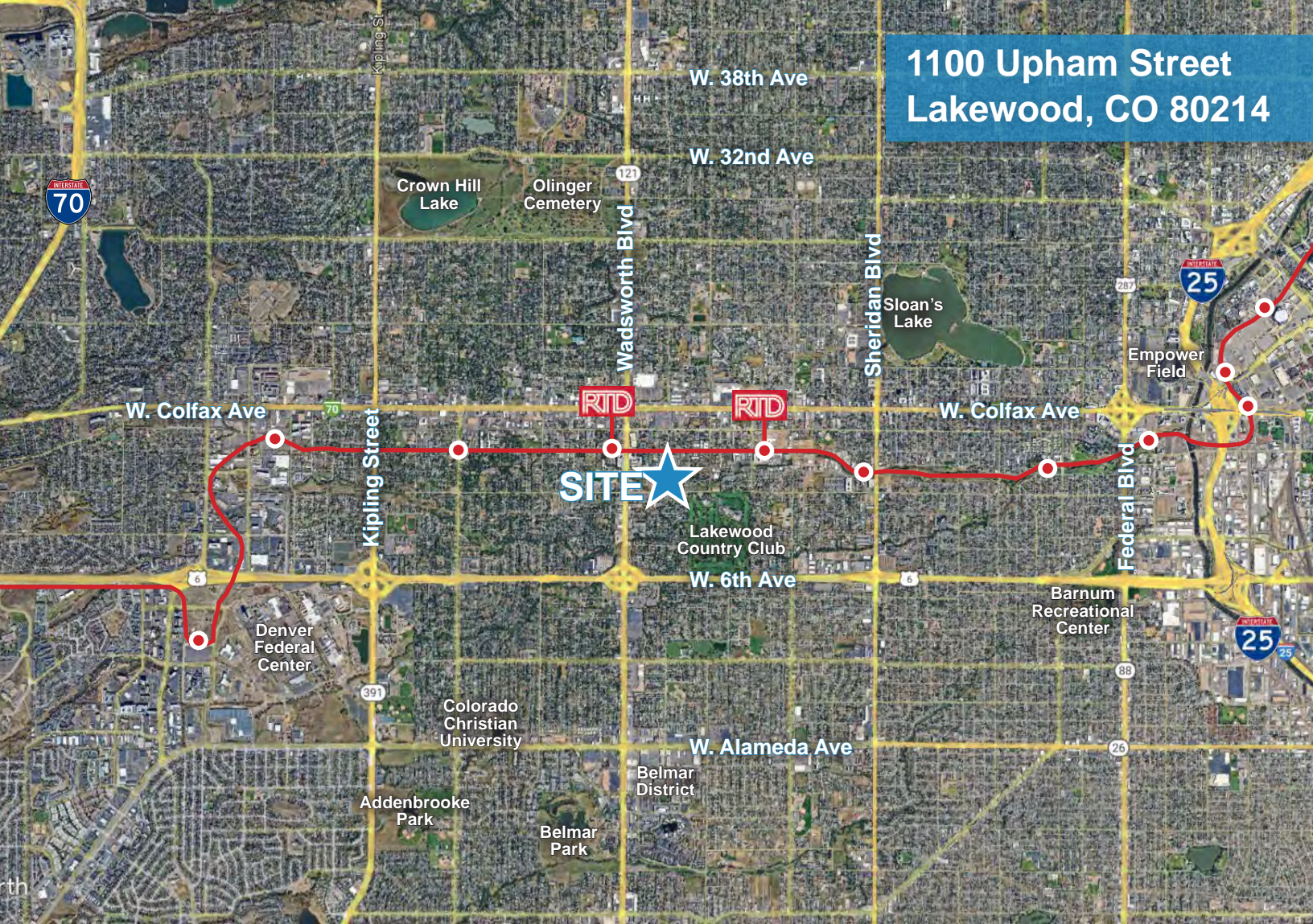


Total Usable Space	38,782 SF
Total Land Size	6.24 Acres
Year Built / Renov.	1953/ 1985
Zoning	M-R-U (w/ E Occupancy)
County	Jefferson
Parking	Surface Spaces

DEMOGRAPHICS	1 Mile	3 Mile	5 Mile
Population (2024)	15,862	144,711	404,422
Pop. Age 0-14 (2024)	23,277	61,462	184,753
Median Age	38.2	37.6	37.3
Total Households (2024)	7,431	62,525	179,834
Median HH Income	\$53,480	\$69,744	\$78,973



**1100 Upham Street
Lakewood, CO 80214**



Katie Hummer
katie@kincommercial.com
(303) 870-3343

Tom Omdal
tom@kincommercial.com
(573) 881-4363

Information herein has been obtained from reputable industry sources. Kin Commercial and its representatives make no representation, warranty or guaranty that the information contained herein is factual or reliable. Kin Commercial recommends that each potential tenant or buyer conduct their own individual investigation of this site to determine its suitability.