

Daniel Island Square

880 Island Park Drive, Charleston, SC 29492

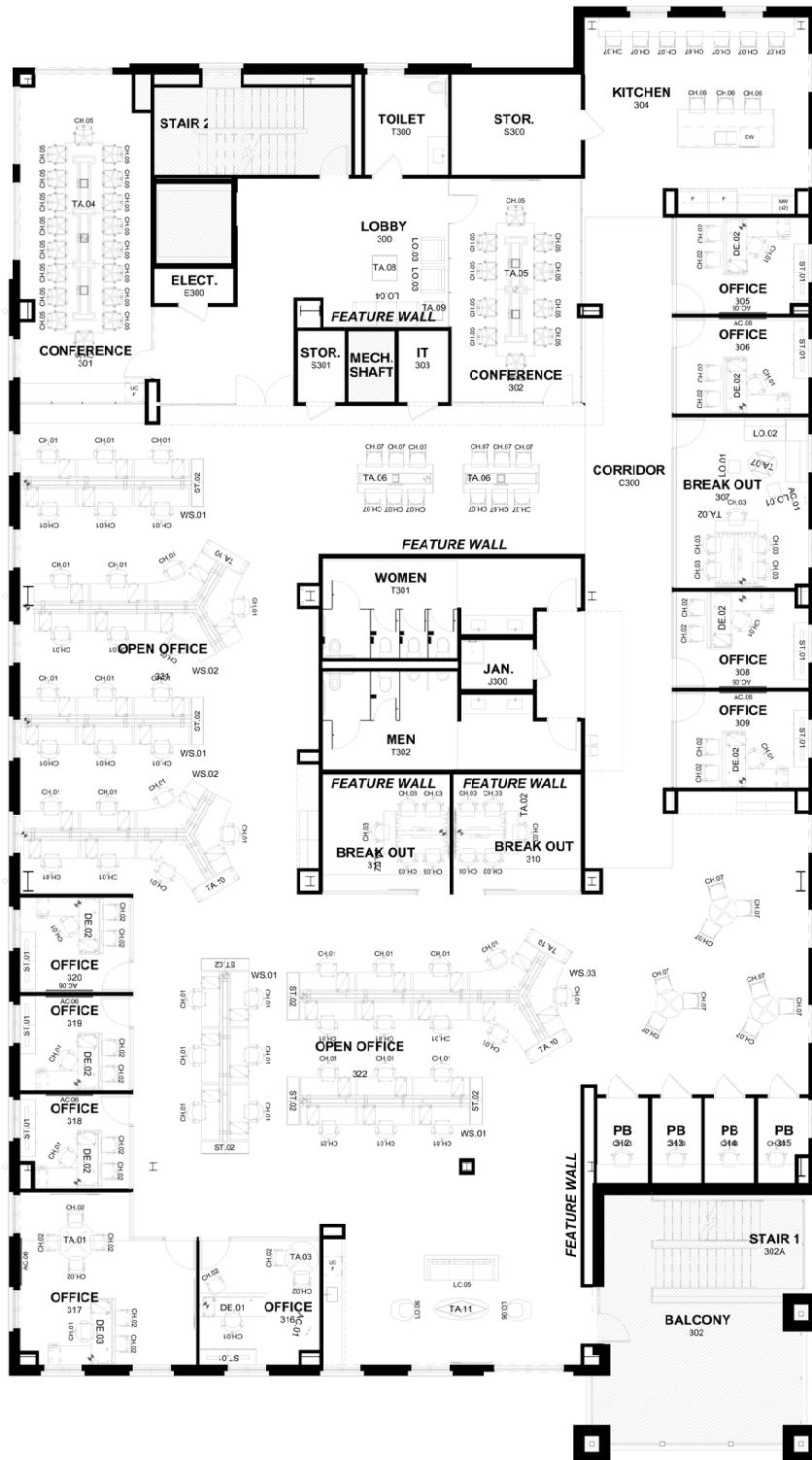


Building Size: 44,000+ sf • Available: 5,000sf - 11,419sf Office Suite

Property Details:

- Central Daniel Island location; walk to restaurants and retail
- Ample on-site parking
- Modern building with access controls and elevator
- Full floor suite
 - Subdividable into two suites +/-5,000sf to 6,500sf
- Modern top end interior office finishes in like new condition
- Nine private offices (Three additional rooms could be private offices)
- Four conference/break out rooms
- Boardroom for 18 guests with AV
- Open areas for workstations
- Outdoor patio
- Two break areas (one with kitchen)
- Furnishings available (see agent for specific details)

EXISTING FULL FLOOR PLAN



OPTION: SUBDIVIDE FLOOR INTO TWO TENANT SPACES MULTIPLE CONFIGURATIONS AVAILABLE

