



## 500-600 NORTH BULLARD AVENUE

GOODYEAR, ARIZONA 85338

2,618 Square Foot Suites (Suite 5 & Suite 19)

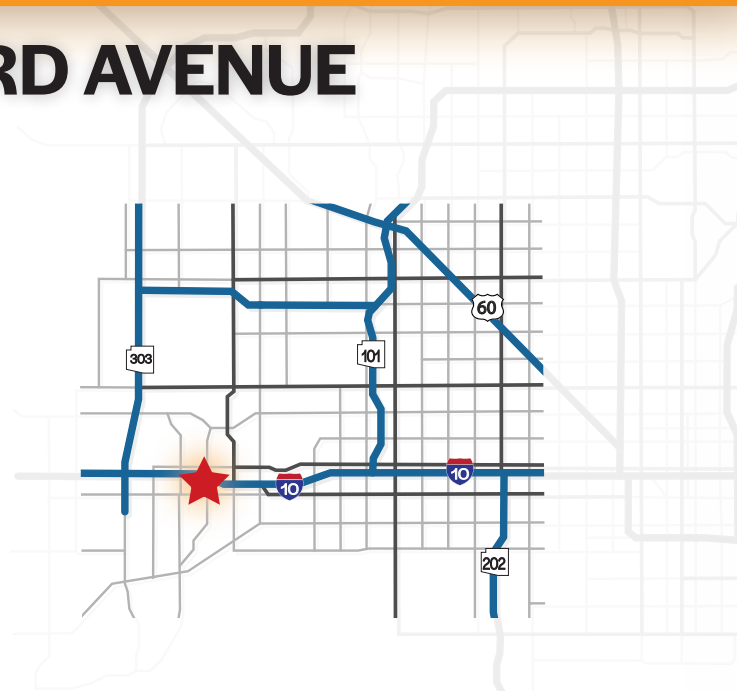
\$1.15 Per Square Foot, NNN

12' x 14' Grade Level Door

200A, 3 Phase Power

PAD Zoning

Reception, Private Office, Evap Cooled Warehouse



Professionally Owned and Managed by



**Scott Wiley**

Associate Broker

623.210.3749

scott@citywidecre.com

**Kate Wiley**

Sales & Leasing

602.872.0943

kate@citywidecre.com

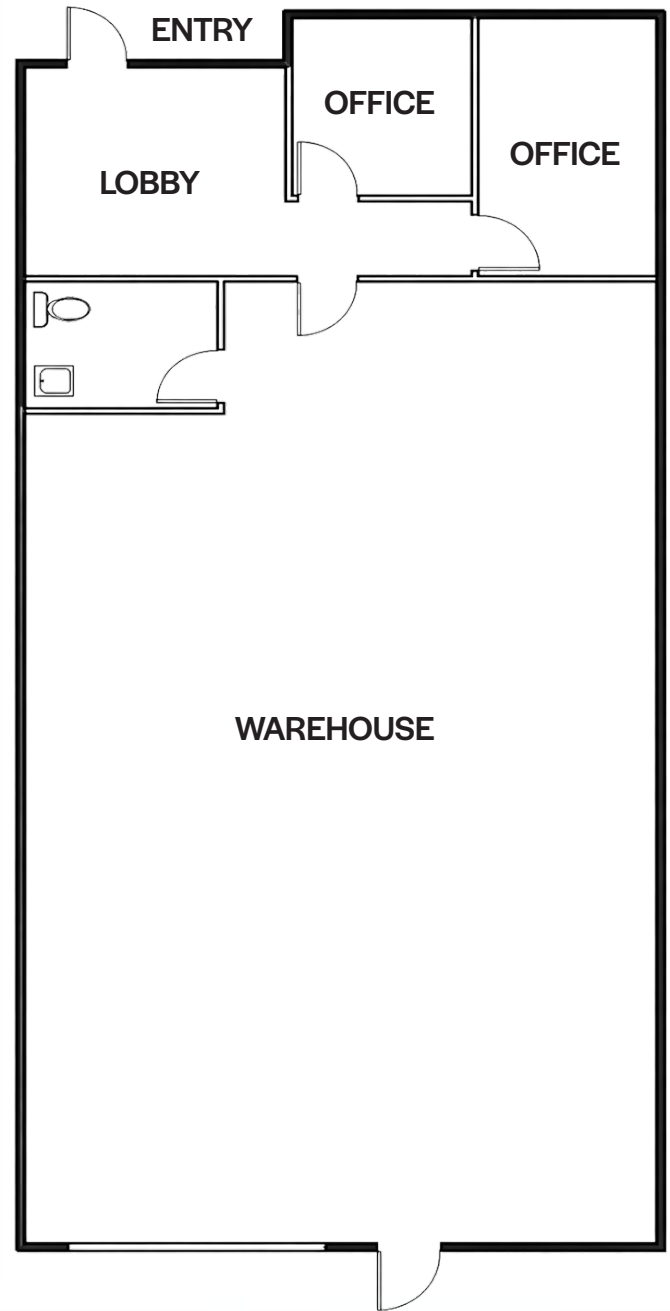
**Todd Hamilton, SIOR, CCIM**

Partner/Designated Broker

602.909.8759

todd@citywidecre.com

1645 E Missouri Avenue, Suite 230 • Phoenix, Arizona 85016 • 602.313.1000 • citywidecre.com



**Scott Wiley**

Associate Broker

623.210.3749

scott@citywidecre.com

**Kate Wiley**

Sales & Leasing

602.872.0943

kate@citywidecre.com

**Todd Hamilton, SIOR, CCIM**

Partner/Designated Broker

602.909.8759

todd@citywidecre.com

1645 E Missouri Avenue, Suite 230 • Phoenix, Arizona 85016 • 602.313.1000 • citywidecre.com