



# AVISON YOUNG

## 25 Adelaide Street East

Office for Sublease | Suite 500

### Details

<b>Availability</b>	Suite 500   3,905 SF
<b>Asking Rate</b>	Contact Listing Agents
<b>Additional Rent</b>	\$20.63 PSF (2022 est.)
<b>Occupancy</b>	Immediately
<b>Sublease Expiry</b>	December 30, 2028 (Flexible Sublease Term: From two to seven years)
<b>Commission</b>	\$1.20 PSF / Annum of Sublease Term

### Highlights

- Natural light in private offices
- Furniture available
- Steps to PATH connection and King Subway Station
- Suite includes multiple private offices, one boardroom, open area, supply closet and kitchen

**Get more  
information**

**Michael Stevens**

Associate, Sales Representative  
647 696 4545  
michael.stevens@avisonyoung.com

**Matt Olejnik**

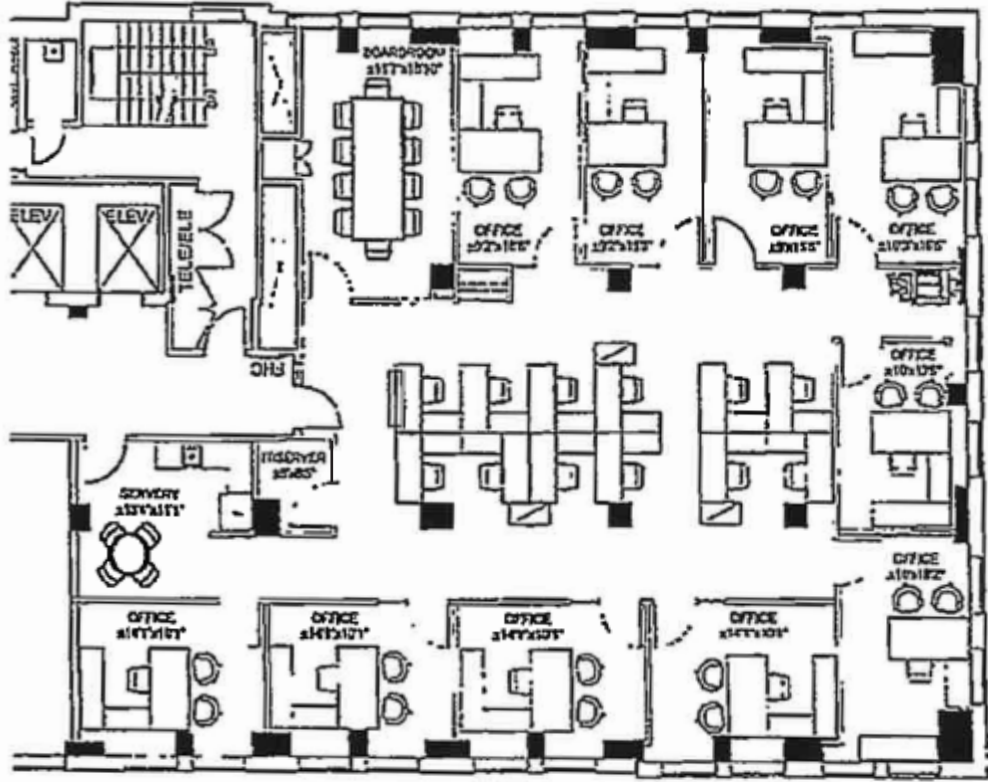
Principal, Sales Representative  
416 673 4038  
matt.olejnik@avisonyoung.com

Toronto Downtown | 18 York Street, Suite 400, Mailbox #4 | Toronto, ON M5J 2T8 | 416.955.0000



Suite 500 | 3,905 SF Available

25 Adelaide Street East



**AVISON  
YOUNG**

**Michael Stevens**

Associate, Sales Representative  
647 696 4545

[michael.stevens@avisonyoung.com](mailto:michael.stevens@avisonyoung.com)

**Matt Olejnik**

Principal, Sales Representative  
416 673 4038

[matt.olejnik@avisonyoung.com](mailto:matt.olejnik@avisonyoung.com)

We obtained the information above from sources we believe to be reliable. However, we have not verified its accuracy and make no guarantee, warranty or representation about it. It is submitted subject to the possibility of errors, omissions, change of price, rental or other conditions, prior sale, lease or financing, or withdrawal without notice. We include projections, opinions, assumptions or estimates for example only, and they may not represent current or future performance of the property. You and your tax and legal advisors should conduct your own investigation of the property and transaction.



Suite 500 | 3,905 SF Available

25 Adelaide Street East



**AVISON  
YOUNG**

**Michael Stevens**

Associate, Sales Representative

647 696 4545

[michael.stevens@avisonyoung.com](mailto:michael.stevens@avisonyoung.com)

**Matt Olejnik**

Principal, Sales Representative

416 673 4038

[matt.olejnik@avisonyoung.com](mailto:matt.olejnik@avisonyoung.com)

We obtained the information above from sources we believe to be reliable. However, we have not verified its accuracy and make no guarantee, warranty or representation about it. It is submitted subject to the possibility of errors, omissions, change of price, rental or other conditions, prior sale, lease or financing, or withdrawal without notice. We include projections, opinions, assumptions or estimates for example only, and they may not represent current or future performance of the property. You and your tax and legal advisors should conduct your own investigation of the property and transaction.



Suite 500 | 3,905 SF Available

25 Adelaide Street East



**AVISON  
YOUNG**

**Michael Stevens**

Associate, Sales Representative

647 696 4545

[michael.stevens@avisonyoung.com](mailto:michael.stevens@avisonyoung.com)

**Matt Olejnik**

Principal, Sales Representative

416 673 4038

[matt.olejnik@avisonyoung.com](mailto:matt.olejnik@avisonyoung.com)

We obtained the information above from sources we believe to be reliable. However, we have not verified its accuracy and make no guarantee, warranty or representation about it. It is submitted subject to the possibility of errors, omissions, change of price, rental or other conditions, prior sale, lease or financing, or withdrawal without notice. We include projections, opinions, assumptions or estimates for example only, and they may not represent current or future performance of the property. You and your tax and legal advisors should conduct your own investigation of the property and transaction.