



YOUR NAME HERE



Artesia Blvd

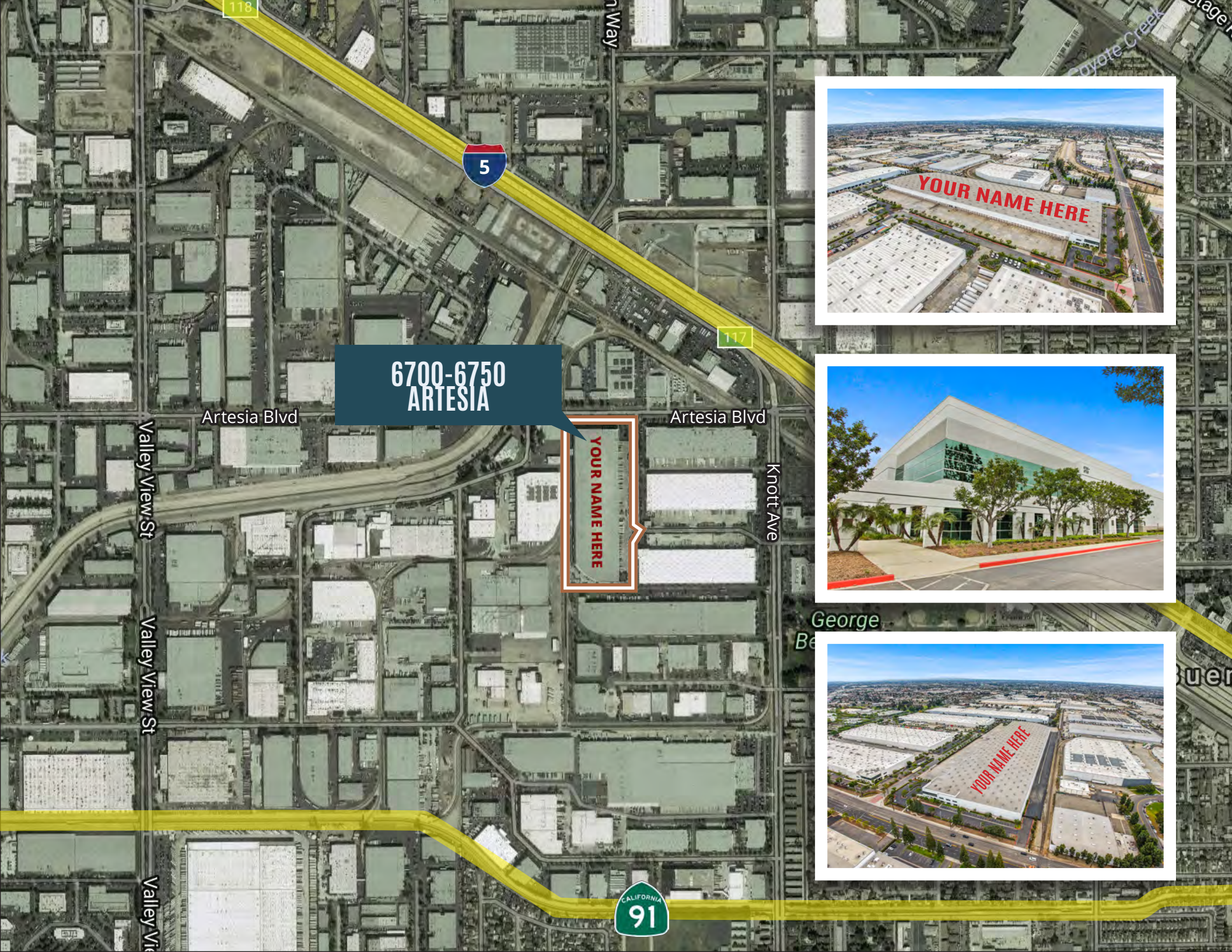
MID-COUNTIES
DISTRIBUTION CENTER

FOR LEASE

6700-6750 ARTESIA BOULEVARD, BUENA PARK, CA

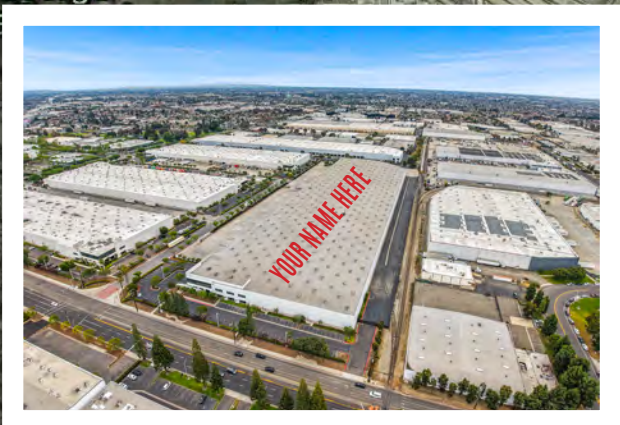
FREE STANDING BUILDING: ±447,055 SF | DIVISIBLE: ±274,088 SF & ±172,967 SF

CBRE



6700-6750
ARTESIA

YOUR NAME HERE



6700 Artesia

- Available SF: $\pm 274,088$ SF
- Office Space: $\pm 8,435$ SF
- Dock High Doors: 40
- Grade Level Doors: 1
- 237 Parking Spaces
- Power: 2,000 Amps

6750 Artesia:

- Available SF: $\pm 172,967$ SF
- Office Space: $\pm 4,512$ SF
- Dock High Doors: 28
- Grade Level Doors: 1
- 120 Parking Spaces
- Power: 1,200 Amps

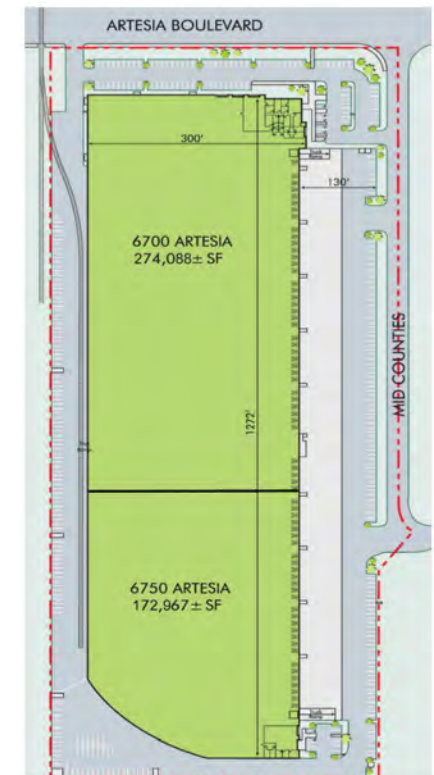
BUILDING HIGHLIGHTS

6700-6750 Artesia

- Free Standing Building
- Office Space: $\pm 12,947$ SF
- Minimum Warehouse Clearance: 30'
- ESFR Sprinkler System
- Dock High Doors: 68
- Grade Level Doors: 2
- Concrete Fenced Truck Court
- Large Concrete Area*
- Typ. Column Spacing: 52'x50'
- $\pm 130'$ Truck Court
- 361 Parking Spaces
- ± 19.53 Acre Parcel
- Power: 4000 Amps to ; 277/480 Volts
- Rail Service TBD
- Institutionally Owned & Managed

*Separate from Truck Court

6700-6750
ARTESIA





BEN SEYBOLD

+1 714 371 9233
ben.seybold@cbre.com
Lic. 01081310

RICK MCGEAGH

+1 310 363 4878
rick.mcgeagh@cbre.com
Lic. 00912627

CBRE

© 2025 CBRE, Inc. All rights reserved. This information has been obtained from sources believed reliable but has not been verified for accuracy or completeness. CBRE, Inc. makes no guarantee, representation or warranty and accepts no responsibility or liability as to the accuracy, completeness, or reliability of the information contained herein. You should conduct a careful, independent investigation of the property and verify all information. Any reliance on this information is solely at your own risk. CBRE and the CBRE logo are service marks of CBRE, Inc. All other marks displayed on this document are the property of their respective owners, and the use of such marks does not imply any affiliation with or endorsement of CBRE. Photos herein are the property of their respective owners. Use of these images without the express written consent of the owner is prohibited.