

REDWOOD RD DRIVE-THRU

7173 South Redwood Road • West Jordan, Utah 84084

HIGHLIGHTS

- 1,720 SF DRIVE-THRU FOR LEASE
- LEASE RATE: \$41 PSF NNNS: \$6 PSF
- NO TIA OFFERED
- ACCESS/VISIBILITY FROM REDWOOD



DAN ENGLE

541.944.1633 | dan.ingle@legendllp.com

PARTNER **XTEAM**
RETAIL ADVISORS

LEGEND
PARTNERS ■■■■

801.930.6750 | www.legendllp.com
2180 S 1300 E, Suite 240 | Salt Lake City, UT 84106

WEST JORDAN



DEMOGRAPHICS

	1 MILE	3 MILE	5 MILE
2023 EST. POPULATION	16,327	137,604	404,635
2028 PROJECTED POPULATION	16,626	145,806	425,269
2023 EST. DAYTIME POPULATION	3,496	51,592	166,986
2023 EST. AVG HH INCOME	\$119,117	\$115,783	\$117,110
2023 EST. HOUSEHOLDS	5,586	46,927	140,497
2023 EST. BUSINESSES	487	5,022	15,490

DAN ENGLE

541.944.1633 | dan.ingle@legendllp.com

PARTNER XTEAM
RETAIL ADVISORS

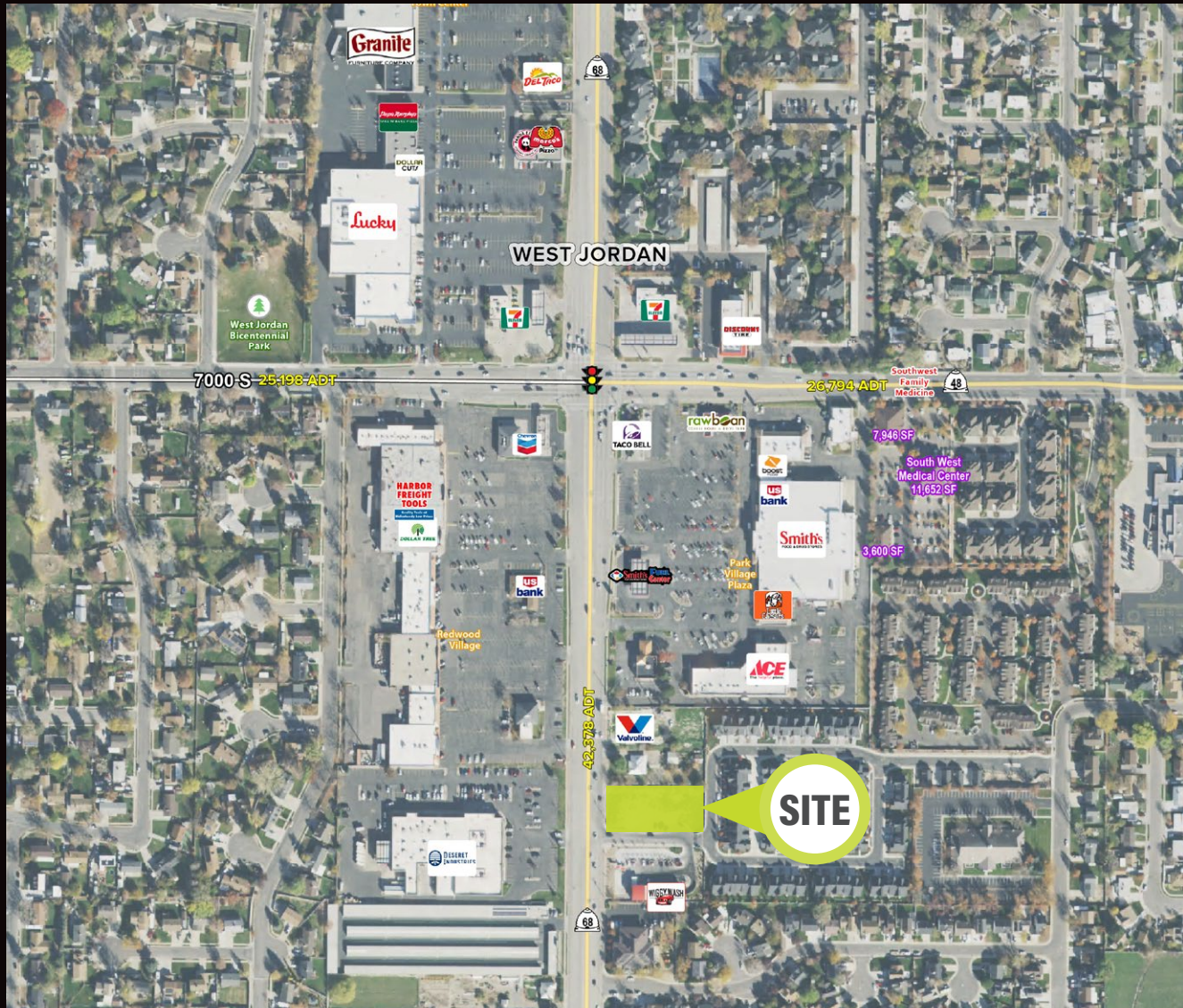
LEGEND
PARTNERS ■■■■

801.930.6750 | www.legendllp.com
2180 S 1300 E, Suite 240 | Salt Lake City, UT 84106

WEST JORDAN

TRAFFIC

REDWOOD RD
42,378 VEHICLES PER DAY



DAN ENGLE

541.944.1633 | dan.ingle@legendllp.com

PARTNER XTEAM
RETAIL ADVISORS

LEGEND
PARTNERS

801.930.6750 | www.legendllp.com
2180 S 1300 E, Suite 240 | Salt Lake City, UT 84106



DAN ENGLE

541.944.1633 | dan.ingle@legendllp.com

PARTNER XTEAM
RETAIL ADVISORS

LEGEND
PARTNERS ■■■■

801.930.6750 | www.legendllp.com
2180 S 1300 E, Suite 240 | Salt Lake City, UT 84106