

**5290 Arapahoe Ave
Units L
Boulder, CO**

7,000 Square Feet

Office or Retail Space Available!

- Recently finished space located within Greenwood Plaza
- Easy access and excellent visibility from Arapahoe Avenue
- High traffic count of up to 28,400 VPD
- Open floorplan
- Restroom in-suite
- Monument signage available on Arapahoe Avenue
- Great store frontage
- Rear loading area
- Abundant well-lit parking in front and rear
- Located near the hospital and major business parks in East Boulder



TEBO
PROPERTIES

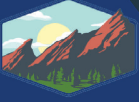
Contact us for more information:

leasing@teboproperties.com

303-447-8326

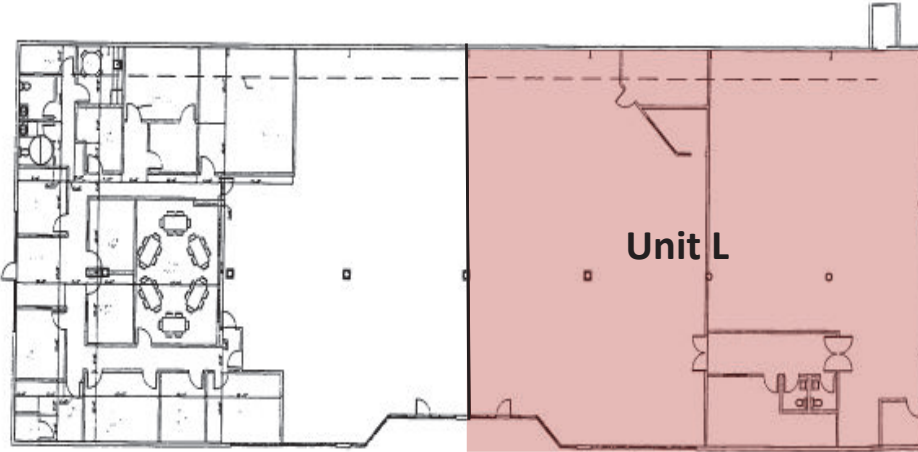
www.TEBOproperties.com

OFFICE/RETAIL SPACE FOR LEASE

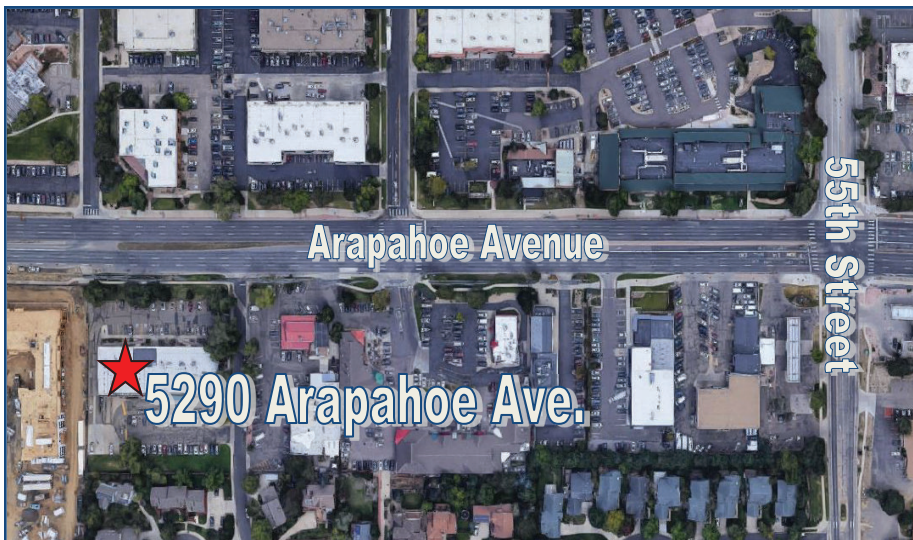


TEBO
PROPERTIES

5290 Arapahoe Ave Unit L



 - Available for Lease



Unit	Square Footage	Price
L	7,000	\$12.00/SF + \$8.44 (NNN) = \$11,923.33/MO



TEBO
PROPERTIES

Contact us for more information:
leasing@teboproperties.com
303-447-8326
www.TEBOproperties.com