

# 5500

W CHANDLER BLVD

Chandler, AZ 85226 | Suite 3

## AVAILABLE FOR SUBLEASE



**CBRE**



# Suite Overview

Chandler Center Commons is a 10-building office condo development positioned adjacent to the Intel campus, offering prominent Chandler Boulevard frontage and convenient access to I-10, Loop 101, and the SanTan Freeway.

The location provides excellent connectivity and is surrounded by a wide variety of retail and dining options.

## PROPERTY HIGHLIGHTS

**±13,362**  
Square Feet

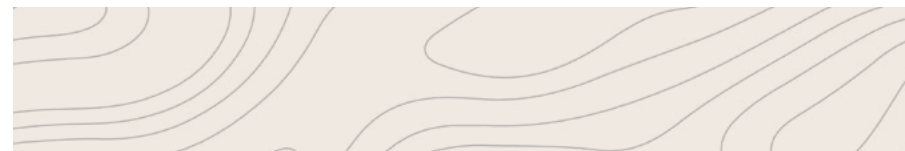
**\$25.00** PSF FSG  
Lease Rate

**02/29/2028**  
Lease Expiration

**2007**  
Year Built

**1-Story Class B**  
Office Building

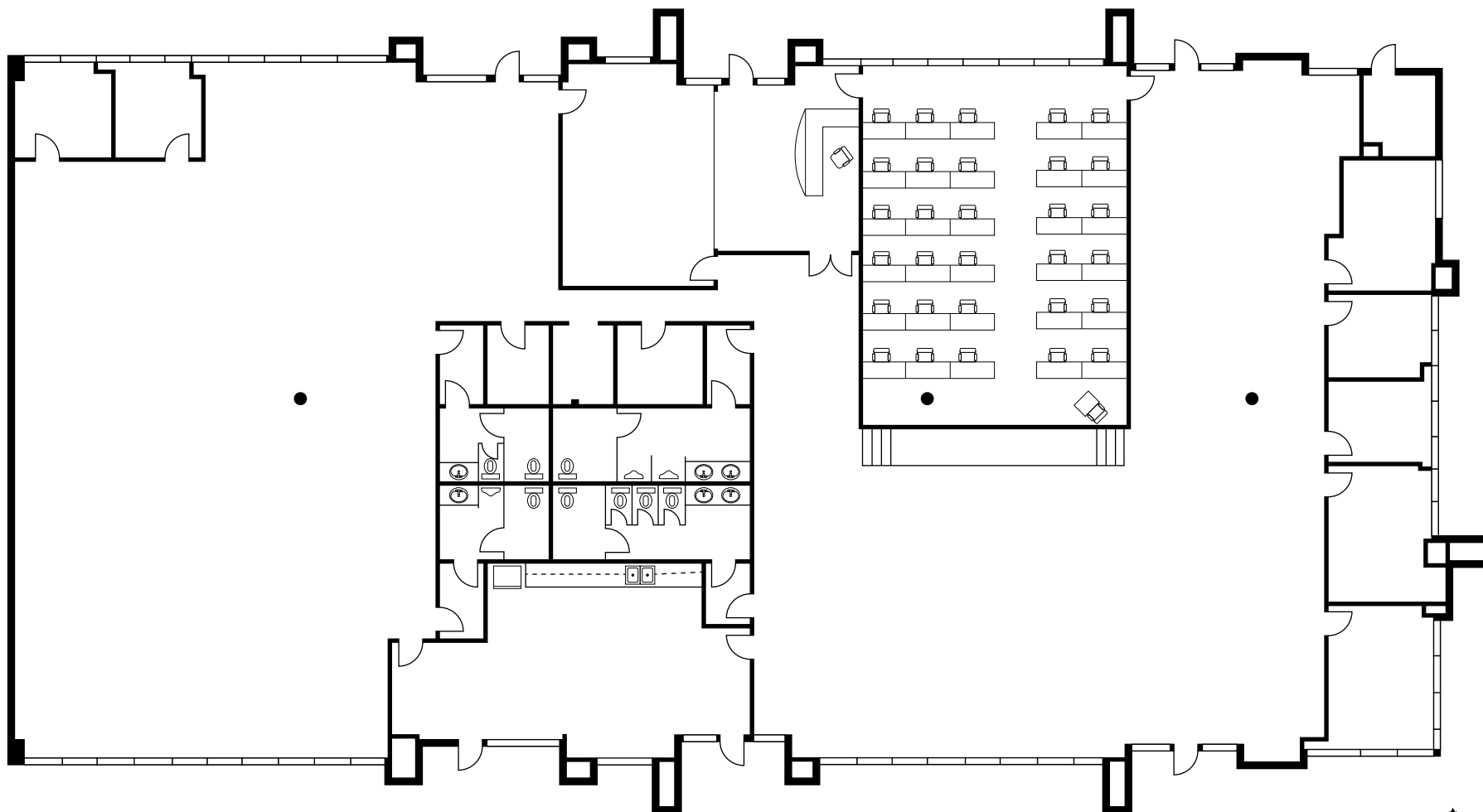
**5.00/1,000**  
Parking  
Covered & Reserved Available



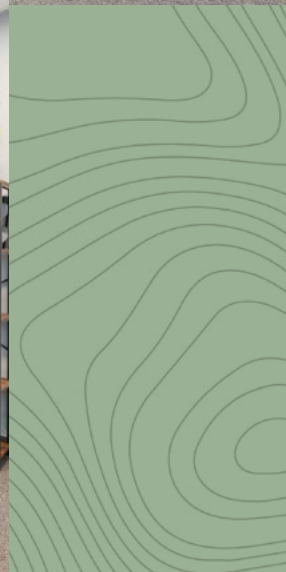
# Floor Plan

SUITE 3 — ±13,362 SF

[CLICK HERE FOR  
VIRTUAL TOUR](#)



NOT TO SCALE



# Area Map



# 5500 W Chandler Blvd

SUITE 3  
CHANDLER, ARIZONA 85226



## CONTACTS

### JAMIE SWIRTZ

Senior Vice President

+1 480 343 8586

[jamie.swirtz@cbre.com](mailto:jamie.swirtz@cbre.com)

### PETER N. SHIKAR

Senior Vice President

+1 732 509 8915

[Peter.Shikar@cbre.com](mailto:Peter.Shikar@cbre.com)

© 2026 CBRE, Inc. All rights reserved. This information has been obtained from sources believed reliable but has not been verified for accuracy or completeness. CBRE, Inc. makes no guarantee, representation or warranty and accepts no responsibility or liability as to the accuracy, completeness, or reliability of the information contained herein. You should conduct a careful, independent investigation of the property and verify all information. Any reliance on this information is solely at your own risk. CBRE and the CBRE logo are service marks of CBRE, Inc. All other marks displayed on this document are the property of their respective owners, and the use of such marks does not imply any affiliation with or endorsement of CBRE. Photos herein are the property of their respective owners. Use of these images without the express written consent of the owner is prohibited.

**CBRE**