

AVAILABLE FOR LEASE

19433 COLOMBO ST.
BAKERSFIELD, CA



FOR LEASE

19433 COLOMBO STREET



- Metal industrial warehouse building with a fenced and paved yard located in the fast-growing Airport submarket
- Features LED lighting and roof insulation.
- Close proximity to a variety of amenities—restaurants, gas stations, retail, & other industrial and office users

PROPERTY HIGHLIGHTS

Total Available:	±5,019 SF	Loading:	(2) 12' x 14' Roll-Up Doors
Office:	±1,660 SF	Clear Height:	18' - 20'
Lot Size:	1.76 Acres	Zoning:	M-2 PD, County of Kern
Canopy:	±1,150 SF	Asking Rent:	\$7,530.00/month, Industrial Gross

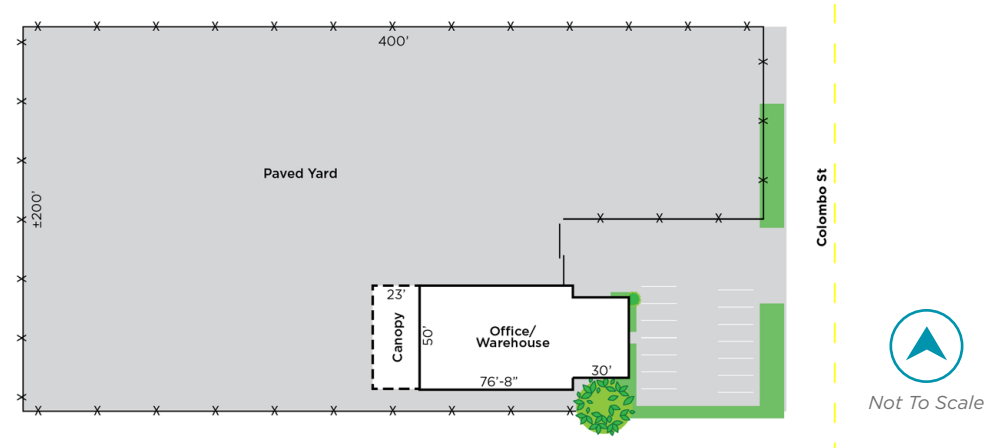


FOR LEASE

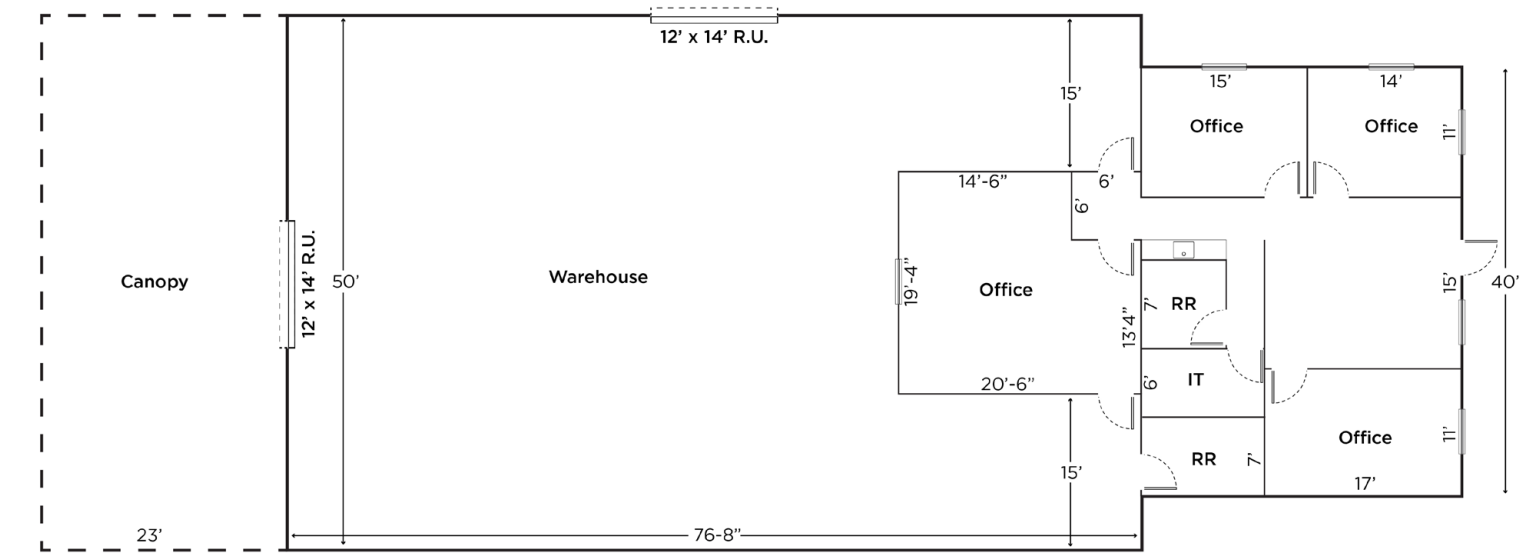
19433 COLOMBO STREET



SITE PLAN



FLOOR PLAN



FOR LEASE

19433 COLOMBO STREET

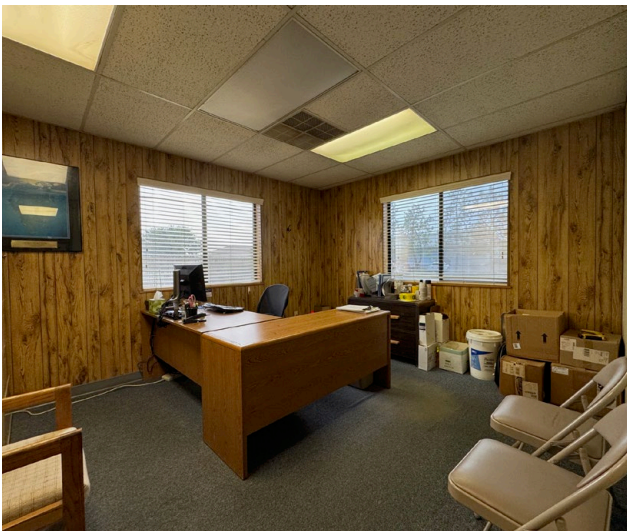


FOR LEASE

19433 COLOMBO STREET



PHOTOS





For more information, please contact:

Wayne Kress, SIOR

Executive Director
wayne.kress@cushwake.com
+1 661 706 5692
Lic. #00834680

Coby Vance

Senior Director
coby.vance@cushwake.com
+1 661 203 4400
Lic. #01449929

Scott Reynolds

Director
scott.reynolds@cushwake.com
+1 661 330 7616
Lic. #01382493

5060 California Ave, Suite 1000
Bakersfield, CA
PH: +1 661 327 2263
cushmanwakefield.com
Lic. #01880493

©2025 Cushman & Wakefield. All rights reserved. The information contained in this communication is strictly confidential. This information has been obtained from sources believed to be reliable but has not been verified. NO WARRANTY OR REPRESENTATION, EXPRESS OR IMPLIED, IS MADE AS TO THE CONDITION OF THE PROPERTY (OR PROPERTIES) REFERENCED HEREIN OR AS TO THE ACCURACY OR COMPLETENESS OF THE INFORMATION CONTAINED HEREIN, AND SAME IS SUBMITTED SUBJECT TO ERRORS, OMISSIONS, CHANGE OF PRICE, RENTAL OR OTHER CONDITIONS, WITHDRAWAL WITHOUT NOTICE, AND TO ANY SPECIAL LISTING CONDITIONS IMPOSED BY THE PROPERTY OWNER(S). ANY PROJECTIONS, OPINIONS OR ESTIMATES ARE SUBJECT TO UNCERTAINTY AND DO NOT SIGNIFY CURRENT OR FUTURE PROPERTY PERFORMANCE.

