



# Available For Sale

## 414 Continuum Drive

Liverpool, NY

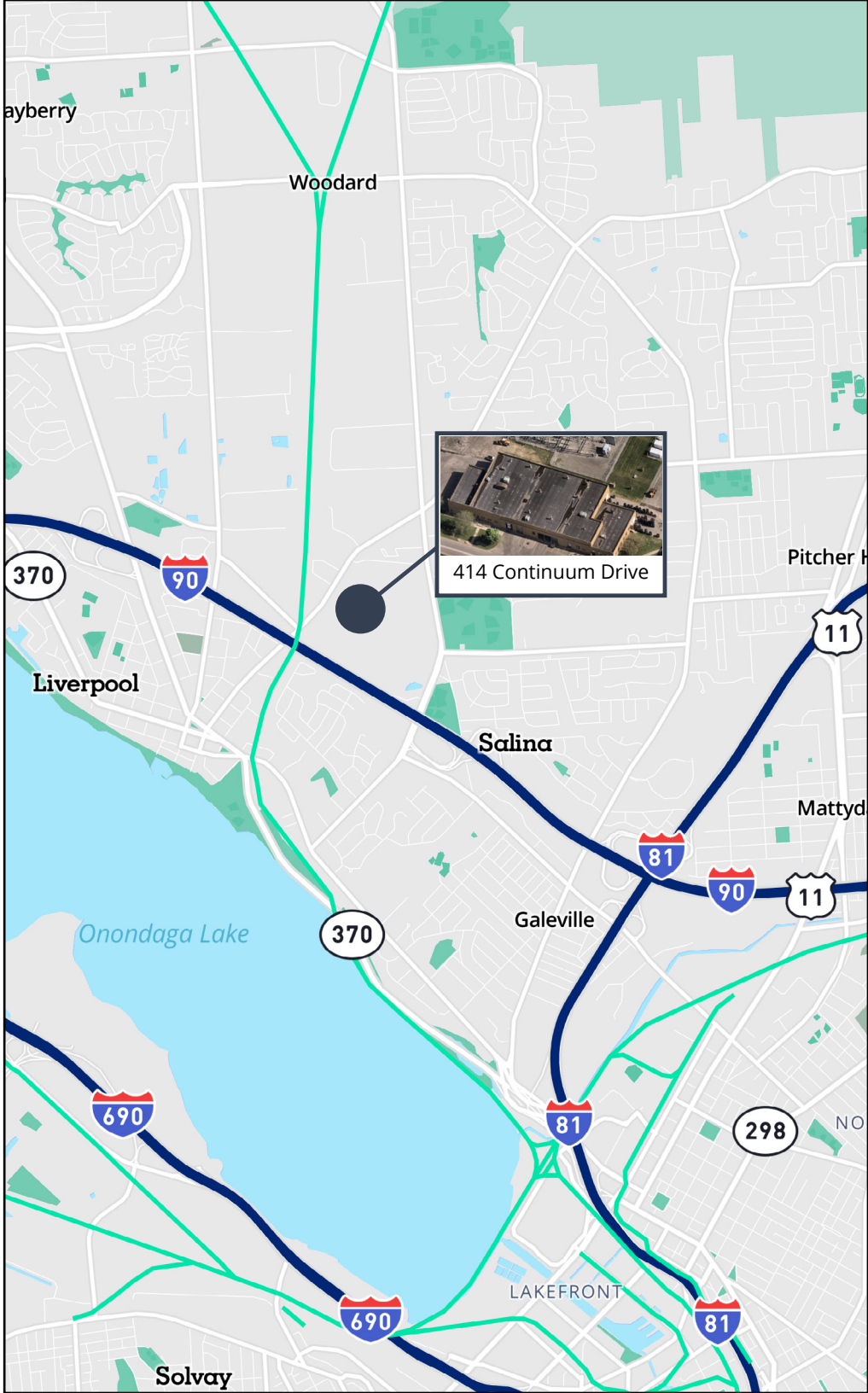


AVISON  
YOUNG

# Property summary

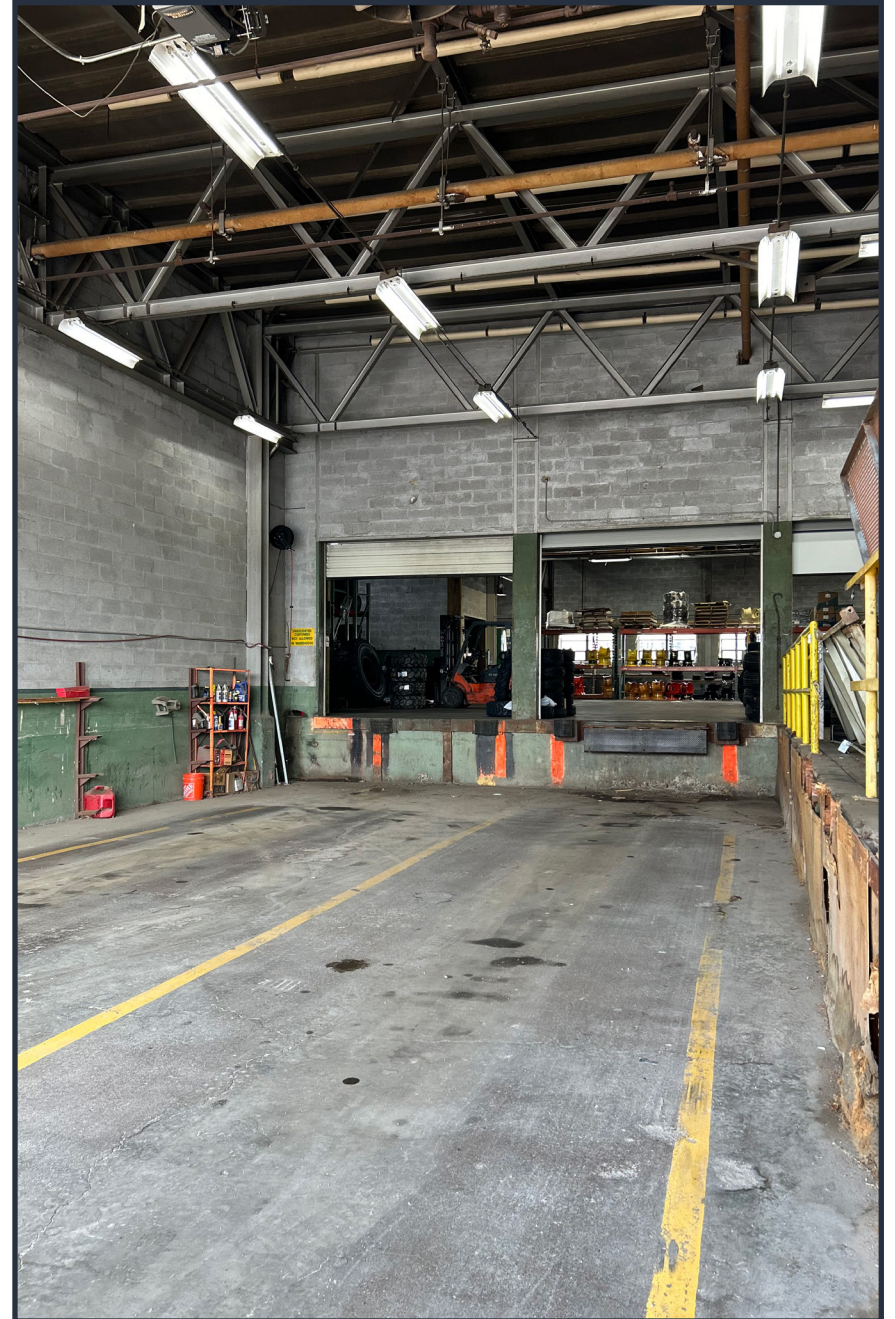
414 Continuum Drive in Liverpool, NY offers approximately 57,537 SF of industrial warehouse space, ideally suited for distribution, logistics, and light manufacturing users. Located within an established industrial corridor with excellent access to major transportation routes, the property provides a functional layout for a variety of operations.

PROPERTY SUMMARY	
Address	414 Continuum Drive
Type	Flex / Industrial Facility
Location	Liverpool, NY
Total SF	57,537 SF
Acreage	2.24 Acres
Year Built/Renovated	1960
Dock Doors	3
Drive-ins	1
Zoning	0-2- Office and Light Industrial Park District
Parking	<ul style="list-style-type: none"><li>- 7 Striped spaces in the front of the building.</li><li>- Additional unmarked parking surrounding the building.</li></ul>
Security	Secured Park with staffed entry gates and on-site patrols





# Property photography





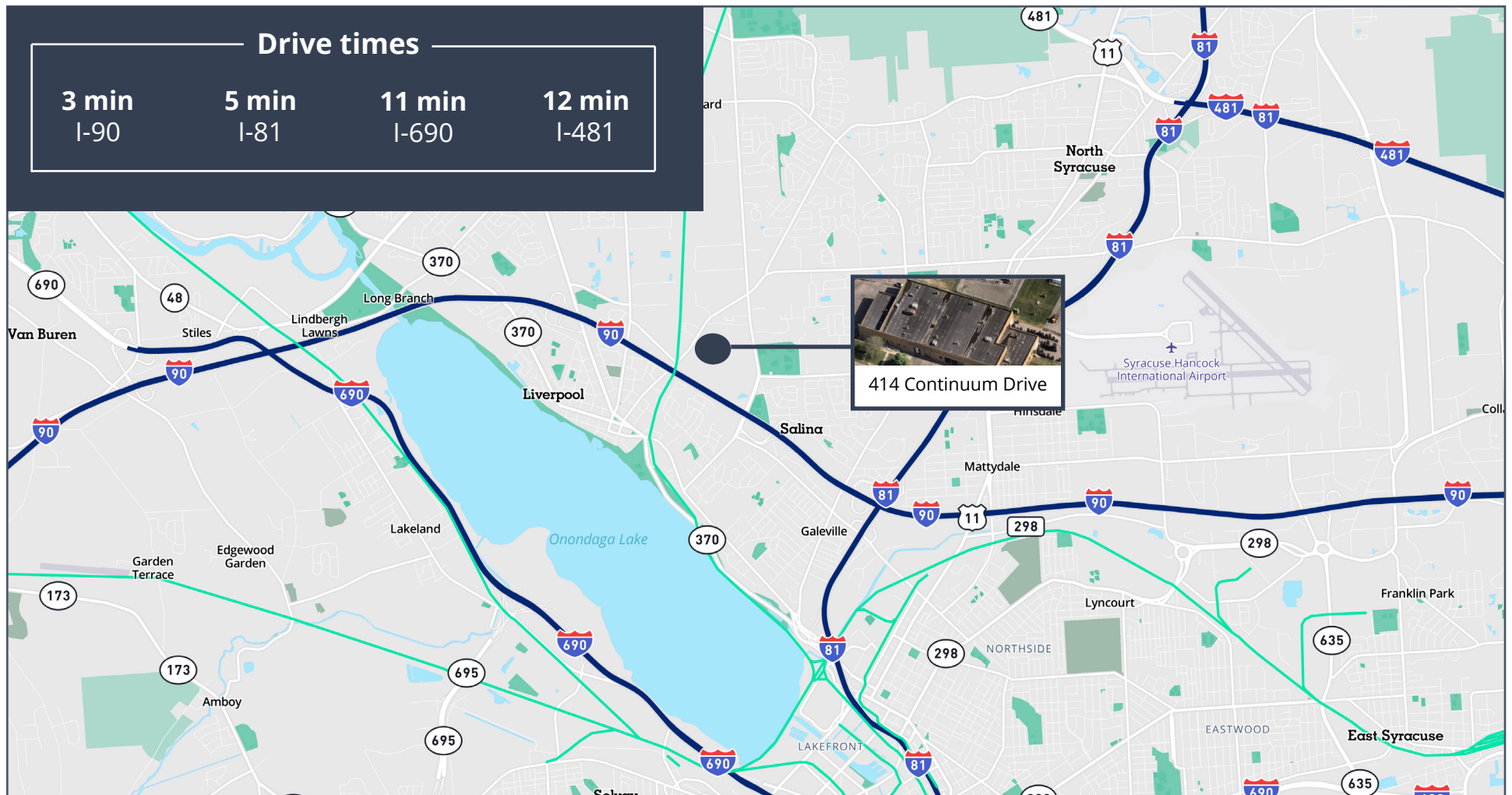
# Property photography





# Strategic Liverpool location with immediate access to I-90

Liverpool is a suburb located just north of Syracuse, offering a peaceful suburban atmosphere with convenient access to major transportation routes. The property is situated near Interstate 90 (the New York State Thruway), providing easy connectivity to all major cities within New York state. The surrounding area provides a well-balanced mix of industrial, commercial, and residential developments, making it an attractive location for businesses seeking convenience and strategic positioning. The Liverpool area boasts a variety of amenities, including numerous parks and trails for outdoor activities such as hiking, biking, and walking. Several lakes in the vicinity offer opportunities for fishing and boating. The village also features a range of shopping and dining options particularly along First Street.



# Let's connect.

The logo for Avison Young, featuring the company name in a bold, sans-serif font. The text is white and is framed by two horizontal white lines, one above and one below the name.

**AVISON  
YOUNG**

**Paul French**

Principal  
610 308 1961  
[paul.french@avisonyoung.com](mailto:paul.french@avisonyoung.com)

**David Smith**

Principal  
609 314 4864  
[dave.smith@avisonyoung.com](mailto:dave.smith@avisonyoung.com)

**Will Ciarlone**

Associate  
484 889 8491  
[william.ciarlone@avisonyoung.com](mailto:william.ciarlone@avisonyoung.com)



**Len Brown**

JF Real Estate  
315 380 1161  
[lbrown@jfrealestate.com](mailto:lbrown@jfrealestate.com)