

# Medical Building For Lease

18 Centre Drive | Monroe | New Jersey



## DEMOGRAPHICS

Radius	1 Miles	3 Miles	5 Miles
Population	6,702	30,010	80,899
Households	3,499	13,647	31,160
Average Household Income	\$82,894.00	\$95,408.00	\$117,813.00

## MEDICAL AND OFFICE SUITES FOR LEASE:

**+/- 2,300 SF**

**\$21.00/NNN**

**Location! Location! Location!**

## FEATURES

- Located in the Medical Hub of a rapidly growing area
- Fully stabilized NNN medical arts building
- Site has ample parking and protected portico patient drop off area
- Anchored by medical tenants from national universities
- Excellent nearby transportation options
- Building has individual tenant meters and a computerized HVAC system
- Located near Robert Wood Johnson, St. Peters & Princeton Medical Center Office Hub

Listed By: Anita Singh, *Executive Director, Medical Division*

Contact:  (908) 295-9640  [anita.singh@cbmoves.com](mailto:anita.singh@cbmoves.com)



**COLDWELL  
BANKER  
COMMERCIAL**

**NRT**

# Medical Building For Sale

18 Centre Drive | Monroe | New Jersey

## Photos



Listed By: Anita Singh, *Executive Director, Medical Division*

Contact:  (908) 295-9640  [anita.singh@cbmoves.com](mailto:anita.singh@cbmoves.com)



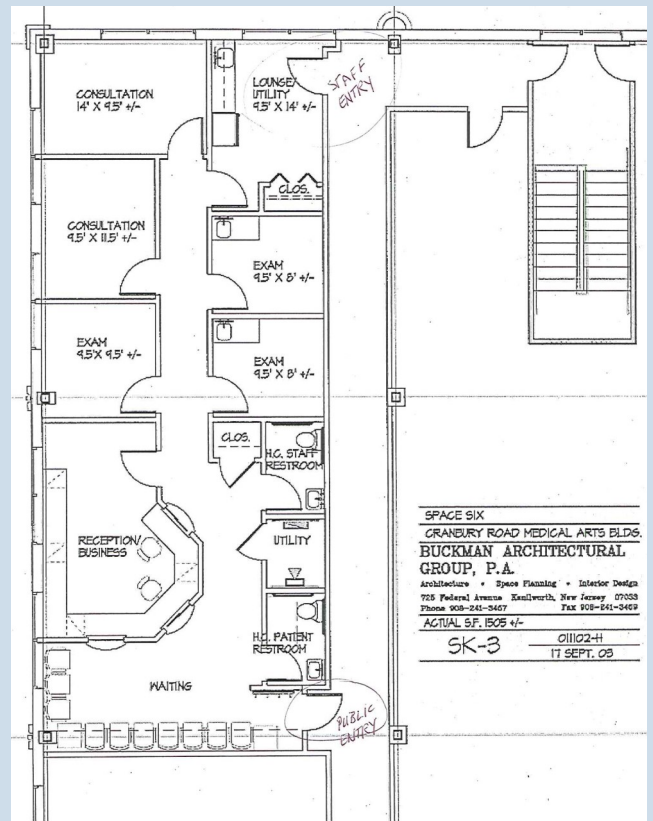
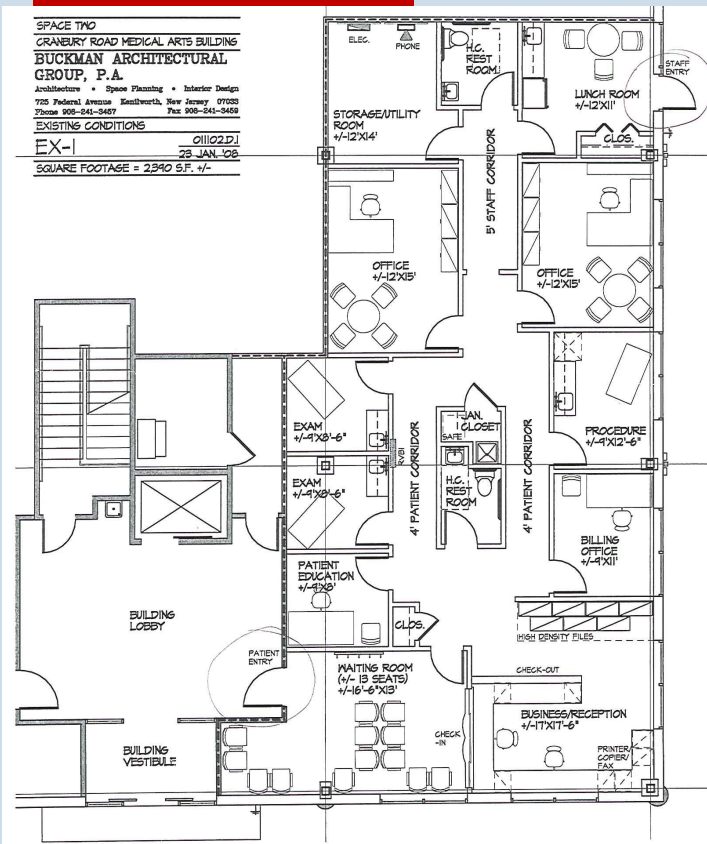
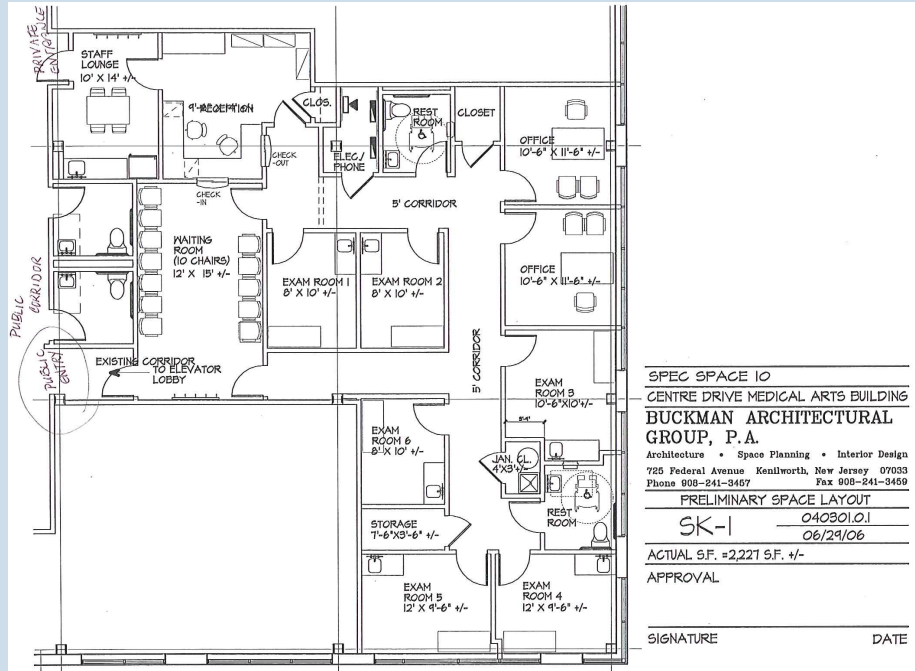
**COLDWELL  
BANKER  
COMMERCIAL**

**NRT**

# Medical Building For Sale

18 Centre Drive | Monroe | New Jersey

## Layouts



Listed By: Anita Singh, *Executive Director, Medical Division*

Contact: (908) 295-9640 ✉ anita.singh@cbmoves.com

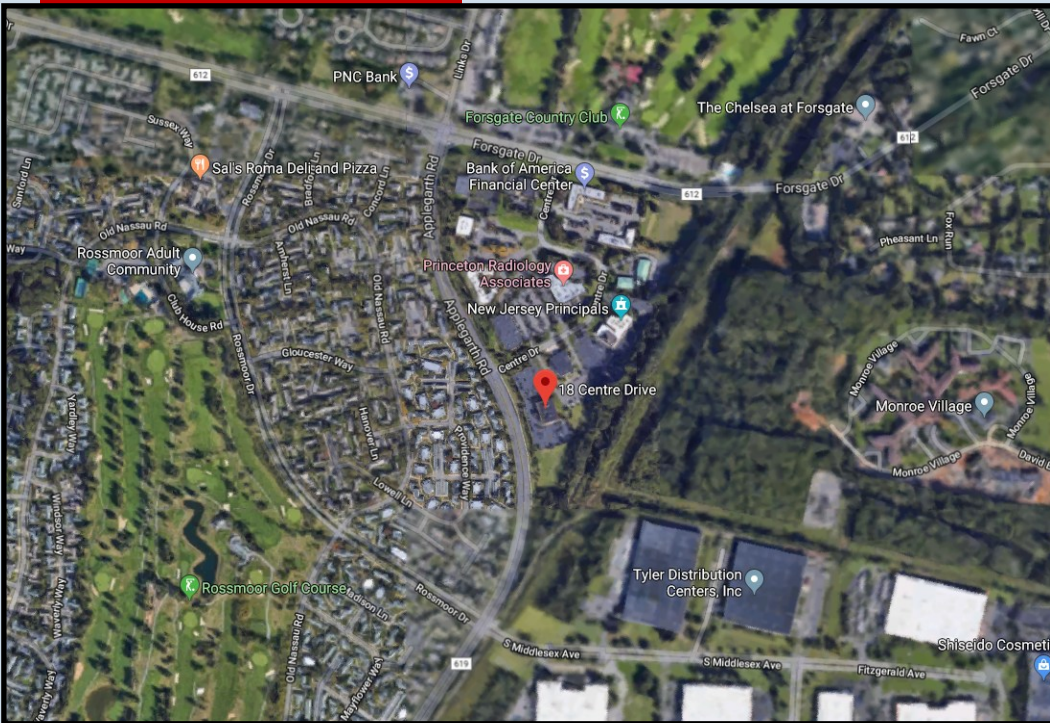


**NRT**

# Medical Building For Sale

18 Centre Drive | Monroe | New Jersey

## Location



Listed By: Anita Singh, *Executive Director, Medical Division*

Contact:  (908) 295-9640  [anita.singh@cbmoves.com](mailto:anita.singh@cbmoves.com)



**COLDWELL  
BANKER  
COMMERCIAL**

**NRT**