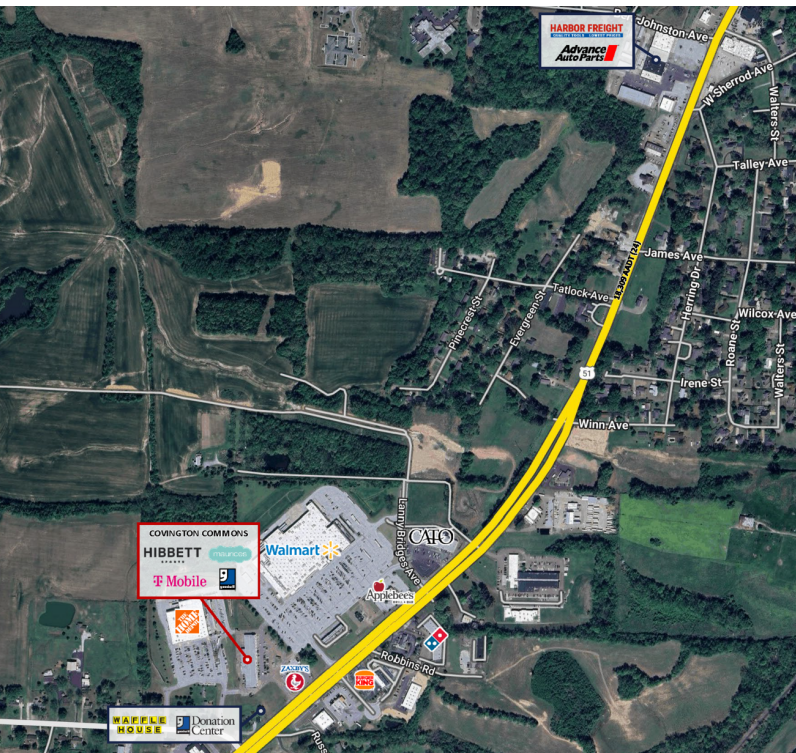


COVINGTON COMMONS

1655 U.S. 51



PROPERTY DESCRIPTION

6,740 SF Available in a Walmart and Home Depot Shadow Center Facing Highway 51

PROPERTY HIGHLIGHTS

- Availability within a 29,536 SF Retail Center located between Walmart Supercenter and Home Depot
- Situated in Covington's main retail corridor with high traffic counts and retail draw
- Current co-tenants include well-known national and regional brands such as Hibbett Sports, Maurices, T-Mobile, and Goodwill
- Traffic Counts: U.S. 51 (18,309 AADT)

DEMOGRAPHICS	1 MILE	3 MILES	5 MILES
Total Households	58	2,354	5,414
Total Population	151	6,303	14,093
Average HH Income	\$85,697	\$87,799	\$87,288

DUSTIN JONES

901.545.3150

djones@jonesaur.com

CARSON KANE

901.538.7219

ckane@jonesaur.com

COVINGTON COMMONS

1655 U.S. 51



SUITE	TENANT NAME	SPACE SIZE
Suite A	Available	4,020 SF
Suite B	Cricket Wireless	1,340 SF
Suite E	New Star Vapor	1,340 SF
Suite F	Ming's Buffet & Grill	6,065 SF
Suite G	Hibbett Sports	5,040 SF
Suite H	Maurices	4,853 SF
Suite J	Available	2,720 SF
Suite L	T-Mobile	2,640 SF
Suite M	Goodwill	1,340 SF