

INDUSTRIAL FOR SALE

10780 Old Washington Highway

Glen Allen, Virginia 23060



FORMER
RAIL SPUR

MOUNTAIN RD

OLD WASHINGTON HWY



THALHIMER

±85,820 SF – 15.4 ACRES

BACK ON THE MARKET !!!

RARE, WELL LOCATED
INDUSTRIAL
OPPORTUNITY

PROPERTY HIGHLIGHTS

15.4 acres

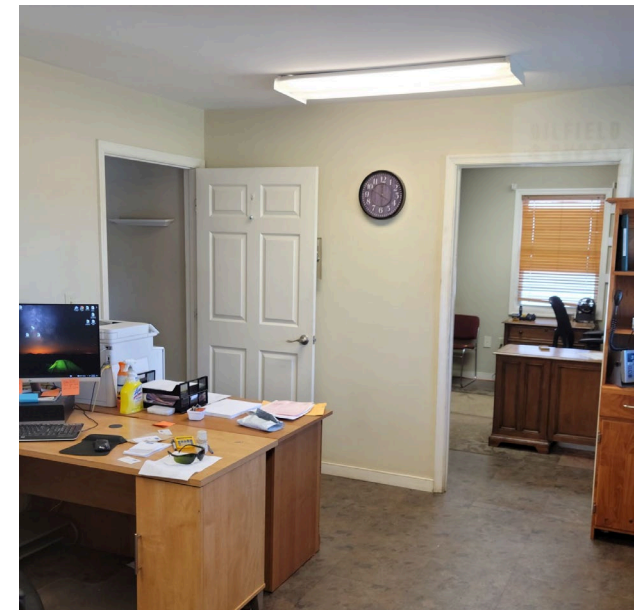
±85,820 total SF

M-2 zoning

- 1,477 SF of Office Space (2007)
- 30,258 SF of leased space (1958)
- 10,070 SF of garage space (1958)
 - 14' ceiling height
 - 1 – two (2) ton crane
 - 1 – five (5) ton crane
- 44,015 SF of Manufacturing Warehouse (1958)
 - 28' clear ceiling height
 - 2 – fifteen (15) ton cranes
 - 2 – five (5) ton cranes
 - 1 – ten (10) ton crane
 - 1250 AMP 440V 3 phase service
- Approximately 10 acres of stoned outside storage
- Inground scale
- Rail access (CSX)
- Great owner/occupier opportunity
- **Currently four (4) tenants leasing approximately 30,000 SF**



PROPERTY PHOTOS



LOCATION & ZONING

Zoned M-2: Permitted uses (partial list)

- Repair establishment
- Automobile repair, sales and rentals
- Commercial vehicle repairs, sales and rentals
- Fleet terminal
- Towing or wrecking service
- Contractor services
- Heavy equipment sales, rental and service
- Light manufacturing
- Cold storage plant
- Outdoor storage as a principal use
- Self-service storage facility
- Truck or freight terminal
- Warehouse (distribution)
- Warehouse (storage)
- Wholesale sales

DRIVING DISTANCES

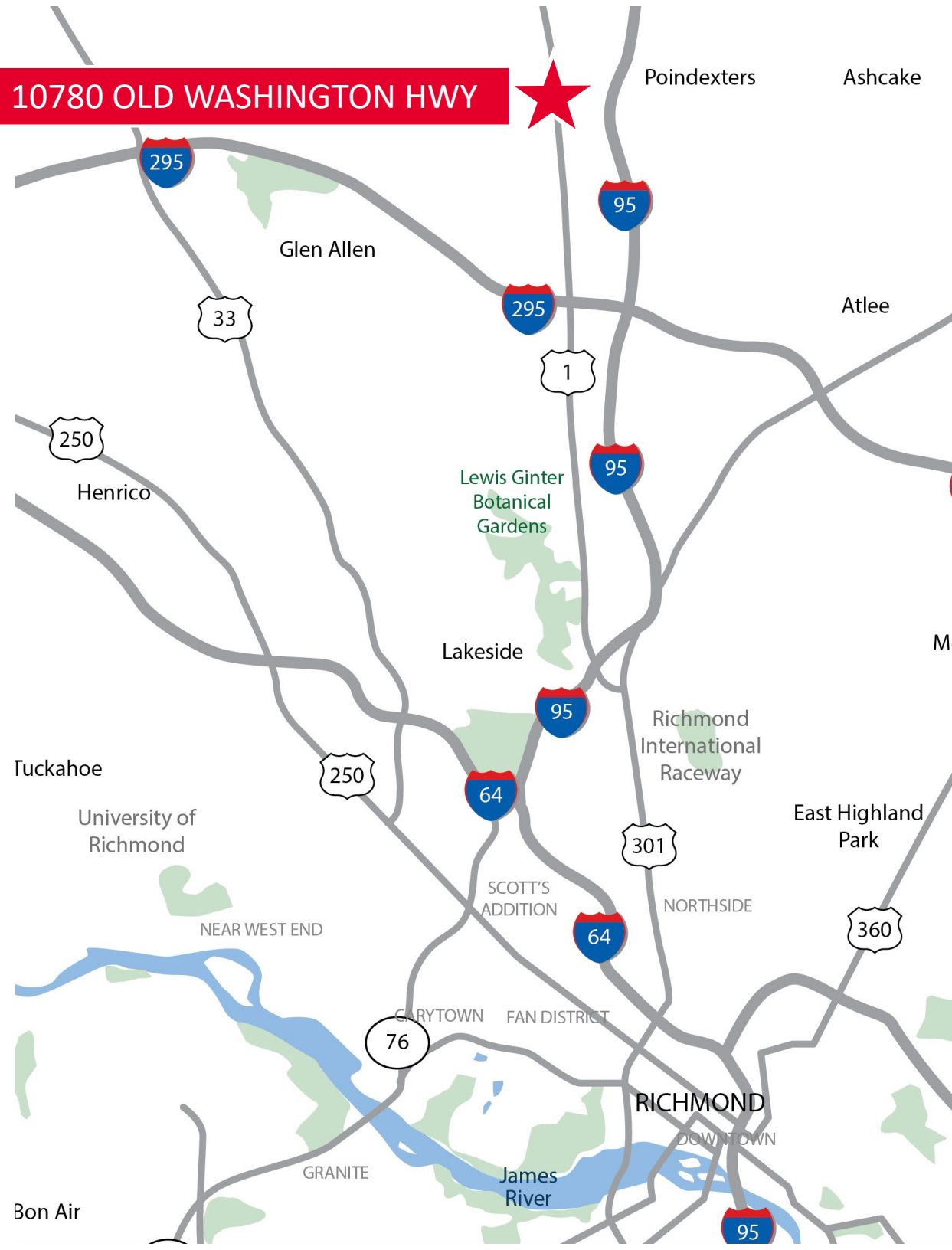
1.00 MILES TO I-295

3.05 MILES TO I-95

15.20 MILES TO RICHMOND AIRPORT

19.80 MILES TO RICHMOND MARINE TERMINAL

10780 OLD WASHINGTON HWY





DANNY HOLLY
Senior Vice President
804 697 3552
danny.holly@thalhimer.com

Independently Owned and Operated / A Member of the Cushman & Wakefield Alliance

Cushman & Wakefield | Thalhimer © 2025. No warranty or representation, express or implied, is made to the accuracy or completeness of the information contained herein, and same is submitted subject to errors, omissions, change of price, rental or other conditions, withdrawal without notice, and to any special listing conditions imposed by the property owner(s). As applicable, we make no representation as to the condition of the property (or properties) in question.