



## 5-Bay Garage

419 E Main St  
Mount Sterling, Kentucky 40353

### Property Highlights

- Ideal for storage or repair shop with ample room for vehicles, equipment and tools
- Expansive lot space for additional vehicle storage, outdoor equipment sales or additional construction
- 13' ceiling heights with 30' depth drive-in bays
- 12' clear height roll-up garage doors for easy access
- Located directly off East Main Street
- Close proximity to I-64 (1.8 Miles) and the Bypass (1.3 Miles)
- Zoned B-4

### Offering Summary

Sale Price:	\$300,000
Lease Rate:	\$10.00 SF/yr (MG)
Building Size:	2,300 SF
Lot Size:	1.06 Acres

### For More Information

**Max Darby**

Associate

O: 859 224 2000

mdarby@naiisaac.com





Commercial Real Estate Services, Worldwide.

For Sale & Lease  
2,300 SF | \$300,000  
5-Bay Garage on 1.06 AC



NO WARRANTY OR REPRESENTATION, EXPRESS OR IMPLIED, IS MADE AS TO THE ACCURACY OF THE INFORMATION CONTAINED HEREIN, AND THE SAME IS SUBMITTED SUBJECT TO ERRORS, OMISSIONS, CHANGE OF PRICE, RENTAL OR OTHER CONDITIONS, PRIOR SALE, LEASE OR FINANCING, OR WITHDRAWAL WITHOUT NOTICE, AND OF ANY SPECIAL LISTING CONDITIONS IMPOSED BY OUR PRINCIPALS NO WARRANTIES OR REPRESENTATIONS ARE MADE AS TO THE CONDITION OF THE PROPERTY OR ANY HAZARDS CONTAINED THEREIN ARE ANY TO BE IMPLIED.

771 Corporate Drive, Suite 500  
Lexington, KY 40503  
859 224 2000 tel  
[naiisaac.com](http://naiisaac.com)



## Location Information

Street Address	419 E Main St
City, State, Zip	Mount Sterling, KY 40353
County	Montgomery County

## Building Information

Building Size	+/-2,300 SF
Drive-In Bays	5 (One -14' wide & Four -10' wide) with roll-up garage doors
Bay Depth	30 ft
Ceiling Height	13 ft

## Property Information

Property Type	Garage
Zoning	B-4
Lot Size	+/-1.06 AC / 0.4 AC Usable
APN #	23M-60-27-017.00
Lot Frontage	200 FT
Utilities	Electric & water on-site







Commercial Real Estate Services, Worldwide.

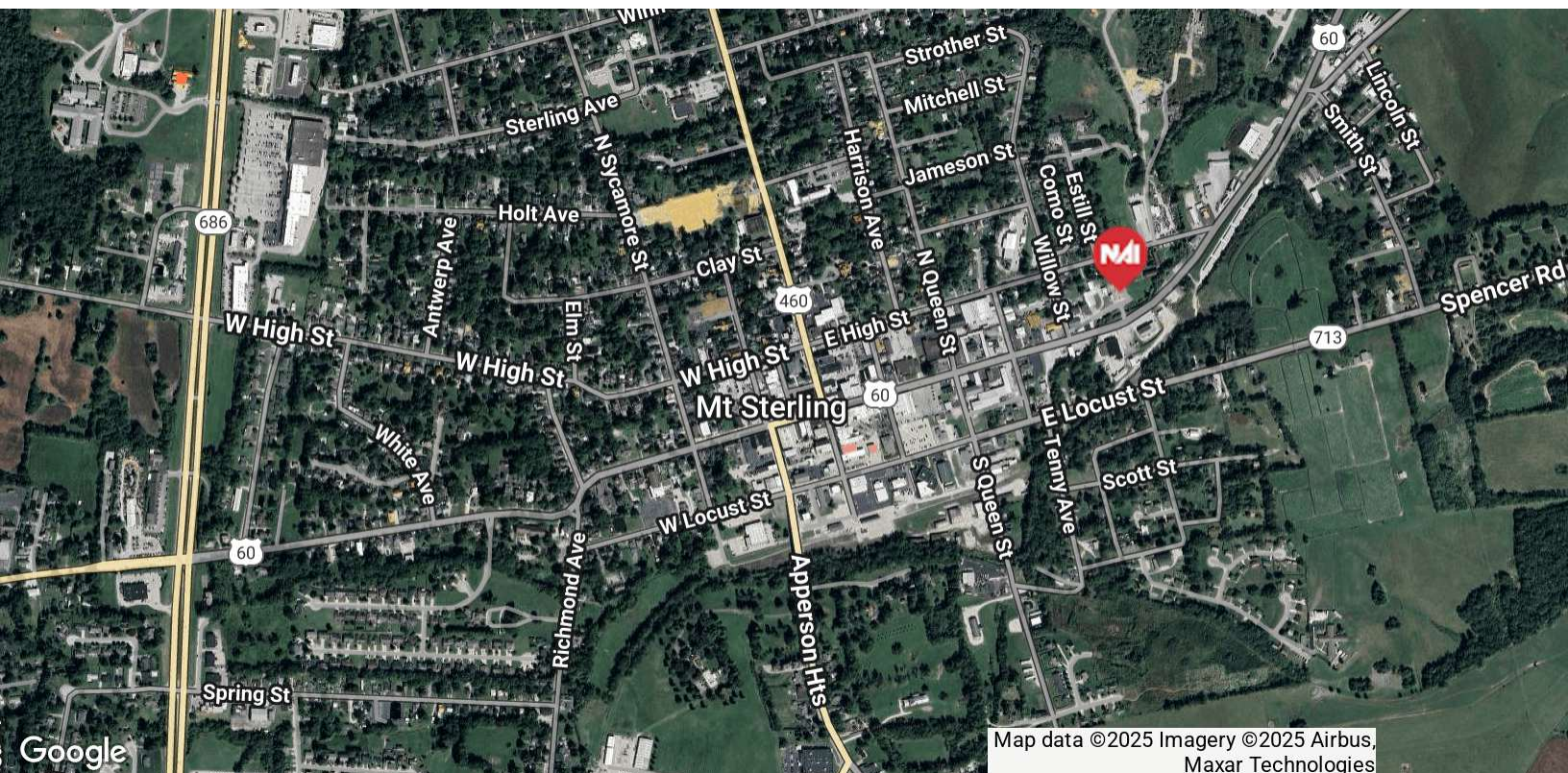
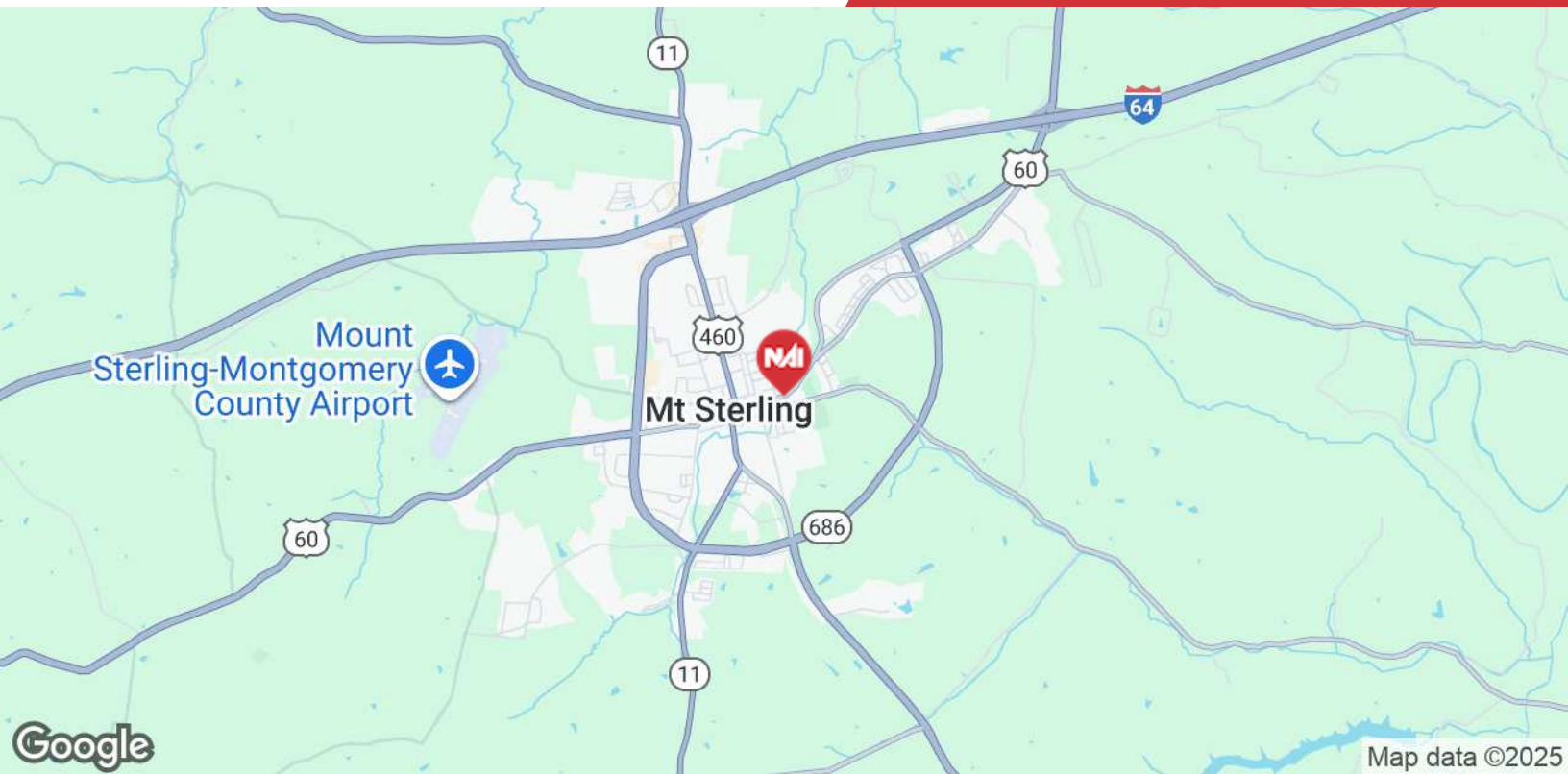
For Sale & Lease  
2,300 SF | \$300,000  
5-Bay Garage on 1.06 AC



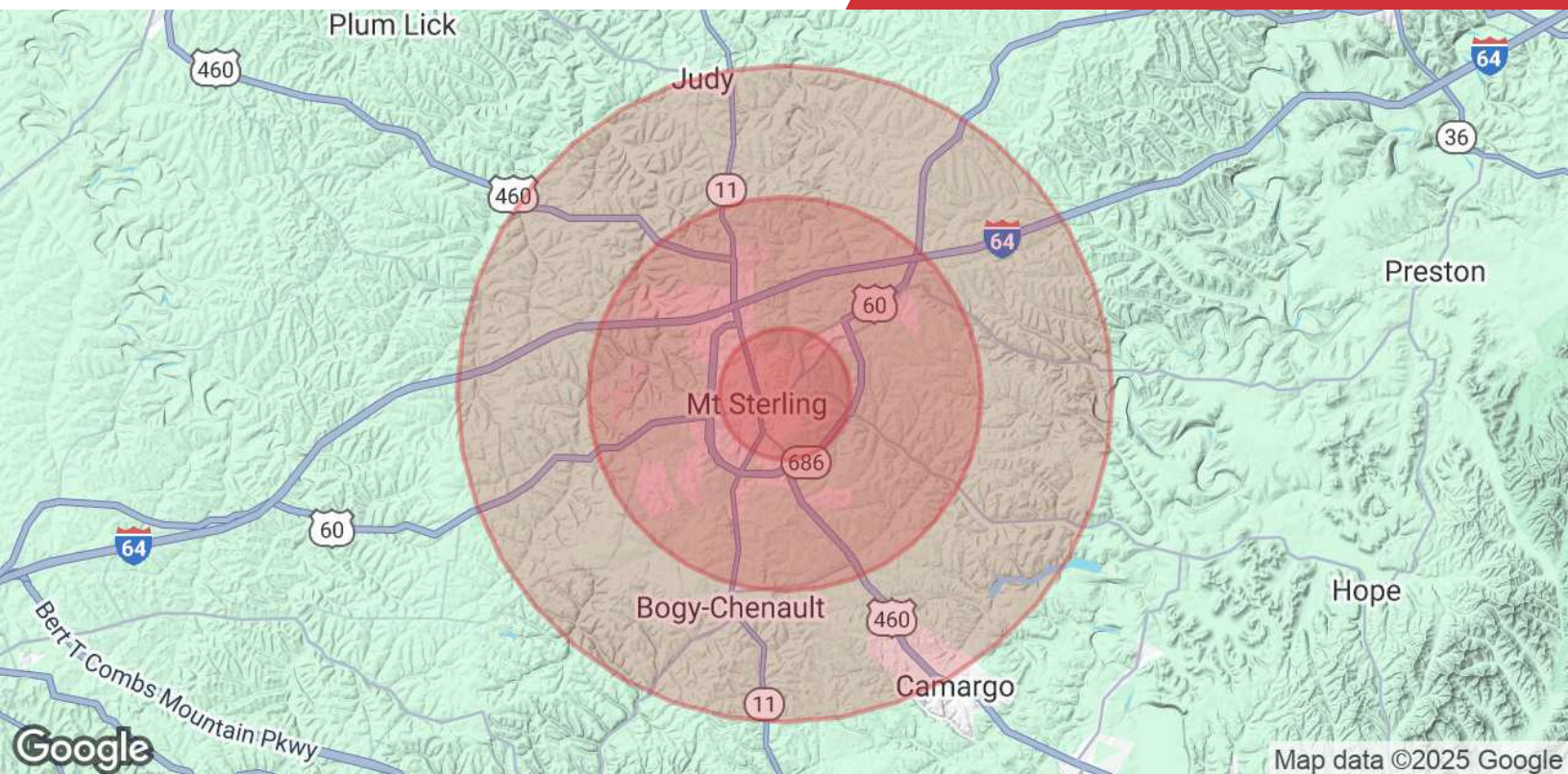
NO WARRANTY OR REPRESENTATION, EXPRESS OR IMPLIED, IS MADE AS TO THE ACCURACY OF THE INFORMATION CONTAINED HEREIN, AND THE SAME IS SUBMITTED SUBJECT TO ERRORS, OMISSIONS, CHANGE OF PRICE, RENTAL OR OTHER CONDITIONS, PRIOR SALE, LEASE OR FINANCING, OR WITHDRAWAL WITHOUT NOTICE, AND OF ANY SPECIAL LISTING CONDITIONS IMPOSED BY OUR PRINCIPALS NO WARRANTIES OR REPRESENTATIONS ARE MADE AS TO THE CONDITION OF THE PROPERTY OR ANY HAZARDS CONTAINED THEREIN ARE ANY TO BE IMPLIED.

771 Corporate Drive, Suite 500  
Lexington, KY 40503  
859 224 2000 tel  
[naiisaac.com](http://naiisaac.com)









## Population

	1 Mile	3 Miles	5 Miles
<b>Total Population</b>	5,434	15,211	19,124
<b>Average Age</b>	40	40	40
<b>Average Age (Male)</b>	38	38	39
<b>Average Age (Female)</b>	42	42	42

## Households & Income

	1 Mile	3 Miles	5 Miles
<b>Total Households</b>	2,239	6,147	7,671
<b># of Persons per HH</b>	2.4	2.5	2.5
<b>Average HH Income</b>	\$59,651	\$67,231	\$69,896
<b>Average House Value</b>	\$176,051	\$200,439	\$204,980

Demographics data derived from STDB 2024