

FOR LEASE



Class A Office Space

Suite 101 - 14,313 SF

Suite 204 - 4,063 SF

Suite 303 - 1,876 SF

3001 EMRICK BOULEVARD

BETHLEHEM, PA



PROPERTY HIGHLIGHTS

OFFERING SUMMARY

Lease Rate	\$17.00 SF Triple Net
Building Size	71,400 SF
Available SF	Suite 101 - 14,313 SF Suite 204 - 4,063 SF Suite 303 - 1,876 SF
Lot Size	6.32 acres
Year Built	2001
Roof	Flat with Rubber Cover
Fire Protection	Fully Sprinklered Building
Structural	Steel and Masonry, Concrete Slab On-Grade Building
Utilities	City Sewer / BTMA Electricity / PP&L
Stories	3
Zoning	LIP - Light Industrial Office Bethlehem Township, PA
Parking Ratio	5.00/1,000 SG
Access/Security	24/7 Access, Normal Business Hours, Card Reader
Power Protection	Back-up Generator shared by Provident Bank and Brown & Brown
HVAC	Gas hot air and Central AC
Elevators	2



Property Overview

Located in the booming Lehigh Valley, 3001 Emrick has the benefit of being surrounded by a plethora of business activity and investment. With a growing population of **665,441**, and a labor force of **344,623** strong, the Lehigh Valley is a thriving metropolis— ranked 65th out of 382 largest metros in the United States. As described by the New York Times, the Lehigh Valley “provides a gateway to the nation’s biggest metropolitan area” due to its close proximity to highways and easy access to much of the eastern seaboard.



Excellent
highway access



Well maintained —
institutionally owned
and occupied



5.0/1,000 SF
above market
parking ratio

3001 Emrick Boulevard | Bethlehem, PA 18020

PROPERTY INTERIOR

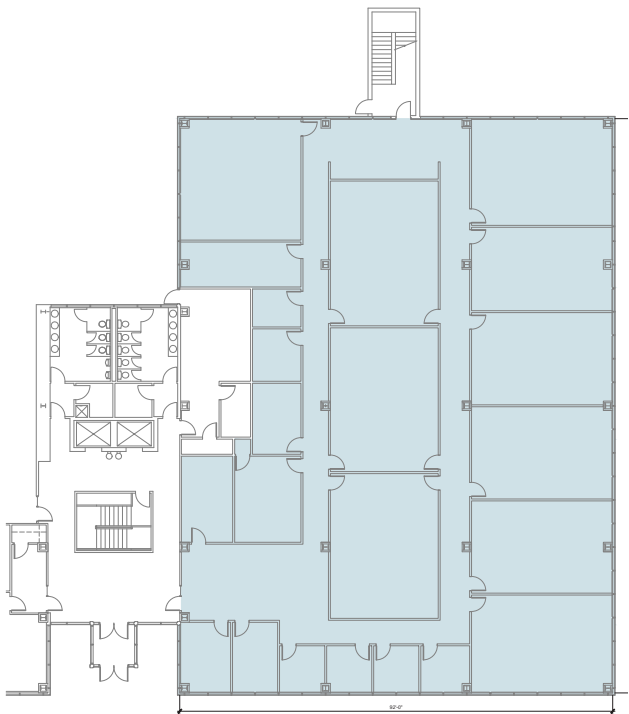


3001 Emrick Boulevard | Bethlehem, PA 18020

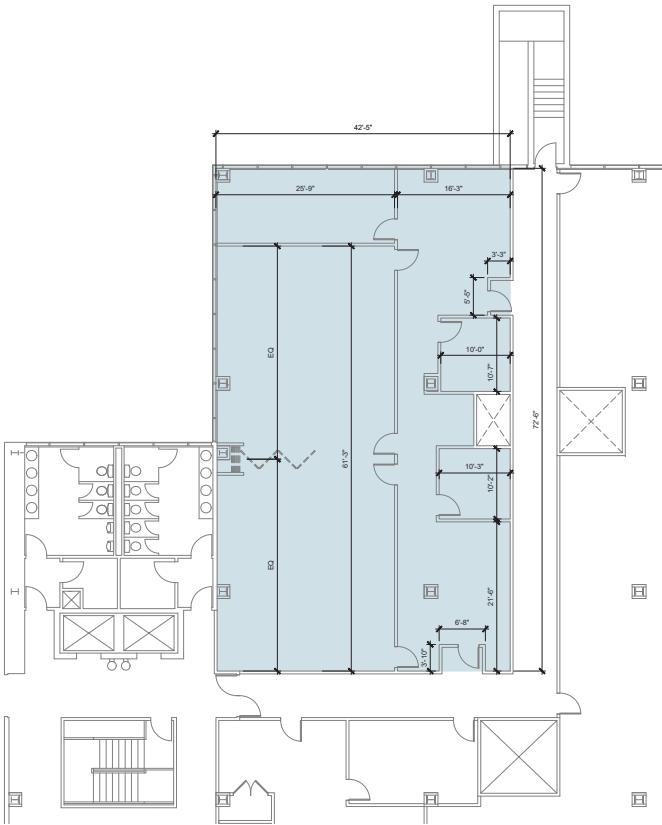
PROPERTY INTERIOR



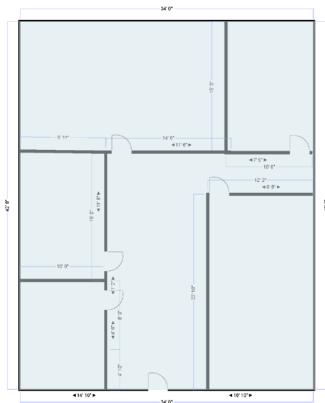
FLOOR PLAN



1st Floor
Suite 101 - 14,313 SF



2nd Floor
Suite 204 - 4,063 SF

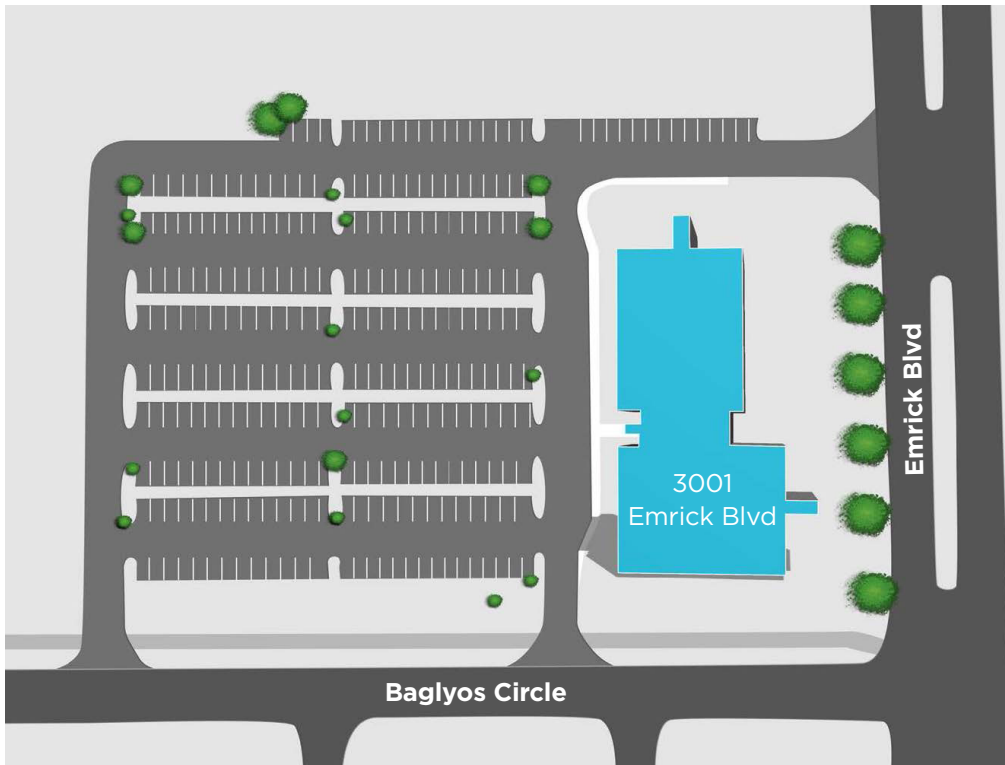


3rd Floor
Suite 303 - 1,876 SF

AREA AMENITIES



SITE PLAN



CONTACT INFORMATION

JASON SOURBEER

Director

+1 717 231 7451

jason.sourbeer@cushwake.com

PAUL GIANNONE

Executive Managing Director

+1 732 452 6184

paul.giannone@cushwake.com

CUSHMAN & WAKEFIELD OF PENNSYLVANIA, LLC

4423 North Front Street

Harrisburg, PA 17110

+1 717 231 7290

cushmanwakefield.com

