



- ±11 Acres
- Utilities available
- ±820' total frontage on US 59
- ±450' total frontage on Halford Rd.
- Pricing: Call broker
- Owner will consider subdivision



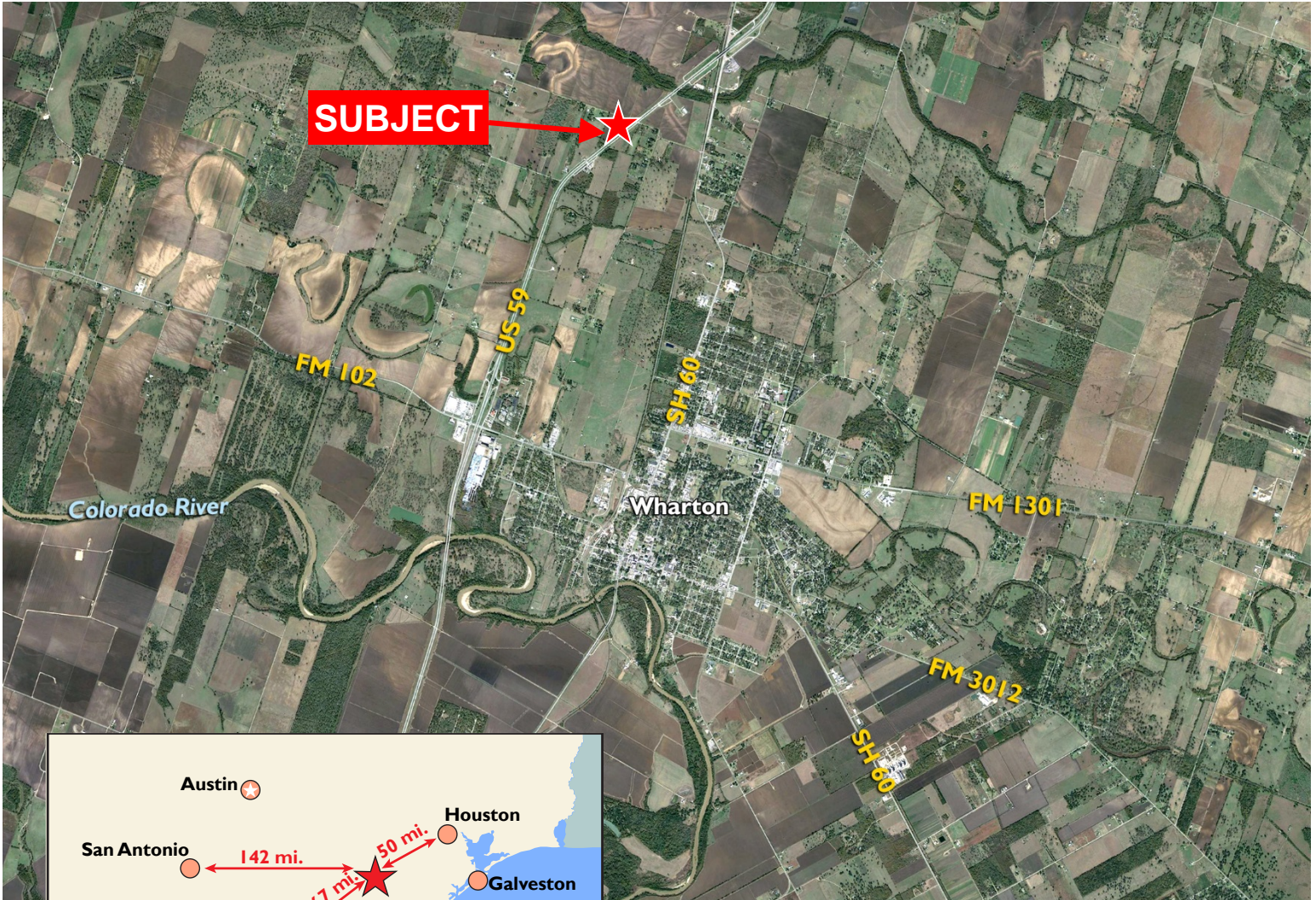
For more information, contact:

John F. Littman, SIOR, MAI
(713) 963 2862
John.Littman@cushwake.com

Tim M. Thomas
(713) 963 2837
Tim.Thomas@cushwake.com

B. Kelley Parker III, SIOR
(713) 963 2896
Kelley.Parker@cushwake.com

Coe Parker
(713) 963 2825
Coe.Parker@cushwake.com



For more information, contact:

John F. Littman, SIOR, MAI
(713) 963 2862
John.Littman@cushwake.com

Tim M. Thomas
(713) 963 2837
Tim.Thomas@cushwake.com

B. Kelley Parker III, SIOR
(713) 963 2896
Kelley.Parker@cushwake.com

Coe Parker
(713) 963 2825
Coe.Parker@cushwake.com