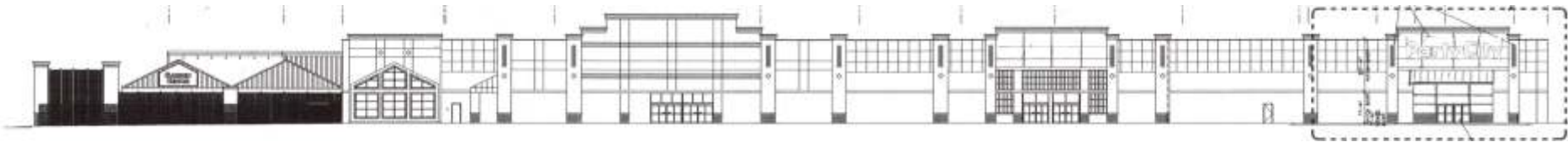


<b>SIGN A</b>	32" Party City
Type:	Front / Reverse-lit Channel Letters
Illumination:	Internally Illuminated LED
Square Footage:	50.85

<b>SIGN B</b>	Party City - Replacement Panels
Type:	3/16" White Polycarbonate Panel w/ first surface applied Vinyl Graphics
Square Footage:	XX.XX



<b>SIGN A</b>	32" Party City
Type:	Front / Reverse-lit Channel Letters
Illumination:	Internally Illuminated LED
Square Footage:	50.85



**Note: Fascia color- 1459 Metro Gray**

**FULL Front Elevation Rendering**



**Front Elevation (North)**

Scale: 1/8" = 1'-0"

**NOTE: DRAWING IS FOR REPRESENTATIONAL PURPOSES ONLY. EXACT DIMENSIONS (FIELD SURVEY) REQUIRED PRIOR TO FABRICATION**

Allowable Square Footage this Elevation:	52.50
Formula: 42" x 1.25 = 52.50 SqFt Allowed	
Actual Square Footage this Elevation:	50.85



This rendering is the property of Southwest Signs, Inc. It is for the exclusive use of Southwest Signs, Inc. and the party for which it was intended, the requestor. It is an unpublished original drawing not to be distributed, reproduced or exhibited without the explicit consent of Southwest Signs, Inc. Please contact your Account Manager for questions regarding this statement.

**Party City**  
2400 Route 34  
Oswego, IL 60543-8520

Project ID#: **130521**  
Project Mgr: Meghan Lowry  
Designer: Kirk Forster  
Created on: 03/25/2022

<b>REVISION</b>	R1 04/18/22 DR - Updated pylon panels, updated banners
	R2 04/20/22 DR - Del. opt 1
	R3 06/10/22 KF - Updated package to show 32" letter set
	R4 06/13/22 KF - Updated Front Elevation w/ new provided rendering