

# FOR LEASE

## Graham Square Stow, Ohio

2,400 - 6,000 sq ft available



**Description:** 911 - 963 Graham Road, just West of Rte 8. The shopping center is 67,055 sf.

**Co-Tenants:** Inline with Save A Lot, Auto Zone, Fifth Third Bank, Taco Bell, Subway, Affordable Uniforms, Pulp Smoothie, etc.

**Nearby Tenants:** SuperWalmart, Lowe's, Planet Fitness, Cleveland Clinic, Dollar Tree, Mattress Firm, Panera, Dunkin Donuts, McDonalds, Starbucks, Jet's Pizza, etc.

### Demographics:

#### Population:

1 mile: 8,362

3 miles: 71,944

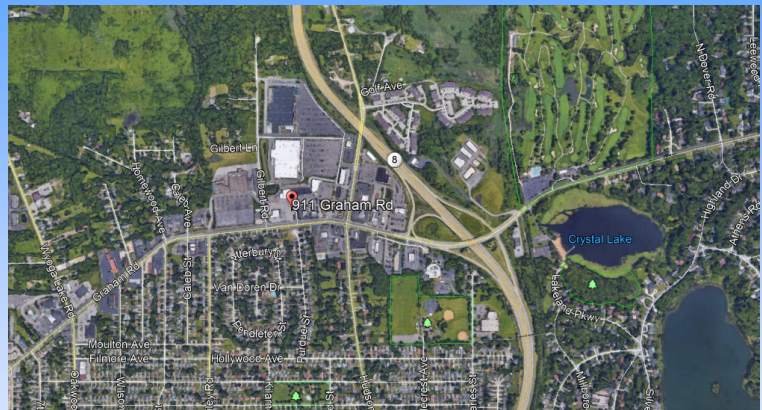
5 miles: 142,407

#### Average Household Income:

1 mile: \$71,522

3 miles: \$70,407

5 miles: \$72,079



For more information contact:

Craig Cohen

[Craig@CohenCommercialGroup.com](mailto:Craig@CohenCommercialGroup.com)



**Cohen Commercial Group**  
6151 Wilson Mills Road, Suite 100  
Highland Hts, Ohio 44143  
(216) 223-5060

The information submitted herein is not guaranteed. Although obtained from reliable sources, it is subject to errors, omissions, prior sale/lease and withdrawal from the market without notice. Cohen Commercial Group, its affiliates, agents, and employees, and Seller/Landlord make no representations about the accuracy of said information and recommend individual investigation to certify its validity.